

Home report

2 Trishas Way, Stratham, Rockingham County, New Hampshire,
United States, 03885



Total Area: 2925 sq. ft
Below Ground: 614 sq. ft, Floor 2: 968 sq. ft, Floor 3: 979 sq. ft, Floor 4: 364 sq. ft
Excluded: Storage 351 sq. ft, Garage 524 sq. ft, Fireplace 12 sq. ft, Walls: 279 sq. ft

Property summary

 **4** Floors

 **4** Bedrooms

 **2** Bathrooms

Home report

2 Trishas Way, Stratham, Rockingham County, New Hampshire,
United States, 03885

 **1**
Half baths

 **1**
Garages

Home report

2 Trishas Way, Stratham, Rockingham County, New Hampshire,
United States, 03885



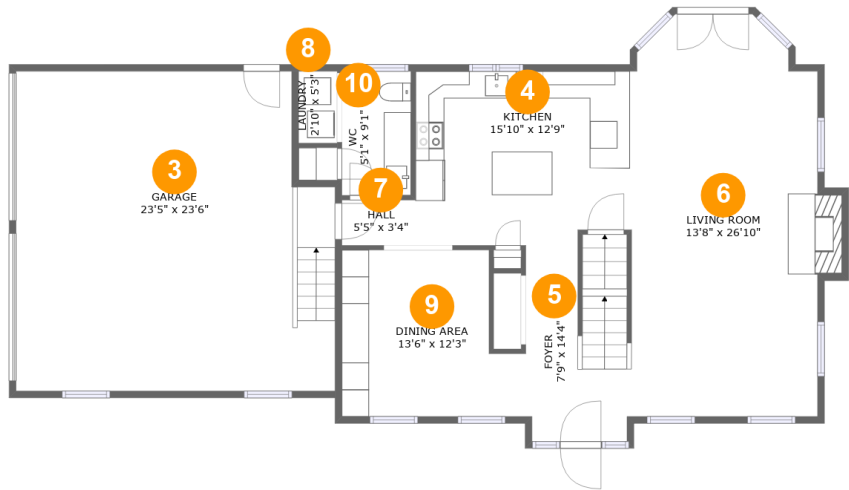
Room dimensions

Floor 1 Below ground Total:614sqft Excluded: 351sqft

#		Max Dimensions	sqft	Included
1	Recreation Room	27'1" x 25'4"	571 sq. ft	Yes
2	Storage	13'8" x 29'7"	351 sq. ft	No

Home report

2 Trishas Way, Stratham, Rockingham County, New Hampshire,
United States, 03885



Room dimensions

Floor 2

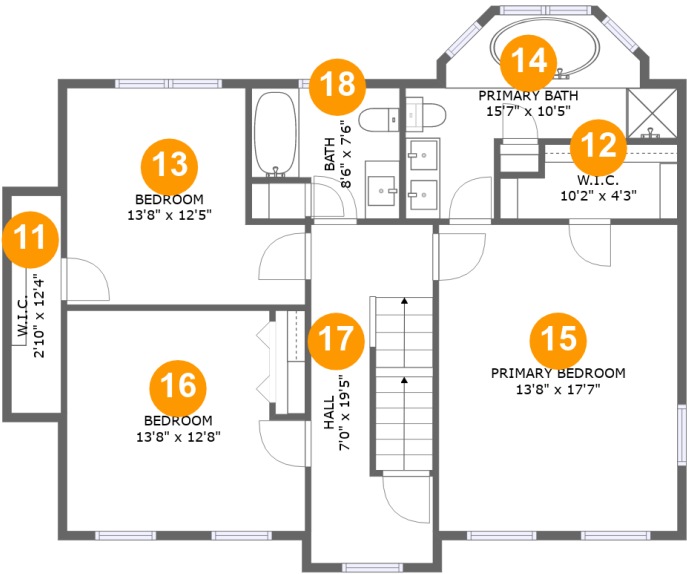
Total:968sqft

Excluded: 536sqft

#		Max Dimensions	sqft	Included
3	Garage	23'5" x 23'6"	524 sq. ft	No
4	Kitchen	15'10" x 12'9"	199 sq. ft	Yes
5	Foyer	7'9" x 14'4"	109 sq. ft	Yes
6	Living Room	13'8" x 26'10"	397 sq. ft	Yes
7	Hall	5'5" x 3'4"	18 sq. ft	Yes
8	Laundry	2'10" x 5'3"	15 sq. ft	Yes
9	Dining Area	13'6" x 12'3"	145 sq. ft	Yes
10	WC	5'1" x 9'1"	46 sq. ft	Yes

Home report

2 Trishas Way, Stratham, Rockingham County, New Hampshire,
United States, 03885



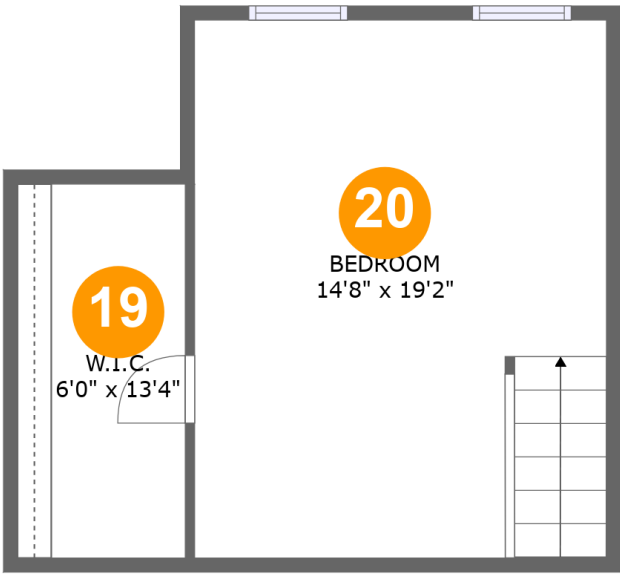
Room dimensions

Floor 3 Total:979sqft Excluded: 0sqft

#		Max Dimensions	sqft	Included
11	W.I.C.	2'10" x 12'4"	35 sq. ft	Yes
12	W.I.C.	10'2" x 4'3"	38 sq. ft	Yes
13	Bedroom	13'8" x 12'5"	143 sq. ft	Yes
14	Primary Bath	15'7" x 10'5"	108 sq. ft	Yes
15	Primary Bedroom	13'8" x 17'7"	240 sq. ft	Yes
16	Bedroom	13'8" x 12'8"	160 sq. ft	Yes
17	Hall	7'0" x 19'5"	132 sq. ft	Yes
18	Bath	8'6" x 7'6"	55 sq. ft	Yes

Home report

2 Trishas Way, Stratham, Rockingham County, New Hampshire,
United States, 03885

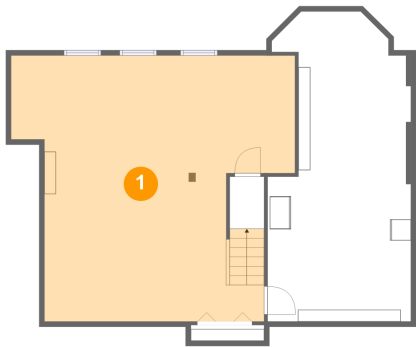


Room dimensions

Floor 4 Total:364sqft Excluded: 0sqft

#		Max Dimensions	sqft	Included
19	W.I.C.	6'0" x 13'4"	79 sq. ft	Yes
20	Bedroom	14'8" x 19'2"	281 sq. ft	Yes

1 Floor 1 - Recreation Room



Max Dimensions: 27'1" x 25'4"
Calculated Area: 571 sq. ft
Included: Yes

Heated: Yes
Finished: Yes
Enclosed: Yes
Contiguous: Yes
Permitted: Yes
Wet space: No
Addition: No
Conversion: No

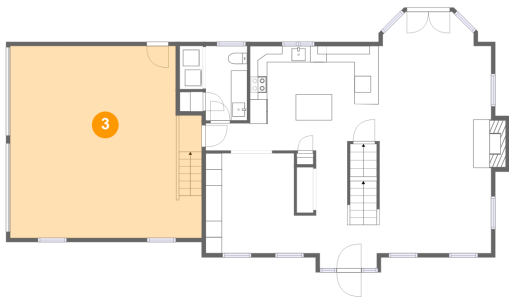
2 Floor 1 - Storage



Max Dimensions: 13'8" x 29'7"
Calculated Area: 351 sq. ft
Included: No

Heated: No
Finished: No
Enclosed: No
Contiguous: Yes
Permitted: Yes
Wet space: No
Addition: No
Conversion: No

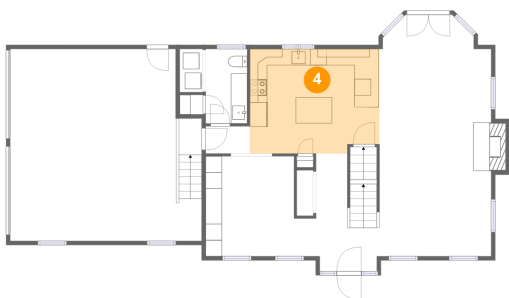
3 Floor 2 - Garage



Max Dimensions: 23'5" x 23'6"
Calculated Area: 524 sq. ft
Included: No

Heated: No
Finished: No
Enclosed: Yes
Contiguous: Yes
Permitted: Yes
Wet space: No
Addition: No
Conversion: No

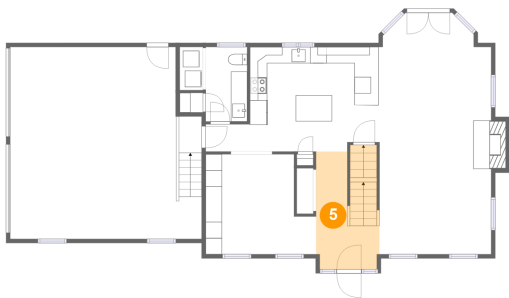
4 Floor 2 - Kitchen



Max Dimensions: 15'10" x 12'9"
Calculated Area: 199 sq. ft
Included: Yes

Heated: Yes
Finished: Yes
Enclosed: Yes
Contiguous: Yes
Permitted: Yes
Wet space: No
Addition: No
Conversion: No

5 Floor 2 - Foyer

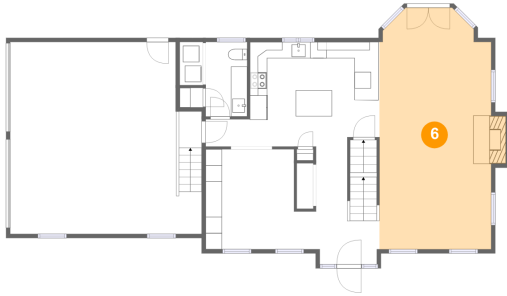


Max Dimensions: 7'9" x 14'4"
Calculated Area: 109 sq. ft
Included: Yes

Heated: Yes
Finished: Yes
Enclosed: Yes
Contiguous: Yes
Permitted: Yes
Wet space: No
Addition: No
Conversion: No

2 Trishas Way, Stratham, Rockingham County, New Hampshire,
United States, 03885

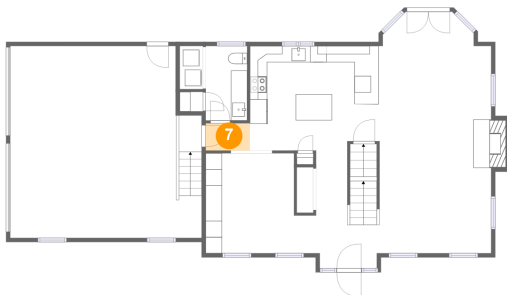
6 Floor 2 - Living Room



Max Dimensions: 13'8" x 26'10"
Calculated Area: 397 sq. ft
Included: Yes

Heated: Yes
Finished: Yes
Enclosed: Yes
Contiguous: Yes
Permitted: Yes
Wet space: No
Addition: No
Conversion: No

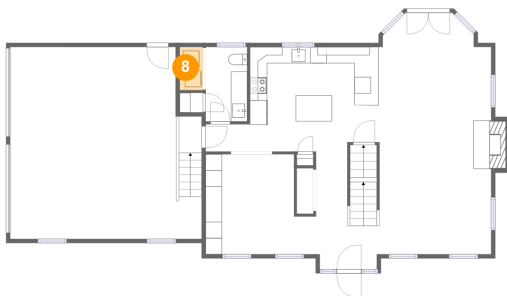
7 Floor 2 - Hall



Max Dimensions: 5'5" x 3'4"
Calculated Area: 18 sq. ft
Included: Yes

Heated: Yes
Finished: Yes
Enclosed: Yes
Contiguous: Yes
Permitted: Yes
Wet space: No
Addition: No
Conversion: No

8 Floor 2 - Laundry

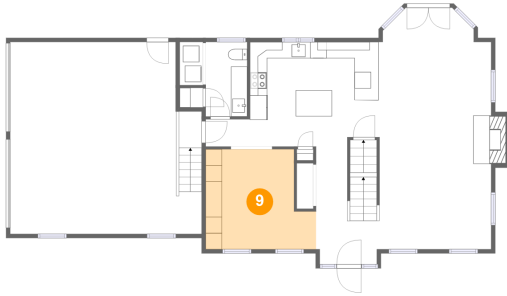


Max Dimensions: 2'10" x 5'3"
Calculated Area: 15 sq. ft
Included: Yes

Heated: Yes
Finished: Yes
Enclosed: Yes
Contiguous: Yes
Permitted: Yes
Wet space: No
Addition: No
Conversion: No

2 Trishas Way, Stratham, Rockingham County, New Hampshire,
United States, 03885

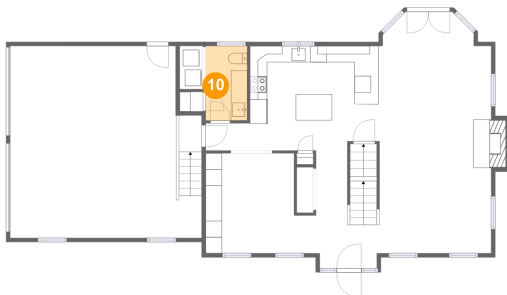
9 Floor 2 - Dining Area



Max Dimensions: 13'6" x 12'3"
Calculated Area: 145 sq. ft
Included: Yes

Heated: Yes
Finished: Yes
Enclosed: Yes
Contiguous: Yes
Permitted: Yes
Wet space: No
Addition: No
Conversion: No

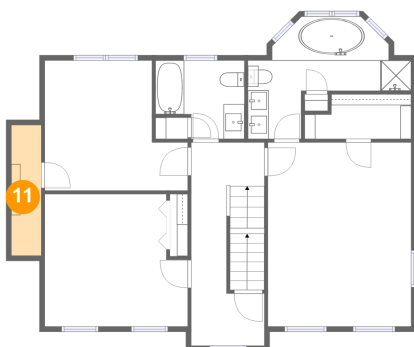
10 Floor 2 - WC



Max Dimensions: 5'1" x 9'1"
Calculated Area: 46 sq. ft
Included: Yes

Heated: Yes
Finished: Yes
Enclosed: Yes
Contiguous: Yes
Permitted: Yes
Wet space: Yes
Addition: No
Conversion: No

11 Floor 3 - W.I.C.

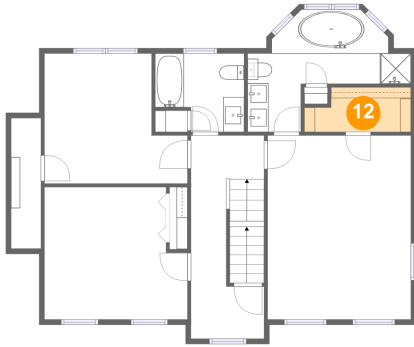


Max Dimensions: 2'10" x 12'4"
Calculated Area: 35 sq. ft
Included: Yes

Heated: Yes
Finished: Yes
Enclosed: Yes
Contiguous: Yes
Permitted: Yes
Wet space: No
Addition: No
Conversion: No

2 Trishas Way, Stratham, Rockingham County, New Hampshire,
United States, 03885

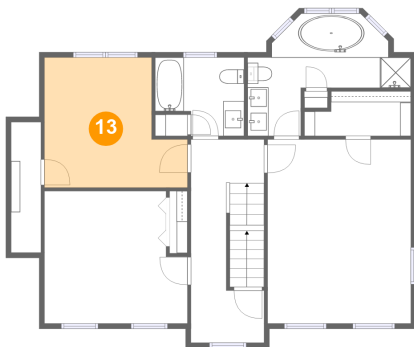
12 Floor 3 - W.I.C.



Max Dimensions: 10'2" x 4'3"
Calculated Area: 38 sq. ft
Included: Yes

Heated: Yes
Finished: Yes
Enclosed: Yes
Contiguous: Yes
Permitted: Yes
Wet space: No
Addition: No
Conversion: No

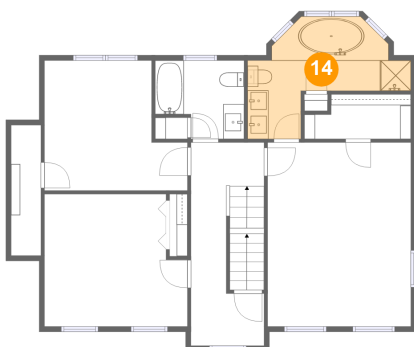
13 Floor 3 - Bedroom



Max Dimensions: 13'8" x 12'5"
Calculated Area: 143 sq. ft
Included: Yes

Heated: Yes
Finished: Yes
Enclosed: Yes
Contiguous: Yes
Permitted: Yes
Wet space: No
Addition: No
Conversion: No

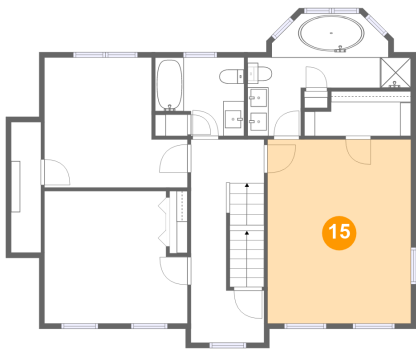
14 Floor 3 - Primary Bath



Max Dimensions: 15'7" x 10'5"
Calculated Area: 108 sq. ft
Included: Yes

Heated: Yes
Finished: Yes
Enclosed: Yes
Contiguous: Yes
Permitted: Yes
Wet space: Yes
Addition: No
Conversion: No

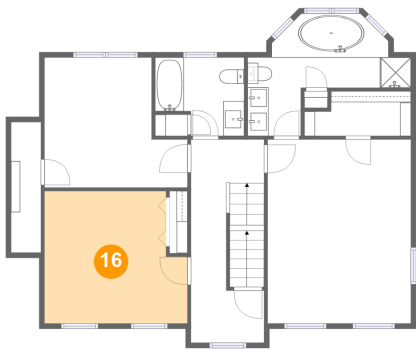
15 Floor 3 - Primary Bedroom



Max Dimensions: 13'8" x 17'7"
Calculated Area: 240 sq. ft
Included: Yes

Heated: Yes
Finished: Yes
Enclosed: Yes
Contiguous: Yes
Permitted: Yes
Wet space: No
Addition: No
Conversion: No

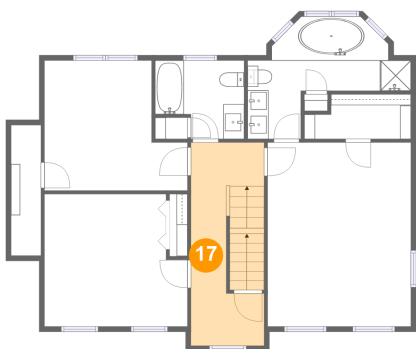
16 Floor 3 - Bedroom



Max Dimensions: 13'8" x 12'8"
Calculated Area: 160 sq. ft
Included: Yes

Heated: Yes
Finished: Yes
Enclosed: Yes
Contiguous: Yes
Permitted: Yes
Wet space: No
Addition: No
Conversion: No

17 Floor 3 - Hall

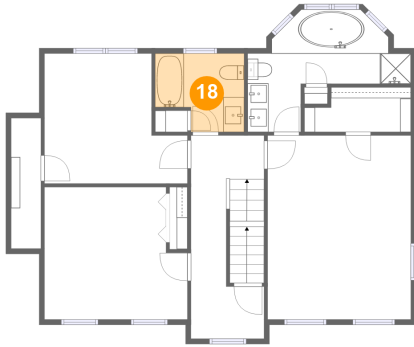


Max Dimensions: 7'0" x 19'5"
Calculated Area: 132 sq. ft
Included: Yes

Heated: Yes
Finished: Yes
Enclosed: Yes
Contiguous: Yes
Permitted: Yes
Wet space: No
Addition: No
Conversion: No

2 Trishas Way, Stratham, Rockingham County, New Hampshire,
United States, 03885

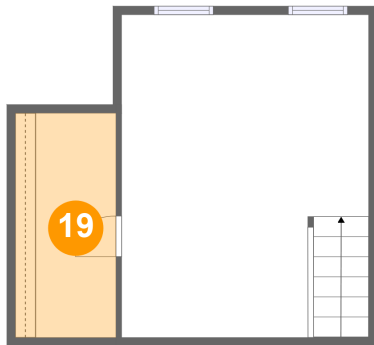
18 Floor 3 - Bath



Max Dimensions: 8'6" x 7'6"
Calculated Area: 55 sq. ft
Included: Yes

Heated: Yes
Finished: Yes
Enclosed: Yes
Contiguous: Yes
Permitted: Yes
Wet space: Yes
Addition: No
Conversion: No

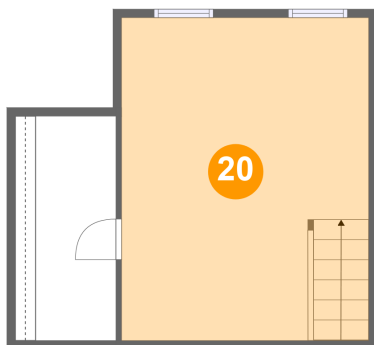
19 Floor 4 - W.I.C.



Max Dimensions: 6'0" x
13'4"
Calculated Area: 79 sq. ft
Included: Yes

Heated: Yes
Finished: Yes
Enclosed: Yes
Contiguous:
Yes
Permitted: Yes
Wet space: No
Addition: No
Conversion: No

20 Floor 4 - Bedroom



Max Dimensions: 14'8" x
19'2"
Calculated Area: 281 sq. ft
Included: Yes

Heated: Yes
Finished: Yes
Enclosed: Yes
Contiguous:
Yes
Permitted: Yes
Wet space: No
Addition: No
Conversion: No