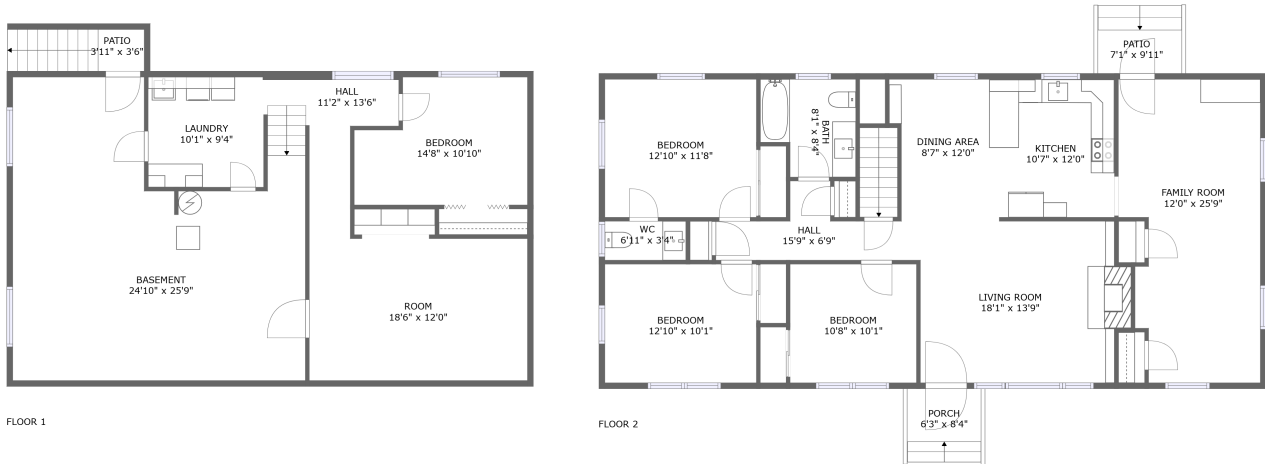



Home report

2747 Brogan Circle, Lee-Mitchell, Salem, Roanoke County, Virginia, United States, 24153



Property summary


 **0** Garages

 **4** Bedrooms

 **1** Bathrooms

 **1** Half baths

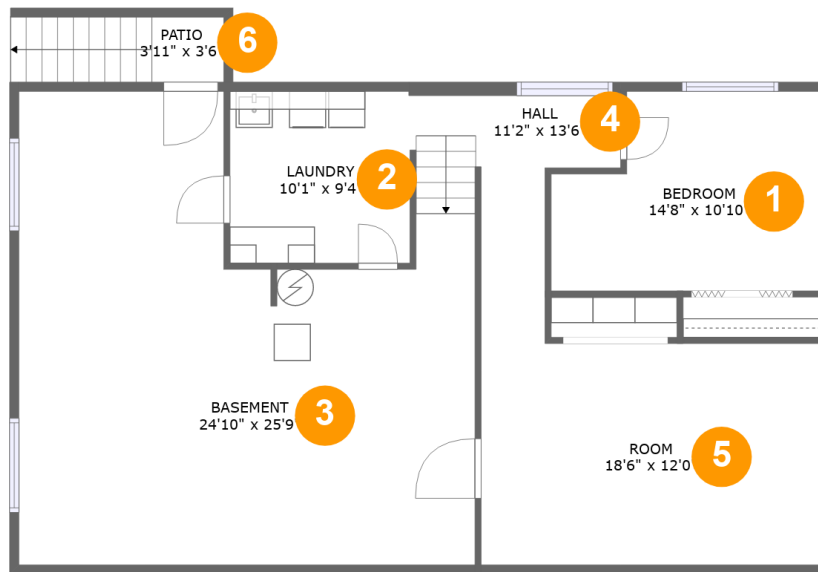
 **2** Floors

 **2,163** Gross living area sqft

 **2,872** Total sqft

Home report

2747 Brogan Circle, Lee-Mitchell, Salem, Roanoke County, Virginia, United States, 24153



Room dimensions

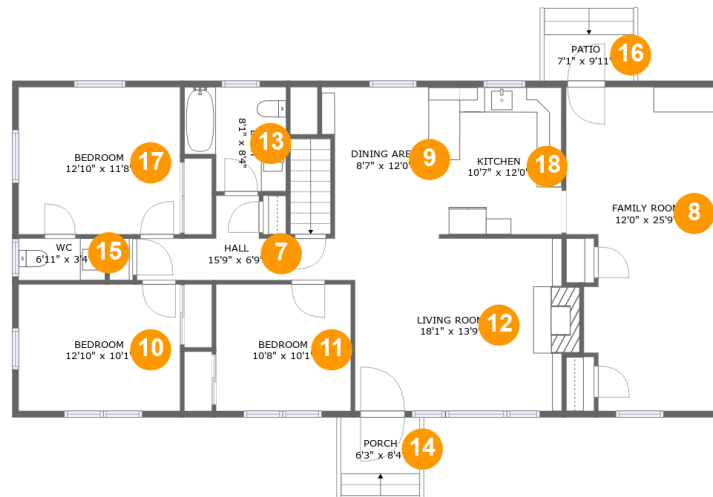
Floor 1

Total sqft: 1238 Living area: 649

#		Dimensions	sqft	Counted as living area
1	Bedroom	14'8" x 10'10"	141 sq. ft	Yes
2	Laundry	10'1" x 9'4"	93 sq. ft	Yes
3	Basement	24'10" x 25'9"	516 sq. ft	No
4	Hall	11'2" x 13'6"	85 sq. ft	Yes
5	Room	18'6" x 12'0"	223 sq. ft	Yes
6	Patio	3'11" x 3'6"	41 sq. ft	No

Home report

2747 Brogan Circle, Lee-Mitchell, Salem, Roanoke County, Virginia, United States, 24153



Room dimensions

Floor 2

Total sqft: 1634 Living area: 1514

#		Dimensions	sqft	Counted as living area
7	Hall	15'9" x 6'9"	64 sq. ft	Yes
8	Family Room	12'0" x 25'9"	280 sq. ft	Yes
9	Dining Area	8'7" x 12'0"	94 sq. ft	Yes
10	Bedroom	12'10" x 10'1"	129 sq. ft	Yes
11	Bedroom	10'8" x 10'1"	108 sq. ft	Yes
12	Living Room	18'1" x 13'9"	239 sq. ft	Yes
13	Bath	8'1" x 8'4"	60 sq. ft	Yes
14	Porch	6'3" x 8'4"	52 sq. ft	No
15	WC	6'11" x 3'4"	23 sq. ft	Yes
16	Patio	7'1" x 9'11"	68 sq. ft	No
17	Bedroom	12'10" x 11'8"	150 sq. ft	Yes

Home report

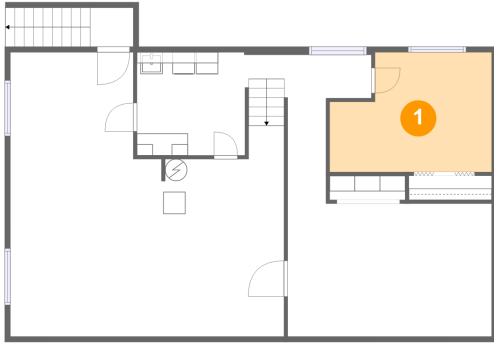
**2747 Brogan Circle, Lee-Mitchell, Salem, Roanoke County,
Virginia, United States, 24153**

#		Dimensions	sqft	Counted as living area
18	Kitchen	10'7" x 12'0"	124 sq. ft	Yes

Home report

2747 Brogan Circle, Lee-Mitchell, Salem, Roanoke County,
Virginia, United States, 24153

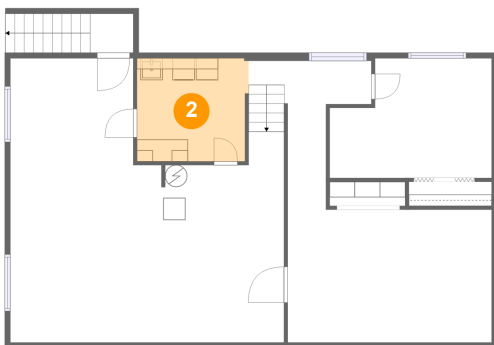
1 Floor 1 - Bedroom



Dimensions: 14'8" x 10'10"
Area: 141 sq. ft
Counted as living area: Yes

Heated: Yes
Finished: Yes
Enclosed: Yes
Contiguous: Yes
Permitted: Yes
Wet space: No
Addition: No
Conversion: No

2 Floor 1 - Laundry

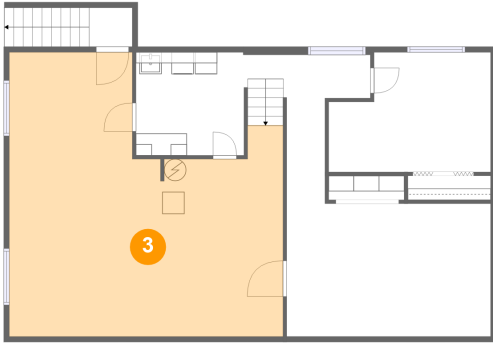


Dimensions: 10'1" x 9'4"
Area: 93 sq. ft
Counted as living area: Yes

Heated: Yes
Finished: Yes
Enclosed: Yes
Contiguous: Yes
Permitted: Yes
Wet space: No
Addition: No
Conversion: No

2747 Brogan Circle, Lee-Mitchell, Salem, Roanoke County, Virginia, United States, 24153

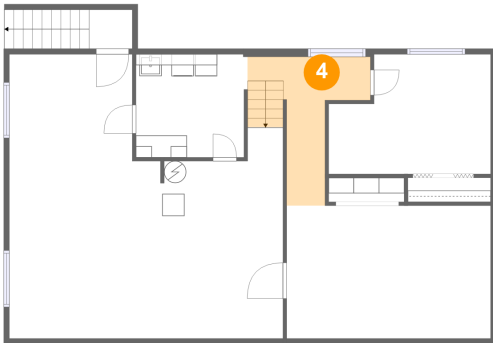
3 Floor 1 - Basement



Dimensions: 24'10" x 25'9"
Area: 516 sq. ft
Counted as living area: No

Heated: Yes
Finished: No
Enclosed: Yes
Contiguous: Yes
Permitted: Yes
Wet space: No
Addition: No
Conversion: No

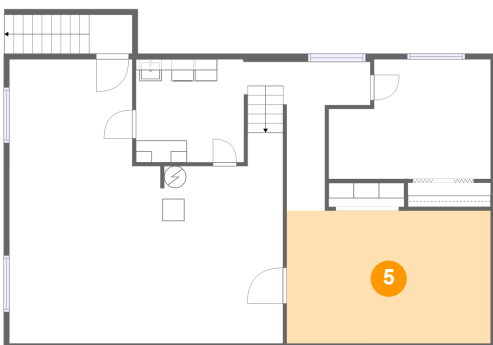
4 Floor 1 - Hall



Dimensions: 11'2" x 13'6"
Area: 85 sq. ft
Counted as living area: Yes

Heated: Yes
Finished: Yes
Enclosed: Yes
Contiguous: Yes
Permitted: Yes
Wet space: No
Addition: No
Conversion: No

5 Floor 1 - Room

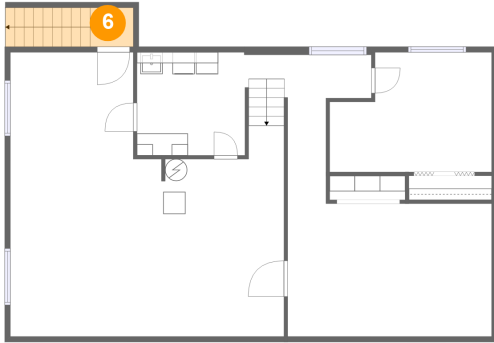


Dimensions: 18'6" x 12'0"
Area: 223 sq. ft
Counted as living area: Yes

Heated: Yes
Finished: Yes
Enclosed: Yes
Contiguous: Yes
Permitted: Yes
Wet space: No
Addition: No
Conversion: No

2747 Brogan Circle, Lee-Mitchell, Salem, Roanoke County, Virginia, United States, 24153

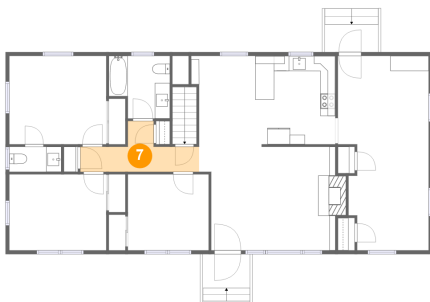
6 Floor 1 - Patio



Dimensions: 3'11" x 3'6"
Area: 41 sq. ft
Counted as living area: No

Heated: No
Finished: Yes
Enclosed: No
Contiguous: Yes
Permitted: Yes
Wet space: No
Addition: No
Conversion: No

7 Floor 2 - Hall



Dimensions: 15'9" x 6'9"
Area: 64 sq. ft
Counted as living area: Yes

Heated: Yes
Finished: Yes
Enclosed: Yes
Contiguous: Yes
Permitted: Yes
Wet space: No
Addition: No
Conversion: No

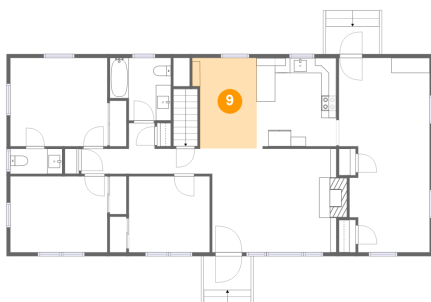
8 Floor 2 - Family Room



Dimensions: 12'0" x 25'9"
Area: 280 sq. ft
Counted as living area: Yes

Heated: Yes
Finished: Yes
Enclosed: Yes
Contiguous: Yes
Permitted: Yes
Wet space: No
Addition: No
Conversion: No

9 Floor 2 - Dining Area



Dimensions: 8'7" x 12'0"
Area: 94 sq. ft
Counted as living area: Yes

Heated: Yes
Finished: Yes
Enclosed: Yes
Contiguous: Yes
Permitted: Yes
Wet space: No
Addition: No
Conversion: No

10 Floor 2 - Bedroom



Dimensions: 12'10" x 10'1"
Area: 129 sq. ft
Counted as living area: Yes

Heated: Yes
Finished: Yes
Enclosed: Yes
Contiguous: Yes
Permitted: Yes
Wet space: No
Addition: No
Conversion: No

11 Floor 2 - Bedroom



Dimensions: 10'8" x 10'1"
Area: 108 sq. ft
Counted as living area: Yes

Heated: Yes
Finished: Yes
Enclosed: Yes
Contiguous: Yes
Permitted: Yes
Wet space: No
Addition: No
Conversion: No

2747 Brogan Circle, Lee-Mitchell, Salem, Roanoke County, Virginia, United States, 24153

12 Floor 2 - Living Room



Dimensions: 18'1" x 13'9"
Area: 239 sq. ft
Counted as living area: Yes

Heated: Yes
Finished: Yes
Enclosed: Yes
Contiguous: Yes
Permitted: Yes
Wet space: No
Addition: No
Conversion: No

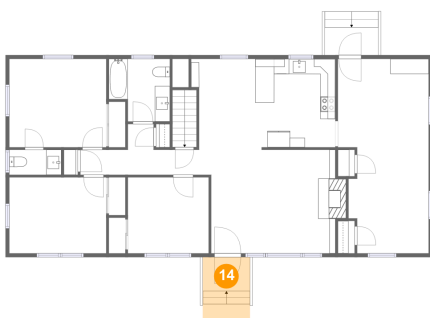
13 Floor 2 - Bath



Dimensions: 8'1" x 8'4"
Area: 60 sq. ft
Counted as living area: Yes

Heated: Yes
Finished: Yes
Enclosed: Yes
Contiguous: Yes
Permitted: Yes
Wet space: Yes
Addition: No
Conversion: No

14 Floor 2 - Porch



Dimensions: 6'3" x 8'4"
Area: 52 sq. ft
Counted as living area: No

Heated: No
Finished: Yes
Enclosed: No
Contiguous: Yes
Permitted: Yes
Wet space: No
Addition: No
Conversion: No

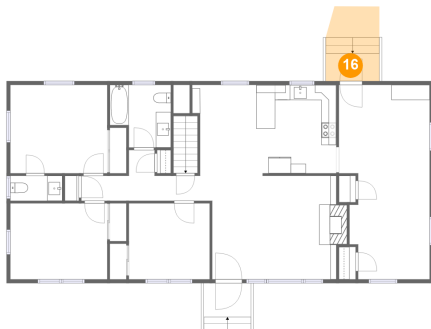
15 Floor 2 - WC



Dimensions: 6'11" x 3'4"
Area: 23 sq. ft
Counted as living area: Yes

Heated: Yes
Finished: Yes
Enclosed: Yes
Contiguous: Yes
Permitted: Yes
Wet space: Yes
Addition: No
Conversion: No

16 Floor 2 - Patio



Dimensions: 7'1" x 9'11"
Area: 68 sq. ft
Counted as living area: No

Heated: No
Finished: Yes
Enclosed: No
Contiguous: Yes
Permitted: Yes
Wet space: No
Addition: No
Conversion: No

17 Floor 2 - Bedroom



Dimensions: 12'10" x 11'8"
Area: 150 sq. ft
Counted as living area: Yes

Heated: Yes
Finished: Yes
Enclosed: Yes
Contiguous: Yes
Permitted: Yes
Wet space: No
Addition: No
Conversion: No

Home report

2747 Brogan Circle, Lee-Mitchell, Salem, Roanoke County,
Virginia, United States, 24153

18 Floor 2 - Kitchen



Dimensions: 10'7" x 12'0"
Area: 124 sq. ft
Counted as living area: Yes

Heated: Yes
Finished: Yes
Enclosed: Yes
Contiguous: Yes
Permitted: Yes
Wet space: No
Addition: No
Conversion: No