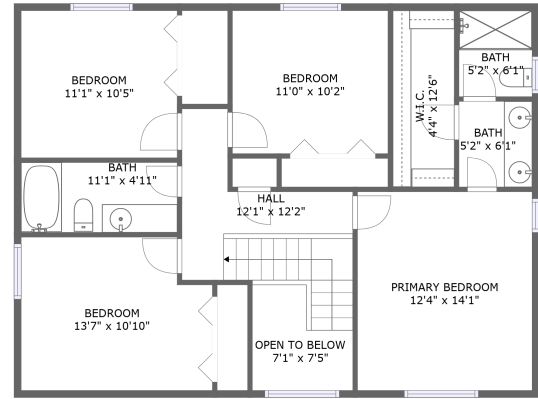
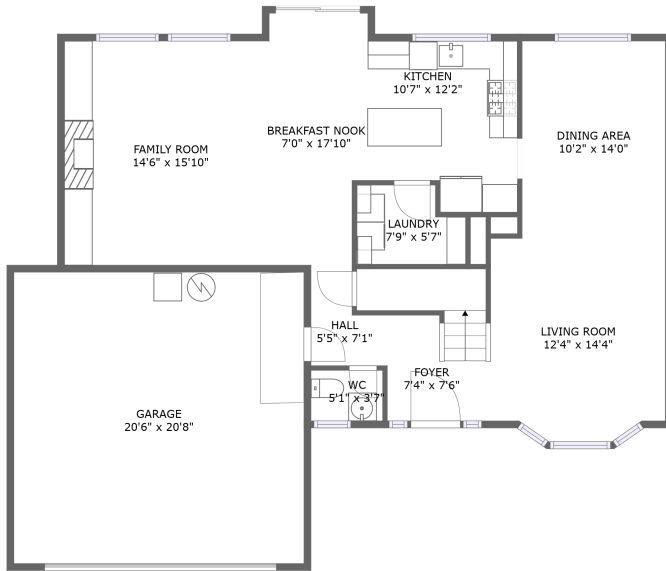




# 800 Roxe Drive, Forest Grove, Washington County, Oregon, United States, 97116



## Property summary

 **1** Garages

 **4** Bedrooms

 **2** Bathrooms

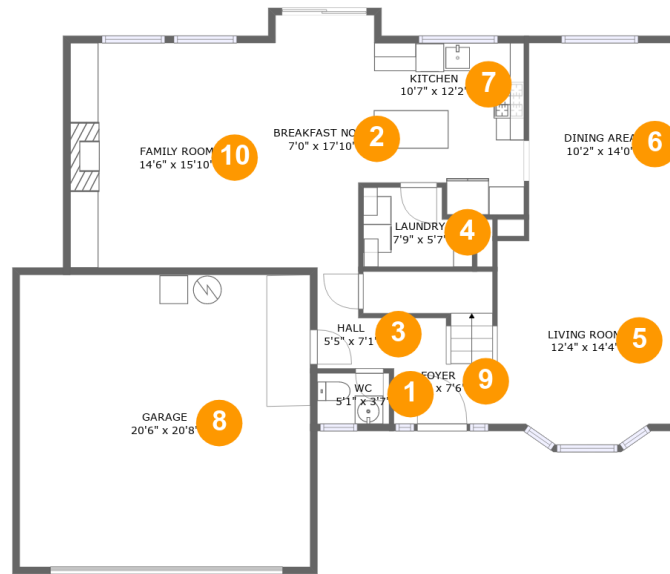
 **1** Half baths

 **2** Floors

 **2,039** Gross living area sqft

 **2,536** Total sqft

# 800 Roxe Drive, Forest Grove, Washington County, Oregon, United States, 97116



## Room dimensions

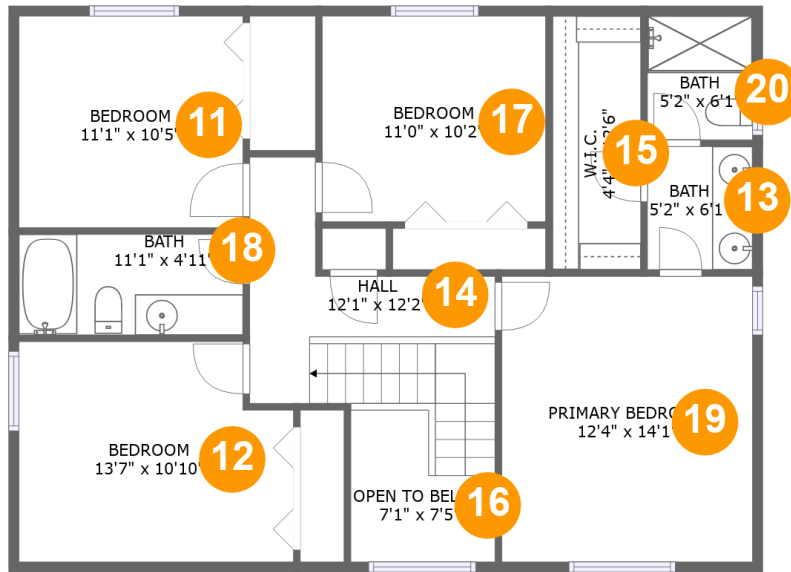
Floor 1

Total sqft: 1499

Living area: 1048

#		Dimensions	sqft	Counted as living area
1	WC	5'1" x 3'7"	18 sq. ft	Yes
2	Breakfast Nook	7'0" x 17'10"	118 sq. ft	Yes
3	Hall	5'5" x 7'1"	30 sq. ft	Yes
4	Laundry	7'9" x 5'7"	38 sq. ft	Yes
5	Living Room	12'4" x 14'4"	170 sq. ft	Yes
6	Dining Area	10'2" x 14'0"	142 sq. ft	Yes
7	Kitchen	10'7" x 12'2"	117 sq. ft	Yes
8	Garage	20'6" x 20'8"	424 sq. ft	No
9	Foyer	7'4" x 7'6"	82 sq. ft	Yes
10	Family Room	14'6" x 15'10"	230 sq. ft	Yes

800 Roxe Drive, Forest Grove, Washington County, Oregon, United States, 97116



Room dimensions

Floor 2

Total sqft: 1037

Living area: 991

#		Dimensions	sqft	Counted as living area
11	Bedroom	11'1" x 10'5"	115 sq. ft	Yes
12	Bedroom	13'7" x 10'10"	139 sq. ft	Yes
13	Bath	5'2" x 6'1"	31 sq. ft	Yes
14	Hall	12'1" x 12'2"	108 sq. ft	Yes
15	W.I.C.	4'4" x 12'6"	54 sq. ft	Yes
16	Open To Below	7'1" x 7'5"	43 sq. ft	No
17	Bedroom	11'0" x 10'2"	112 sq. ft	Yes
18	Bath	11'1" x 4'11"	55 sq. ft	Yes
19	Primary Bedroom	12'4" x 14'1"	174 sq. ft	Yes
20	Bath	5'2" x 6'1"	32 sq. ft	Yes

# 800 Roxe Drive, Forest Grove, Washington County, Oregon, United States, 97116

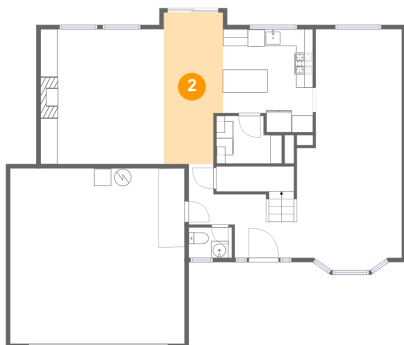
## 1 Floor 1 - WC



Dimensions: 5'1" x 3'7"  
Area: 18 sq. ft  
Counted as living area: Yes

Heated: Yes  
Finished: Yes  
Enclosed: Yes  
Contiguous: Yes  
Permitted: Yes  
Wet space: No  
Addition: No  
Conversion: No

## 2 Floor 1 - Breakfast Nook



Dimensions: 7'0" x 17'10"  
Area: 118 sq. ft  
Counted as living area: Yes

Heated: Yes  
Finished: Yes  
Enclosed: Yes  
Contiguous: Yes  
Permitted: Yes  
Wet space: No  
Addition: No  
Conversion: No

# 800 Roxe Drive, Forest Grove, Washington County, Oregon, United States, 97116

## 3 Floor 1 - Hall



Dimensions: 5'5" x 7'1"  
Area: 30 sq. ft  
Counted as living area: Yes

Heated: Yes  
Finished: Yes  
Enclosed: Yes  
Contiguous: Yes  
Permitted: Yes  
Wet space: No  
Addition: No  
Conversion: No

## 4 Floor 1 - Laundry



Dimensions: 7'9" x 5'7"  
Area: 38 sq. ft  
Counted as living area: Yes

Heated: Yes  
Finished: Yes  
Enclosed: Yes  
Contiguous: Yes  
Permitted: Yes  
Wet space: No  
Addition: No  
Conversion: No

## 5 Floor 1 - Living Room

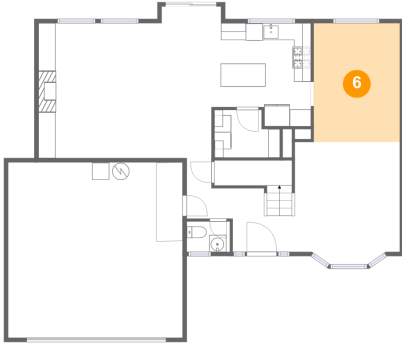


Dimensions: 12'4" x 14'4"  
Area: 170 sq. ft  
Counted as living area: Yes

Heated: Yes  
Finished: Yes  
Enclosed: Yes  
Contiguous: Yes  
Permitted: Yes  
Wet space: No  
Addition: No  
Conversion: No

# 800 Roxe Drive, Forest Grove, Washington County, Oregon, United States, 97116

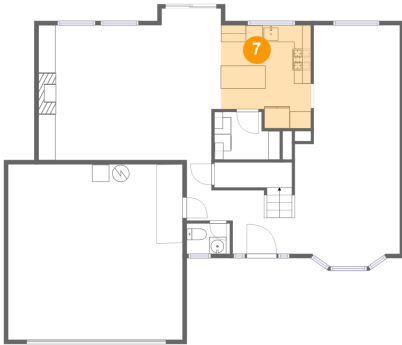
## 6 Floor 1 - Dining Area



Dimensions: 10'2" x 14'0"  
Area: 142 sq. ft  
Counted as living area: Yes

Heated: Yes  
Finished: Yes  
Enclosed: Yes  
Contiguous: Yes  
Permitted: Yes  
Wet space: No  
Addition: No  
Conversion: No

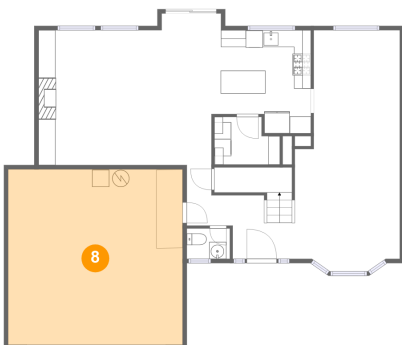
## 7 Floor 1 - Kitchen



Dimensions: 10'7" x 12'2"  
Area: 117 sq. ft  
Counted as living area: Yes

Heated: Yes  
Finished: Yes  
Enclosed: Yes  
Contiguous: Yes  
Permitted: Yes  
Wet space: No  
Addition: No  
Conversion: No

## 8 Floor 1 - Garage

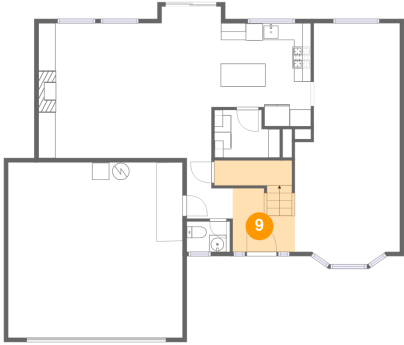


Dimensions: 20'6" x 20'8"  
Area: 424 sq. ft  
Counted as living area: No

Heated: No  
Finished: No  
Enclosed: Yes  
Contiguous: Yes  
Permitted: Yes  
Wet space: No  
Addition: No  
Conversion: No

**800 Roxe Drive, Forest Grove, Washington County,  
Oregon, United States, 97116**

**9 Floor 1 - Foyer**



Dimensions: 7'4" x 7'6"  
Area: 82 sq. ft  
Counted as living area: Yes

Heated: Yes  
Finished: Yes  
Enclosed: Yes  
Contiguous: Yes  
Permitted: Yes  
Wet space: No  
Addition: No  
Conversion: No

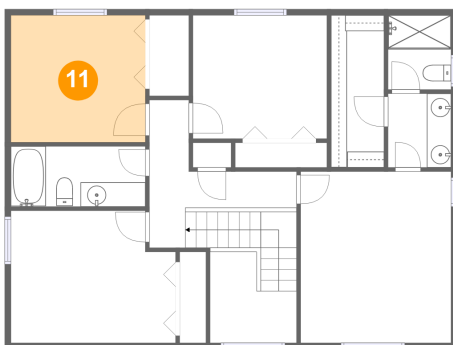
**10 Floor 1 - Family Room**



Dimensions: 14'6" x 15'10"  
Area: 230 sq. ft  
Counted as living area: Yes

Heated: Yes  
Finished: Yes  
Enclosed: Yes  
Contiguous: Yes  
Permitted: Yes  
Wet space: No  
Addition: No  
Conversion: No

**11 Floor 2 - Bedroom**

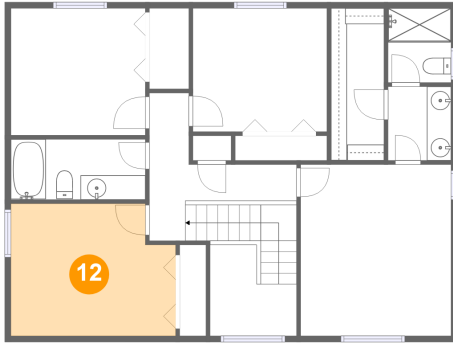


Dimensions: 11'1" x 10'5"  
Area: 115 sq. ft  
Counted as living area: Yes

Heated: Yes  
Finished: Yes  
Enclosed: Yes  
Contiguous: Yes  
Permitted: Yes  
Wet space: No  
Addition: No  
Conversion: No

# 800 Roxe Drive, Forest Grove, Washington County, Oregon, United States, 97116

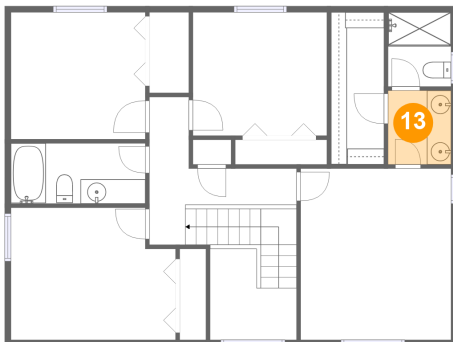
## 12 Floor 2 - Bedroom



Dimensions: 13'7" x 10'10"  
Area: 139 sq. ft  
Counted as living area: Yes

Heated: Yes  
Finished: Yes  
Enclosed: Yes  
Contiguous: Yes  
Permitted: Yes  
Wet space: No  
Addition: No  
Conversion: No

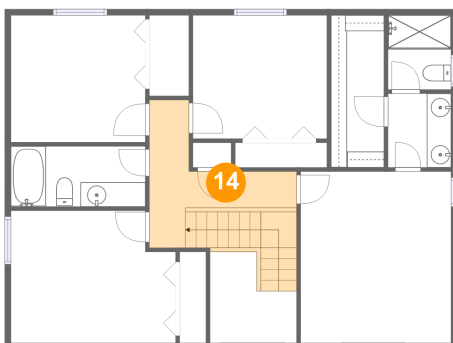
## 13 Floor 2 - Bath



Dimensions: 5'2" x 6'1"  
Area: 31 sq. ft  
Counted as living area: Yes

Heated: Yes  
Finished: Yes  
Enclosed: Yes  
Contiguous: Yes  
Permitted: Yes  
Wet space: Yes  
Addition: No  
Conversion: No

## 14 Floor 2 - Hall



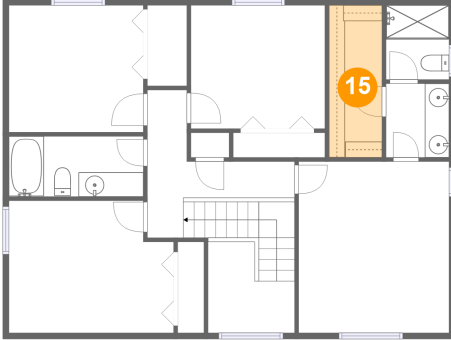
Dimensions: 12'1" x 12'2"  
Area: 108 sq. ft  
Counted as living area: Yes

Heated: Yes  
Finished: Yes  
Enclosed: Yes  
Contiguous: Yes  
Permitted: Yes  
Wet space: No  
Addition: No  
Conversion: No



**800 Roxe Drive, Forest Grove, Washington County,  
Oregon, United States, 97116**

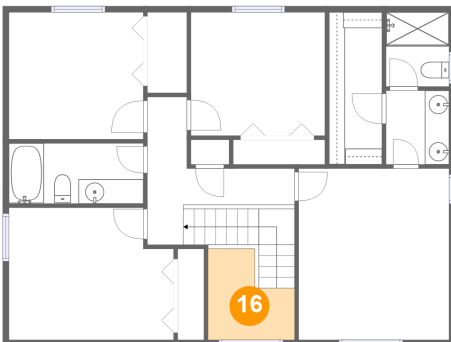
**15 Floor 2 - W.I.C.**



Dimensions: 4'4" x 12'6"  
Area: 54 sq. ft  
Counted as living area: Yes

Heated: Yes  
Finished: Yes  
Enclosed: Yes  
Contiguous: Yes  
Permitted: Yes  
Wet space: No  
Addition: No  
Conversion: No

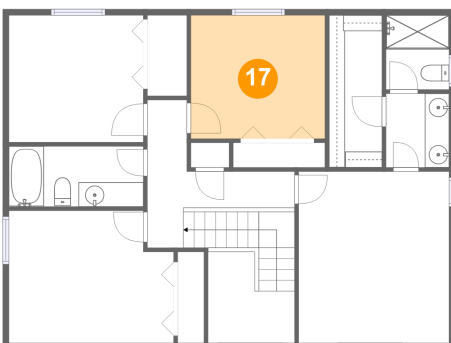
**16 Floor 2 - Open To Below**



Dimensions: 7'1" x 7'5"  
Area: 43 sq. ft  
Counted as living area: No

Heated: No  
Finished: No  
Enclosed: No  
Contiguous: Yes  
Permitted: No  
Wet space: No  
Addition: No  
Conversion: No

**17 Floor 2 - Bedroom**

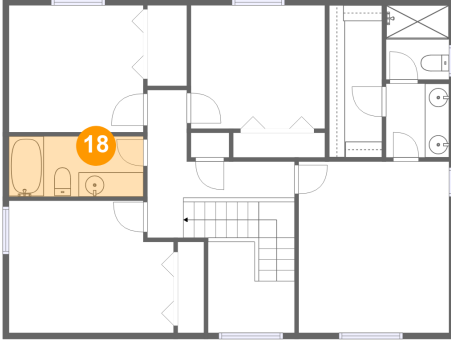


Dimensions: 11'0" x 10'2"  
Area: 112 sq. ft  
Counted as living area: Yes

Heated: Yes  
Finished: Yes  
Enclosed: Yes  
Contiguous: Yes  
Permitted: Yes  
Wet space: No  
Addition: No  
Conversion: No

**800 Roxe Drive, Forest Grove, Washington County,  
Oregon, United States, 97116**

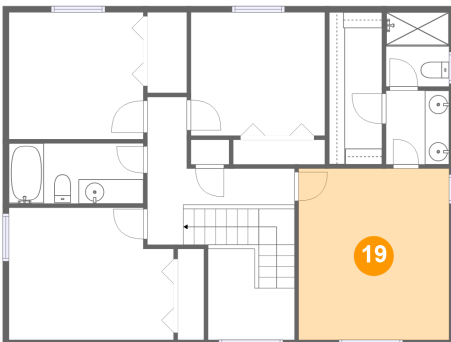
**18 Floor 2 - Bath**



Dimensions: 11'1" x 4'11"  
Area: 55 sq. ft  
Counted as living area: Yes

Heated: Yes  
Finished: Yes  
Enclosed: Yes  
Contiguous: Yes  
Permitted: Yes  
Wet space: Yes  
Addition: No  
Conversion: No

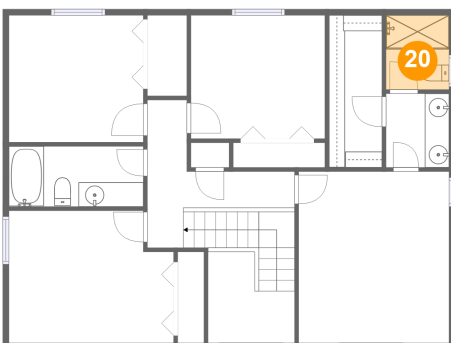
**19 Floor 2 - Primary Bedroom**



Dimensions: 12'4" x 14'1"  
Area: 174 sq. ft  
Counted as living area: Yes

Heated: Yes  
Finished: Yes  
Enclosed: Yes  
Contiguous: Yes  
Permitted: Yes  
Wet space: No  
Addition: No  
Conversion: No

**20 Floor 2 - Bath**



Dimensions: 5'2" x 6'1"  
Area: 32 sq. ft  
Counted as living area: Yes

Heated: Yes  
Finished: Yes  
Enclosed: Yes  
Contiguous: Yes  
Permitted: Yes  
Wet space: Yes  
Addition: No  
Conversion: No