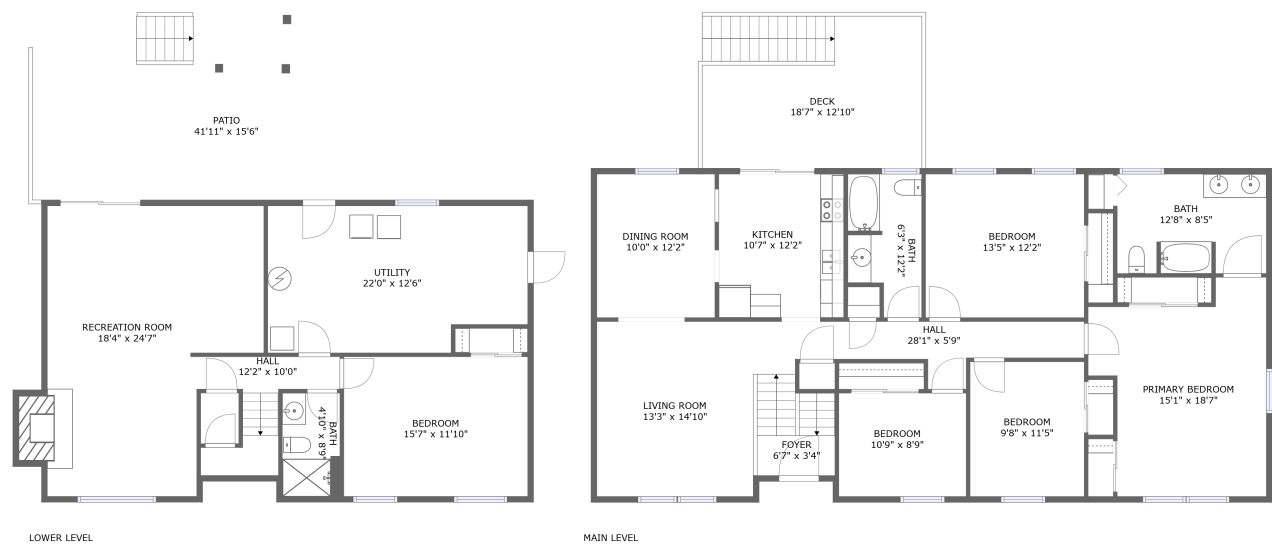


Home report

6432 Sugar Ridge Drive, Sugar Loaf Hills, Cave Spring, Roanoke,
Roanoke County, Virginia, United States, 24018



Total Area: 2269 sq. ft
Floor 1: 733 sq. ft, Floor 2: 1536 sq. ft
Excluded: Utility 259 sq. ft, Patio 448 sq. ft, Fireplace 16 sq. ft, Deck 236 sq. ft, Walls: 153 sq. ft

Property summary

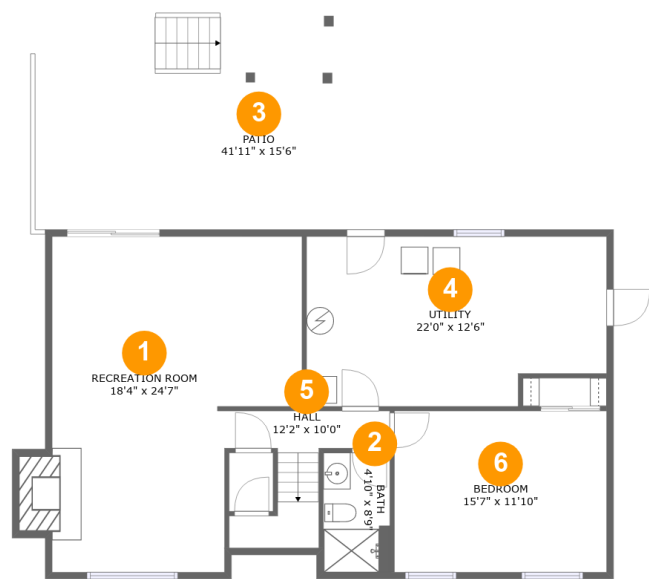
 **2** Floors

 **5** Bedrooms

 **3** Bathrooms

Home report

6432 Sugar Ridge Drive, Sugar Loaf Hills, Cave Spring, Roanoke,
Roanoke County, Virginia, United States, 24018



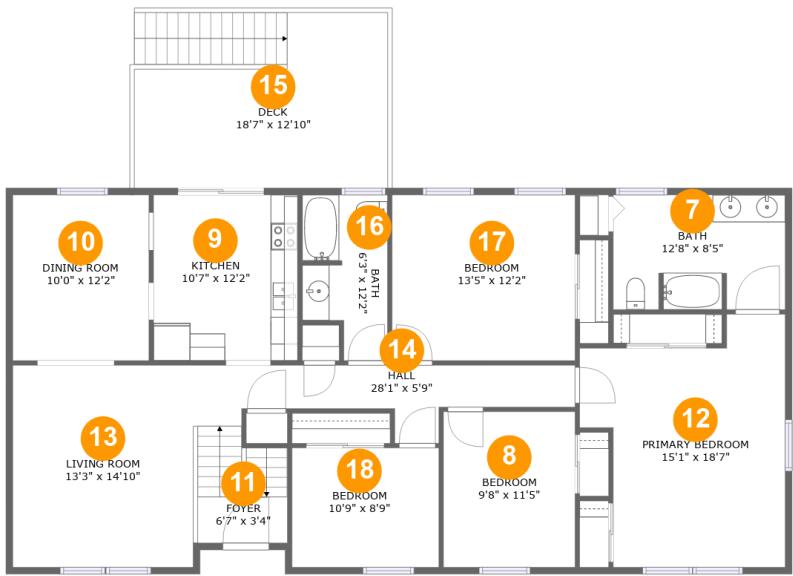
Room dimensions

Floor 1 Total:733sqft Excluded: 723sqft

#		Max Dimensions	sqft	Included
1	Recreation Room	18'4" x 24'7"	396 sq. ft	Yes
2	Bath	4'10" x 8'9"	43 sq. ft	Yes
3	Patio	41'11" x 15'6"	449 sq. ft	No
4	Utility	22'0" x 12'6"	259 sq. ft	No
5	Hall	12'2" x 10'0"	64 sq. ft	Yes
6	Bedroom	15'7" x 11'10"	184 sq. ft	Yes

Home report

6432 Sugar Ridge Drive, Sugar Loaf Hills, Cave Spring, Roanoke,
Roanoke County, Virginia, United States, 24018



Room dimensions

Floor 2 Total:1536sqft Excluded: 236sqft

#		Max Dimensions	sqft	Included
7	Bath	12'8" x 8'5"	105 sq. ft	Yes
8	Bedroom	9'8" x 11'5"	110 sq. ft	Yes
9	Kitchen	10'7" x 12'2"	130 sq. ft	Yes
10	Dining Room	10'0" x 12'2"	121 sq. ft	Yes
11	Foyer	6'7" x 3'4"	23 sq. ft	Yes
12	Primary Bedroom	15'1" x 18'7"	228 sq. ft	Yes
13	Living Room	13'3" x 14'10"	196 sq. ft	Yes
14	Hall	28'1" x 5'9"	132 sq. ft	Yes
15	Deck	18'7" x 12'10"	236 sq. ft	No
16	Bath	6'3" x 12'2"	66 sq. ft	Yes
17	Bedroom	13'5" x 12'2"	163 sq. ft	Yes

Home report

6432 Sugar Ridge Drive, Sugar Loaf Hills, Cave Spring, Roanoke,
Roanoke County, Virginia, United States, 24018

#		Max Dimensions	sqft	Included
18	Bedroom	10'9" x 8'9"	94 sq. ft	Yes

1 Floor 1 - Recreation Room



Max Dimensions: 18'4" x 24'7"
Calculated Area: 396 sq. ft
Included: Yes

Heated: Yes
Finished: Yes
Enclosed: Yes
Contiguous: Yes
Permitted: Yes
Wet space: No
Addition: No
Conversion: No

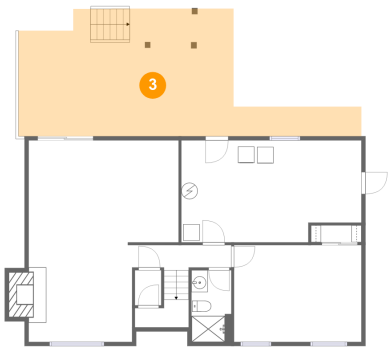
2 Floor 1 - Bath



Max Dimensions: 4'10" x 8'9"
Calculated Area: 43 sq. ft
Included: Yes

Heated: Yes
Finished: Yes
Enclosed: Yes
Contiguous: Yes
Permitted: Yes
Wet space: Yes
Addition: No
Conversion: No

3 Floor 1 - Patio



Max Dimensions: 41'11" x 15'6"
Calculated Area: 449 sq. ft
Included: No

Heated: No
Finished: Yes
Enclosed: No
Contiguous: Yes
Permitted: Yes
Wet space: No
Addition: No
Conversion: No

4 Floor 1 - Utility



Max Dimensions: 22'0" x 12'6"
Calculated Area: 259 sq. ft
Included: No

Heated: Yes
Finished: No
Enclosed: Yes
Contiguous: Yes
Permitted: Yes
Wet space: No
Addition: No
Conversion: No

5 Floor 1 - Hall



Max Dimensions: 12'2" x 10'0"
Calculated Area: 64 sq. ft
Included: Yes

Heated: Yes
Finished: Yes
Enclosed: Yes
Contiguous: Yes
Permitted: Yes
Wet space: No
Addition: No
Conversion: No

6 Floor 1 - Bedroom



Max Dimensions: 15'7" x 11'10"
Calculated Area: 184 sq. ft
Included: Yes

Heated: Yes
Finished: Yes
Enclosed: Yes
Contiguous: Yes
Permitted: Yes
Wet space: No
Addition: No
Conversion: No

7 Floor 2 - Bath



Max Dimensions: 12'8" x 8'5"
Calculated Area: 105 sq. ft
Included: Yes

Heated: Yes
Finished: Yes
Enclosed: Yes
Contiguous: Yes
Permitted: Yes
Wet space: Yes
Addition: No
Conversion: No

8 Floor 2 - Bedroom

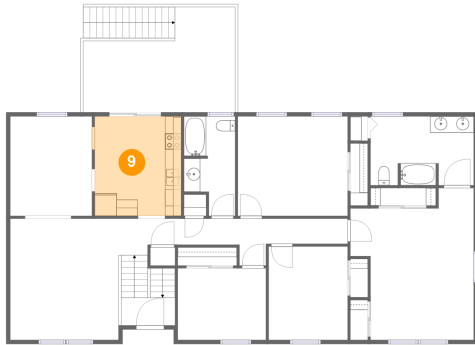


Max Dimensions: 9'8" x 11'5"
Calculated Area: 110 sq. ft
Included: Yes

Heated: Yes
Finished: Yes
Enclosed: Yes
Contiguous: Yes
Permitted: Yes
Wet space: No
Addition: No
Conversion: No

6432 Sugar Ridge Drive, Sugar Loaf Hills, Cave Spring, Roanoke,
Roanoke County, Virginia, United States, 24018

9 Floor 2 - Kitchen



Max Dimensions: 10'7" x 12'2"
Calculated Area: 130 sq. ft
Included: Yes

Heated: Yes
Finished: Yes
Enclosed: Yes
Contiguous: Yes
Permitted: Yes
Wet space: No
Addition: No
Conversion: No

10 Floor 2 - Dining Room



Max Dimensions: 10'0" x 12'2"
Calculated Area: 121 sq. ft
Included: Yes

Heated: Yes
Finished: Yes
Enclosed: Yes
Contiguous: Yes
Permitted: Yes
Wet space: No
Addition: No
Conversion: No

11 Floor 2 - Foyer



Max Dimensions: 6'7" x 3'4"
Calculated Area: 23 sq. ft
Included: Yes

Heated: Yes
Finished: Yes
Enclosed: Yes
Contiguous: Yes
Permitted: Yes
Wet space: No
Addition: No
Conversion: No

12 Floor 2 - Primary Bedroom



Max Dimensions: 15'1" x 18'7"
Calculated Area: 228 sq. ft
Included: Yes

Heated: Yes
Finished: Yes
Enclosed: Yes
Contiguous: Yes
Permitted: Yes
Wet space: No
Addition: No
Conversion: No

13 Floor 2 - Living Room



Max Dimensions: 13'3" x 14'10"
Calculated Area: 196 sq. ft
Included: Yes

Heated: Yes
Finished: Yes
Enclosed: Yes
Contiguous: Yes
Permitted: Yes
Wet space: No
Addition: No
Conversion: No

14 Floor 2 - Hall



Max Dimensions: 28'1" x 5'9"
Calculated Area: 132 sq. ft
Included: Yes

Heated: Yes
Finished: Yes
Enclosed: Yes
Contiguous: Yes
Permitted: Yes
Wet space: No
Addition: No
Conversion: No

Home report

6432 Sugar Ridge Drive, Sugar Loaf Hills, Cave Spring, Roanoke,
Roanoke County, Virginia, United States, 24018

15 Floor 2 - Deck



Max Dimensions: 18'7" x 12'10"
Calculated Area: 236 sq. ft
Included: No

Heated: No
Finished: Yes
Enclosed: No
Contiguous: Yes
Permitted: Yes
Wet space: No
Addition: No
Conversion: No

16 Floor 2 - Bath



Max Dimensions: 6'3" x 12'2"
Calculated Area: 66 sq. ft
Included: Yes

Heated: Yes
Finished: Yes
Enclosed: Yes
Contiguous: Yes
Permitted: Yes
Wet space: Yes
Addition: No
Conversion: No

17 Floor 2 - Bedroom



Max Dimensions: 13'5" x 12'2"
Calculated Area: 163 sq. ft
Included: Yes

Heated: Yes
Finished: Yes
Enclosed: Yes
Contiguous: Yes
Permitted: Yes
Wet space: No
Addition: No
Conversion: No

6432 Sugar Ridge Drive, Sugar Loaf Hills, Cave Spring, Roanoke,
Roanoke County, Virginia, United States, 24018

18 Floor 2 - Bedroom



Max Dimensions: 10'9" x 8'9"
Calculated Area: 94 sq. ft
Included: Yes

Heated: Yes
Finished: Yes
Enclosed: Yes
Contiguous: Yes
Permitted: Yes
Wet space: No
Addition: No
Conversion: No