

Home report

397911 W 2400 Rd, Bartlesville, Washington County, Oklahoma,  
United States, 74006




Total Area: 3567 sq. ft

Floor 1: 3567 sq. ft

Excluded: Walls: 189 sq. ft

Property summary

 1 Floors

 4 Bedrooms

 2 Bathrooms

Home report

**397911 W 2400 Rd, Bartlesville, Washington County, Oklahoma,  
United States, 74006**



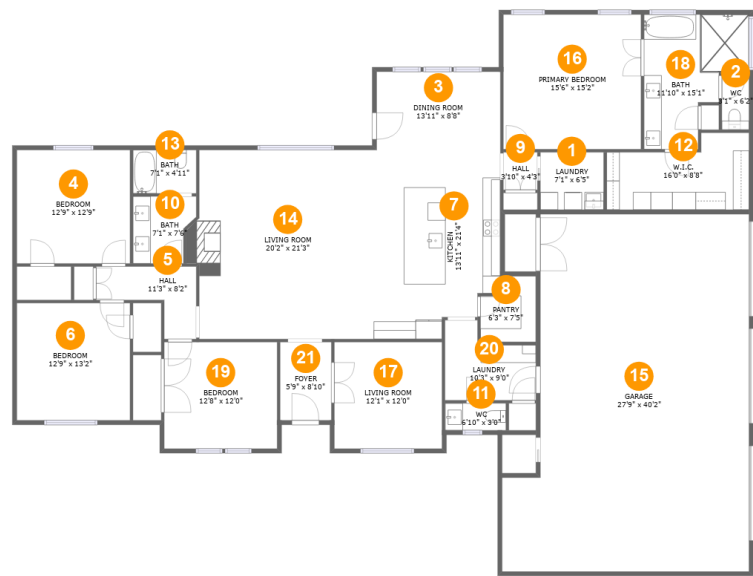
**1**  
Half baths



**1**  
Garages

Home report

397911 W 2400 Rd, Bartlesville, Washington County, Oklahoma,  
United States, 74006



Room dimensions

Floor 1

Total:3567sqft   Excluded: 0sqft

#		Max Dimensions	sqft	Included
1	Laundry	7'1" x 6'5"	46 sq. ft	Yes
2	WC	3'1" x 6'2"	19 sq. ft	Yes
3	Dining Room	13'11" x 8'8"	121 sq. ft	Yes
4	Bedroom	12'9" x 12'9"	162 sq. ft	Yes
5	Hall	11'3" x 8'2"	58 sq. ft	Yes
6	Bedroom	12'9" x 13'2"	168 sq. ft	Yes
7	Kitchen	13'11" x 21'4"	274 sq. ft	Yes
8	Pantry	6'3" x 7'5"	40 sq. ft	Yes
9	Hall	3'10" x 4'3"	16 sq. ft	Yes
10	Bath	7'1" x 7'6"	47 sq. ft	Yes
11	WC	6'10" x 3'0"	21 sq. ft	Yes

## Home report

**397911 W 2400 Rd, Bartlesville, Washington County, Oklahoma,  
United States, 74006**

#		Max Dimensions	sqft	Included
12	W.I.C.	16'0" x 8'8"	115 sq. ft	Yes
13	Bath	7'1" x 4'11"	35 sq. ft	Yes
14	Living Room	20'2" x 21'3"	430 sq. ft	Yes
15	Garage	27'9" x 40'2"	987 sq. ft	Yes
16	Primary Bedroom	15'6" x 15'2"	234 sq. ft	Yes
17	Living Room	12'1" x 12'0"	145 sq. ft	Yes
18	Bath	11'10" x 15'1"	137 sq. ft	Yes
19	Bedroom	12'8" x 12'0"	152 sq. ft	Yes
20	Laundry	10'3" x 9'0"	74 sq. ft	Yes
21	Foyer	5'9" x 8'10"	51 sq. ft	Yes

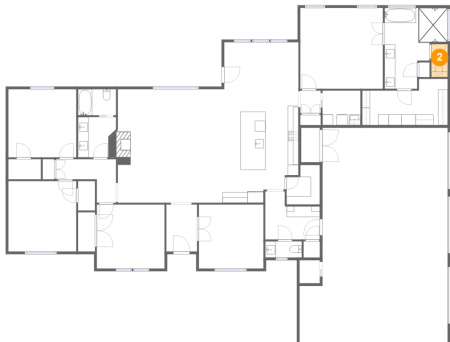
1 Floor 1 - Laundry



Max Dimensions: 7'1" x 6'5"  
Calculated Area: 46 sq. ft  
Included: Yes

Heated: Yes  
Finished: Yes  
Enclosed: Yes  
Contiguous: Yes  
Permitted: Yes  
Wet space: No  
Addition: No  
Conversion: No

2 Floor 1 - WC



Max Dimensions: 3'1" x 6'2"  
Calculated Area: 19 sq. ft  
Included: Yes

Heated: Yes  
Finished: Yes  
Enclosed: Yes  
Contiguous: Yes  
Permitted: Yes  
Wet space: Yes  
Addition: No  
Conversion: No

397911 W 2400 Rd, Bartlesville, Washington County, Oklahoma,  
United States, 74006

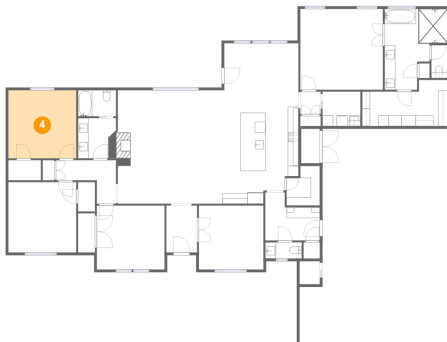
### 3 Floor 1 - Dining Room



Max Dimensions: 13'11" x 8'8"  
Calculated Area: 121 sq. ft  
Included: Yes

Heated: Yes  
Finished: Yes  
Enclosed: Yes  
Contiguous: Yes  
Permitted: Yes  
Wet space: No  
Addition: No  
Conversion: No

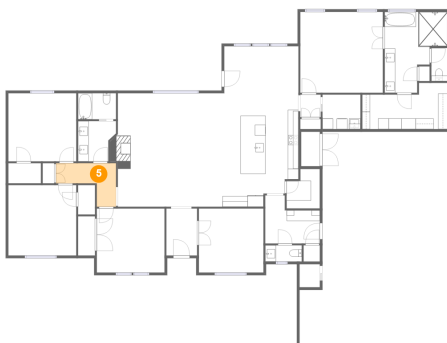
### 4 Floor 1 - Bedroom



Max Dimensions: 12'9" x 12'9"  
Calculated Area: 162 sq. ft  
Included: Yes

Heated: Yes  
Finished: Yes  
Enclosed: Yes  
Contiguous: Yes  
Permitted: Yes  
Wet space: No  
Addition: No  
Conversion: No

### 5 Floor 1 - Hall

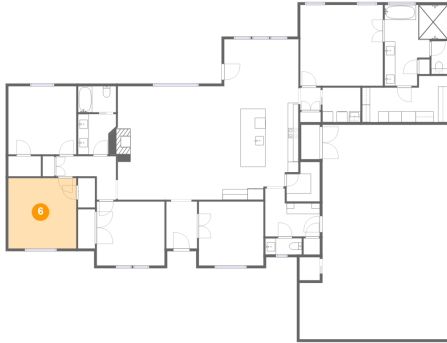


Max Dimensions: 11'3" x 8'2"  
Calculated Area: 58 sq. ft  
Included: Yes

Heated: Yes  
Finished: Yes  
Enclosed: Yes  
Contiguous: Yes  
Permitted: Yes  
Wet space: No  
Addition: No  
Conversion: No

397911 W 2400 Rd, Bartlesville, Washington County, Oklahoma,  
United States, 74006

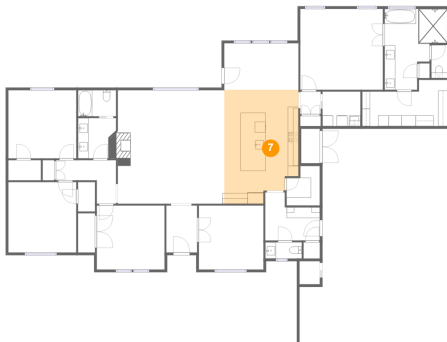
## 6 Floor 1 - Bedroom



Max Dimensions: 12'9" x 13'2"  
Calculated Area: 168 sq. ft  
Included: Yes

Heated: Yes  
Finished: Yes  
Enclosed: Yes  
Contiguous: Yes  
Permitted: Yes  
Wet space: No  
Addition: No  
Conversion: No

## 7 Floor 1 - Kitchen



Max Dimensions: 13'11" x 21'4"  
Calculated Area: 274 sq. ft  
Included: Yes

Heated: Yes  
Finished: Yes  
Enclosed: Yes  
Contiguous: Yes  
Permitted: Yes  
Wet space: No  
Addition: No  
Conversion: No

## 8 Floor 1 - Pantry



Max Dimensions: 6'3" x 7'5"  
Calculated Area: 40 sq. ft  
Included: Yes

Heated: Yes  
Finished: Yes  
Enclosed: Yes  
Contiguous: Yes  
Permitted: Yes  
Wet space: No  
Addition: No  
Conversion: No

397911 W 2400 Rd, Bartlesville, Washington County, Oklahoma,  
United States, 74006

## 9 Floor 1 - Hall



Max Dimensions: 3'10" x 4'3"  
Calculated Area: 16 sq. ft  
Included: Yes

Heated: Yes  
Finished: Yes  
Enclosed: Yes  
Contiguous: Yes  
Permitted: Yes  
Wet space: No  
Addition: No  
Conversion: No

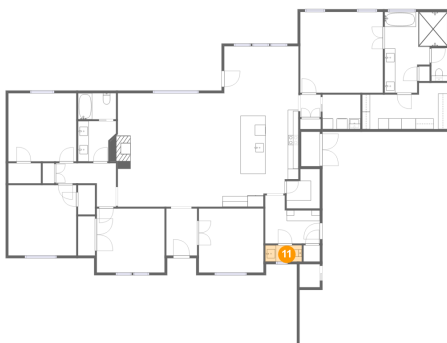
## 10 Floor 1 - Bath



Max Dimensions: 7'1" x 7'6"  
Calculated Area: 47 sq. ft  
Included: Yes

Heated: Yes  
Finished: Yes  
Enclosed: Yes  
Contiguous: Yes  
Permitted: Yes  
Wet space: Yes  
Addition: No  
Conversion: No

## 11 Floor 1 - WC



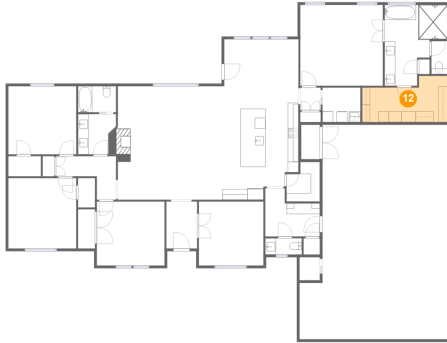
Max Dimensions: 6'10" x 3'0"  
Calculated Area: 21 sq. ft  
Included: Yes

Heated: Yes  
Finished: Yes  
Enclosed: Yes  
Contiguous: Yes  
Permitted: Yes  
Wet space: Yes  
Addition: No  
Conversion: No



397911 W 2400 Rd, Bartlesville, Washington County, Oklahoma,  
United States, 74006

## 12 Floor 1 - W.I.C.



Max Dimensions: 16'0" x 8'8"  
Calculated Area: 115 sq. ft  
Included: Yes

Heated: Yes  
Finished: Yes  
Enclosed: Yes  
Contiguous: Yes  
Permitted: Yes  
Wet space: No  
Addition: No  
Conversion: No

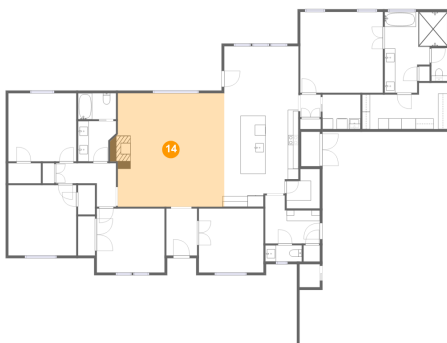
## 13 Floor 1 - Bath



Max Dimensions: 7'1" x 4'11"  
Calculated Area: 35 sq. ft  
Included: Yes

Heated: Yes  
Finished: Yes  
Enclosed: Yes  
Contiguous: Yes  
Permitted: Yes  
Wet space: Yes  
Addition: No  
Conversion: No

## 14 Floor 1 - Living Room

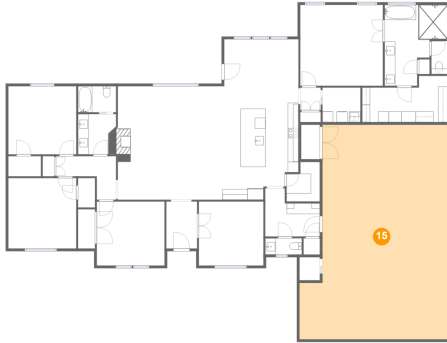


Max Dimensions: 20'2" x 21'3"  
Calculated Area: 430 sq. ft  
Included: Yes

Heated: Yes  
Finished: Yes  
Enclosed: Yes  
Contiguous: Yes  
Permitted: Yes  
Wet space: No  
Addition: No  
Conversion: No

397911 W 2400 Rd, Bartlesville, Washington County, Oklahoma,  
United States, 74006

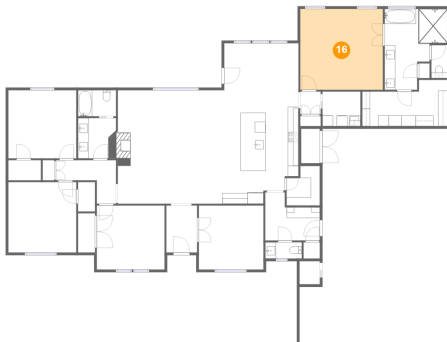
## 15 Floor 1 - Garage



Max Dimensions: 27'9" x 40'2"  
Calculated Area: 987 sq. ft  
Included: No

Heated: No  
Finished: Yes  
Enclosed: Yes  
Contiguous: Yes  
Permitted: Yes  
Wet space: No  
Addition: No  
Conversion: No

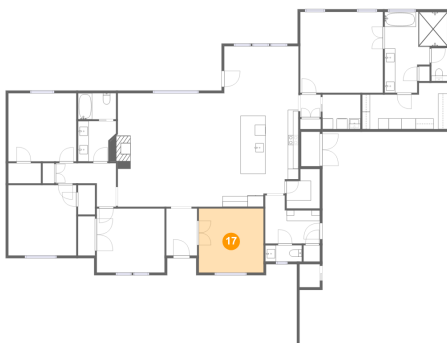
## 16 Floor 1 - Primary Bedroom



Max Dimensions: 15'6" x 15'2"  
Calculated Area: 234 sq. ft  
Included: Yes

Heated: Yes  
Finished: Yes  
Enclosed: Yes  
Contiguous: Yes  
Permitted: Yes  
Wet space: No  
Addition: No  
Conversion: No

## 17 Floor 1 - Living Room



Max Dimensions: 12'1" x 12'0"  
Calculated Area: 145 sq. ft  
Included: Yes

Heated: Yes  
Finished: Yes  
Enclosed: Yes  
Contiguous: Yes  
Permitted: Yes  
Wet space: No  
Addition: No  
Conversion: No

397911 W 2400 Rd, Bartlesville, Washington County, Oklahoma,  
United States, 74006

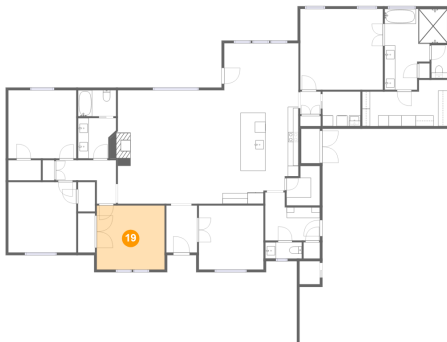
### 18 Floor 1 - Bath



Max Dimensions: 11'10" x 15'1"  
Calculated Area: 137 sq. ft  
Included: Yes

Heated: Yes  
Finished: Yes  
Enclosed: Yes  
Contiguous: Yes  
Permitted: Yes  
Wet space: Yes  
Addition: No  
Conversion: No

### 19 Floor 1 - Bedroom



Max Dimensions: 12'8" x 12'0"  
Calculated Area: 152 sq. ft  
Included: Yes

Heated: Yes  
Finished: Yes  
Enclosed: Yes  
Contiguous: Yes  
Permitted: Yes  
Wet space: No  
Addition: No  
Conversion: No

### 20 Floor 1 - Laundry

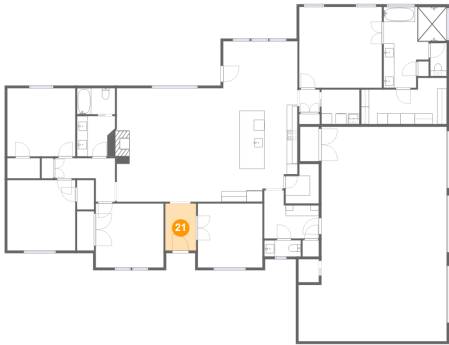


Max Dimensions: 10'3" x 9'0"  
Calculated Area: 74 sq. ft  
Included: Yes

Heated: Yes  
Finished: Yes  
Enclosed: Yes  
Contiguous: Yes  
Permitted: Yes  
Wet space: No  
Addition: No  
Conversion: No

Home report  
397911 W 2400 Rd, Bartlesville, Washington County, Oklahoma,  
United States, 74006

**21** Floor 1 - Foyer



Max Dimensions: 5'9" x 8'10"  
Calculated Area: 51 sq. ft  
Included: Yes

Heated: Yes  
Finished: Yes  
Enclosed: Yes  
Contiguous: Yes  
Permitted: Yes  
Wet space: No  
Addition: No  
Conversion: No