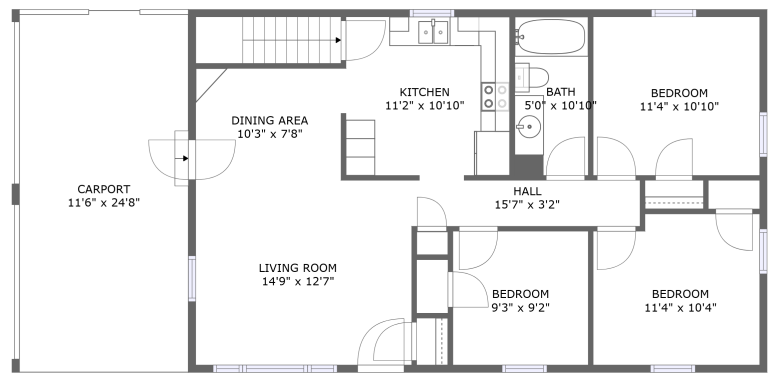
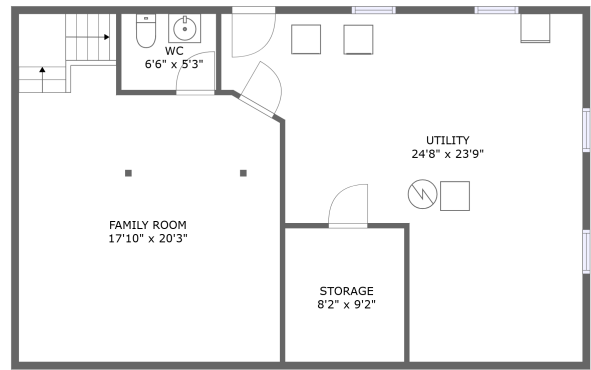


Home report

936 Ingleside Lane, Salem, Salem city, Virginia, United States, 24153



FLOOR 2



FLOOR 1


Total GLA: 978 sq. ft

Below Ground: 434 sq. ft, Floor 2: 978 sq. ft

Excluded: Utility 466 sq. ft, Storage 79 sq. ft, Carport 284 sq. ft

Property summary

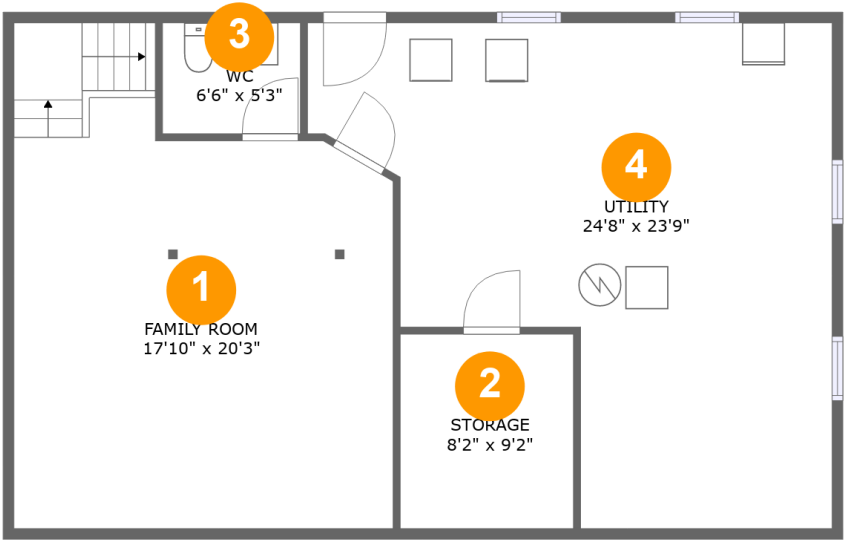
 **2** Floors

 **3** Bedrooms

 **1** Bathrooms

 **1** Half baths

936 Ingleside Lane, Salem, Salem city, Virginia, United States, 24153

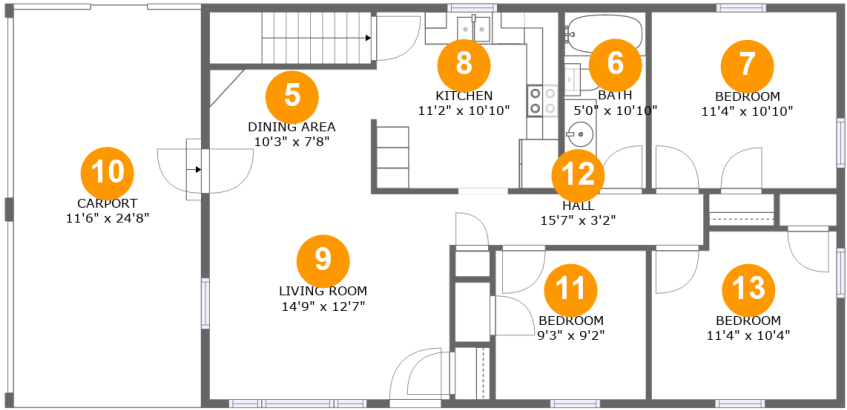


Room dimensions

Floor 1 Below ground Total:434sqft Excluded: 545sqft

#		Max Dimensions	sqft	Included
1	Family Room	17'10" x 20'3"	359 sq. ft	Yes
2	Storage	8'2" x 9'2"	74 sq. ft	No
3	WC	6'6" x 5'3"	34 sq. ft	Yes
4	Utility	24'8" x 23'9"	429 sq. ft	No

936 Ingleside Lane, Salem, Salem city, Virginia, United States, 24153



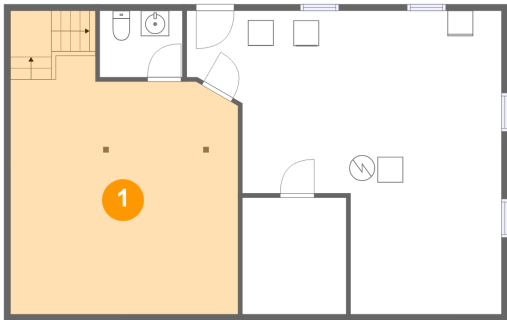
Room dimensions

Floor 2 Total:978sqft Excluded: 284sqft

#		Max Dimensions	sqft	Included
5	Dining Area	10'3" x 7'8"	77 sq. ft	Yes
6	Bath	5'0" x 10'10"	54 sq. ft	Yes
7	Bedroom	11'4" x 10'10"	123 sq. ft	Yes
8	Kitchen	11'2" x 10'10"	121 sq. ft	Yes
9	Living Room	14'9" x 12'7"	186 sq. ft	Yes
10	Carport	11'6" x 24'8"	283 sq. ft	No
11	Bedroom	9'3" x 9'2"	84 sq. ft	Yes
12	Hall	15'7" x 3'2"	49 sq. ft	Yes
13	Bedroom	11'4" x 10'4"	113 sq. ft	Yes

936 Ingleside Lane, Salem, Salem city, Virginia, United States, 24153

1 Floor 1 - Family Room



Max Dimensions: 17'10" x 20'3"
Calculated Area: 359 sq. ft
Included: Yes

Heated: Yes
Finished: Yes
Enclosed: Yes
Contiguous: Yes
Permitted: Yes
Wet space: No
Addition: No
Conversion: No

2 Floor 1 - Storage

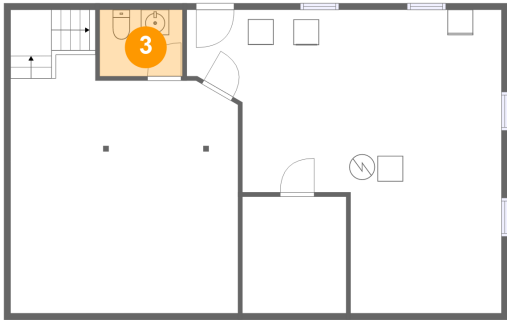


Max Dimensions: 8'2" x 9'2"
Calculated Area: 74 sq. ft
Included: No

Heated: No
Finished: No
Enclosed: No
Contiguous: Yes
Permitted: Yes
Wet space: No
Addition: No
Conversion: No

936 Ingleside Lane, Salem, Salem city, Virginia, United States, 24153

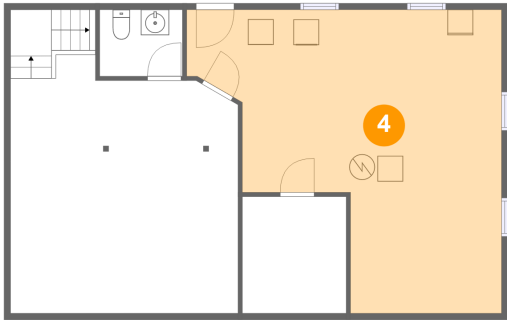
3 Floor 1 - WC



Max Dimensions: 6'6" x 5'3"
Calculated Area: 34 sq. ft
Included: Yes

Heated: Yes
Finished: Yes
Enclosed: Yes
Contiguous: Yes
Permitted: Yes
Wet space: Yes
Addition: No
Conversion: No

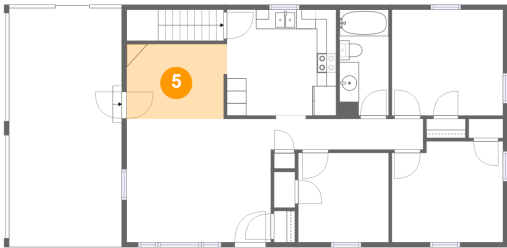
4 Floor 1 - Utility



Max Dimensions: 24'8" x 23'9"
Calculated Area: 429 sq. ft
Included: No

Heated: Yes
Finished: No
Enclosed: Yes
Contiguous: Yes
Permitted: Yes
Wet space: No
Addition: No
Conversion: No

5 Floor 2 - Dining Area

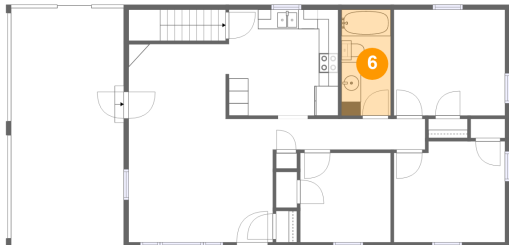


Max Dimensions: 10'3" x 7'8"
Calculated Area: 77 sq. ft
Included: Yes

Heated: Yes
Finished: Yes
Enclosed: Yes
Contiguous: Yes
Permitted: Yes
Wet space: No
Addition: No
Conversion: No

936 Ingleside Lane, Salem, Salem city, Virginia, United States, 24153

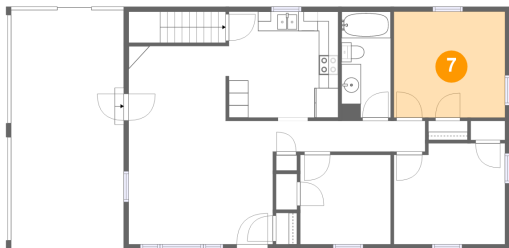
6 Floor 2 - Bath



Max Dimensions: 5'0" x 10'10"
Calculated Area: 54 sq. ft
Included: Yes

Heated: Yes
Finished: Yes
Enclosed: Yes
Contiguous: Yes
Permitted: Yes
Wet space: Yes
Addition: No
Conversion: No

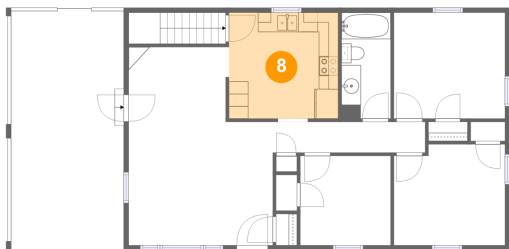
7 Floor 2 - Bedroom



Max Dimensions: 11'4" x 10'10"
Calculated Area: 123 sq. ft
Included: Yes

Heated: Yes
Finished: Yes
Enclosed: Yes
Contiguous: Yes
Permitted: Yes
Wet space: No
Addition: No
Conversion: No

8 Floor 2 - Kitchen

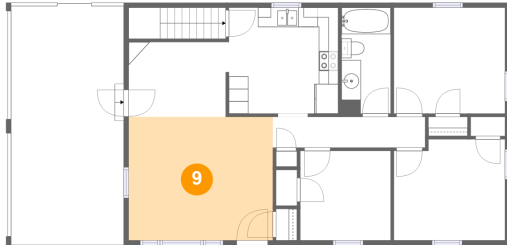


Max Dimensions: 11'2" x 10'10"
Calculated Area: 121 sq. ft
Included: Yes

Heated: Yes
Finished: Yes
Enclosed: Yes
Contiguous: Yes
Permitted: Yes
Wet space: No
Addition: No
Conversion: No

936 Ingleside Lane, Salem, Salem city, Virginia, United States,
24153

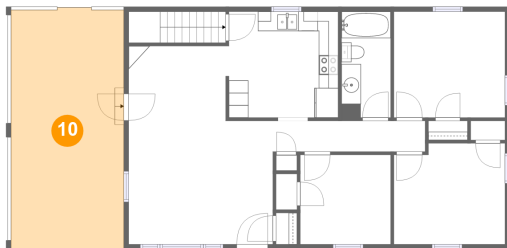
9 Floor 2 - Living Room



Max Dimensions: 14'9" x 12'7"
Calculated Area: 186 sq. ft
Included: Yes

Heated: Yes
Finished: Yes
Enclosed: Yes
Contiguous: Yes
Permitted: Yes
Wet space: No
Addition: No
Conversion: No

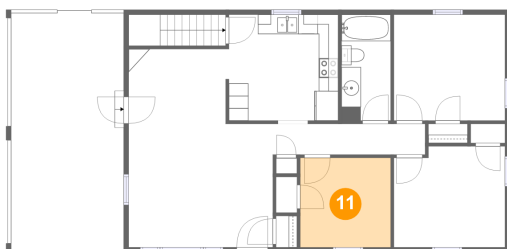
10 Floor 2 - Carport



Max Dimensions: 11'6" x 24'8"
Calculated Area: 283 sq. ft
Included: No

Heated: No
Finished: Yes
Enclosed: No
Contiguous: Yes
Permitted: Yes
Wet space: No
Addition: No
Conversion: No

11 Floor 2 - Bedroom

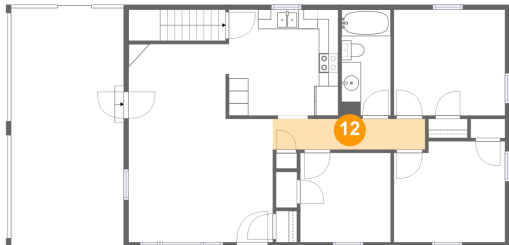


Max Dimensions: 9'3" x 9'2"
Calculated Area: 84 sq. ft
Included: Yes

Heated: Yes
Finished: Yes
Enclosed: Yes
Contiguous: Yes
Permitted: Yes
Wet space: No
Addition: No
Conversion: No

936 Ingleside Lane, Salem, Salem city, Virginia, United States, 24153

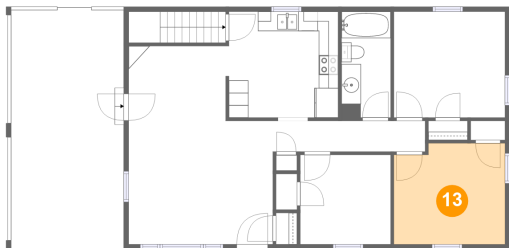
12 Floor 2 - Hall



Max Dimensions: 15'7" x 3'2"
Calculated Area: 49 sq. ft
Included: Yes

Heated: Yes
Finished: Yes
Enclosed: Yes
Contiguous: Yes
Permitted: Yes
Wet space: No
Addition: No
Conversion: No

13 Floor 2 - Bedroom



Max Dimensions: 11'4" x 10'4"
Calculated Area: 113 sq. ft
Included: Yes

Heated: Yes
Finished: Yes
Enclosed: Yes
Contiguous: Yes
Permitted: Yes
Wet space: No
Addition: No
Conversion: No