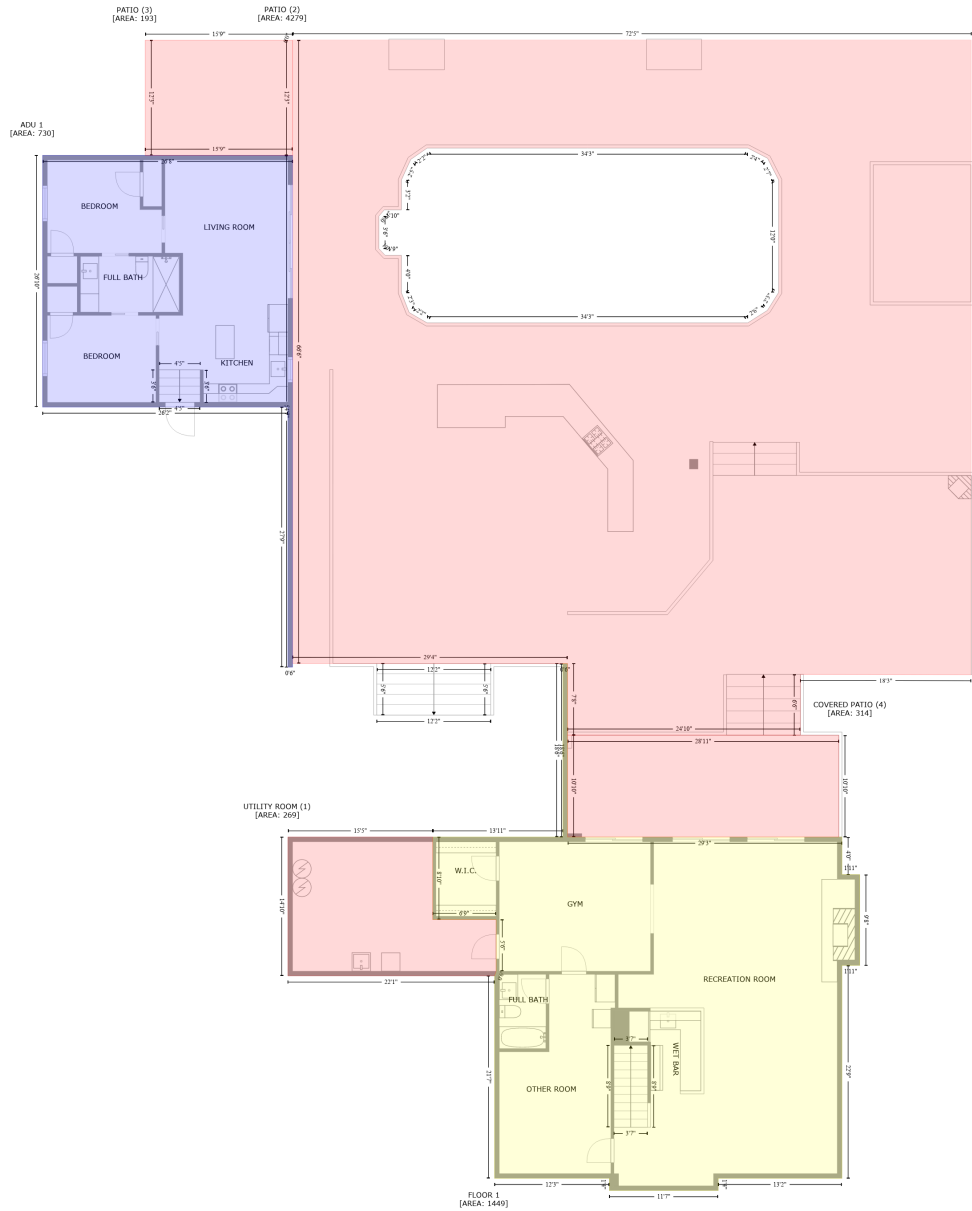


# 1204 Oak Creek Rd, Mahomet, IL, US

Gross Living Area: 4842 sq. ft



Space	Area (sq. ft)	Calculation
FLOOR 1 (Living area)	1449	Coordinate Polygon Area Algorithm using inches $-((835.7 + 835.7) * (664.7 - 886.7) + (835.7 + 1187) * (886.7 - 886.7) + (1187 + 1187) * (886.7 - 934.7) + (1187 + 1209.8) * (934.7 - 934.7) + (1209.8 + 1209.8) * (934.7 - 1050.9) + (1209.8 + 1187) * (1050.9 - 1050.9) + (1187 + 1187) * (1050.9 - 1323.5) + (1187 + 1028.6) * (1323.5 - 1323.5) + (1028.6 + 1028.6) * (1323.5 - 1339.1) + (1028.6 + 889.2) * (1339.1 - 1339.1) + (889.2 + 889.2) * (1339.1 - 1323.5) + (889.2 + 742.3) * (1323.5 - 1323.5) + (742.3 + 742.3) * (1323.5 - 1064.4) + (742.3 + 744.3) * (1064.4 - 1058.4) + (744.3 + 744.3) * (1058.4 - 992.3) + (744.3 + 663.2) * (992.3 - 992.3) + (663.2 + 663.2) * (992.3 - 886.7) + (663.2 + 829.7) * (886.7 - 886.7) +$

# 1204 Oak Creek Rd, Mahomet, IL, US

Gross Living Area: 4842 sq. ft

Space	Area (sq. ft)	Calculation <small>Coordinate Polygon Area Algorithm using inches</small>
ADU 1 (Living area)	730	$(829.7 + 829.7) * (886.7 - 664.7) + (829.7 + 835.7) * (664.7 - 664.7) * 0.5 * 0.00694$ $-((484 + 484) * (14 - 669) + (484 + 478) * (669 - 669) + (478 + 478) * (669 - 336) + (478 + 164) * (336 - 336) + (164 + 164) * (336 - 14) + (164 + 484) * (14 - 14)) * 0.5 * 0.00694$
UTILITY ROOM (Non-living area)	269	$-((663.2 + 663.2) * (886.7 - 992.3) + (663.2 + 744.3) * (992.3 - 992.3) + (744.3 + 744.3) * (992.3 - 1058.4) + (744.3 + 742.3) * (1058.4 - 1064.4) + (742.3 + 477.7) * (1064.4 - 1064.4) + (477.7 + 477.7) * (1064.4 - 886.7) + (477.7 + 663.2) * (886.7 - 886.7)) * 0.5 * 0.00694$
PATIO (Non-living area)	4279	$-((1352.6 + 1352.6) * (-133.5 - 678.9) + (1352.6 + 1133.7) * (678.9 - 678.6) + (1133.7 + 1133.7) * (678.6 - 756.4) + (1133.7 + 835.7) * (756.4 - 756.4) + (835.7 + 835.7) * (756.4 - 664.7) + (835.7 + 483.7) * (664.7 - 664.5) + (483.7 + 483.7) * (664.5 - -133) + (483.7 + 483.9) * (-133 - -133.5) + (483.9 + 1352.6) * (-133.5 - -133.5)) * 0.5 * 0.00694 + -((1066.5 + 656) * (4.9 - 4.9) + (656 + 635) * (4.9 - 19.5) + (635 + 623.1) * (19.5 - 45.6) + (623.1 + 623.1) * (45.6 - 84) + (623.1 + 601.1) * (84 - 84) + (601.1 + 594.2) * (84 - 92) + (594.2 + 594.2) * (92 - 133.7) + (594.2 + 602.2) * (133.7 - 142.1) + (602.2 + 623.1) * (142.1 - 142.1) + (623.1 + 623.1) * (142.1 - 190.2) + (623.1 + 633) * (190.2 - 215.4) + (633 + 655.9) * (215.4 - 228.6) + (655.9 + 1066.4) * (228.6 - 228.6) + (1066.4 + 1091.6) * (228.6 - 212.6) + (1091.6 + 1105.9) * (212.6 - 189.8) + (1105.9 + 1105.9) * (189.8 - 45.7) + (1105.9 + 1091.7) * (45.7 - 18) + (1091.7 + 1066.5) * (18 - 4.9)) * 0.5 * 0.00694$
PATIO (Non-living area)	193	$-((483.7 + 483.7) * (-133 - 14.2) + (483.7 + 295) * (14.2 - 14.3) + (295 + 295) * (14.3 - -133) + (295 + 483.7) * (-133 - -133)) * 0.5 * 0.00694$
COVERED PATIO (Non-living area)	314	$-((1183 + 1183) * (756.4 - 886.7) + (1183 + 835.7) * (886.7 - 886.7) + (835.7 + 835.7) * (886.7 - 756.4) + (835.7 + 1183) * (756.4 - 756.4)) * 0.5 * 0.00694$



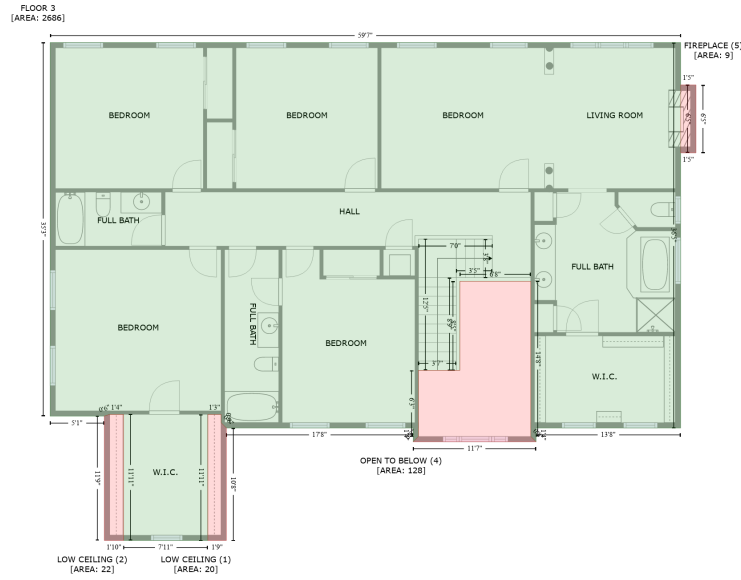
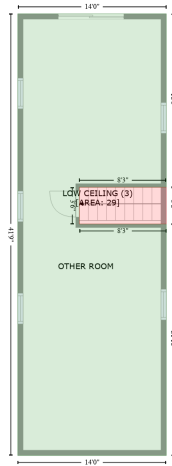
# 1204 Oak Creek Rd, Mahomet, IL, US

Gross Living Area: 4842 sq. ft

Space	Area (sq. ft)	Calculation <small>Coordinate Polygon Area Algorithm using inches</small>
		$1086.5 + (629.9 + 629.9) * (1086.5 - 1056.6) + (629.9 + 408.5) * (1056.6 - 1056.6) + (408.5 + 408.5) * (1056.6 - 750.3) + (408.5 + 414.5) * (750.3 - 750.3) + (414.5 + 414.5) * (750.3 - 744.3) + (414.5 + 470.3) * (744.3 - 744.3) * 0.5 * 0.00694$
GARAGE (Non-living area)	675	$-((629.9 + 629.9) * (1056.6 - 1086.5) + (629.9 + 720.7) * (1086.5 - 1086.5) + (720.7 + 720.7) * (1086.5 - 1309.7) + (720.7 + 726.7) * (1309.7 - 1309.7) + (726.7 + 726.7) * (1309.7 - 1443.2) + (726.7 + 464.3) * (1443.2 - 1443.2) + (464.3 + 464.3) * (1443.2 - 1056.6) + (464.3 + 629.9) * (1056.6 - 1056.6)) * 0.5 * 0.00694$
GARAGE (Non-living area)	918	$-((293.4 + 295.5) * (320.6 - 322.6) + (295.5 + 356) * (322.6 - 322.6) + (356 + 358) * (322.6 - 320.6) + (358 + 470.3) * (320.6 - 320.6) + (470.3 + 470.3) * (320.6 - 744.3) + (470.3 + 414.5) * (744.3 - 744.3) + (414.5 + 414.5) * (744.3 - 750.3) + (414.5 + 177.3) * (750.3 - 750.3) + (177.3 + 177.3) * (750.3 - 653.5) + (177.3 + 156.8) * (653.5 - 653.5) + (156.8 + 156.8) * (653.5 - 320.6) + (156.8 + 293.4) * (320.6 - 320.6)) * 0.5 * 0.00694$
OTHER ROOM (Non-living area)	21	$-((358 + 358) * (274.9 - 320.6) + (358 + 352) * (320.6 - 326.6) + (352 + 352) * (326.6 - 322.6) + (352 + 299.4) * (322.6 - 322.6) + (299.4 + 299.4) * (322.6 - 326.6) + (299.4 + 293.4) * (326.6 - 320.6) + (293.4 + 293.4) * (320.6 - 274.9) + (293.4 + 358) * (274.9 - 274.9)) * 0.5 * 0.00694$
COVERED PATIO (Non-living area)	912	$-((574 + 574) * (660.7 - 722.9) + (574 + 793.9) * (722.9 - 722.9) + (793.9 + 793.9) * (722.9 - 681.9) + (793.9 + 963) * (681.9 - 681.9) + (963 + 963) * (681.9 - 819.3) + (963 + 1330.5) * (819.3 - 819.3) + (1330.5 + 1331.1) * (819.3 - 1015.5) + (1331.1 + 1196.4) * (1015.5 - 1015.5) + (1196.4 + 1196.4) * (1015.5 - 926.9) + (1196.4 + 1179) * (926.9 - 926.9) + (1179 + 1179) * (926.9 - 878.9) + (1179 + 470.3) * (878.9 - 878.9) + (470.3 + 470.3) * (878.9 - 660.7) + (470.3 + 574) * (660.7 - 660.7)) * 0.5 * 0.00694$

# 1204 Oak Creek Rd, Mahomet, IL, US

Gross Living Area: 4842 sq. ft



## Space

Area (sq. ft)

Calculation Coordinate Polygon Area Algorithm using inches

FLOOR 3  
(Living area)

2686

$$\begin{aligned}
 & -((1174.1 + 1174.1) * (884.1 - 1320.9) + (1174.1 + 1010.2) * (1320.9 - 1320.9) + (1010.2 + \\
 & 1010.2) * (1320.9 - 1336.6) + (1010.2 + 1004.2) * (1336.6 - 1330.6) + (1004.2 + 1004.2) * \\
 & (1330.6 - 1154.6) + (1004.2 + 923.8) * (1154.6 - 1154.6) + (923.8 + 923.8) * (1154.6 - 1255.6) + \\
 & (923.8 + 876.8) * (1255.6 - 1255.6) + (876.8 + 876.8) * (1255.6 - 1330.6) + (876.8 + 870.8) * \\
 & (1330.6 - 1336.6) + (870.8 + 870.8) * (1336.6 - 1320.9) + (870.8 + 659.1) * (1320.9 - 1320.9) + \\
 & (659.1 + 653.1) * (1320.9 - 1314.9) + (653.1 + 653.1) * (1314.9 - 1305.5) + (653.1 + 638.1) * \\
 & (1305.5 - 1305.5) + (638.1 + 638.1) * (1305.5 - 1448.5) + (638.1 + 542.6) * (1448.5 - 1448.5) +
 \end{aligned}$$

# 1204 Oak Creek Rd, Mahomet, IL, US

Gross Living Area: 4842 sq. ft

Space	Area (sq. ft)	Calculation <small>Coordinate Polygon Area Algorithm using inches</small>
		$(542.6 + 542.6) * (1448.5 - 1305.5) + (542.6 + 526.7) * (1305.5 - 1305.5) + (526.7 + 520.7) * (1305.5 - 1307.5) + (520.7 + 459.3) * (1307.5 - 1307.5) + (459.3 + 459.3) * (1307.5 - 884.1) + (459.3 + 1174.1) * (884.1 - 884.1) * 0.5 * 0.00694 + -((393.8 + 393.8) * (135.3 - 331.9) + (393.8 + 295.2) * (331.9 - 331.9) + (295.2 + 295.2) * (331.9 - 373.5) + (295.2 + 393.8) * (373.5 - 373.5) + (393.8 + 393.8) * (373.5 - 635.9) + (393.8 + 225.5) * (635.9 - 635.9) + (225.5 + 225.5) * (635.9 - 135.3) + (225.5 + 393.8) * (135.3 - 135.3)) * 0.5 * 0.00694$
LOW CEILING (Non-living area)	20	$-((653.1 + 653.1) * (1305.5 - 1314.9) + (653.1 + 659.1) * (1314.9 - 1320.9) + (659.1 + 659.1) * (1320.9 - 1448.5) + (659.1 + 638.1) * (1448.5 - 1448.5) + (638.1 + 638.1) * (1448.5 - 1305.5) + (638.1 + 653.1) * (1305.5 - 1305.5)) * 0.5 * 0.00694$
LOW CEILING (Non-living area)	22	$-((542.6 + 542.6) * (1305.5 - 1448.5) + (542.6 + 520.7) * (1448.5 - 1448.5) + (520.7 + 520.7) * (1448.5 - 1307.5) + (520.7 + 526.7) * (1307.5 - 1305.5) + (526.7 + 542.6) * (1305.5 - 1305.5)) * 0.5 * 0.00694$
LOW CEILING (Non-living area)	29	$-((393.8 + 393.8) * (331.9 - 373.5) + (393.8 + 295.2) * (373.5 - 373.5) + (295.2 + 295.2) * (373.5 - 331.9) + (295.2 + 393.8) * (331.9 - 331.9)) * 0.5 * 0.00694$
OPEN TO BELOW (Non-living area)	128	$-((1004.2 + 1004.2) * (1154.6 - 1330.6) + (1004.2 + 1010.2) * (1330.6 - 1336.6) + (1010.2 + 870.8) * (1336.6 - 1336.6) + (870.8 + 876.8) * (1336.6 - 1330.6) + (876.8 + 876.8) * (1330.6 - 1255.6) + (876.8 + 923.8) * (1255.6 - 1255.6) + (923.8 + 923.8) * (1255.6 - 1154.6) + (923.8 + 1004.2) * (1154.6 - 1154.6)) * 0.5 * 0.00694$
FIREPLACE (Non-living area)	9	$-((1191.4 + 1191.4) * (932.2 - 1009.2) + (1191.4 + 1174.1) * (1009.2 - 1009.2) + (1174.1 + 1174.1) * (1009.2 - 932.2) + (1174.1 + 1191.4) * (932.2 - 932.2)) * 0.5 * 0.00694$