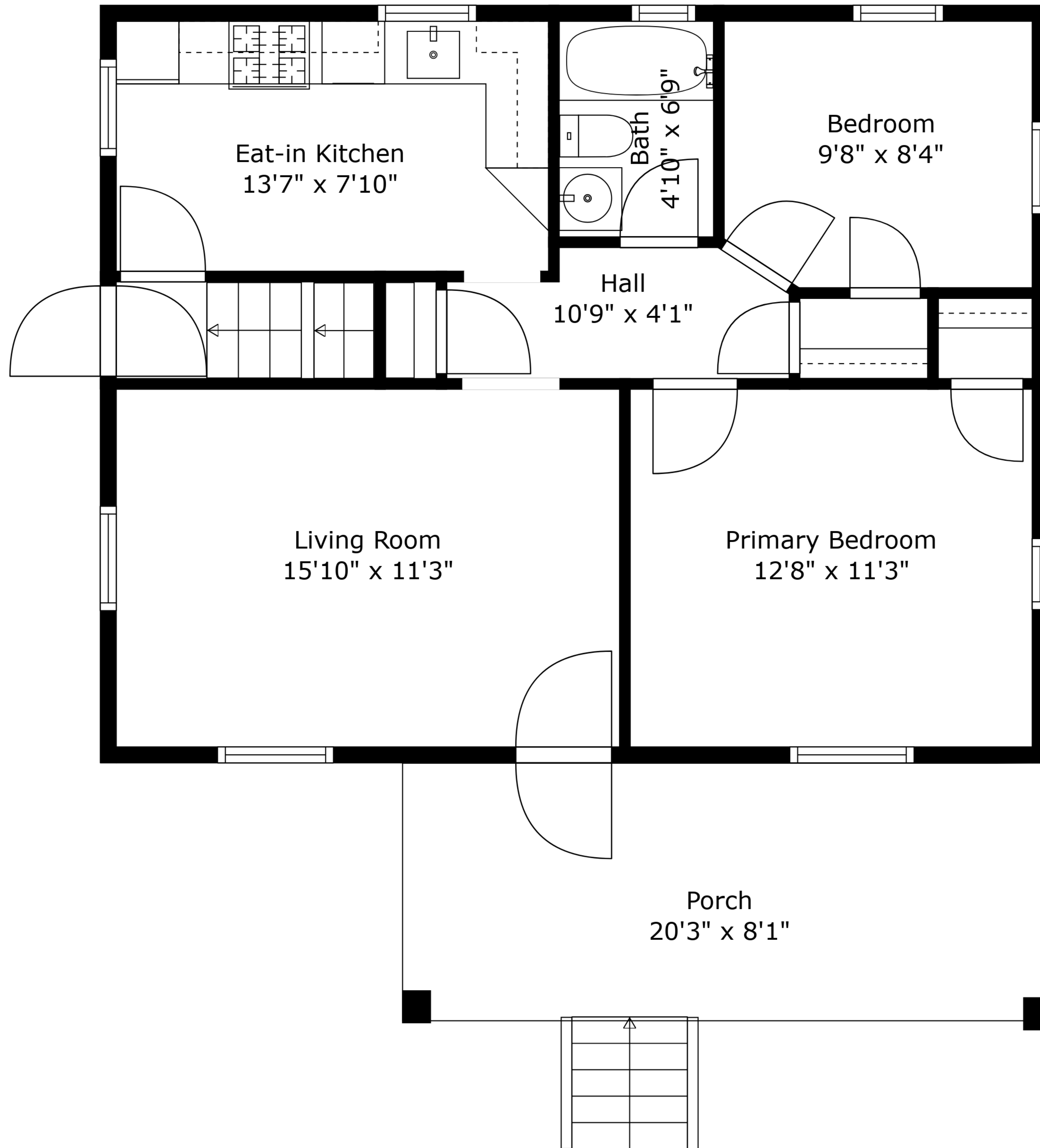


Basement
28'9" x 21'5"

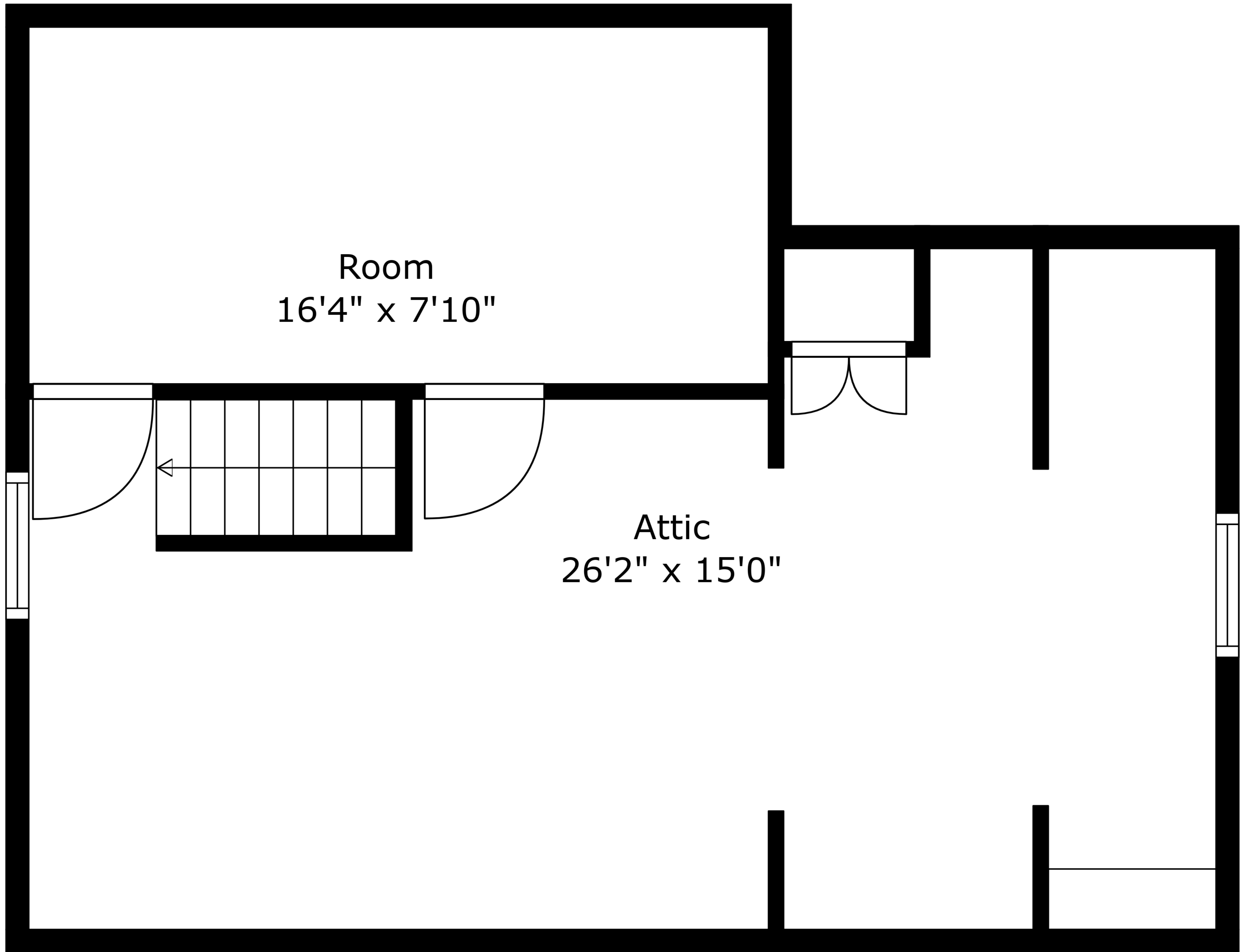
TOTAL: 1341 sq. ft
BELOW GROUND: 617 sq. ft, FLOOR 2: 657 sq. ft, FLOOR 3: 67 sq. ft
EXCLUDED AREAS: PORCH: 164 sq. ft, LOW CEILING: 194 sq. ft, ATTIC: 214 sq. ft

Measurements Are Approximate - Deemed Highly Reliable But Not Guaranteed



TOTAL: 1341 sq. ft
BELOW GROUND: 617 sq. ft, FLOOR 2: 657 sq. ft, FLOOR 3: 67 sq. ft
EXCLUDED AREAS: PORCH: 164 sq. ft, LOW CEILING: 194 sq. ft, ATTIC: 214 sq. ft

Measurements Are Approximate - Deemed Highly Reliable But Not Guaranteed

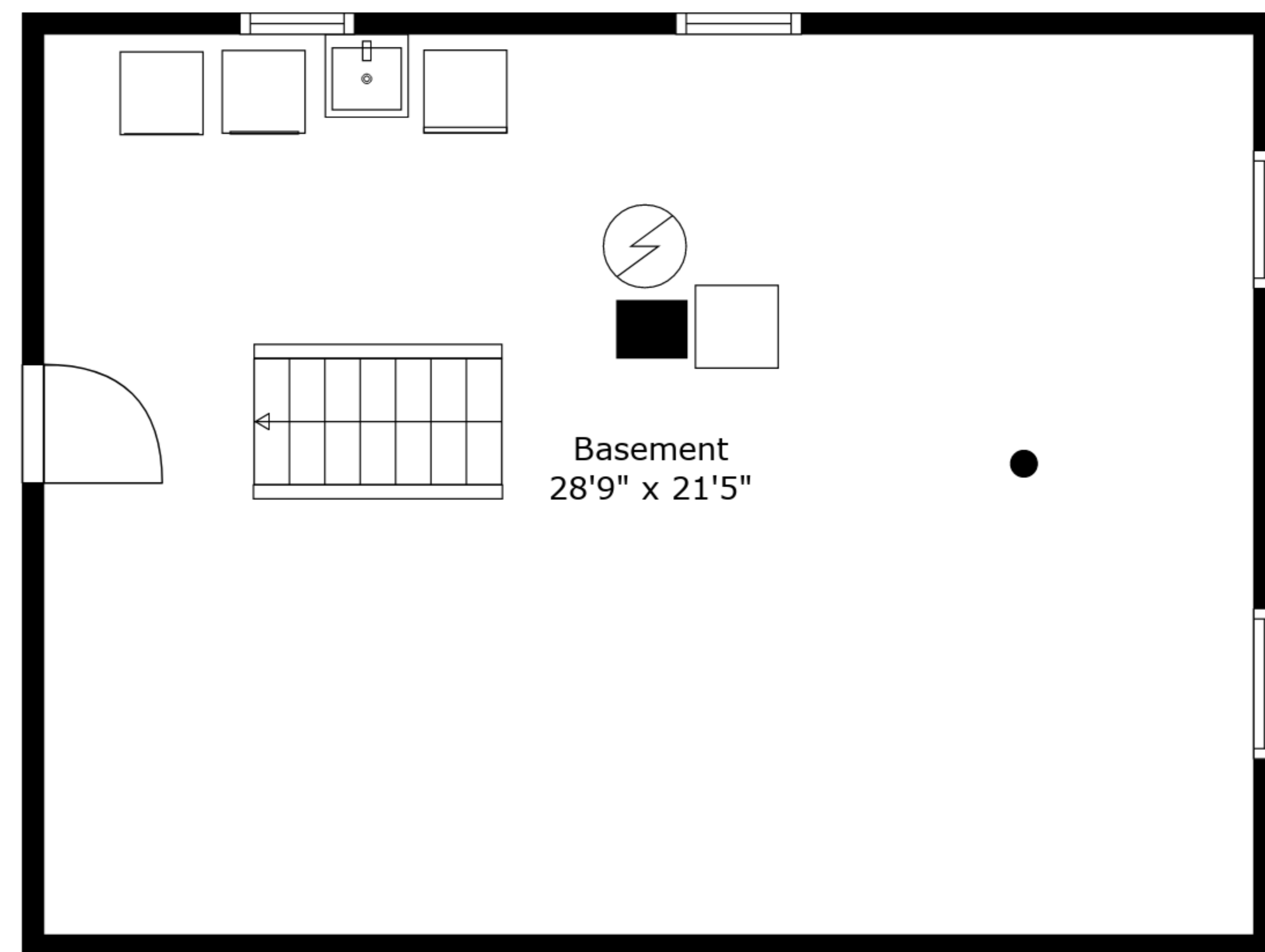
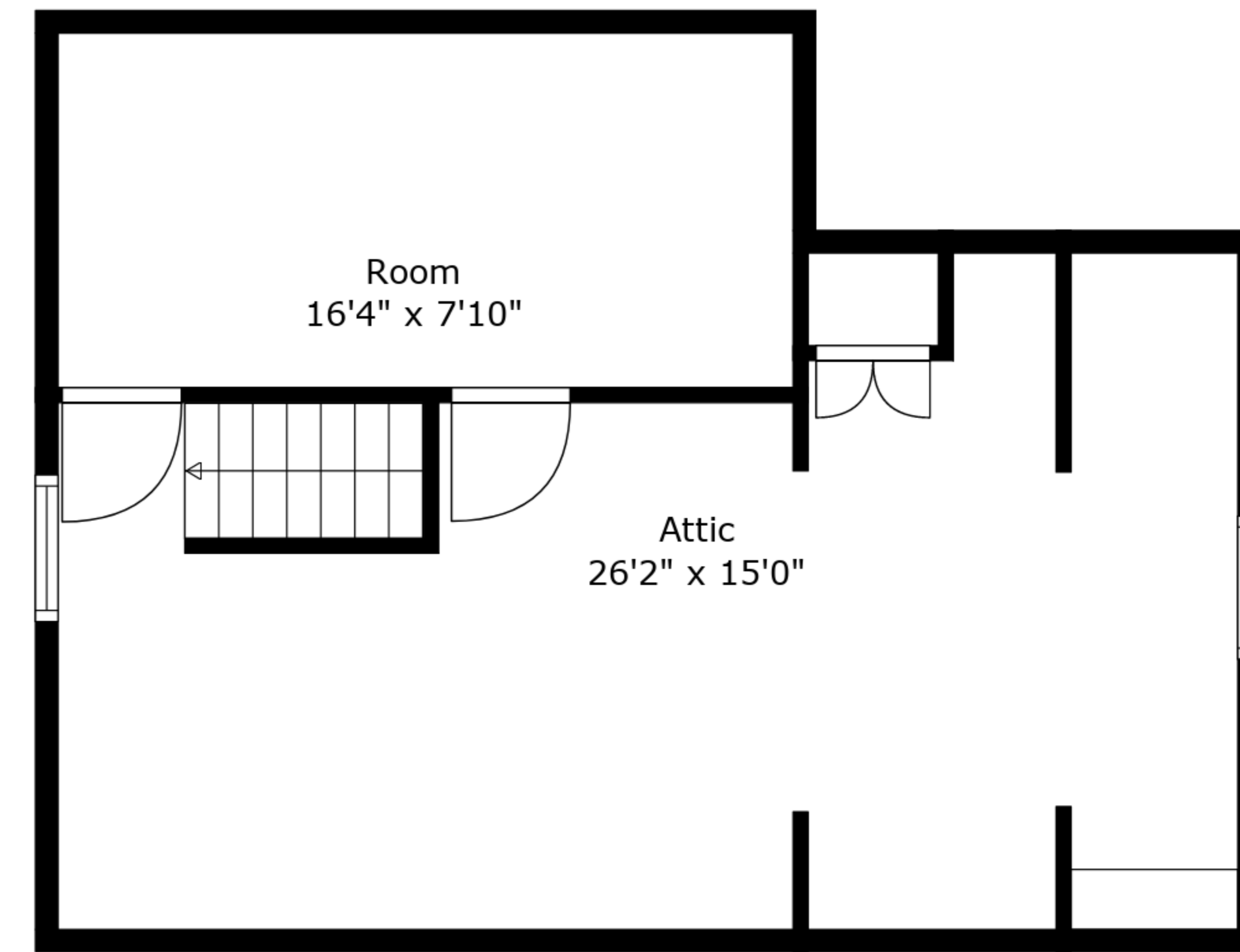
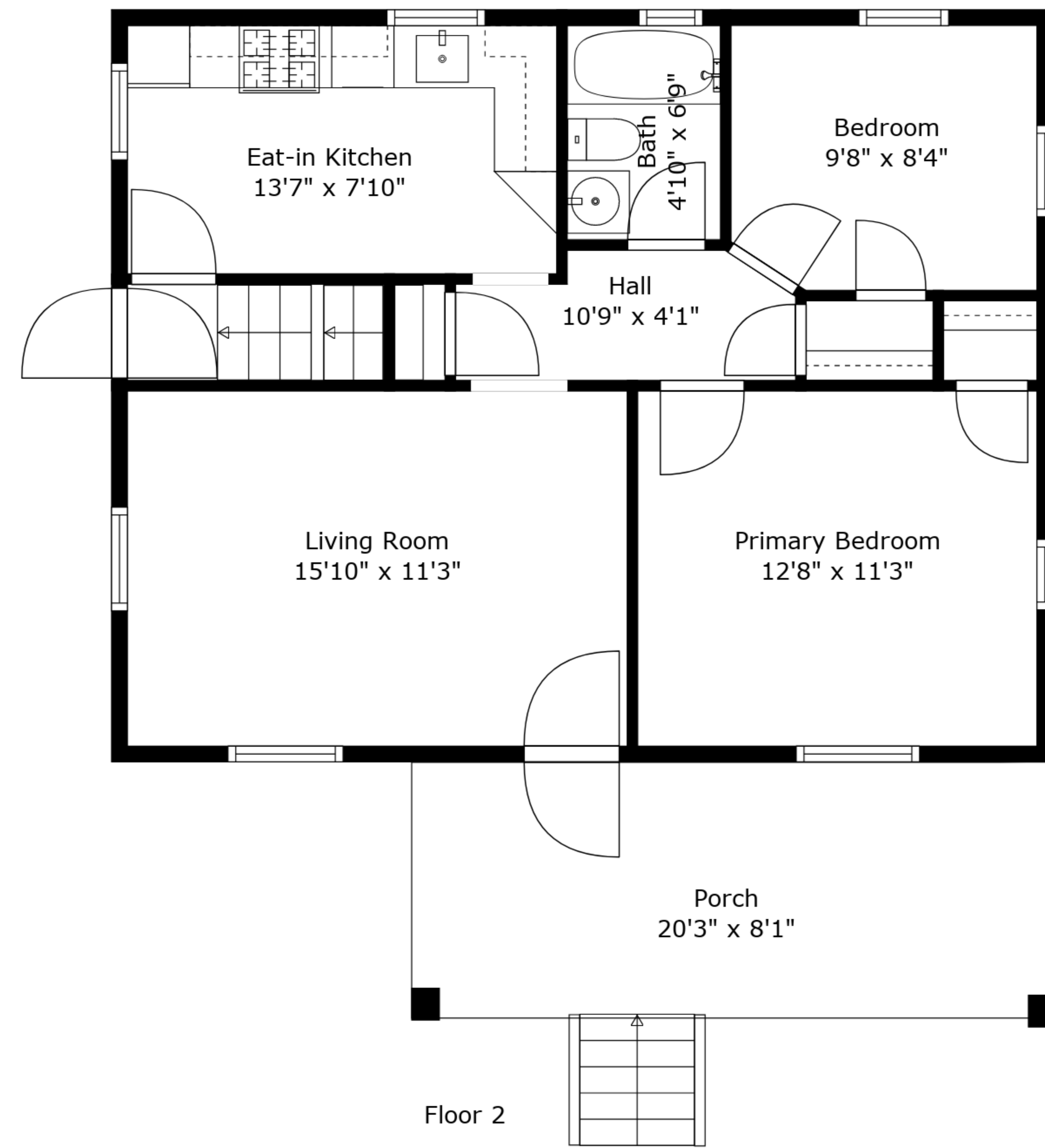


Room
16'4" x 7'10"

Attic
26'2" x 15'0"

TOTAL: 1341 sq. ft
BELOW GROUND: 617 sq. ft, FLOOR 2: 657 sq. ft, FLOOR 3: 67 sq. ft
EXCLUDED AREAS: PORCH: 164 sq. ft, LOW CEILING: 194 sq. ft, ATTIC: 214 sq. ft

Measurements Are Approximate - Deemed Highly Reliable But Not Guaranteed



TOTAL: 1341 sq. ft
 BELOW GROUND: 617 sq. ft, FLOOR 2: 657 sq. ft, FLOOR 3: 67 sq. ft
 EXCLUDED AREAS: PORCH: 164 sq. ft, LOW CEILING: 194 sq. ft, ATTIC: 214 sq. ft

Measurements Are Approximate - Deemed Highly Reliable But Not Guaranteed