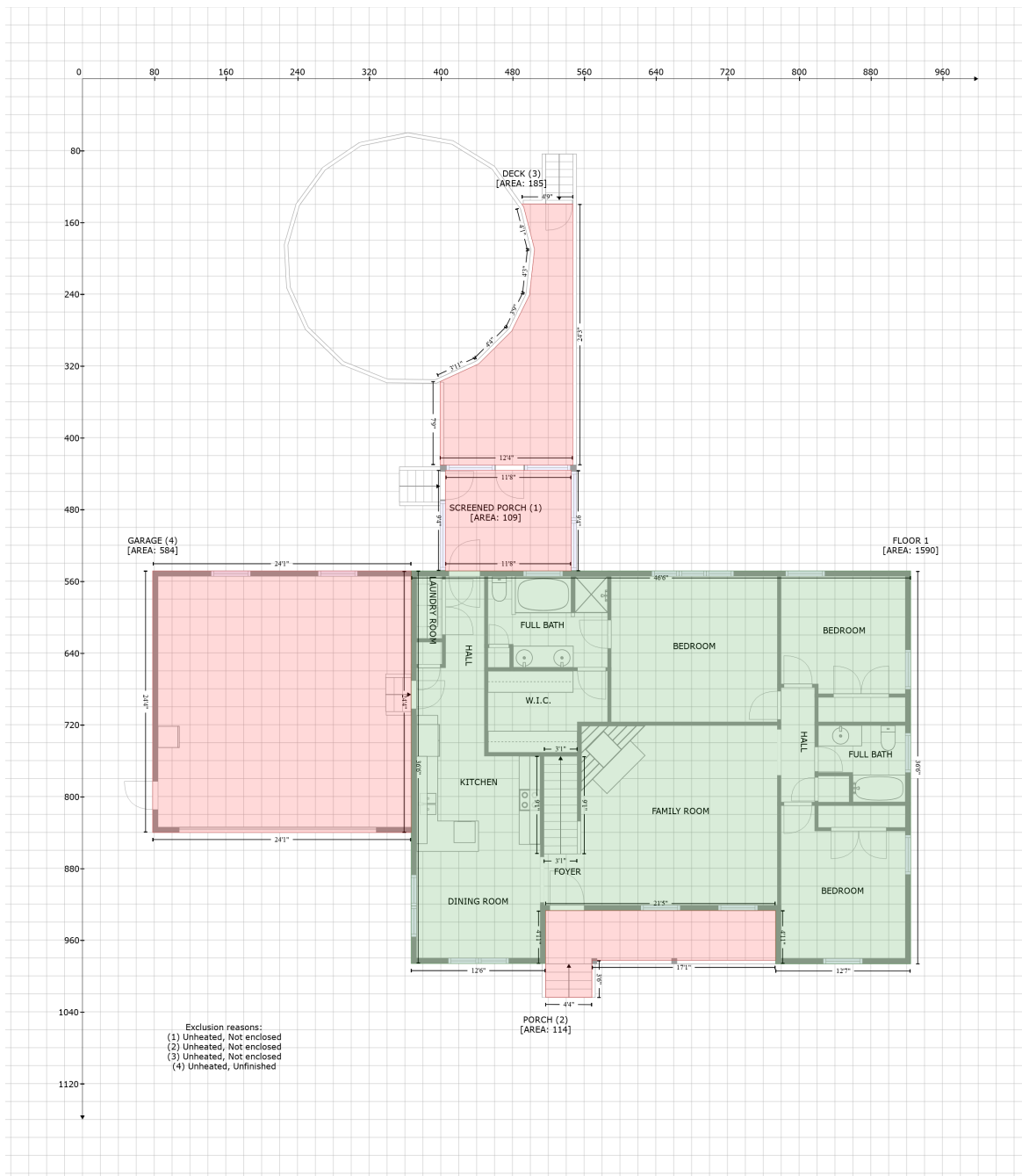


36 Rains Drive, Wendell, Johnston County, North Carolina, United States, 27591

Gross Living Area: 2609 sq. ft



Space	Area (sq. ft)	Calculation
FLOOR 1 (Living area)	1590	$-(924.6 + 924.6) * (548.6 - 986.6) + (924.6 + 773.8) * (986.6 - 986.6) + (773.8 + 773.8) * (986.6 - 927.2) + (773.8 + 517) * (927.2 - 927.2) + (517 + 517) * (927.2 - 986.2) + (517 + 366.9) * (986.2 - 986.2) + (366.9 + 366.9) * (986.2 - 548.6) + (366.9 + 924.6) * (548.6 - 548.6)) * 0.5 * 0.00694$
SCREENED PORCH (Non-living area)	109	$-(545.5 + 545.5) * (436.5 - 548.6) + (545.5 + 405.3) * (548.6 - 548.6) + (405.3 + 405.3) * (548.6 - 436.5) + (405.3 + 545.5) * (436.5 - 436.5)) * 0.5 * 0.00694$
PORCH	114	$-((773.8 + 773.8) * (927.2 - 982.6) + (773.8 + 568.9) * (982.6 - 982.6) + (568.9 + 568.9) * (982.6 -$

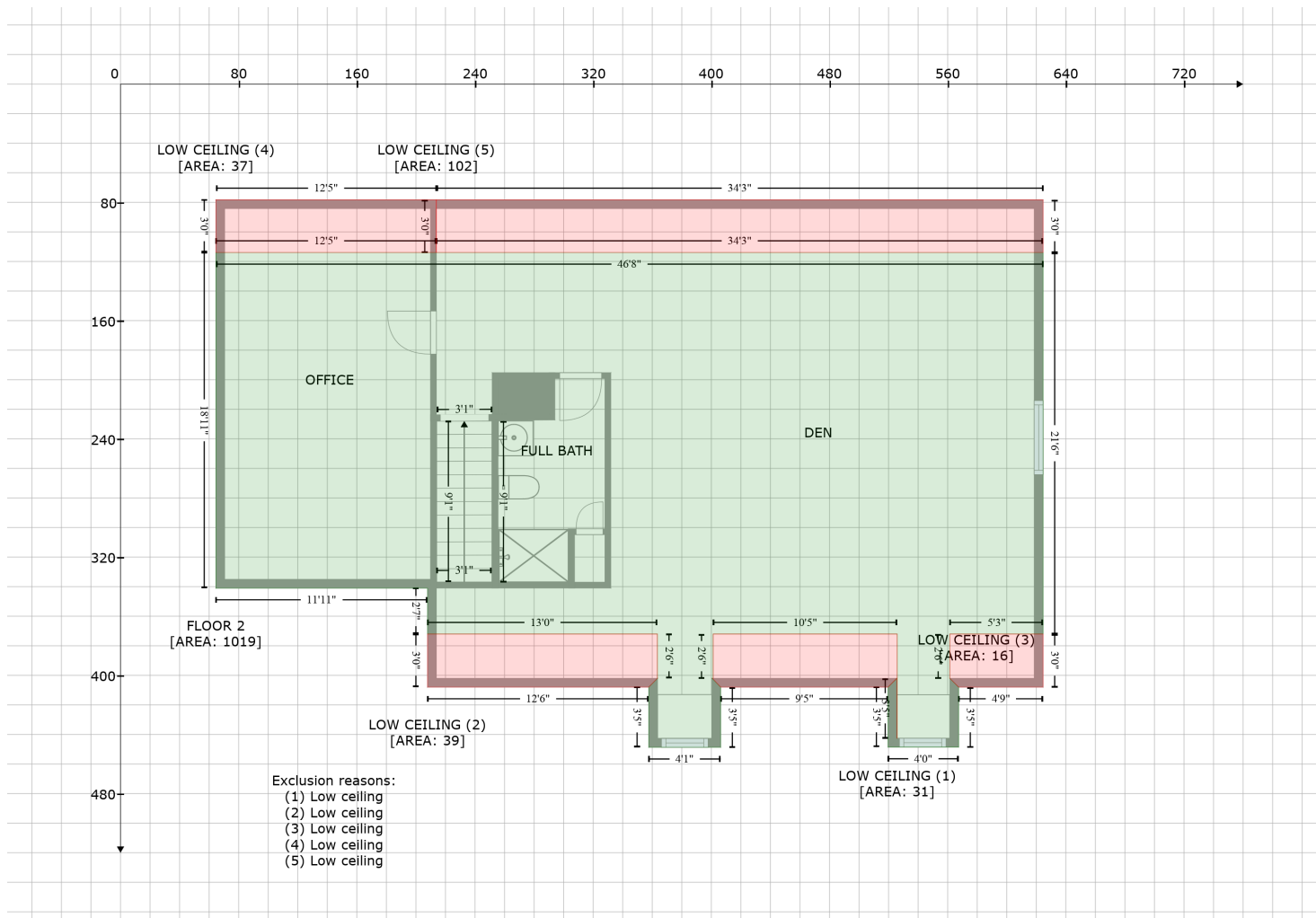
36 Rains Drive, Wendell, Johnston County, North Carolina, United States, 27591

Gross Living Area: 2609 sq. ft

Space	Area (sq. ft)	Calculation <small>Coordinate Polygon Area Algorithm using inches</small>
(Non-living area)		$1024.2 + (568.9 + 517) * (1024.2 - 1024) + (517 + 517) * (1024 - 927.2) + (517 + 773.8) * (927.2 - 927.2) * 0.5 * 0.00694$
DECK (Non-living area)	185	$-((547.5 + 547.4) * (139.5 - 430.5) + (547.4 + 399.3) * (430.5 - 430.5) + (399.3 + 399.2) * (430.5 - 337.5) + (399.2 + 442.3) * (337.5 - 317.8) + (442.3 + 479.1) * (317.8 - 281.3) + (479.1 + 499) * (281.3 - 241.2) + (499 + 504.7) * (241.2 - 190.2) + (504.7 + 492.6) * (190.2 - 143) + (492.6 + 492.6) * (143 - 142.8) + (492.6 + 490.2) * (142.8 - 139.5) + (490.2 + 547.5) * (139.5 - 139.5)) * 0.5 * 0.00694$
GARAGE (Non-living area)	584	$-((366.9 + 366.9) * (548.6 - 840.2) + (366.9 + 78.3) * (840.2 - 840.2) + (78.3 + 78.3) * (840.2 - 548.6) + (78.3 + 366.9) * (548.6 - 548.6)) * 0.5 * 0.00694$

36 Rains Drive, Wendell, Johnston County, North Carolina, United States, 27591

Gross Living Area: 2609 sq. ft



Space	Area (sq. ft)	Calculation
FLOOR 2 (Living area)	1019	Coordinate Polygon Area Algorithm using inches $-((624.6 + 624.6) * (113.9 - 372) + (624.6 + 561.4) * (372 - 372) + (561.4 + 561.4) * (372 - 402) + (561.4 + 567.4) * (402 - 408) + (567.4 + 567.4) * (408 - 448.6) + (567.4 + 519.6) * (448.6 - 448.6) + (519.6 + 519.6) * (448.6 - 408) + (519.6 + 525.6) * (408 - 402) + (525.6 + 525.6) * (402 - 442.6) + (525.6 + 525.8) * (442.6 - 442.6) + (525.8 + 525.8) * (442.6 - 372) + (525.8 + 401.2) * (372 - 372) + (401.2 + 401.2) * (372 - 402) + (401.2 + 400.3) * (402 - 402) + (400.3 + 406.3) * (402 - 408) + (406.3 + 406.3) * (408 - 448.7) + (406.3 + 357.6) * (448.7 - 448.7) + (357.6 + 357.6) * (448.7 - 408) + (357.6 + 363.6) * (408 - 402) + (363.6 + 363.5) * (402 - 402) + (363.5 + 363.5) * (402 - 372) + (363.5 + 207.9) * (372 - 372) + (207.9 + 207.9) * (372 - 341) + (207.9 + 64.6) * (341 - 341) + (64.6 + 64.6) * (341 - 113.9) + (64.6 + 624.6) * (113.9 - 113.9)) * 0.5 * 0.00694$
LOW CEILING (Non-living area)	31	$-((525.8 + 525.8) * (372 - 442.6) + (525.8 + 525.6) * (442.6 - 442.6) + (525.6 + 525.6) * (442.6 - 402) + (525.6 + 519.6) * (402 - 408) + (519.6 + 406.3) * (408 - 408) + (406.3 + 400.8) * (408 - 402) + (400.8 + 401.2) * (402 - 402) + (401.2 + 401.2) * (402 - 372) + (401.2 + 525.8) * (372 - 372)) * 0.5 * 0.00694$
LOW CEILING (Non-living area)	39	$-((363.5 + 363.5) * (372 - 402) + (363.5 + 363.5) * (402 - 402) + (363.5 + 357.6) * (402 - 408) + (357.6 + 207.9) * (408 - 408) + (207.9 + 207.9) * (408 - 372) + (207.9 + 363.5) * (372 - 372)) * 0.5 * 0.00694$
LOW CEILING (Non-living area)	16	$-((624.6 + 624.6) * (372 - 408) + (624.6 + 567.4) * (408 - 408) + (567.4 + 561.4) * (408 - 402) + (561.4 + 561.4) * (402 - 372) + (561.4 + 624.6) * (372 - 372)) * 0.5 * 0.00694$

36 Rains Drive, Wendell, Johnston County, North Carolina, United States, 27591

Gross Living Area: 2609 sq. ft

Space	Area (sq. ft)	Calculation <small>Coordinate Polygon Area Algorithm using inches</small>
LOW CEILING (Non-living area)	37	$-((213.9 + 213.9) * (78.3 - 113.9) + (213.9 + 64.6) * (113.9 - 113.9) + (64.6 + 64.6) * (113.9 - 78.3) + (64.6 + 213.9) * (78.3 - 78.3)) * 0.5 * 0.00694$
LOW CEILING (Non-living area)	102	$-((624.6 + 624.6) * (78.3 - 113.9) + (624.6 + 213.9) * (113.9 - 113.9) + (213.9 + 213.9) * (113.9 - 78.3) + (213.9 + 624.6) * (78.3 - 78.3)) * 0.5 * 0.00694$