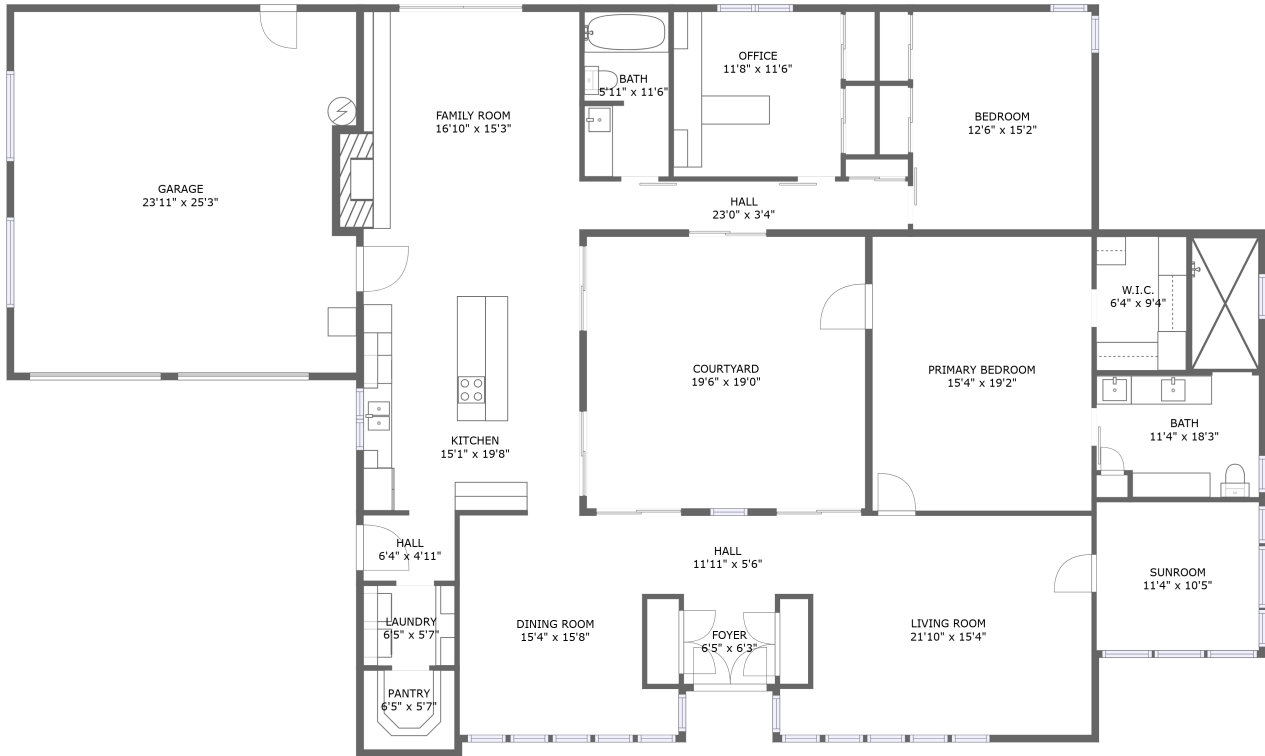


21 Serenity Drive, Uxbridge, Worcester County, Massachusetts, United States, 01569




FLOOR 1

Property Summary


 **1** garages

 **2** bedrooms

 **2** bathrooms

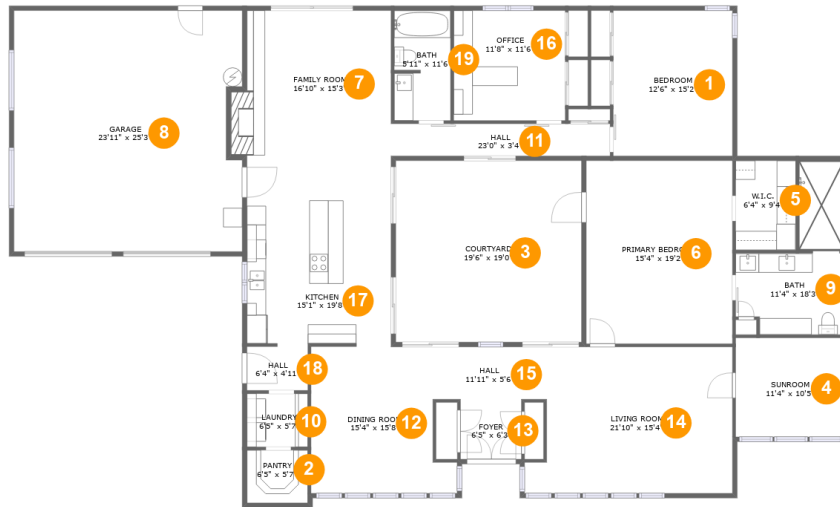
 **0** half baths

 **1** floors

 **2,649** Gross Living Area sqft

 **3,287** total sqft

21 Serenity Drive, Uxbridge, Worcester County, Massachusetts, United States, 01569



Room Dimensions

Floor 1

Total sqft: 3287

Living area: 2649

#	Room name	Dimensions	Area (sqft)	Counted as Living Area
1	Bedroom	12'6" x 15'2"	190 sq. ft	Yes
2	Pantry	6'5" x 5'7"	36 sq. ft	Yes
3	Courtyard	19'6" x 19'0"	370 sq. ft	No
4	Sunroom	11'4" x 10'5"	118 sq. ft	Yes
5	W.i.c.	6'4" x 9'4"	59 sq. ft	Yes
6	Primary Bedroom	15'4" x 19'2"	294 sq. ft	Yes
7	Family Room	16'10" x 15'3"	242 sq. ft	Yes
8	Garage	23'11" x 25'3"	592 sq. ft	No
9	Bath	11'4" x 18'3"	137 sq. ft	Yes
10	Laundry	6'5" x 5'7"	36 sq. ft	Yes
11	Hall	23'0" x 3'4"	77 sq. ft	Yes

Scan captured on Fri, 19 Jul 2024 19:52:42 GMT

Information is calculated by CubiCasa technology; deemed highly reliable but not guaranteed.

**21 Serenity Drive, Uxbridge, Worcester County,
Massachusetts, United States, 01569**

#	Room name	Dimensions	Area (sqft)	Counted as Living Area
12	Dining Room	15'4" x 15'8"	206 sq. ft	Yes
13	Foyer	6'5" x 6'3"	40 sq. ft	Yes
14	Living Room	21'10" x 15'4"	306 sq. ft	Yes
15	Hall	11'11" x 5'6"	66 sq. ft	Yes
16	Office	11'8" x 11'6"	135 sq. ft	Yes
17	Kitchen	15'1" x 19'8"	297 sq. ft	Yes
18	Hall	6'4" x 4'11"	30 sq. ft	Yes
19	Bath	5'11" x 11'6"	67 sq. ft	Yes

21 Serenity Drive, Uxbridge, Worcester County, Massachusetts, United States, 01569

1 Floor 1 - Bedroom



Dimensions: 12'6" x 15'2"
Area: 190 sq. ft
Counted as Living Area:
Yes

Heated: Yes
Finished: Yes
Enclosed: Yes
Contiguous:
Yes
Permitted: Yes
Wet Space: No
Addition: No
Conversion: No

2 Floor 1 - Pantry

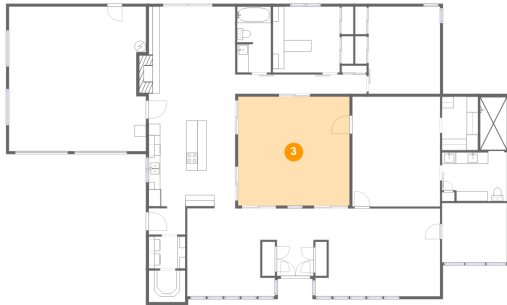


Dimensions: 6'5" x 5'7"
Area: 36 sq. ft
Counted as Living Area:
Yes

Heated: Yes
Finished: Yes
Enclosed: Yes
Contiguous:
Yes
Permitted: Yes
Wet Space: No
Addition: No
Conversion: No

21 Serenity Drive, Uxbridge, Worcester County, Massachusetts, United States, 01569

3 Floor 1 - Courtyard



Dimensions: 19'6" x 19'0"
Area: 370 sq. ft
Counted as Living Area: No

Heated: No
Finished: No
Enclosed: No
Contiguous: Yes
Permitted: No
Wet Space: No
Addition: No
Conversion: No

4 Floor 1 - Sunroom



Dimensions: 11'4" x 10'5"
Area: 118 sq. ft
Counted as Living Area:
Yes

Heated: Yes
Finished: Yes
Enclosed: Yes
Contiguous:
Yes
Permitted: Yes
Wet Space: No
Addition: No
Conversion: No

5 Floor 1 - W.i.c.

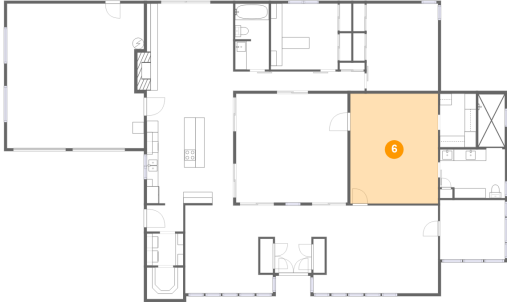


Dimensions: 6'4" x 9'4"
Area: 59 sq. ft
Counted as Living Area:
Yes

Heated: Yes
Finished: Yes
Enclosed: Yes
Contiguous:
Yes
Permitted: Yes
Wet Space: No
Addition: No
Conversion: No

21 Serenity Drive, Uxbridge, Worcester County, Massachusetts, United States, 01569

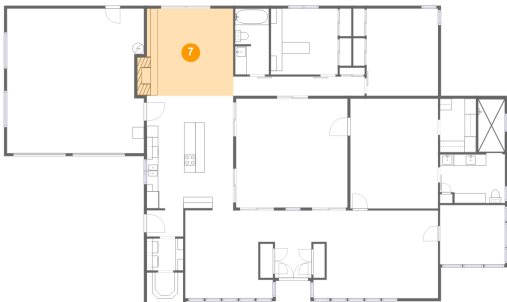
6 Floor 1 - Primary Bedroom



Dimensions: 15'4" x 19'2"
Area: 294 sq. ft
Counted as Living Area:
Yes

Heated: Yes
Finished: Yes
Enclosed: Yes
Contiguous:
Yes
Permitted: Yes
Wet Space: No
Addition: No
Conversion: No

7 Floor 1 - Family Room



Dimensions: 16'10" x 15'3"
Area: 242 sq. ft
Counted as Living Area:
Yes

Heated: Yes
Finished: Yes
Enclosed: Yes
Contiguous:
Yes
Permitted: Yes
Wet Space: No
Addition: No
Conversion: No

8 Floor 1 - Garage



Dimensions: 23'11" x 25'3"
Area: 592 sq. ft
Counted as Living Area: No

Heated: No
Finished: No
Enclosed: Yes
Contiguous: Yes
Permitted: Yes
Wet Space: No
Addition: No
Conversion: No

21 Serenity Drive, Uxbridge, Worcester County, Massachusetts, United States, 01569

9 Floor 1 - Bath



Dimensions: 11'4" x 18'3"
Area: 137 sq. ft
Counted as Living Area:
Yes

Heated: Yes
Finished: Yes
Enclosed: Yes
Contiguous:
Yes
Permitted: Yes
Wet Space: Yes
Addition: No
Conversion: No

10 Floor 1 - Laundry



Dimensions: 6'5" x 5'7"
Area: 36 sq. ft
Counted as Living Area:
Yes

Heated: Yes
Finished: Yes
Enclosed: Yes
Contiguous:
Yes
Permitted: Yes
Wet Space: No
Addition: No
Conversion: No

11 Floor 1 - Hall

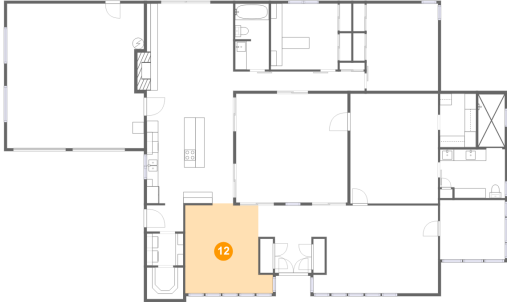


Dimensions: 23'0" x 3'4"
Area: 77 sq. ft
Counted as Living Area:
Yes

Heated: Yes
Finished: Yes
Enclosed: Yes
Contiguous:
Yes
Permitted: Yes
Wet Space: No
Addition: No
Conversion: No

21 Serenity Drive, Uxbridge, Worcester County, Massachusetts, United States, 01569

12 Floor 1 - Dining Room



Dimensions: 15'4" x 15'8"
Area: 206 sq. ft
Counted as Living Area:
Yes

Heated: Yes
Finished: Yes
Enclosed: Yes
Contiguous:
Yes
Permitted: Yes
Wet Space: No
Addition: No
Conversion: No

13 Floor 1 - Foyer



Dimensions: 6'5" x 6'3"
Area: 40 sq. ft
Counted as Living Area:
Yes

Heated: Yes
Finished: Yes
Enclosed: Yes
Contiguous:
Yes
Permitted: Yes
Wet Space: No
Addition: No
Conversion: No

14 Floor 1 - Living Room



Dimensions: 21'10" x 15'4"
Area: 306 sq. ft
Counted as Living Area:
Yes

Heated: Yes
Finished: Yes
Enclosed: Yes
Contiguous:
Yes
Permitted: Yes
Wet Space: No
Addition: No
Conversion: No

21 Serenity Drive, Uxbridge, Worcester County, Massachusetts, United States, 01569

15 Floor 1 - Hall



Dimensions: 11'11" x 5'6"
Area: 66 sq. ft
Counted as Living Area:
Yes

Heated: Yes
Finished: Yes
Enclosed: Yes
Contiguous:
Yes
Permitted: Yes
Wet Space: No
Addition: No
Conversion: No

16 Floor 1 - Office



Dimensions: 11'8" x 11'6"
Area: 135 sq. ft
Counted as Living Area:
Yes

Heated: Yes
Finished: Yes
Enclosed: Yes
Contiguous:
Yes
Permitted: Yes
Wet Space: No
Addition: No
Conversion: No

17 Floor 1 - Kitchen



Dimensions: 15'1" x 19'8"
Area: 297 sq. ft
Counted as Living Area:
Yes

Heated: Yes
Finished: Yes
Enclosed: Yes
Contiguous:
Yes
Permitted: Yes
Wet Space: No
Addition: No
Conversion: No

21 Serenity Drive, Uxbridge, Worcester County, Massachusetts, United States, 01569

18 Floor 1 - Hall



Dimensions: 6'4" x 4'11"
Area: 30 sq. ft
Counted as Living Area:
Yes

Heated: Yes
Finished: Yes
Enclosed: Yes
Contiguous:
Yes
Permitted: Yes
Wet Space: No
Addition: No
Conversion: No

19 Floor 1 - Bath



Dimensions: 5'11" x 11'6"
Area: 67 sq. ft
Counted as Living Area:
Yes

Heated: Yes
Finished: Yes
Enclosed: Yes
Contiguous:
Yes
Permitted: Yes
Wet Space: Yes
Addition: No
Conversion: No