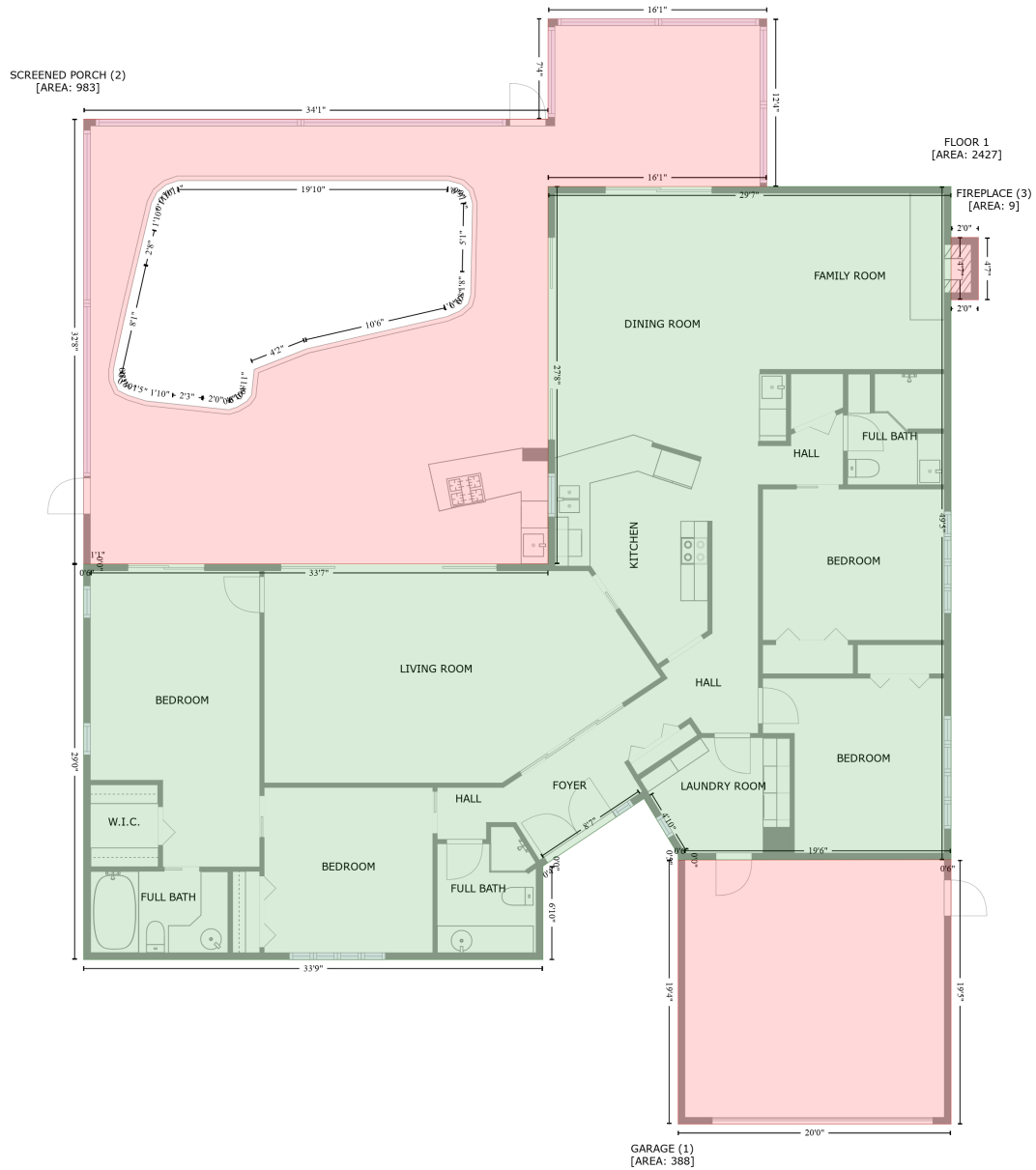


216 Palm Island Southwest, Clearwater Beach, Pinellas County, Florida, United States, 33767

Gross Living Area: 2427 sq. ft



Space

Area (sq. ft)

Calculation Coordinate Polygon Area Algorithm using inches

FLOOR 1
(Living area)

2427

$$\begin{aligned}
 & -((833.6 + 833.6) * (166.4 - 759.4) + (833.6 + 599.2) * (759.4 - 759.4) + (599.2 + 599.2) * (759.4 - \\
 & 759.8) + (599.2 + 593.2) * (759.8 - 759.8) + (593.2 + 593.2) * (759.8 - 754.9) + (593.2 + 563.1) * \\
 & (754.9 - 705.5) + (563.1 + 477.6) * (705.5 - 762.6) + (477.6 + 477.6) * (762.6 - 762.7) + (477.6 + \\
 & 474.1) * (762.7 - 765.1) + (474.1 + 474.1) * (765.1 - 847.3) + (474.1 + 69.6) * (847.3 - 847.3) + \\
 & (69.6 + 69.6) * (847.3 - 499.1) + (69.6 + 75.6) * (499.1 - 499.1) + (75.6 + 88.6) * (499.1 - 498.9) + \\
 & (88.6 + 478.6) * (498.9 - 498.9) + (478.6 + 478.6) * (498.9 - 166.4) + (478.6 + 833.6) * (166.4 - \\
 & 166.4)) * 0.5 * 0.00694
 \end{aligned}$$

216 Palm Island Southwest, Clearwater Beach, Pinellas County, Florida, United States, 33767

Gross Living Area: 2427 sq. ft

Space	Area (sq. ft)	Calculation <small>Coordinate Polygon Area Algorithm using inches</small>
GARAGE (Non-living area)	388	$-\left((833.6 + 833.6) * (759.4 - 992.2) + (833.6 + 593.2) * (992.2 - 992.2) + (593.2 + 593.2) * (992.2 - 759.8) + (593.2 + 599.2) * (759.8 - 759.8) + (599.2 + 827.6) * (759.8 - 759.4) + (827.6 + 833.6) * (759.4 - 759.4)\right) * 0.5 * 0.00694$
SCREENED PORCH (Non-living area)	983	$-\left((671.3 + 671.3) * (18.7 - 166.4) + (671.3 + 478.6) * (166.4 - 166.4) + (478.6 + 478.6) * (166.4 - 498.9) + (478.6 + 88.7) * (498.9 - 498.9) + (88.7 + 75.6) * (498.9 - 499.1) + (75.6 + 69.6) * (499.1 - 499.1) + (69.6 + 69.6) * (499.1 - 107.2) + (69.6 + 478.6) * (107.2 - 107.2) + (478.6 + 478.6) * (107.2 - 18.7) + (478.6 + 671.3) * (18.7 - 18.7)\right) * 0.5 * 0.00694 - \left((390.8 + 152.6) * (161.3 - 161.3) + (152.6 + 142.2) * (161.3 - 165) + (142.2 + 134.3) * (165 - 171.5) + (134.3 + 129.4) * (171.5 - 180.9) + (129.4 + 124.4) * (180.9 - 202.7) + (124.4 + 116.9) * (202.7 - 233.9) + (116.9 + 95.7) * (233.9 - 329.1) + (95.7 + 96.1) * (329.1 - 337.2) + (96.1 + 100) * (337.2 - 346.1) + (100 + 108.8) * (346.1 - 350.5) + (108.8 + 125.1) * (350.5 - 355.4) + (125.1 + 146.8) * (355.4 - 358) + (146.8 + 173.3) * (358 - 360.5) + (173.3 + 197.4) * (360.5 - 363.1) + (197.4 + 205.1) * (363.1 - 360.7) + (205.1 + 213.6) * (360.7 - 355.5) + (213.6 + 217.4) * (355.5 - 350.4) + (217.4 + 219.9) * (350.4 - 327.6) + (219.9 + 266.6) * (327.6 - 309.3) + (266.6 + 389.5) * (309.3 - 281.1) + (389.5 + 401) * (281.1 - 276.2) + (401 + 408.3) * (276.2 - 269.8) + (408.3 + 410.5) * (269.8 - 261.8) + (410.5 + 411) * (261.8 - 242.2) + (411 + 412.2) * (242.2 - 181.4) + (412.2 + 409.1) * (181.4 - 170.6) + (409.1 + 402.4) * (170.6 - 164.4) + (402.4 + 390.8) * (164.4 - 161.3)\right) * 0.5 * 0.00694$
FIREPLACE (Non-living area)	9	$-\left((857.7 + 857.7) * (211.3 - 266.2) + (857.7 + 833.6) * (266.2 - 266.2) + (833.6 + 833.6) * (266.2 - 211.3) + (833.6 + 857.7) * (211.3 - 211.3)\right) * 0.5 * 0.00694$