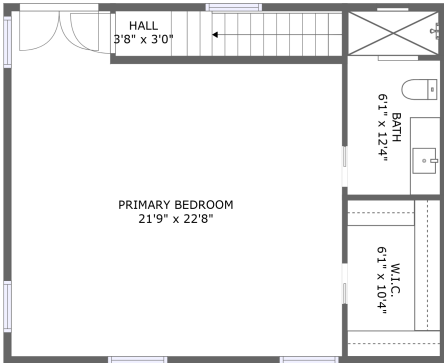
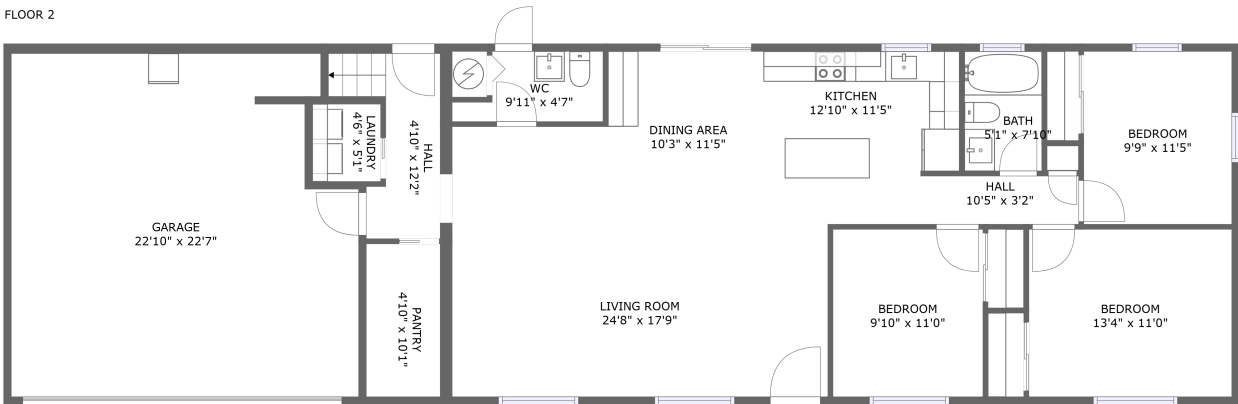


# 8390 64th Street North, Pinellas Park, Pinellas County, Florida, United States, 33781




FLOOR 2



FLOOR 1

## Property summary

 **1** Garages

 **4** Bedrooms

 **2** Bathrooms

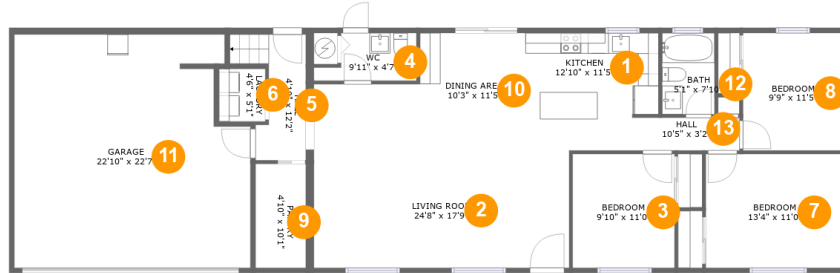
 **1** Half baths

 **2** Floors

 **2,100** Gross living area sqft

 **2,624** Total sqft

# 8390 64th Street North, Pinellas Park, Pinellas County, Florida, United States, 33781



## Room dimensions

Floor 1

Total sqft: 1930 Living area: 1406

#		Dimensions	sqft	Counted as living area
1	Kitchen	12'10" x 11'5"	137 sq. ft	Yes
2	Living Room	24'8" x 17'9"	347 sq. ft	Yes
3	Bedroom	9'10" x 11'0"	109 sq. ft	Yes
4	Bath	9'11" x 4'7"	37 sq. ft	Yes
5	Hall	4'10" x 12'2"	59 sq. ft	Yes
6	Utility	4'6" x 5'1"	23 sq. ft	Yes
7	Bedroom	13'4" x 11'0"	147 sq. ft	Yes
8	Bedroom	9'9" x 11'5"	111 sq. ft	Yes
9	Pantry	4'10" x 10'1"	49 sq. ft	Yes
10	Dining Room	10'3" x 11'5"	117 sq. ft	Yes
11	Garage	22'10" x 22'7"	486 sq. ft	No

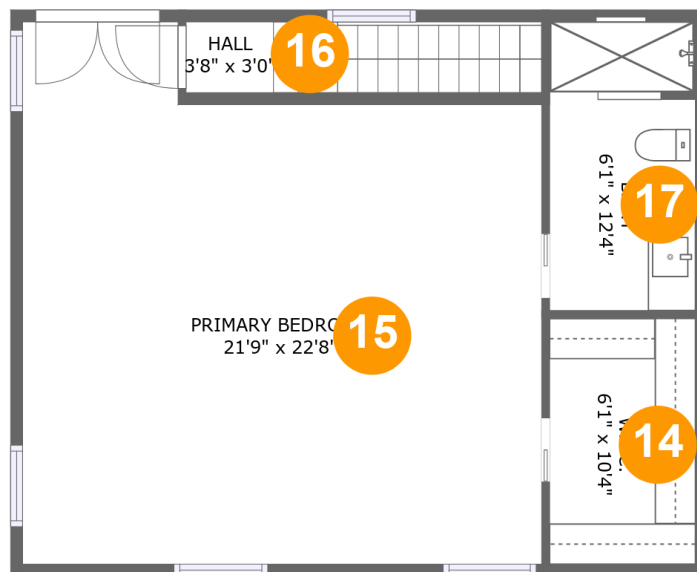
Scan captured on Tue, 10 Dec 2024 02:34:49 GMT

Information is calculated by Cubicasa technology deemed highly reliable but not guaranteed.

# 8390 64th Street North, Pinellas Park, Pinellas County, Florida, United States, 33781

#		Dimensions	sqft	Counted as living area
12	Bath	5'1" x 7'10"	40 sq. ft	Yes
13	Hall	10'5" x 3'2"	33 sq. ft	Yes

# 8390 64th Street North, Pinellas Park, Pinellas County, Florida, United States, 33781



## Room dimensions

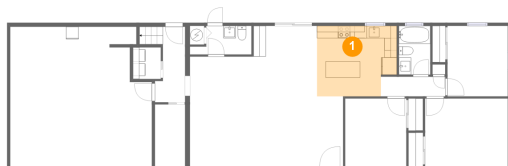
Floor 2

Total sqft: 694 Living area: 694

#		Dimensions	sqft	Counted as living area
14	Cl	6'1" x 10'4"	63 sq. ft	Yes
15	Bedroom	21'9" x 22'8"	442 sq. ft	Yes
16	Hall	3'8" x 3'0"	44 sq. ft	Yes
17	Bath	6'1" x 12'4"	74 sq. ft	Yes

# 8390 64th Street North, Pinellas Park, Pinellas County, Florida, United States, 33781

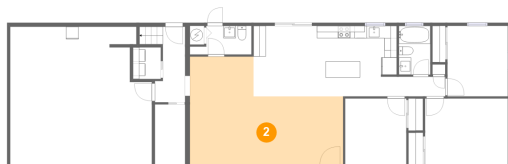
## 1 Floor 1 - Kitchen



Dimensions: 12'10" x 11'5"  
Area: 137 sq. ft  
Counted as living area: Yes

Heated: Yes  
Finished: Yes  
Enclosed: Yes  
Contiguous: Yes  
Permitted: Yes  
Wet space: No  
Addition: No  
Conversion: No

## 2 Floor 1 - Living Room



Dimensions: 24'8" x 17'9"  
Area: 347 sq. ft  
Counted as living area: Yes

Heated: Yes  
Finished: Yes  
Enclosed: Yes  
Contiguous: Yes  
Permitted: Yes  
Wet space: No  
Addition: No  
Conversion: No

# 8390 64th Street North, Pinellas Park, Pinellas County, Florida, United States, 33781

## 3 Floor 1 - Bedroom



Dimensions: 9'10" x 11'0"  
Area: 109 sq. ft  
Counted as living area: Yes

Heated: Yes  
Finished: Yes  
Enclosed: Yes  
Contiguous: Yes  
Permitted: Yes  
Wet space: No  
Addition: No  
Conversion: No

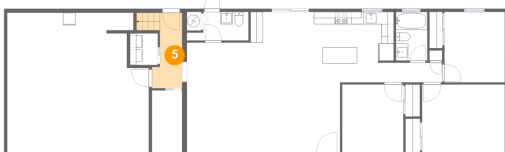
## 4 Floor 1 - Bath



Dimensions: 9'11" x 4'7"  
Area: 37 sq. ft  
Counted as living area: Yes

Heated: Yes  
Finished: Yes  
Enclosed: Yes  
Contiguous: Yes  
Permitted: Yes  
Wet space: Yes  
Addition: No  
Conversion: No

## 5 Floor 1 - Hall



Dimensions: 4'10" x 12'2"  
Area: 59 sq. ft  
Counted as living area: Yes

Heated: Yes  
Finished: Yes  
Enclosed: Yes  
Contiguous: Yes  
Permitted: Yes  
Wet space: No  
Addition: No  
Conversion: No

# 8390 64th Street North, Pinellas Park, Pinellas County, Florida, United States, 33781

## 6 Floor 1 - Utility



Dimensions: 4'6" x 5'1"  
Area: 23 sq. ft  
Counted as living area: Yes

Heated: Yes  
Finished: Yes  
Enclosed: Yes  
Contiguous: Yes  
Permitted: Yes  
Wet space: No  
Addition: No  
Conversion: No

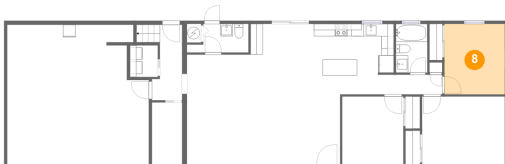
## 7 Floor 1 - Bedroom



Dimensions: 13'4" x 11'0"  
Area: 147 sq. ft  
Counted as living area: Yes

Heated: Yes  
Finished: Yes  
Enclosed: Yes  
Contiguous: Yes  
Permitted: Yes  
Wet space: No  
Addition: No  
Conversion: No

## 8 Floor 1 - Bedroom



Dimensions: 9'9" x 11'5"  
Area: 111 sq. ft  
Counted as living area: Yes

Heated: Yes  
Finished: Yes  
Enclosed: Yes  
Contiguous: Yes  
Permitted: Yes  
Wet space: No  
Addition: No  
Conversion: No

# 8390 64th Street North, Pinellas Park, Pinellas County, Florida, United States, 33781

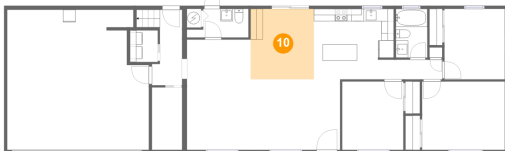
## 9 Floor 1 - Pantry



Dimensions: 4'10" x 10'1"  
Area: 49 sq. ft  
Counted as living area: Yes

Heated: Yes  
Finished: Yes  
Enclosed: Yes  
Contiguous: Yes  
Permitted: Yes  
Wet space: No  
Addition: No  
Conversion: No

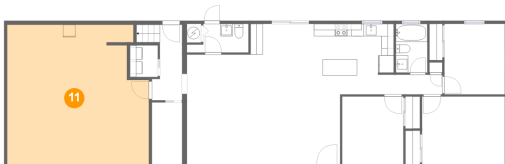
## 10 Floor 1 - Dining Room



Dimensions: 10'3" x 11'5"  
Area: 117 sq. ft  
Counted as living area: Yes

Heated: Yes  
Finished: Yes  
Enclosed: Yes  
Contiguous: Yes  
Permitted: Yes  
Wet space: No  
Addition: No  
Conversion: No

## 11 Floor 1 - Garage



Dimensions: 22'10" x 22'7"  
Area: 486 sq. ft  
Counted as living area: No

Heated: No  
Finished: No  
Enclosed: Yes  
Contiguous: Yes  
Permitted: Yes  
Wet space: No  
Addition: No  
Conversion: No



# 8390 64th Street North, Pinellas Park, Pinellas County, Florida, United States, 33781

## 12 Floor 1 - Bath



Dimensions: 5'1" x 7'10"  
Area: 40 sq. ft  
Counted as living area: Yes

Heated: Yes  
Finished: Yes  
Enclosed: Yes  
Contiguous: Yes  
Permitted: Yes  
Wet space: Yes  
Addition: No  
Conversion: No

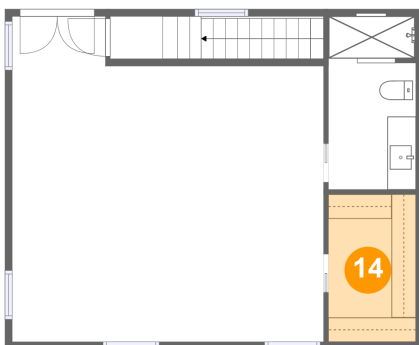
## 13 Floor 1 - Hall



Dimensions: 10'5" x 3'2"  
Area: 33 sq. ft  
Counted as living area: Yes

Heated: Yes  
Finished: Yes  
Enclosed: Yes  
Contiguous: Yes  
Permitted: Yes  
Wet space: No  
Addition: No  
Conversion: No

## 14 Floor 2 - Cl

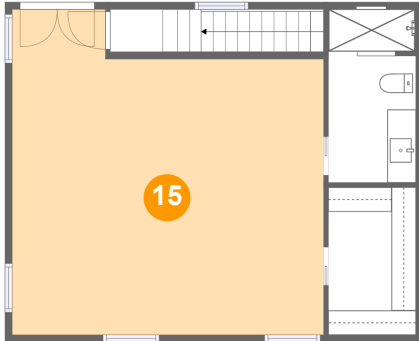


Dimensions: 6'1" x 10'4"  
Area: 63 sq. ft  
Counted as living area: Yes

Heated: Yes  
Finished: Yes  
Enclosed: Yes  
Contiguous: Yes  
Permitted: Yes  
Wet space: No  
Addition: No  
Conversion: No

**8390 64th Street North, Pinellas Park, Pinellas  
County, Florida, United States, 33781**

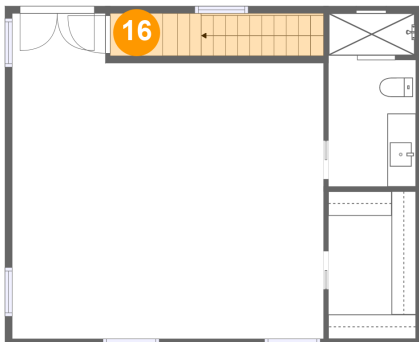
**15 Floor 2 - Bedroom**



**Dimensions:** 21'9" x 22'8"  
**Area:** 442 sq. ft  
**Counted as living area:** Yes

**Heated:** Yes  
**Finished:** Yes  
**Enclosed:** Yes  
**Contiguous:** Yes  
**Permitted:** Yes  
**Wet space:** No  
**Addition:** No  
**Conversion:** No

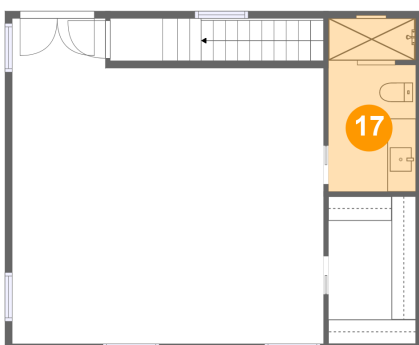
**16 Floor 2 - Hall**



**Dimensions:** 3'8" x 3'0"  
**Area:** 44 sq. ft  
**Counted as living area:** Yes

**Heated:** Yes  
**Finished:** Yes  
**Enclosed:** Yes  
**Contiguous:** Yes  
**Permitted:** Yes  
**Wet space:** No  
**Addition:** No  
**Conversion:** No

**17 Floor 2 - Bath**



**Dimensions:** 6'1" x 12'4"  
**Area:** 74 sq. ft  
**Counted as living area:** Yes

**Heated:** Yes  
**Finished:** Yes  
**Enclosed:** Yes  
**Contiguous:** Yes  
**Permitted:** Yes  
**Wet space:** Yes  
**Addition:** No  
**Conversion:** No