


Home report


1963 Edgewater Drive, Edgewater Drive, Clearwater, Pinellas County, Florida, United States, 33755




Property summary




1
Garages



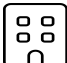
2
Bedrooms




3
Bathrooms




1
Half baths



2
Floors



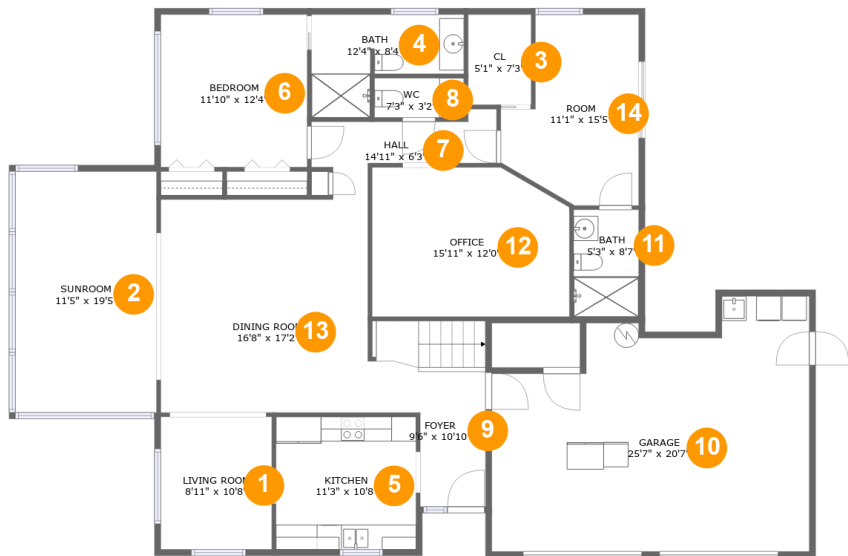
2,304
Gross living area sqft



2,816
Total sqft

Home report

1963 Edgewater Drive, Edgewater Drive, Clearwater, Pinellas
County, Florida, United States, 33755



Room dimensions

Floor 1 Total sqft: 2242 Living area: 1730

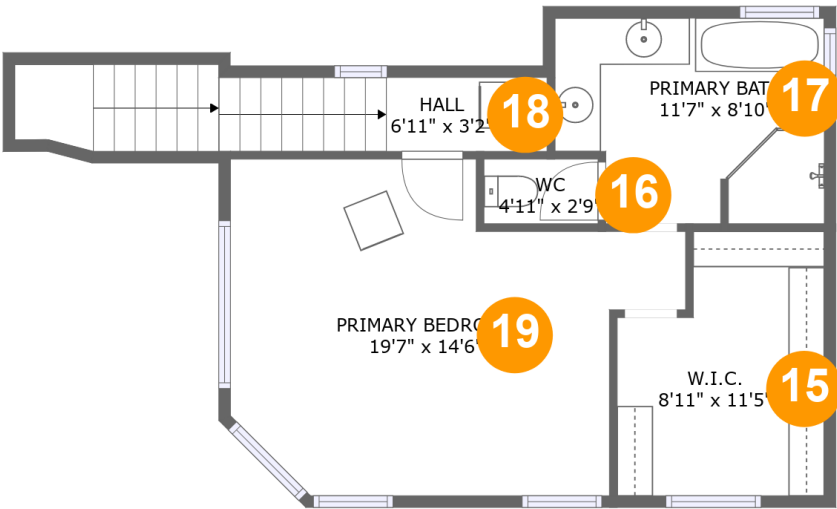
| # | | Dimensions | sqft | Counted as living area |
|----|-------------|----------------|------------|------------------------|
| 1 | Living Room | 8'11" x 10'8" | 96 sq. ft | Yes |
| 2 | Sunroom | 11'5" x 19'5" | 221 sq. ft | Yes |
| 3 | Cl | 5'1" x 7'3" | 37 sq. ft | Yes |
| 4 | Bath | 12'4" x 8'4" | 75 sq. ft | Yes |
| 5 | Kitchen | 11'3" x 10'8" | 121 sq. ft | Yes |
| 6 | Bedroom | 11'10" x 12'4" | 145 sq. ft | Yes |
| 7 | Hall | 14'11" x 6'3" | 61 sq. ft | Yes |
| 8 | WC | 7'3" x 3'2" | 23 sq. ft | Yes |
| 9 | Foyer | 9'6" x 10'10" | 109 sq. ft | Yes |
| 10 | Garage | 25'7" x 20'7" | 447 sq. ft | No |
| 11 | Bath | 5'3" x 8'7" | 45 sq. ft | Yes |

Home report

1963 Edgewater Drive, Edgewater Drive, Clearwater, Pinellas
County, Florida, United States, 33755

| # | | Dimensions | sqft | Counted as living area |
|----|-------------|----------------|------------|------------------------|
| 12 | Office | 15'11" x 12'0" | 182 sq. ft | Yes |
| 13 | Dining Room | 16'8" x 17'2" | 286 sq. ft | Yes |
| 14 | Room | 11'1" x 15'5" | 140 sq. ft | Yes |

1963 Edgewater Drive, Edgewater Drive, Clearwater, Pinellas
County, Florida, United States, 33755



Room dimensions

Floor 2 Total sqft: 574 Living area: 574

| # | | Dimensions | sqft | Counted as living area |
|----|-----------------|---------------|------------|------------------------|
| 15 | W.I.C. | 8'11" x 11'5" | 89 sq. ft | Yes |
| 16 | WC | 4'11" x 2'9" | 14 sq. ft | Yes |
| 17 | Primary Bath | 11'7" x 8'10" | 95 sq. ft | Yes |
| 18 | Hall | 6'11" x 3'2" | 77 sq. ft | Yes |
| 19 | Primary Bedroom | 19'7" x 14'6" | 224 sq. ft | Yes |

1963 Edgewater Drive, Edgewater Drive, Clearwater, Pinellas
County, Florida, United States, 33755

1 Floor 1 - Living Room



Dimensions: 8'11" x 10'8"
Area: 96 sq. ft
Counted as living area: Yes

Heated: Yes
Finished: Yes
Enclosed: Yes
Contiguous: Yes
Permitted: Yes
Wet space: No
Addition: No
Conversion: No

2 Floor 1 - Sunroom



Dimensions: 11'5" x 19'5"
Area: 221 sq. ft
Counted as living area: Yes

Heated: Yes
Finished: Yes
Enclosed: Yes
Contiguous: Yes
Permitted: Yes
Wet space: No
Addition: No
Conversion: No

1963 Edgewater Drive, Edgewater Drive, Clearwater, Pinellas
County, Florida, United States, 33755

3 Floor 1 - Cl



Dimensions: 5'1" x 7'3"
Area: 37 sq. ft
Counted as living area: Yes

Heated: Yes
Finished: Yes
Enclosed: Yes
Contiguous: Yes
Permitted: Yes
Wet space: No
Addition: No
Conversion: No

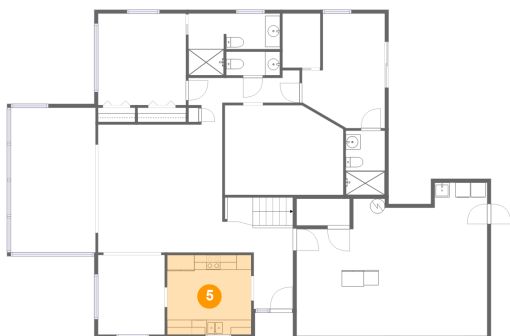
4 Floor 1 - Bath



Dimensions: 12'4" x 8'4"
Area: 75 sq. ft
Counted as living area: Yes

Heated: Yes
Finished: Yes
Enclosed: Yes
Contiguous: Yes
Permitted: Yes
Wet space: Yes
Addition: No
Conversion: No

5 Floor 1 - Kitchen



Dimensions: 11'3" x 10'8"
Area: 121 sq. ft
Counted as living area: Yes

Heated: Yes
Finished: Yes
Enclosed: Yes
Contiguous: Yes
Permitted: Yes
Wet space: No
Addition: No
Conversion: No

1963 Edgewater Drive, Edgewater Drive, Clearwater, Pinellas
County, Florida, United States, 33755

6 Floor 1 - Bedroom



Dimensions: 11'10" x 12'4"
Area: 145 sq. ft
Counted as living area: Yes

Heated: Yes
Finished: Yes
Enclosed: Yes
Contiguous: Yes
Permitted: Yes
Wet space: No
Addition: No
Conversion: No

7 Floor 1 - Hall



Dimensions: 14'11" x 6'3"
Area: 61 sq. ft
Counted as living area: Yes

Heated: Yes
Finished: Yes
Enclosed: Yes
Contiguous: Yes
Permitted: Yes
Wet space: No
Addition: No
Conversion: No

8 Floor 1 - WC



Dimensions: 7'3" x 3'2"
Area: 23 sq. ft
Counted as living area: Yes

Heated: Yes
Finished: Yes
Enclosed: Yes
Contiguous: Yes
Permitted: Yes
Wet space: Yes
Addition: No
Conversion: No

1963 Edgewater Drive, Edgewater Drive, Clearwater, Pinellas
County, Florida, United States, 33755

9 Floor 1 - Foyer



Dimensions: 9'6" x 10'10"
Area: 109 sq. ft
Counted as living area: Yes

Heated: Yes
Finished: Yes
Enclosed: Yes
Contiguous: Yes
Permitted: Yes
Wet space: No
Addition: No
Conversion: No

10 Floor 1 - Garage



Dimensions: 25'7" x 20'7"
Area: 447 sq. ft
Counted as living area: No

Heated: No
Finished: No
Enclosed: Yes
Contiguous: Yes
Permitted: Yes
Wet space: No
Addition: No
Conversion: No

11 Floor 1 - Bath



Dimensions: 5'3" x 8'7"
Area: 45 sq. ft
Counted as living area: Yes

Heated: Yes
Finished: Yes
Enclosed: Yes
Contiguous: Yes
Permitted: Yes
Wet space: Yes
Addition: No
Conversion: No

1963 Edgewater Drive, Edgewater Drive, Clearwater, Pinellas
County, Florida, United States, 33755

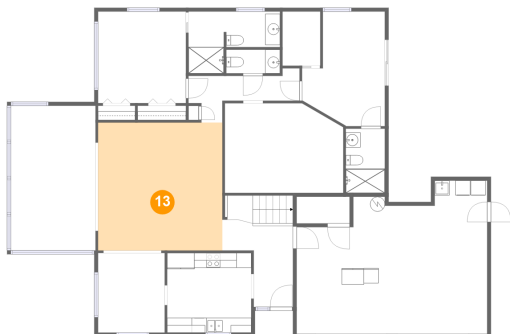
12 Floor 1 - Office



Dimensions: 15'11" x 12'0"
Area: 182 sq. ft
Counted as living area: Yes

Heated: Yes
Finished: Yes
Enclosed: Yes
Contiguous: Yes
Permitted: Yes
Wet space: No
Addition: No
Conversion: No

13 Floor 1 - Dining Room



Dimensions: 16'8" x 17'2"
Area: 286 sq. ft
Counted as living area: Yes

Heated: Yes
Finished: Yes
Enclosed: Yes
Contiguous: Yes
Permitted: Yes
Wet space: No
Addition: No
Conversion: No

14 Floor 1 - Room

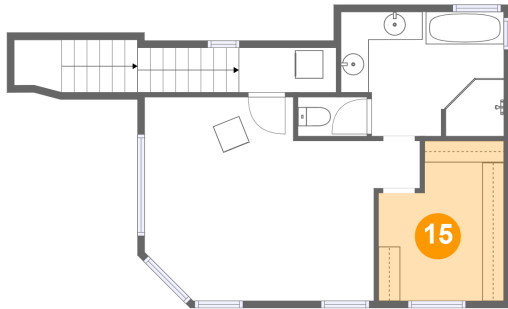


Dimensions: 11'1" x 15'5"
Area: 140 sq. ft
Counted as living area: Yes

Heated: Yes
Finished: Yes
Enclosed: Yes
Contiguous: Yes
Permitted: Yes
Wet space: No
Addition: No
Conversion: No

1963 Edgewater Drive, Edgewater Drive, Clearwater, Pinellas
County, Florida, United States, 33755

15 Floor 2 - W.I.C.



Dimensions: 8'11" x 11'5"
Area: 89 sq. ft
Counted as living area: Yes

Heated: Yes
Finished: Yes
Enclosed: Yes
Contiguous: Yes
Permitted: Yes
Wet space: No
Addition: No
Conversion: No

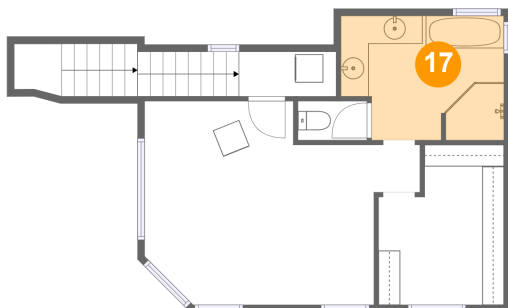
16 Floor 2 - WC



Dimensions: 4'11" x 2'9"
Area: 14 sq. ft
Counted as living area: Yes

Heated: Yes
Finished: Yes
Enclosed: Yes
Contiguous: Yes
Permitted: Yes
Wet space: Yes
Addition: No
Conversion: No

17 Floor 2 - Primary Bath



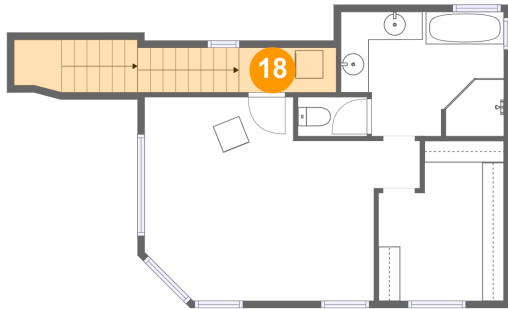
Dimensions: 11'7" x 8'10"
Area: 95 sq. ft
Counted as living area: Yes

Heated: Yes
Finished: Yes
Enclosed: Yes
Contiguous: Yes
Permitted: Yes
Wet space: Yes
Addition: No
Conversion: No

Home report

1963 Edgewater Drive, Edgewater Drive, Clearwater, Pinellas
County, Florida, United States, 33755

18 Floor 2 - Hall



Dimensions: 6'11" x 3'2"
Area: 77 sq. ft
Counted as living area: Yes

Heated: Yes
Finished: Yes
Enclosed: Yes
Contiguous: Yes
Permitted: Yes
Wet space: No
Addition: No
Conversion: No

19 Floor 2 - Primary Bedroom



Dimensions: 19'7" x 14'6"
Area: 224 sq. ft
Counted as living area: Yes

Heated: Yes
Finished: Yes
Enclosed: Yes
Contiguous: Yes
Permitted: Yes
Wet space: No
Addition: No
Conversion: No