



Home report


7704 Turtle Run Ct,Prospect,KY,US




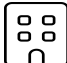
Property summary


**1** Garages


**3** Bedrooms

**2** Bathrooms

**1** Half baths

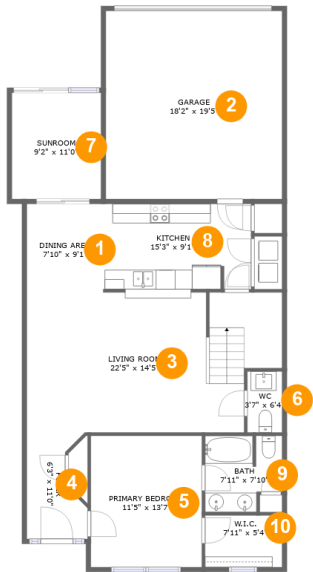
**2** Floors

**1,823** Gross living area sqft

**2,297** Total sqft

Home report

7704 Turtle Run Ct,Prospect,KY,US



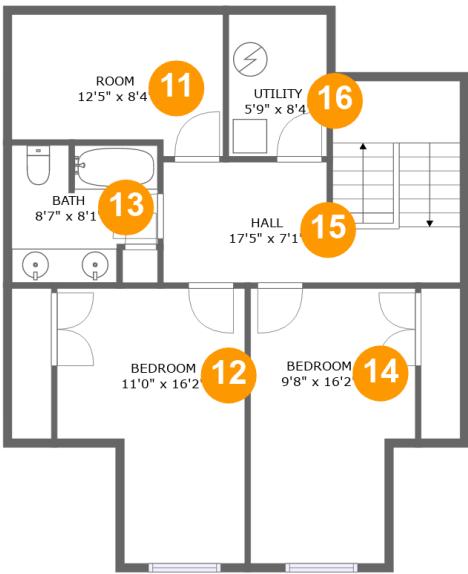
Room dimensions

Floor 1 Total sqft: 1506 Living area: 1135

#		Dimensions	sqft	Counted as living area
1	Dining Area	7'10" x 9'1"	72 sq. ft	Yes
2	Garage	18'2" x 19'5"	352 sq. ft	No
3	Living Room	22'5" x 14'5"	352 sq. ft	Yes
4	Foyer	6'3" x 11'0"	55 sq. ft	Yes
5	Primary Bedroom	11'5" x 13'7"	155 sq. ft	Yes
6	WC	3'7" x 6'4"	23 sq. ft	Yes
7	Sunroom	9'2" x 11'0"	101 sq. ft	Yes
8	Kitchen	15'3" x 9'1"	135 sq. ft	Yes
9	Bath	7'11" x 7'10"	56 sq. ft	Yes
10	W.I.C.	7'11" x 5'4"	42 sq. ft	Yes

Home report

7704 Turtle Run Ct,Prospect,KY,US



Room dimensions

Floor 2 Total sqft: 791 Living area: 688

#		Dimensions	sqft	Counted as living area
11	Room	12'5" x 8'4"	66 sq. ft	Yes
12	Bedroom	11'0" x 16'2"	142 sq. ft	Yes
13	Bath	8'7" x 8'1"	63 sq. ft	Yes
14	Bedroom	9'8" x 16'2"	140 sq. ft	Yes
15	Hall	17'5" x 7'1"	158 sq. ft	Yes
16	Utility	5'9" x 8'4"	35 sq. ft	No

1 Floor 1 - Dining Area



Dimensions: 7'10" x 9'1"
Area: 72 sq. ft
Counted as living area: Yes

Heated: Yes
Finished: Yes
Enclosed: Yes
Contiguous: Yes
Permitted: Yes
Wet space: No
Addition: No
Conversion: No

2 Floor 1 - Garage



Dimensions: 18'2" x 19'5"
Area: 352 sq. ft
Counted as living area: No

Heated: No
Finished: No
Enclosed: Yes
Contiguous: Yes
Permitted: Yes
Wet space: No
Addition: No
Conversion: No

3 Floor 1 - Living Room



Dimensions: 22'5" x 14'5"
Area: 352 sq. ft
Counted as living area: Yes

Heated: Yes
Finished: Yes
Enclosed: Yes
Contiguous: Yes
Permitted: Yes
Wet space: No
Addition: No
Conversion: No

4 Floor 1 - Foyer



Dimensions: 6'3" x 11'0"
Area: 55 sq. ft
Counted as living area: Yes

Heated: Yes
Finished: Yes
Enclosed: Yes
Contiguous: Yes
Permitted: Yes
Wet space: No
Addition: No
Conversion: No

5 Floor 1 - Primary Bedroom



Dimensions: 11'5" x 13'7"
Area: 155 sq. ft
Counted as living area: Yes

Heated: Yes
Finished: Yes
Enclosed: Yes
Contiguous: Yes
Permitted: Yes
Wet space: No
Addition: No
Conversion: No

6 Floor 1 - WC



Dimensions: 3'7" x 6'4"
Area: 23 sq. ft
Counted as living area: Yes

Heated: Yes
Finished: Yes
Enclosed: Yes
Contiguous: Yes
Permitted: Yes
Wet space: Yes
Addition: No
Conversion: No

7 Floor 1 - Sunroom



Dimensions: 9'2" x 11'0"
Area: 101 sq. ft
Counted as living area: Yes

Heated: Yes
Finished: Yes
Enclosed: Yes
Contiguous: Yes
Permitted: Yes
Wet space: No
Addition: No
Conversion: No

8 Floor 1 - Kitchen



Dimensions: 15'3" x 9'1"
Area: 135 sq. ft
Counted as living area: Yes

Heated: Yes
Finished: Yes
Enclosed: Yes
Contiguous: Yes
Permitted: Yes
Wet space: No
Addition: No
Conversion: No

9 Floor 1 - Bath



Dimensions: 7'11" x 7'10"
Area: 56 sq. ft
Counted as living area: Yes

Heated: Yes
Finished: Yes
Enclosed: Yes
Contiguous: Yes
Permitted: Yes
Wet space: Yes
Addition: No
Conversion: No

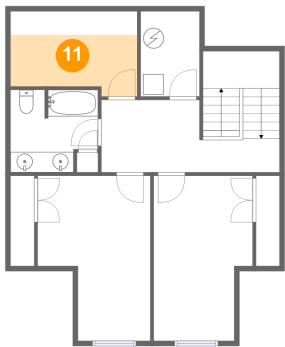
10 Floor 1 - W.I.C.



Dimensions: 7'11" x 5'4"
Area: 42 sq. ft
Counted as living area: Yes

Heated: Yes
Finished: Yes
Enclosed: Yes
Contiguous: Yes
Permitted: Yes
Wet space: No
Addition: No
Conversion: No

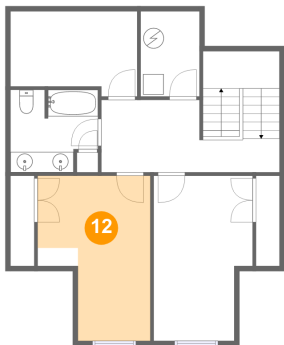
11 Floor 2 - Room



Dimensions: 12'5" x 8'4"
Area: 66 sq. ft
Counted as living area: Yes

Heated: Yes
Finished: Yes
Enclosed: Yes
Contiguous: Yes
Permitted: Yes
Wet space: No
Addition: No
Conversion: No

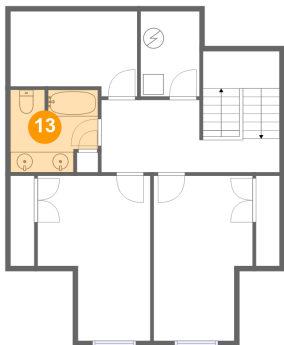
12 Floor 2 - Bedroom



Dimensions: 11'0" x 16'2"
Area: 142 sq. ft
Counted as living area: Yes

Heated: Yes
Finished: Yes
Enclosed: Yes
Contiguous: Yes
Permitted: Yes
Wet space: No
Addition: No
Conversion: No

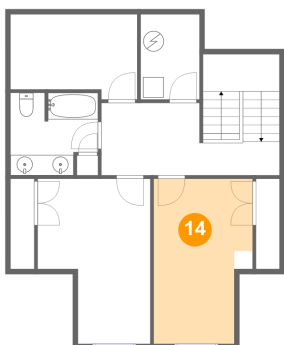
13 Floor 2 - Bath



Dimensions: 8'7" x 8'1"
Area: 63 sq. ft
Counted as living area: Yes

Heated: Yes
Finished: Yes
Enclosed: Yes
Contiguous: Yes
Permitted: Yes
Wet space: Yes
Addition: No
Conversion: No

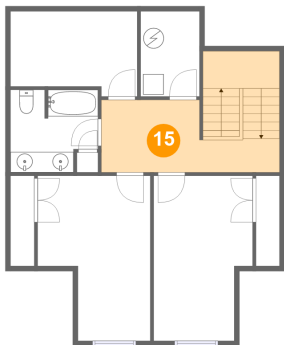
14 Floor 2 - Bedroom



Dimensions: 9'8" x 16'2"
Area: 140 sq. ft
Counted as living area: Yes

Heated: Yes
Finished: Yes
Enclosed: Yes
Contiguous: Yes
Permitted: Yes
Wet space: No
Addition: No
Conversion: No

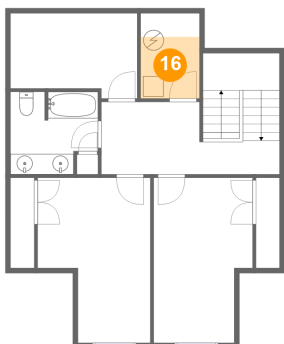
15 Floor 2 - Hall



Dimensions: 17'5" x 7'1"
Area: 158 sq. ft
Counted as living area: Yes

Heated: Yes
Finished: Yes
Enclosed: Yes
Contiguous: Yes
Permitted: Yes
Wet space: No
Addition: No
Conversion: No

16 Floor 2 - Utility



Dimensions: 5'9" x 8'4"
Area: 35 sq. ft
Counted as living area: No

Heated: Yes
Finished: No
Enclosed: Yes
Contiguous: Yes
Permitted: Yes
Wet space: No
Addition: No
Conversion: No