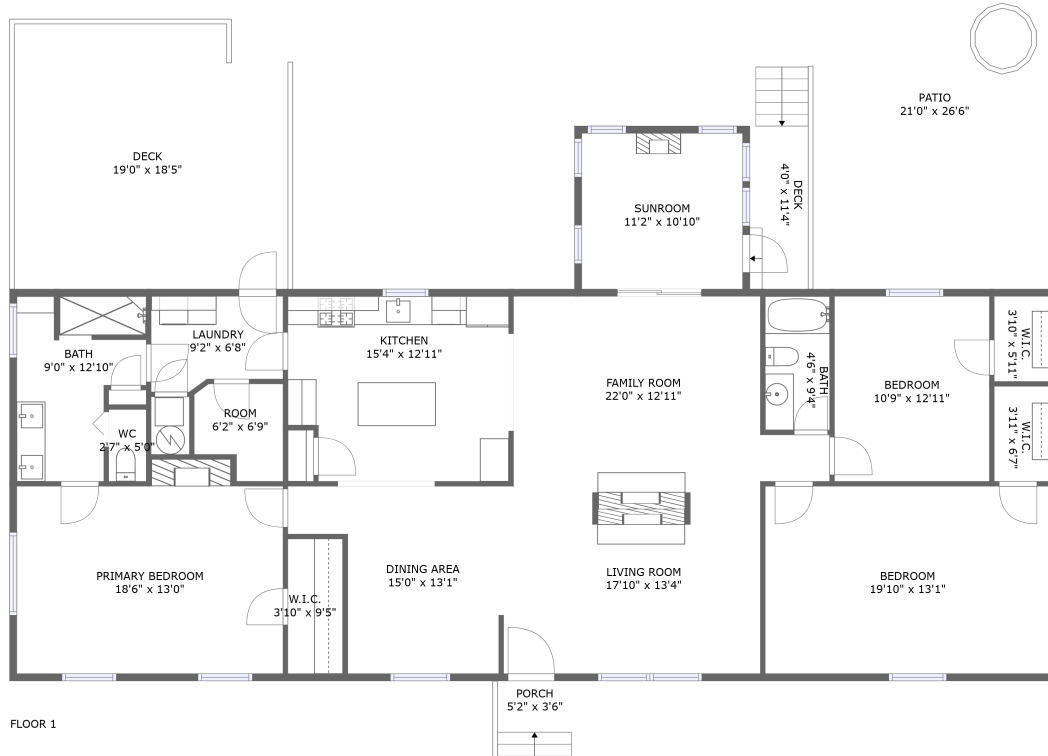


12817 Smith Mountain Lake Parkway, Huddleston, Bedford County, Virginia, United States, 24104



Property summary


 **0** Garages

 **3** Bedrooms

 **2** Bathrooms

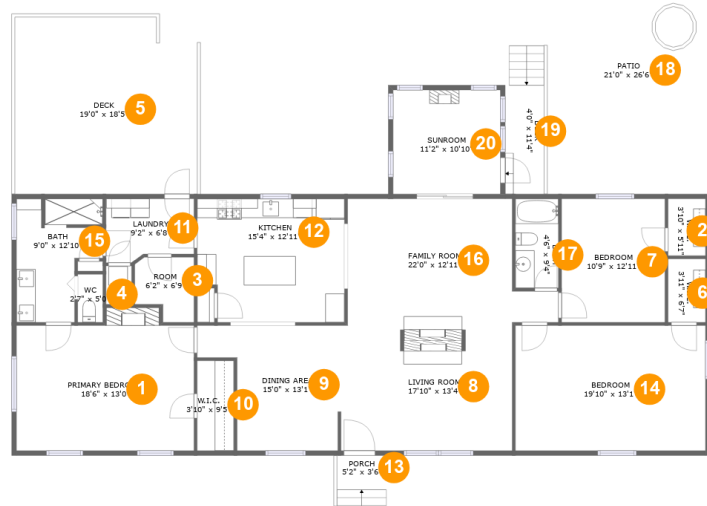
 **0** Half baths

 **1** Floors

 **2,128** Gross living area sqft

 **3,027** Total sqft

12817 Smith Mountain Lake Parkway, Huddleston, Bedford County, Virginia, United States, 24104



Room dimensions

Floor 1

Total sqft: 3027

Living area: 2128

#		Dimensions	sqft	Counted as living area
1	Primary Bedroom	18'6" x 13'0"	253 sq. ft	Yes
2	W.I.C.	3'10" x 5'11"	23 sq. ft	Yes
3	Room	6'2" x 6'9"	36 sq. ft	Yes
4	WC	2'7" x 5'0"	13 sq. ft	Yes
5	Deck	19'0" x 18'5"	340 sq. ft	No
6	W.I.C.	3'11" x 6'7"	26 sq. ft	Yes
7	Bedroom	10'9" x 12'11"	139 sq. ft	Yes
8	Living Room	17'10" x 13'4"	239 sq. ft	Yes
9	Dining Area	15'0" x 13'1"	154 sq. ft	Yes
10	W.I.C.	3'10" x 9'5"	36 sq. ft	Yes
11	Laundry	9'2" x 6'8"	56 sq. ft	Yes

**12817 Smith Mountain Lake Parkway, Huddleston,
Bedford County, Virginia, United States, 24104**

#		Dimensions	sqft	Counted as living area
12	Kitchen	15'4" x 12'11"	190 sq. ft	Yes
13	Porch	5'2" x 3'6"	18 sq. ft	No
14	Bedroom	19'10" x 13'1"	259 sq. ft	Yes
15	Bath	9'0" x 12'10"	94 sq. ft	Yes
16	Family Room	22'0" x 12'11"	237 sq. ft	Yes
17	Bath	4'6" x 9'4"	42 sq. ft	Yes
18	Patio	21'0" x 26'6"	495 sq. ft	No
19	Deck	4'0" x 11'4"	46 sq. ft	No
20	Sunroom	11'2" x 10'10"	122 sq. ft	Yes

12817 Smith Mountain Lake Parkway, Huddleston, Bedford County, Virginia, United States, 24104

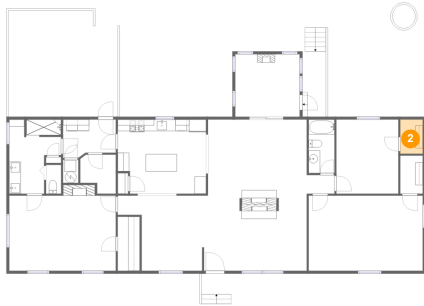
1 Floor 1 - Primary Bedroom



Dimensions: 18'6" x 13'0"
Area: 253 sq. ft
Counted as living area: Yes

Heated: Yes
Finished: Yes
Enclosed: Yes
Contiguous: Yes
Permitted: Yes
Wet space: No
Addition: No
Conversion: No

2 Floor 1 - W.I.C.



Dimensions: 3'10" x 5'11"
Area: 23 sq. ft
Counted as living area: Yes

Heated: Yes
Finished: Yes
Enclosed: Yes
Contiguous: Yes
Permitted: Yes
Wet space: No
Addition: No
Conversion: No

12817 Smith Mountain Lake Parkway, Huddleston, Bedford County, Virginia, United States, 24104

3 Floor 1 - Room



Dimensions: 6'2" x 6'9"
Area: 36 sq. ft
Counted as living area: Yes

Heated: Yes
Finished: Yes
Enclosed: Yes
Contiguous: Yes
Permitted: Yes
Wet space: No
Addition: No
Conversion: No

4 Floor 1 - WC



Dimensions: 2'7" x 5'0"
Area: 13 sq. ft
Counted as living area: Yes

Heated: Yes
Finished: Yes
Enclosed: Yes
Contiguous: Yes
Permitted: Yes
Wet space: Yes
Addition: No
Conversion: No

5 Floor 1 - Deck



Dimensions: 19'0" x 18'5"
Area: 340 sq. ft
Counted as living area: No

Heated: No
Finished: Yes
Enclosed: No
Contiguous: Yes
Permitted: Yes
Wet space: No
Addition: No
Conversion: No

12817 Smith Mountain Lake Parkway, Huddleston, Bedford County, Virginia, United States, 24104

6 Floor 1 - W.I.C.



Dimensions: 3'11" x 6'7"
Area: 26 sq. ft
Counted as living area: Yes

Heated: Yes
Finished: Yes
Enclosed: Yes
Contiguous: Yes
Permitted: Yes
Wet space: No
Addition: No
Conversion: No

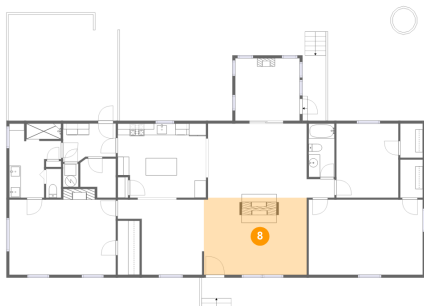
7 Floor 1 - Bedroom



Dimensions: 10'9" x 12'11"
Area: 139 sq. ft
Counted as living area: Yes

Heated: Yes
Finished: Yes
Enclosed: Yes
Contiguous: Yes
Permitted: Yes
Wet space: No
Addition: No
Conversion: No

8 Floor 1 - Living Room



Dimensions: 17'10" x 13'4"
Area: 239 sq. ft
Counted as living area: Yes

Heated: Yes
Finished: Yes
Enclosed: Yes
Contiguous: Yes
Permitted: Yes
Wet space: No
Addition: No
Conversion: No

12817 Smith Mountain Lake Parkway, Huddleston, Bedford County, Virginia, United States, 24104

9 Floor 1 - Dining Area



Dimensions: 15'0" x 13'1"
Area: 154 sq. ft
Counted as living area: Yes

Heated: Yes
Finished: Yes
Enclosed: Yes
Contiguous: Yes
Permitted: Yes
Wet space: No
Addition: No
Conversion: No

10 Floor 1 - W.I.C.



Dimensions: 3'10" x 9'5"
Area: 36 sq. ft
Counted as living area: Yes

Heated: Yes
Finished: Yes
Enclosed: Yes
Contiguous: Yes
Permitted: Yes
Wet space: No
Addition: No
Conversion: No

11 Floor 1 - Laundry



Dimensions: 9'2" x 6'8"
Area: 56 sq. ft
Counted as living area: Yes

Heated: Yes
Finished: Yes
Enclosed: Yes
Contiguous: Yes
Permitted: Yes
Wet space: No
Addition: No
Conversion: No

12817 Smith Mountain Lake Parkway, Huddleston, Bedford County, Virginia, United States, 24104

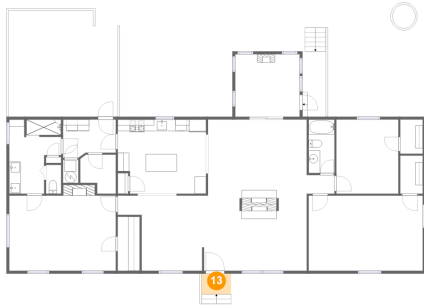
12 Floor 1 - Kitchen



Dimensions: 15'4" x 12'11"
Area: 190 sq. ft
Counted as living area: Yes

Heated: Yes
Finished: Yes
Enclosed: Yes
Contiguous: Yes
Permitted: Yes
Wet space: No
Addition: No
Conversion: No

13 Floor 1 - Porch



Dimensions: 5'2" x 3'6"
Area: 18 sq. ft
Counted as living area: No

Heated: No
Finished: Yes
Enclosed: No
Contiguous: Yes
Permitted: Yes
Wet space: No
Addition: No
Conversion: No

14 Floor 1 - Bedroom



Dimensions: 19'10" x 13'1"
Area: 259 sq. ft
Counted as living area: Yes

Heated: Yes
Finished: Yes
Enclosed: Yes
Contiguous: Yes
Permitted: Yes
Wet space: No
Addition: No
Conversion: No

12817 Smith Mountain Lake Parkway, Huddleston, Bedford County, Virginia, United States, 24104

15 Floor 1 - Bath



Dimensions: 9'0" x 12'10"
Area: 94 sq. ft
Counted as living area: Yes

Heated: Yes
Finished: Yes
Enclosed: Yes
Contiguous: Yes
Permitted: Yes
Wet space: Yes
Addition: No
Conversion: No

16 Floor 1 - Family Room



Dimensions: 22'0" x 12'11"
Area: 237 sq. ft
Counted as living area: Yes

Heated: Yes
Finished: Yes
Enclosed: Yes
Contiguous: Yes
Permitted: Yes
Wet space: No
Addition: No
Conversion: No

17 Floor 1 - Bath

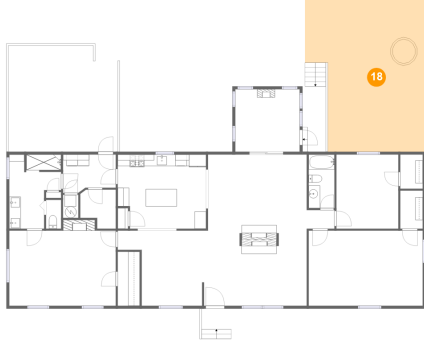


Dimensions: 4'6" x 9'4"
Area: 42 sq. ft
Counted as living area: Yes

Heated: Yes
Finished: Yes
Enclosed: Yes
Contiguous: Yes
Permitted: Yes
Wet space: Yes
Addition: No
Conversion: No

12817 Smith Mountain Lake Parkway, Huddleston, Bedford County, Virginia, United States, 24104

18 Floor 1 - Patio



Dimensions: 21'0" x 26'6"
Area: 495 sq. ft
Counted as living area: No

Heated: No
Finished: Yes
Enclosed: No
Contiguous: Yes
Permitted: Yes
Wet space: No
Addition: No
Conversion: No

19 Floor 1 - Deck



Dimensions: 4'0" x 11'4"
Area: 46 sq. ft
Counted as living area: No

Heated: No
Finished: Yes
Enclosed: No
Contiguous: Yes
Permitted: Yes
Wet space: No
Addition: No
Conversion: No

20 Floor 1 - Sunroom



Dimensions: 11'2" x 10'10"
Area: 122 sq. ft
Counted as living area: Yes

Heated: Yes
Finished: Yes
Enclosed: Yes
Contiguous: Yes
Permitted: Yes
Wet space: No
Addition: No
Conversion: No