

Home report

5107 North Spring Drive Northwest, Roanoke, Virginia 24019,
United States



Total Area: 1856 sq. ft

Floor 1: 581 sq. ft, Floor 2: 1275 sq. ft

Excluded: Garage 487 sq. ft, Outdoor Patio 418 sq. ft, Storage 49 sq. ft, Fireplace 14 sq. ft,
Outdoor Porch 81 sq. ft, Outdoor Deck 315 sq. ft

Property summary



2
Floors



3
Bedrooms



3
Bathrooms



1
Garages

Home report

5107 North Spring Drive Northwest, Roanoke, Virginia 24019, United States



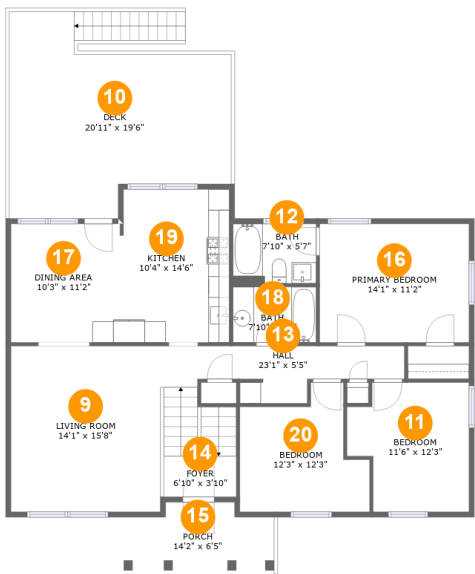
Room dimensions

Floor 1 Total:581sqft Excluded: 968sqft

#		Max Dimensions	sqft	Included
1	Hall	3'4" x 1'1"	46 sq. ft	Yes
2	Hall	9'9" x 6'11"	58 sq. ft	Yes
3	Laundry	4'0" x 7'6"	30 sq. ft	Yes
4	Garage	18'11" x 24'8"	449 sq. ft	No
5	Family Room	13'3" x 24'8"	341 sq. ft	Yes
6	Patio	24'2" x 20'0"	418 sq. ft	No
7	Bath	5'1" x 7'6"	38 sq. ft	Yes
8	Storage	3'6" x 13'2"	47 sq. ft	No

Home report

5107 North Spring Drive Northwest, Roanoke, Virginia 24019,
United States



Room dimensions

Floor 2 Total:1275sqft Excluded: 396sqft

#		Max Dimensions	sqft	Included
9	Living Room	14'1" x 15'8"	221 sq. ft	Yes
10	Deck	20'11" x 19'6"	315 sq. ft	No
11	Bedroom	11'6" x 12'3"	122 sq. ft	Yes
12	Bath	7'10" x 5'7"	44 sq. ft	Yes
13	Hall	23'1" x 5'5"	128 sq. ft	Yes
14	Foyer	6'10" x 3'10"	28 sq. ft	Yes
15	Porch	14'2" x 6'5"	81 sq. ft	No
16	Primary Bedroom	14'1" x 11'2"	158 sq. ft	Yes
17	Dining Area	10'3" x 11'2"	115 sq. ft	Yes
18	Bath	7'10" x 5'3"	41 sq. ft	Yes
19	Kitchen	10'4" x 14'6"	148 sq. ft	Yes

Home report

5107 North Spring Drive Northwest, Roanoke, Virginia 24019,
United States

#		Max Dimensions	sqft	Included
20	Bedroom	12'3" x 12'3"	116 sq. ft	Yes

5107 North Spring Drive Northwest, Roanoke, Virginia 24019,
United States

1 Floor 1 - Hall



Max Dimensions: 3'4" x 1'1"
Calculated Area: 46 sq. ft
Included: Yes

Heated: Yes
Finished: Yes
Enclosed: Yes
Contiguous: Yes
Permitted: Yes
Wet space: No
Addition: No
Conversion: No

2 Floor 1 - Hall



Max Dimensions: 9'9" x 6'11"
Calculated Area: 58 sq. ft
Included: Yes

Heated: Yes
Finished: Yes
Enclosed: Yes
Contiguous: Yes
Permitted: Yes
Wet space: No
Addition: No
Conversion: No

5107 North Spring Drive Northwest, Roanoke, Virginia 24019,
United States

3 Floor 1 - Laundry



Max Dimensions: 4'0" x 7'6"
Calculated Area: 30 sq. ft
Included: Yes

Heated: Yes
Finished: Yes
Enclosed: Yes
Contiguous: Yes
Permitted: Yes
Wet space: No
Addition: No
Conversion: No

4 Floor 1 - Garage



Max Dimensions: 18'11" x 24'8"
Calculated Area: 449 sq. ft
Included: No

Heated: No
Finished: No
Enclosed: Yes
Contiguous: Yes
Permitted: Yes
Wet space: No
Addition: No
Conversion: No

5 Floor 1 - Family Room



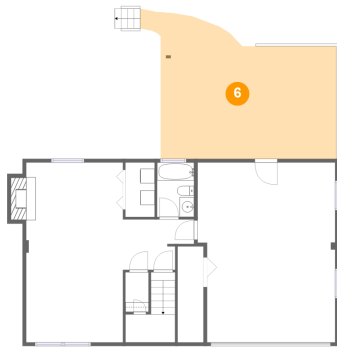
Max Dimensions: 13'3" x 24'8"
Calculated Area: 341 sq. ft
Included: Yes

Heated: Yes
Finished: Yes
Enclosed: Yes
Contiguous: Yes
Permitted: Yes
Wet space: No
Addition: No
Conversion: No

Home report

5107 North Spring Drive Northwest, Roanoke, Virginia 24019,
United States

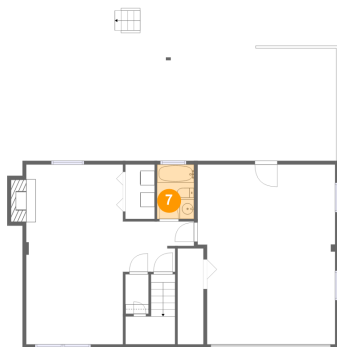
6 Floor 1 - Patio



Max Dimensions: 24'2" x 20'0"
Calculated Area: 418 sq. ft
Included: No

Heated: No
Finished: Yes
Enclosed: No
Contiguous: Yes
Permitted: Yes
Wet space: No
Addition: No
Conversion: No

7 Floor 1 - Bath



Max Dimensions: 5'1" x 7'6"
Calculated Area: 38 sq. ft
Included: Yes

Heated: Yes
Finished: Yes
Enclosed: Yes
Contiguous: Yes
Permitted: Yes
Wet space: Yes
Addition: No
Conversion: No

8 Floor 1 - Storage

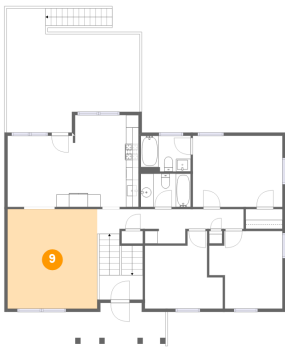


Max Dimensions: 3'6" x 13'2"
Calculated Area: 47 sq. ft
Included: No

Heated: No
Finished: No
Enclosed: No
Contiguous: Yes
Permitted: Yes
Wet space: No
Addition: No
Conversion: No

5107 North Spring Drive Northwest, Roanoke, Virginia 24019,
United States

9 Floor 2 - Living Room



Max Dimensions: 14'1" x 15'8"
Calculated Area: 221 sq. ft
Included: Yes

Heated: Yes
Finished: Yes
Enclosed: Yes
Contiguous: Yes
Permitted: Yes
Wet space: No
Addition: No
Conversion: No

10 Floor 2 - Deck



Max Dimensions: 20'11" x 19'6"
Calculated Area: 315 sq. ft
Included: No

Heated: No
Finished: Yes
Enclosed: No
Contiguous: Yes
Permitted: Yes
Wet space: No
Addition: No
Conversion: No

11 Floor 2 - Bedroom

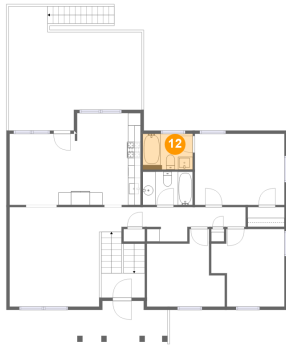


Max Dimensions: 11'6" x 12'3"
Calculated Area: 122 sq. ft
Included: Yes

Heated: Yes
Finished: Yes
Enclosed: Yes
Contiguous: Yes
Permitted: Yes
Wet space: No
Addition: No
Conversion: No

5107 North Spring Drive Northwest, Roanoke, Virginia 24019,
United States

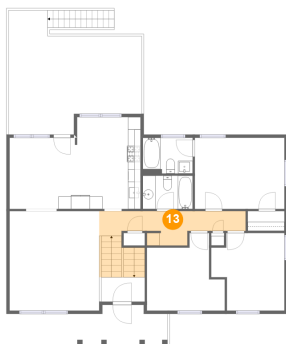
12 Floor 2 - Bath



Max Dimensions: 7'10" x 5'7"
Calculated Area: 44 sq. ft
Included: Yes

Heated: Yes
Finished: Yes
Enclosed: Yes
Contiguous: Yes
Permitted: Yes
Wet space: Yes
Addition: No
Conversion: No

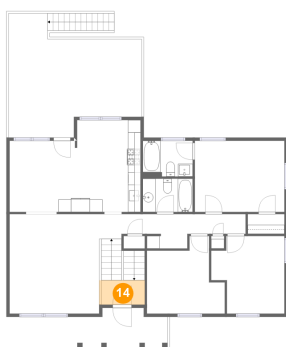
13 Floor 2 - Hall



Max Dimensions: 23'1" x 5'5"
Calculated Area: 128 sq. ft
Included: Yes

Heated: Yes
Finished: Yes
Enclosed: Yes
Contiguous: Yes
Permitted: Yes
Wet space: No
Addition: No
Conversion: No

14 Floor 2 - Foyer



Max Dimensions: 6'10" x 3'10"
Calculated Area: 28 sq. ft
Included: Yes

Heated: Yes
Finished: Yes
Enclosed: Yes
Contiguous: Yes
Permitted: Yes
Wet space: No
Addition: No
Conversion: No

5107 North Spring Drive Northwest, Roanoke, Virginia 24019,
United States

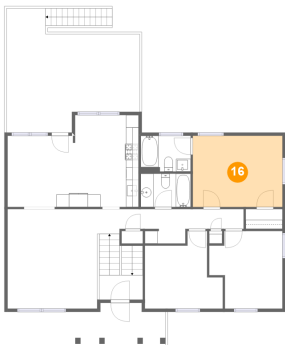
15 Floor 2 - Porch



Max Dimensions: 14'2" x 6'5"
Calculated Area: 81 sq. ft
Included: No

Heated: No
Finished: Yes
Enclosed: No
Contiguous: Yes
Permitted: Yes
Wet space: No
Addition: No
Conversion: No

16 Floor 2 - Primary Bedroom



Max Dimensions: 14'1" x 11'2"
Calculated Area: 158 sq. ft
Included: Yes

Heated: Yes
Finished: Yes
Enclosed: Yes
Contiguous: Yes
Permitted: Yes
Wet space: No
Addition: No
Conversion: No

17 Floor 2 - Dining Area



Max Dimensions: 10'3" x 11'2"
Calculated Area: 115 sq. ft
Included: Yes

Heated: Yes
Finished: Yes
Enclosed: Yes
Contiguous: Yes
Permitted: Yes
Wet space: No
Addition: No
Conversion: No

5107 North Spring Drive Northwest, Roanoke, Virginia 24019,
United States

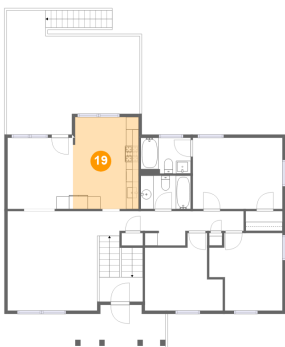
18 Floor 2 - Bath



Max Dimensions: 7'10" x 5'3"
Calculated Area: 41 sq. ft
Included: Yes

Heated: Yes
Finished: Yes
Enclosed: Yes
Contiguous: Yes
Permitted: Yes
Wet space: Yes
Addition: No
Conversion: No

19 Floor 2 - Kitchen



Max Dimensions: 10'4" x 14'6"
Calculated Area: 148 sq. ft
Included: Yes

Heated: Yes
Finished: Yes
Enclosed: Yes
Contiguous: Yes
Permitted: Yes
Wet space: No
Addition: No
Conversion: No

20 Floor 2 - Bedroom



Max Dimensions: 12'3" x 12'3"
Calculated Area: 116 sq. ft
Included: Yes

Heated: Yes
Finished: Yes
Enclosed: Yes
Contiguous: Yes
Permitted: Yes
Wet space: No
Addition: No
Conversion: No