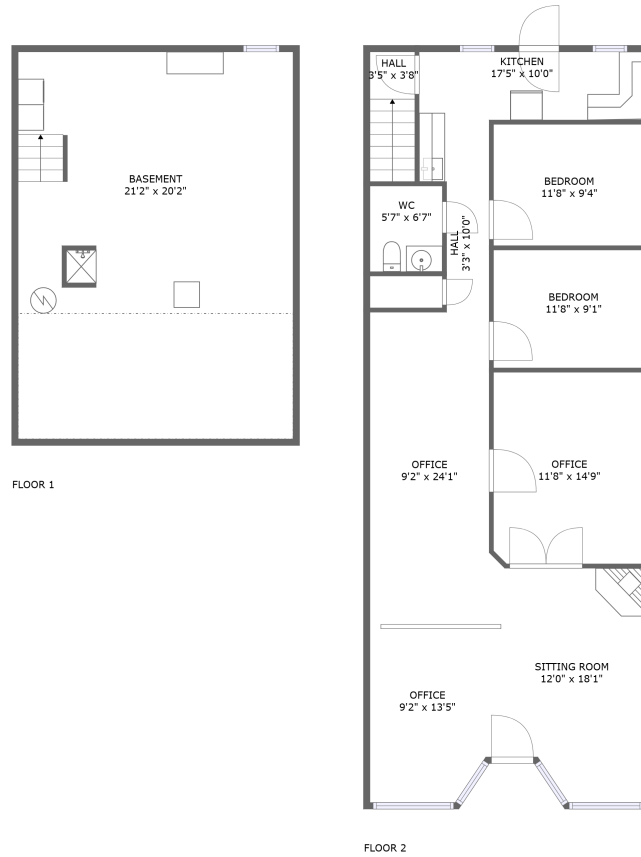


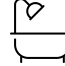
735 Main Street, Deadwood, Lawrence County, South Dakota, United States, 57732




Property Summary

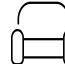
 **0** garages

 **2** bedrooms

 **0** bathrooms

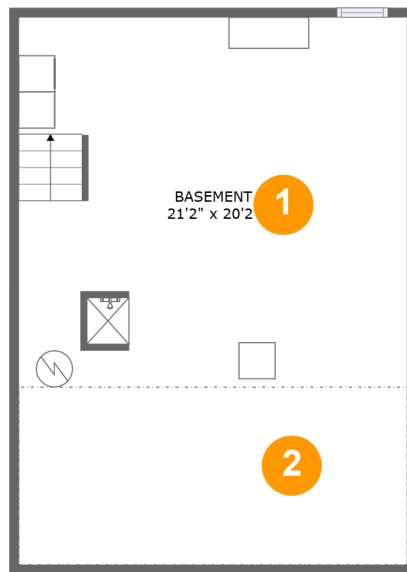
 **1** half baths

 **2** floors

 **1,283** Gross Living Area sqft

 **1,965** total sqft

**735 Main Street, Deadwood, Lawrence County,
South Dakota, United States, 57732**



Room Dimensions

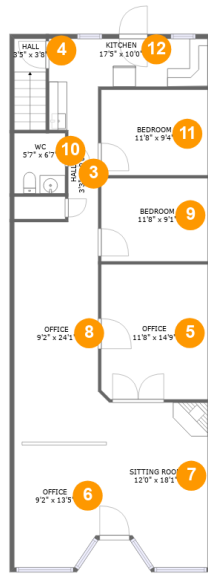
Floor 1

Total sqft: 682

Living area: 0

#	Room name	Dimensions	Area (sqft)	Counted as Living Area
1	Basement	21'2" x 20'2"	426 sq. ft	No
2	Crawl Space	21'2" x 9'8"	205 sq. ft	No

735 Main Street, Deadwood, Lawrence County, South Dakota, United States, 57732



Room Dimensions

Floor 2

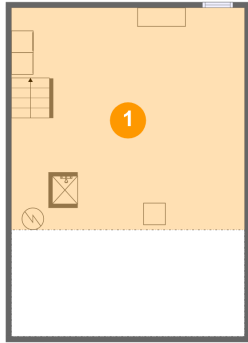
Total sqft: 1283

Living area: 1283

#	Room name	Dimensions	Area (sqft)	Counted as Living Area
3	Hall	3'3" x 10'0"	33 sq. ft	Yes
4	Hall	3'5" x 3'8"	35 sq. ft	Yes
5	Office	11'8" x 14'9"	171 sq. ft	Yes
6	Office	9'2" x 13'5"	121 sq. ft	Yes
7	Sitting Room	12'0" x 18'1"	201 sq. ft	Yes
8	Office	9'2" x 24'1"	221 sq. ft	Yes
9	Bedroom	11'8" x 9'1"	106 sq. ft	Yes
10	Wc	5'7" x 6'7"	37 sq. ft	Yes
11	Bedroom	11'8" x 9'4"	109 sq. ft	Yes
12	Kitchen	17'5" x 10'0"	117 sq. ft	Yes

735 Main Street, Deadwood, Lawrence County, South Dakota, United States, 57732

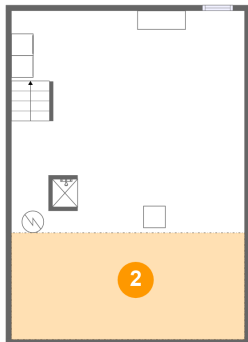
1 Floor 1 - Basement



Dimensions: 21'2" x 20'2"
Area: 426 sq. ft
Counted as Living Area: No

Heated: Yes
Finished: No
Enclosed: Yes
Contiguous: Yes
Permitted: Yes
Wet Space: No
Addition: No
Conversion: No

2 Floor 1 - Crawl Space

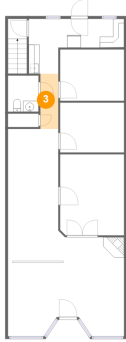


Dimensions: 21'2" x 9'8"
Area: 205 sq. ft
Counted as Living Area: No

Heated: No
Finished: No
Enclosed: No
Contiguous: Yes
Permitted: No
Wet Space: No
Addition: No
Conversion: No

735 Main Street, Deadwood, Lawrence County, South Dakota, United States, 57732

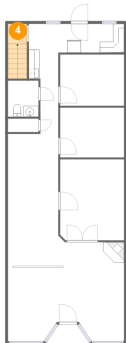
3 Floor 2 - Hall



Dimensions: 3'3" x 10'0"
Area: 33 sq. ft
Counted as Living Area:
Yes

Heated: Yes
Finished: Yes
Enclosed: Yes
Contiguous:
Yes
Permitted: Yes
Wet Space: No
Addition: No
Conversion: No

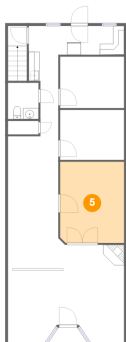
4 Floor 2 - Hall



Dimensions: 3'5" x 3'8"
Area: 35 sq. ft
Counted as Living Area:
Yes

Heated: Yes
Finished: Yes
Enclosed: Yes
Contiguous:
Yes
Permitted: Yes
Wet Space: No
Addition: No
Conversion: No

5 Floor 2 - Office

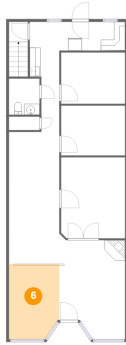


Dimensions: 11'8" x 14'9"
Area: 171 sq. ft
Counted as Living Area:
Yes

Heated: Yes
Finished: Yes
Enclosed: Yes
Contiguous:
Yes
Permitted: Yes
Wet Space: No
Addition: No
Conversion: No

**735 Main Street, Deadwood, Lawrence County,
South Dakota, United States, 57732**

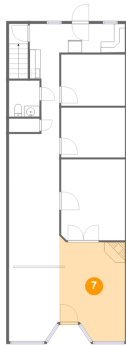
6 Floor 2 - Office



Dimensions: 9'2" x 13'5"
Area: 121 sq. ft
Counted as Living Area:
Yes

Heated: Yes
Finished: Yes
Enclosed: Yes
Contiguous:
Yes
Permitted: Yes
Wet Space: No
Addition: No
Conversion: No

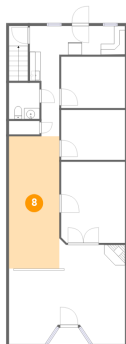
7 Floor 2 - Sitting Room



Dimensions: 12'0" x 18'1"
Area: 201 sq. ft
Counted as Living Area:
Yes

Heated: Yes
Finished: Yes
Enclosed: Yes
Contiguous:
Yes
Permitted: Yes
Wet Space: No
Addition: No
Conversion: No

8 Floor 2 - Office

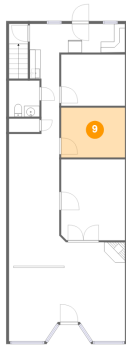


Dimensions: 9'2" x 24'1"
Area: 221 sq. ft
Counted as Living Area:
Yes

Heated: Yes
Finished: Yes
Enclosed: Yes
Contiguous:
Yes
Permitted: Yes
Wet Space: No
Addition: No
Conversion: No

735 Main Street, Deadwood, Lawrence County, South Dakota, United States, 57732

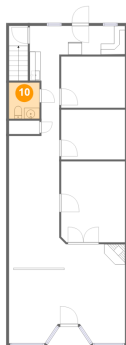
9 Floor 2 - Bedroom



Dimensions: 11'8" x 9'1"
Area: 106 sq. ft
Counted as Living Area:
Yes

Heated: Yes
Finished: Yes
Enclosed: Yes
Contiguous:
Yes
Permitted: Yes
Wet Space: No
Addition: No
Conversion: No

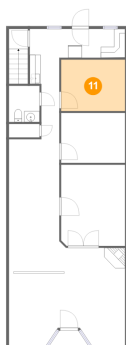
10 Floor 2 - Wc



Dimensions: 5'7" x 6'7"
Area: 37 sq. ft
Counted as Living Area:
Yes

Heated: Yes
Finished: Yes
Enclosed: Yes
Contiguous:
Yes
Permitted: Yes
Wet Space: Yes
Addition: No
Conversion: No

11 Floor 2 - Bedroom

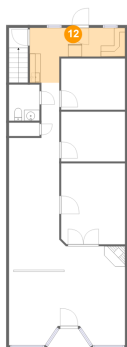


Dimensions: 11'8" x 9'4"
Area: 109 sq. ft
Counted as Living Area:
Yes

Heated: Yes
Finished: Yes
Enclosed: Yes
Contiguous:
Yes
Permitted: Yes
Wet Space: No
Addition: No
Conversion: No

**735 Main Street, Deadwood, Lawrence County,
South Dakota, United States, 57732**

12 Floor 2 - Kitchen



Dimensions: 17'5" x 10'0"

Area: 117 sq. ft

Counted as Living Area:
Yes

Heated: Yes

Finished: Yes

Enclosed: Yes

Contiguous:
Yes

Permitted: Yes

Wet Space: No

Addition: No

Conversion: No