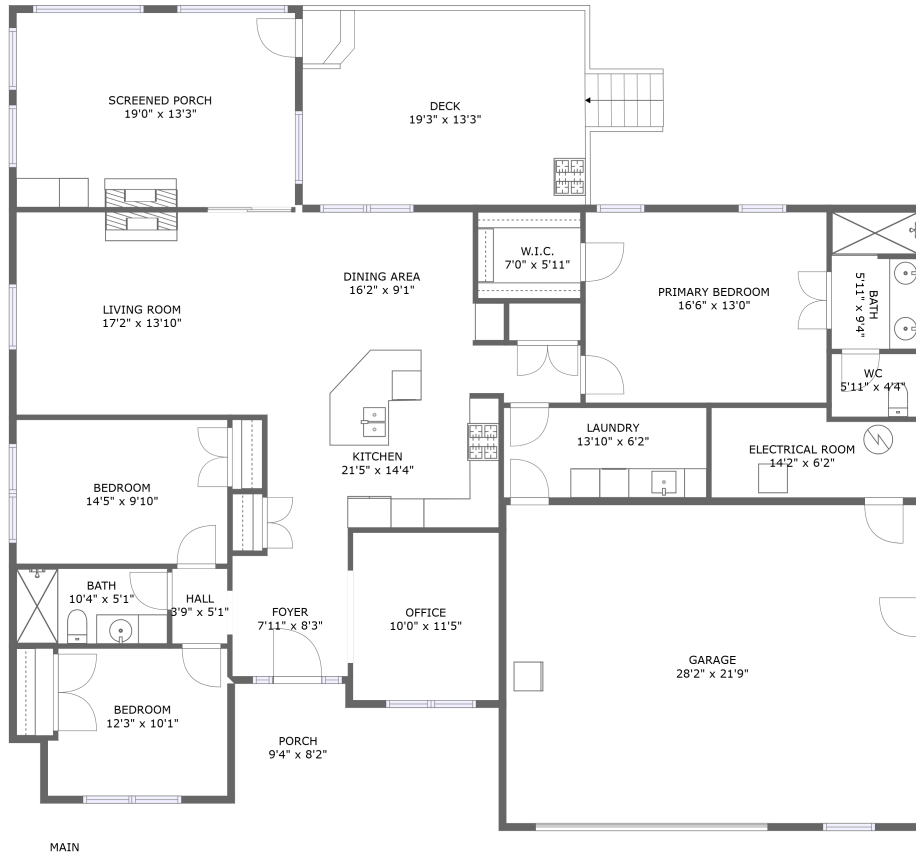






2434 Bluewater Drive, North Shore, Moneta, Franklin County, Virginia, United States, 24121



Property Summary

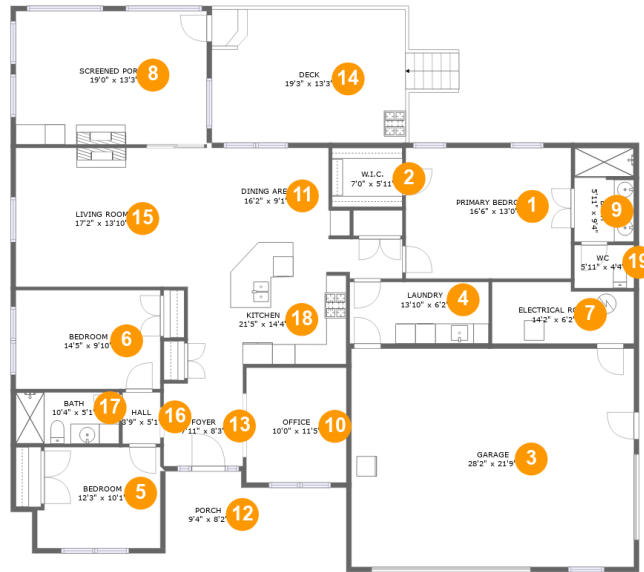
 **1** garages  **3** bedrooms  **2** bathrooms  **0** half baths

 **1** floors

 **1,737** Gross Living Area sqft

 **3,094** total sqft

2434 Bluewater Drive, North Shore, Moneta, Franklin County, Virginia, United States, 24121



Room Dimensions

Floor 1

Total sqft: 3094

Living area: 1737

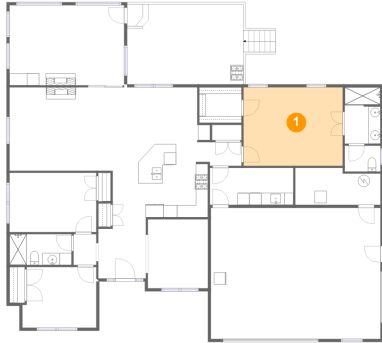
#	Room name	Dimensions	Area (sqft)	Counted as Living Area
1	Primary Bedroom	16'6" x 13'0"	214 sq. ft	Yes
2	W.i.c.	7'0" x 5'11"	41 sq. ft	Yes
3	Garage	28'2" x 21'9"	612 sq. ft	No
4	Laundry	13'10" x 6'2"	85 sq. ft	Yes
5	Bedroom	12'3" x 10'1"	119 sq. ft	Yes
6	Bedroom	14'5" x 9'10"	142 sq. ft	Yes
7	Electrical Room	14'2" x 6'2"	81 sq. ft	No
8	Screened Porch	19'0" x 13'3"	253 sq. ft	No
9	Bath	5'11" x 9'4"	55 sq. ft	Yes
10	Office	10'0" x 11'5"	114 sq. ft	Yes
11	Dining Area	16'2" x 9'1"	133 sq. ft	Yes

**2434 Bluewater Drive, North Shore, Moneta,
Franklin County, Virginia, United States, 24121**

#	Room name	Dimensions	Area (sqft)	Counted as Living Area
12	Porch	9'4" x 8'2"	73 sq. ft	No
13	Foyer	7'11" x 8'3"	65 sq. ft	Yes
14	Deck	19'3" x 13'3"	275 sq. ft	No
15	Living Room	17'2" x 13'10"	237 sq. ft	Yes
16	Hall	3'9" x 5'1"	19 sq. ft	Yes
17	Bath	10'4" x 5'1"	53 sq. ft	Yes
18	Kitchen	21'5" x 14'4"	229 sq. ft	Yes
19	Wc	5'11" x 4'4"	25 sq. ft	Yes

2434 Bluewater Drive, North Shore, Moneta, Franklin County, Virginia, United States, 24121

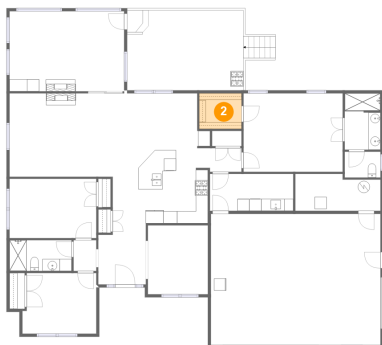
1 Floor 1 - Primary Bedroom



Dimensions: 16'6" x 13'0"
Area: 214 sq. ft
Counted as Living Area:
Yes

Heated: Yes
Finished: Yes
Enclosed: Yes
Contiguous:
Yes
Permitted: Yes
Wet Space: No
Addition: No
Conversion: No

2 Floor 1 - W.i.c.

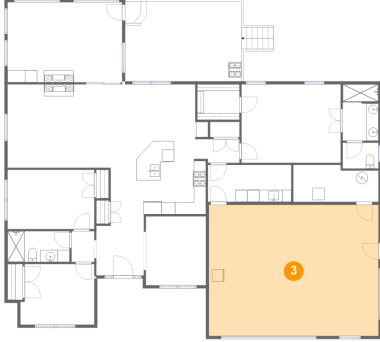


Dimensions: 7'0" x 5'11"
Area: 41 sq. ft
Counted as Living Area:
Yes

Heated: Yes
Finished: Yes
Enclosed: Yes
Contiguous:
Yes
Permitted: Yes
Wet Space: No
Addition: No
Conversion: No

2434 Bluewater Drive, North Shore, Moneta, Franklin County, Virginia, United States, 24121

3 Floor 1 - Garage



Dimensions: 28'2" x 21'9"
Area: 612 sq. ft
Counted as Living Area: No

Heated: No
Finished: No
Enclosed: Yes
Contiguous: Yes
Permitted: Yes
Wet Space: No
Addition: No
Conversion: No

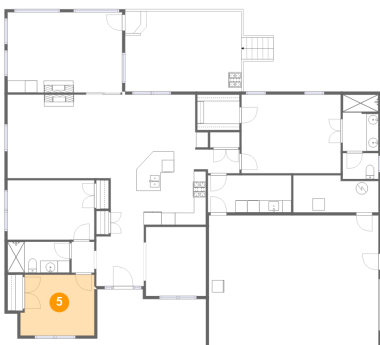
4 Floor 1 - Laundry



Dimensions: 13'10" x 6'2"
Area: 85 sq. ft
Counted as Living Area:
Yes

Heated: Yes
Finished: Yes
Enclosed: Yes
Contiguous:
Yes
Permitted: Yes
Wet Space: No
Addition: No
Conversion: No

5 Floor 1 - Bedroom

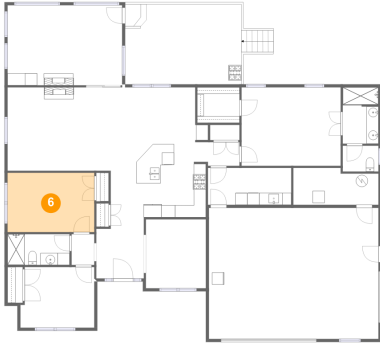


Dimensions: 12'3" x 10'1"
Area: 119 sq. ft
Counted as Living Area:
Yes

Heated: Yes
Finished: Yes
Enclosed: Yes
Contiguous:
Yes
Permitted: Yes
Wet Space: No
Addition: No
Conversion: No

2434 Bluewater Drive, North Shore, Moneta, Franklin County, Virginia, United States, 24121

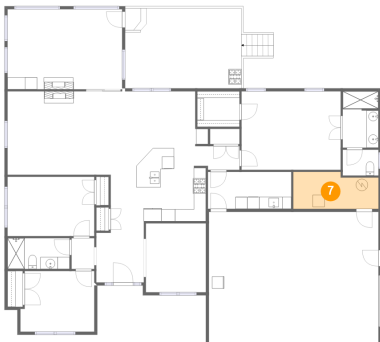
6 Floor 1 - Bedroom



Dimensions: 14'5" x 9'10"
Area: 142 sq. ft
Counted as Living Area:
Yes

Heated: Yes
Finished: Yes
Enclosed: Yes
Contiguous:
Yes
Permitted: Yes
Wet Space: No
Addition: No
Conversion: No

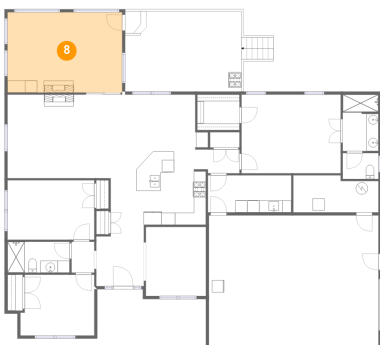
7 Floor 1 - Electrical Room



Dimensions: 14'2" x 6'2"
Area: 81 sq. ft
Counted as Living Area: No

Heated: No
Finished: No
Enclosed: Yes
Contiguous: Yes
Permitted: Yes
Wet Space: No
Addition: No
Conversion: No

8 Floor 1 - Screened Porch



Dimensions: 19'0" x 13'3"
Area: 253 sq. ft
Counted as Living Area: No

Heated: No
Finished: Yes
Enclosed: No
Contiguous: Yes
Permitted: Yes
Wet Space: No
Addition: No
Conversion: No

2434 Bluewater Drive, North Shore, Moneta, Franklin County, Virginia, United States, 24121

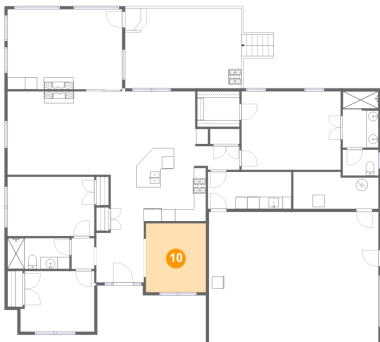
9 Floor 1 - Bath



Dimensions: 5'11" x 9'4"
Area: 55 sq. ft
Counted as Living Area:
Yes

Heated: Yes
Finished: Yes
Enclosed: Yes
Contiguous:
Yes
Permitted: Yes
Wet Space: Yes
Addition: No
Conversion: No

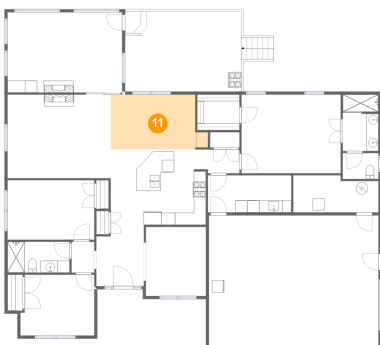
10 Floor 1 - Office



Dimensions: 10'0" x 11'5"
Area: 114 sq. ft
Counted as Living Area:
Yes

Heated: Yes
Finished: Yes
Enclosed: Yes
Contiguous:
Yes
Permitted: Yes
Wet Space: No
Addition: No
Conversion: No

11 Floor 1 - Dining Area



Dimensions: 16'2" x 9'1"
Area: 133 sq. ft
Counted as Living Area:
Yes

Heated: Yes
Finished: Yes
Enclosed: Yes
Contiguous:
Yes
Permitted: Yes
Wet Space: No
Addition: No
Conversion: No

2434 Bluewater Drive, North Shore, Moneta, Franklin County, Virginia, United States, 24121

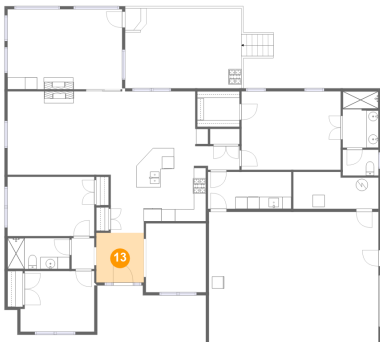
12 Floor 1 - Porch



Dimensions: 9'4" x 8'2"
Area: 73 sq. ft
Counted as Living Area: No

Heated: No
Finished: Yes
Enclosed: No
Contiguous: Yes
Permitted: Yes
Wet Space: No
Addition: No
Conversion: No

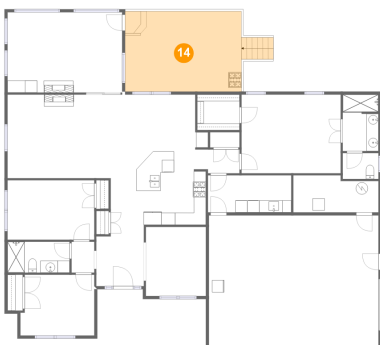
13 Floor 1 - Foyer



Dimensions: 7'11" x 8'3"
Area: 65 sq. ft
Counted as Living Area:
Yes

Heated: Yes
Finished: Yes
Enclosed: Yes
Contiguous:
Yes
Permitted: Yes
Wet Space: No
Addition: No
Conversion: No

14 Floor 1 - Deck

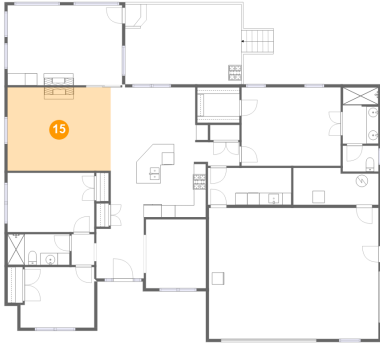


Dimensions: 19'3" x 13'3"
Area: 275 sq. ft
Counted as Living Area: No

Heated: No
Finished: Yes
Enclosed: No
Contiguous: Yes
Permitted: Yes
Wet Space: No
Addition: No
Conversion: No

2434 Bluewater Drive, North Shore, Moneta, Franklin County, Virginia, United States, 24121

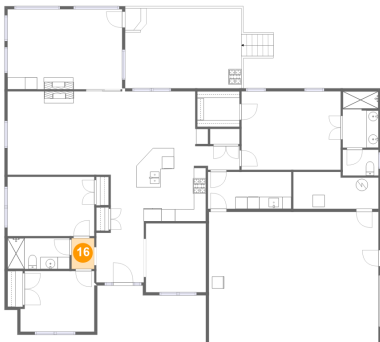
15 Floor 1 - Living Room



Dimensions: 17'2" x 13'10"
Area: 237 sq. ft
Counted as Living Area:
Yes

Heated: Yes
Finished: Yes
Enclosed: Yes
Contiguous:
Yes
Permitted: Yes
Wet Space: No
Addition: No
Conversion: No

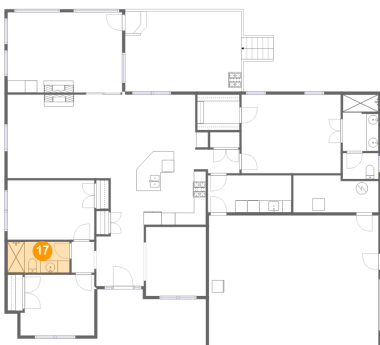
16 Floor 1 - Hall



Dimensions: 3'9" x 5'1"
Area: 19 sq. ft
Counted as Living Area:
Yes

Heated: Yes
Finished: Yes
Enclosed: Yes
Contiguous:
Yes
Permitted: Yes
Wet Space: No
Addition: No
Conversion: No

17 Floor 1 - Bath

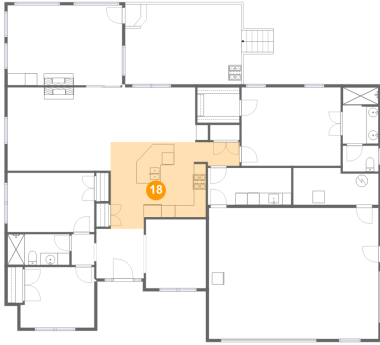


Dimensions: 10'4" x 5'1"
Area: 53 sq. ft
Counted as Living Area:
Yes

Heated: Yes
Finished: Yes
Enclosed: Yes
Contiguous:
Yes
Permitted: Yes
Wet Space: Yes
Addition: No
Conversion: No

**2434 Bluewater Drive, North Shore, Moneta,
Franklin County, Virginia, United States, 24121**

18 Floor 1 - Kitchen



Dimensions: 21'5" x 14'4"
Area: 229 sq. ft
Counted as Living Area:
Yes

Heated: Yes
Finished: Yes
Enclosed: Yes
Contiguous:
Yes
Permitted: Yes
Wet Space: No
Addition: No
Conversion: No

19 Floor 1 - Wc



Dimensions: 5'11" x 4'4"
Area: 25 sq. ft
Counted as Living Area:
Yes

Heated: Yes
Finished: Yes
Enclosed: Yes
Contiguous:
Yes
Permitted: Yes
Wet Space: Yes
Addition: No
Conversion: No