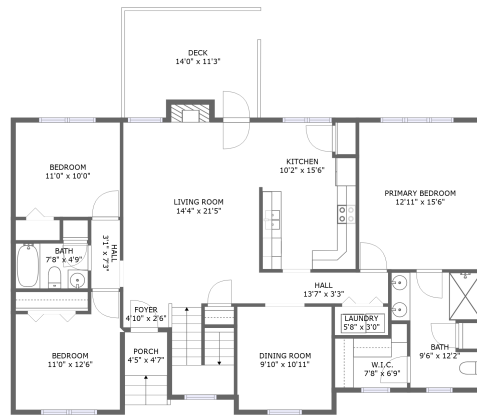
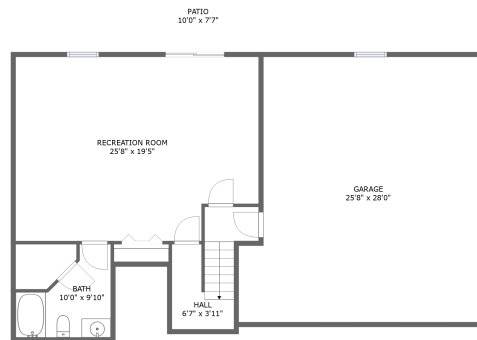


221 Doe Run, Glen Alpine, Morganton, Burke County, North Carolina, United States, 28655




FLOOR 2




FLOOR 1

Property summary

 **1** Garages

 **3** Bedrooms

 **3** Bathrooms

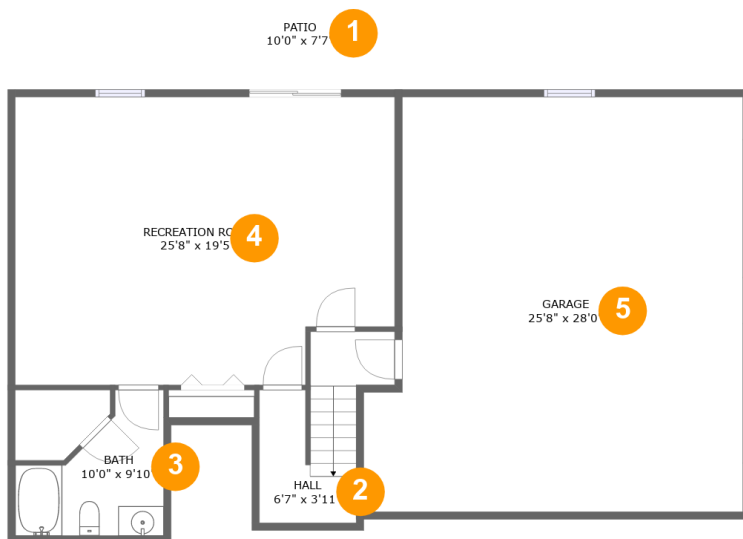
 **0** Half baths

 **2** Floors

 **2,209** Gross living area sqft

 **3,200** Total sqft

221 Doe Run, Glen Alpine, Morganton, Burke County, North Carolina, United States, 28655



Room dimensions

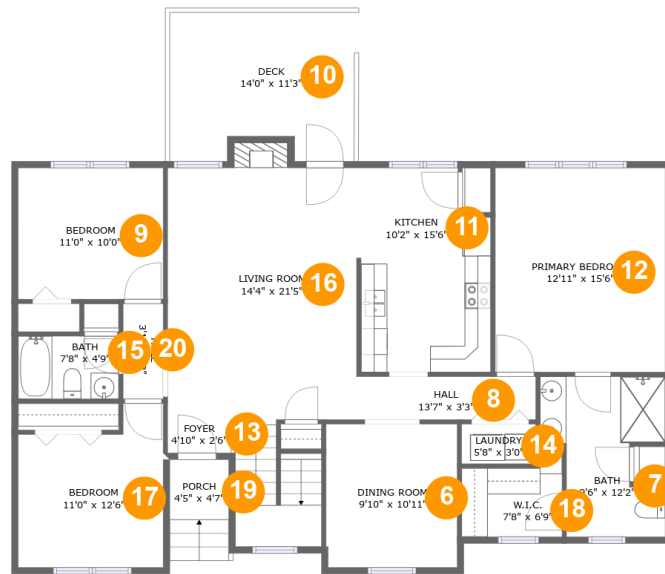
Floor 1

Total sqft: 1521

Living area: 723

#		Dimensions	sqft	Counted as living area
1	Outdoor	10'0" x 7'7"	76 sq. ft	No
2	Hall	6'7" x 3'11"	63 sq. ft	Yes
3	Bath	10'0" x 9'10"	70 sq. ft	Yes
4	Recreation Room	25'8" x 19'5"	475 sq. ft	Yes
5	Garage	25'8" x 28'0"	666 sq. ft	No

221 Doe Run, Glen Alpine, Morganton, Burke County, North Carolina, United States, 28655



Room dimensions

Floor 2

Total sqft: 1679

Living area: 1486

#		Dimensions	sqft	Counted as living area
6	Dining Room	9'10" x 10'11"	108 sq. ft	Yes
7	Bath	9'6" x 12'2"	92 sq. ft	Yes
8	Hall	13'7" x 3'3"	45 sq. ft	Yes
9	Bedroom	11'0" x 10'0"	110 sq. ft	Yes
10	Outdoor	14'0" x 11'3"	149 sq. ft	No
11	Kitchen	10'2" x 15'6"	146 sq. ft	Yes
12	Bedroom	12'11" x 15'6"	200 sq. ft	Yes
13	Entry	4'10" x 2'6"	12 sq. ft	Yes
14	Utility	5'8" x 3'0"	17 sq. ft	Yes
15	Bath	7'8" x 4'9"	36 sq. ft	Yes
16	Living Room	14'4" x 21'5"	337 sq. ft	Yes

Scan captured on Thu, 28 Nov 2024 00:42:42 GMT

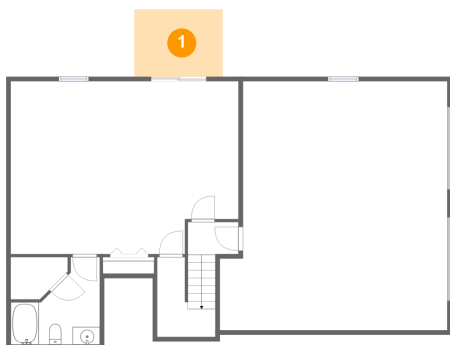
Information is calculated by Cubicasa technology deemed highly reliable but not guaranteed.

**221 Doe Run, Glen Alpine, Morganton, Burke County,
North Carolina, United States, 28655**

#		Dimensions	sqft	Counted as living area
17	Bedroom	11'0" x 12'6"	119 sq. ft	Yes
18	Cl	7'8" x 6'9"	42 sq. ft	Yes
19	Outdoor	4'5" x 4'7"	34 sq. ft	No
20	Hall	3'1" x 7'3"	22 sq. ft	Yes

221 Doe Run, Glen Alpine, Morganton, Burke County, North Carolina, United States, 28655

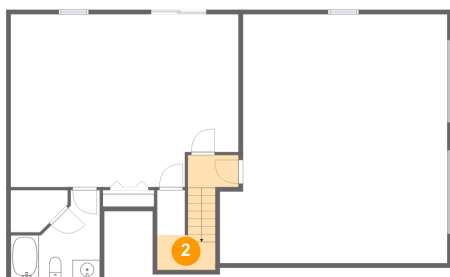
1 Floor 1 - Outdoor



Dimensions: 10'0" x 7'7"
Area: 76 sq. ft
Counted as living area: No

Heated: No
Finished: Yes
Enclosed: No
Contiguous: Yes
Permitted: Yes
Wet space: No
Addition: No
Conversion: No

2 Floor 1 - Hall

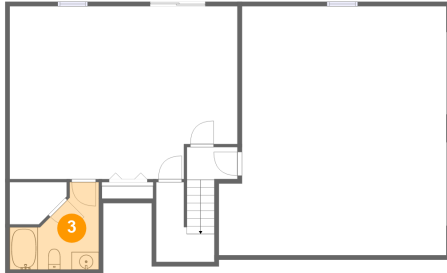


Dimensions: 6'7" x 3'11"
Area: 63 sq. ft
Counted as living area: Yes

Heated: Yes
Finished: Yes
Enclosed: Yes
Contiguous: Yes
Permitted: Yes
Wet space: No
Addition: No
Conversion: No

221 Doe Run, Glen Alpine, Morganton, Burke County, North Carolina, United States, 28655

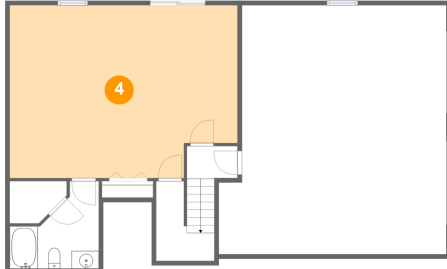
3 Floor 1 - Bath



Dimensions: 10'0" x 9'10"
Area: 70 sq. ft
Counted as living area: Yes

Heated: Yes
Finished: Yes
Enclosed: Yes
Contiguous: Yes
Permitted: Yes
Wet space: Yes
Addition: No
Conversion: No

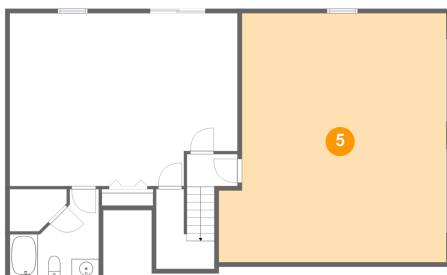
4 Floor 1 - Recreation Room



Dimensions: 25'8" x 19'5"
Area: 475 sq. ft
Counted as living area: Yes

Heated: Yes
Finished: Yes
Enclosed: Yes
Contiguous: Yes
Permitted: Yes
Wet space: No
Addition: No
Conversion: No

5 Floor 1 - Garage

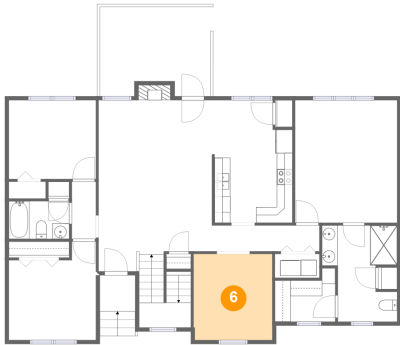


Dimensions: 25'8" x 28'0"
Area: 666 sq. ft
Counted as living area: No

Heated: No
Finished: No
Enclosed: Yes
Contiguous: Yes
Permitted: Yes
Wet space: No
Addition: No
Conversion: No

221 Doe Run, Glen Alpine, Morganton, Burke County, North Carolina, United States, 28655

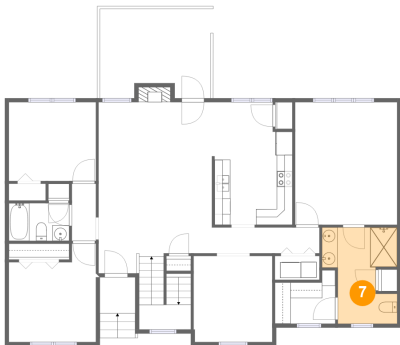
6 Floor 2 - Dining Room



Dimensions: 9'10" x 10'11"
Area: 108 sq. ft
Counted as living area: Yes

Heated: Yes
Finished: Yes
Enclosed: Yes
Contiguous: Yes
Permitted: Yes
Wet space: No
Addition: No
Conversion: No

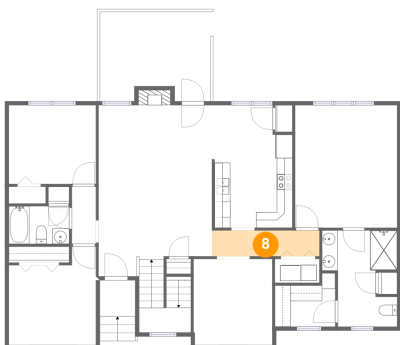
7 Floor 2 - Bath



Dimensions: 9'6" x 12'2"
Area: 92 sq. ft
Counted as living area: Yes

Heated: Yes
Finished: Yes
Enclosed: Yes
Contiguous: Yes
Permitted: Yes
Wet space: Yes
Addition: No
Conversion: No

8 Floor 2 - Hall

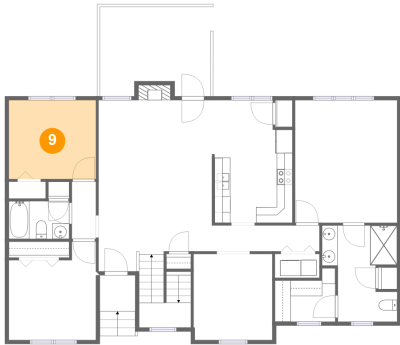


Dimensions: 13'7" x 3'3"
Area: 45 sq. ft
Counted as living area: Yes

Heated: Yes
Finished: Yes
Enclosed: Yes
Contiguous: Yes
Permitted: Yes
Wet space: No
Addition: No
Conversion: No

221 Doe Run, Glen Alpine, Morganton, Burke County, North Carolina, United States, 28655

9 Floor 2 - Bedroom



Dimensions: 11'0" x 10'0"
Area: 110 sq. ft
Counted as living area: Yes

Heated: Yes
Finished: Yes
Enclosed: Yes
Contiguous: Yes
Permitted: Yes
Wet space: No
Addition: No
Conversion: No

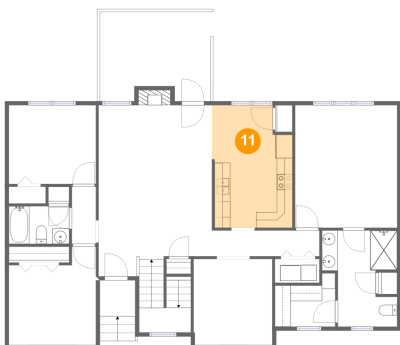
10 Floor 2 - Outdoor



Dimensions: 14'0" x 11'3"
Area: 149 sq. ft
Counted as living area: No

Heated: No
Finished: Yes
Enclosed: No
Contiguous: Yes
Permitted: Yes
Wet space: No
Addition: No
Conversion: No

11 Floor 2 - Kitchen

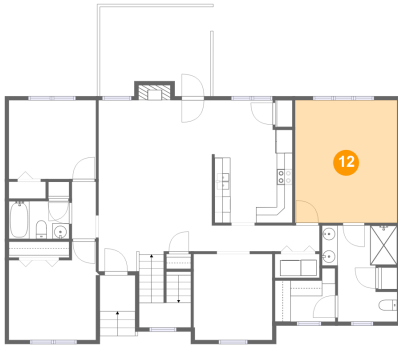


Dimensions: 10'2" x 15'6"
Area: 146 sq. ft
Counted as living area: Yes

Heated: Yes
Finished: Yes
Enclosed: Yes
Contiguous: Yes
Permitted: Yes
Wet space: No
Addition: No
Conversion: No

221 Doe Run, Glen Alpine, Morganton, Burke County, North Carolina, United States, 28655

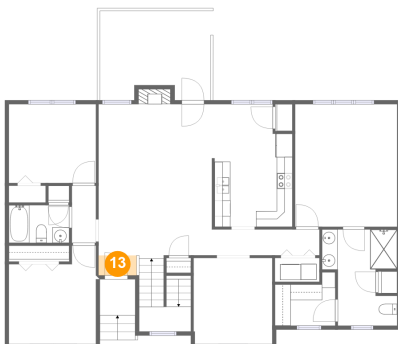
12 Floor 2 - Bedroom



Dimensions: 12'11" x 15'6"
Area: 200 sq. ft
Counted as living area: Yes

Heated: Yes
Finished: Yes
Enclosed: Yes
Contiguous: Yes
Permitted: Yes
Wet space: No
Addition: No
Conversion: No

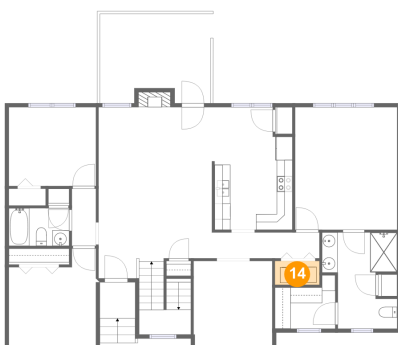
13 Floor 2 - Entry



Dimensions: 4'10" x 2'6"
Area: 12 sq. ft
Counted as living area: Yes

Heated: Yes
Finished: Yes
Enclosed: Yes
Contiguous: Yes
Permitted: Yes
Wet space: No
Addition: No
Conversion: No

14 Floor 2 - Utility



Dimensions: 5'8" x 3'0"
Area: 17 sq. ft
Counted as living area: Yes

Heated: Yes
Finished: Yes
Enclosed: Yes
Contiguous: Yes
Permitted: Yes
Wet space: No
Addition: No
Conversion: No

221 Doe Run, Glen Alpine, Morganton, Burke County, North Carolina, United States, 28655

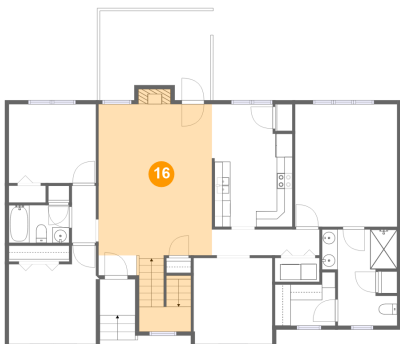
15 Floor 2 - Bath



Dimensions: 7'8" x 4'9"
Area: 36 sq. ft
Counted as living area: Yes

Heated: Yes
Finished: Yes
Enclosed: Yes
Contiguous: Yes
Permitted: Yes
Wet space: Yes
Addition: No
Conversion: No

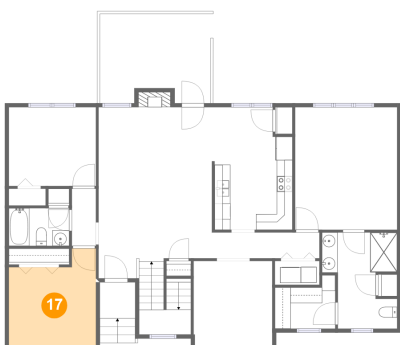
16 Floor 2 - Living Room



Dimensions: 14'4" x 21'5"
Area: 337 sq. ft
Counted as living area: Yes

Heated: Yes
Finished: Yes
Enclosed: Yes
Contiguous: Yes
Permitted: Yes
Wet space: No
Addition: No
Conversion: No

17 Floor 2 - Bedroom

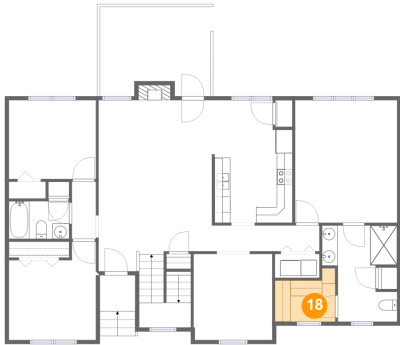


Dimensions: 11'0" x 12'6"
Area: 119 sq. ft
Counted as living area: Yes

Heated: Yes
Finished: Yes
Enclosed: Yes
Contiguous: Yes
Permitted: Yes
Wet space: No
Addition: No
Conversion: No

221 Doe Run, Glen Alpine, Morganton, Burke County, North Carolina, United States, 28655

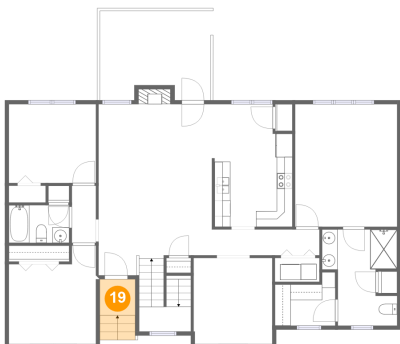
18 Floor 2 - Cl



Dimensions: 7'8" x 6'9"
Area: 42 sq. ft
Counted as living area: Yes

Heated: Yes
Finished: Yes
Enclosed: Yes
Contiguous: Yes
Permitted: Yes
Wet space: No
Addition: No
Conversion: No

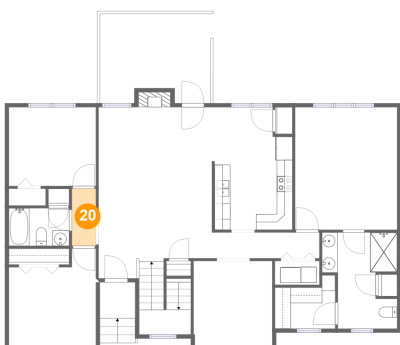
19 Floor 2 - Outdoor



Dimensions: 4'5" x 4'7"
Area: 34 sq. ft
Counted as living area: No

Heated: No
Finished: Yes
Enclosed: No
Contiguous: Yes
Permitted: Yes
Wet space: No
Addition: No
Conversion: No

20 Floor 2 - Hall



Dimensions: 3'1" x 7'3"
Area: 22 sq. ft
Counted as living area: Yes

Heated: Yes
Finished: Yes
Enclosed: Yes
Contiguous: Yes
Permitted: Yes
Wet space: No
Addition: No
Conversion: No