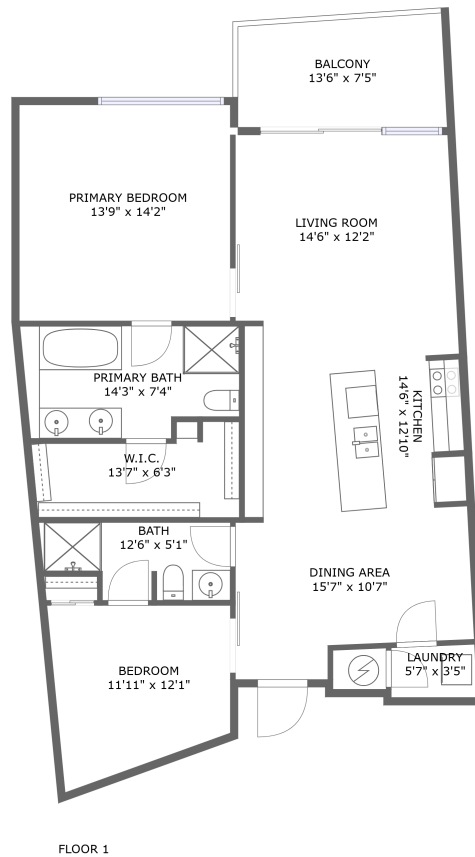




912 Channelside Drive, Channelside, Tampa, Hillsborough County, Florida, United States, 33602,



Property summary

 **0** Garages

 **2** Bedrooms

 **2** Bathrooms

 **0** Half baths

 **1** Floors

 **1,095**
Gross living
area sqft

 **1,199**
Total sqft

912 Channelside Drive, Channelside, Tampa, Hillsborough County, Florida, United States, 33602,



Room dimensions

Floor 1

Total sqft: 1199 Living area: 1095

#		Dimensions	sqft	Counted as living area
1	Living Room	14'6" x 12'2"	173 sq. ft	Yes
2	Bedroom	13'9" x 14'2"	195 sq. ft	Yes
3	Outdoor	13'6" x 7'5"	95 sq. ft	No
4	Bath	12'6" x 5'1"	55 sq. ft	Yes
5	Kitchen	14'6" x 12'10"	178 sq. ft	Yes
6	Utility	5'7" x 3'5"	19 sq. ft	Yes
7	Cl	13'7" x 6'3"	70 sq. ft	Yes
8	Dining Room	15'7" x 10'7"	144 sq. ft	Yes
9	Bedroom	11'11" x 12'1"	119 sq. ft	Yes
10	Bath	14'3" x 7'4"	97 sq. ft	Yes

**912 Channelside Drive, Channelside, Tampa,
Hillsborough County, Florida, United States, 33602,**

1 Floor 1 - Living Room



Dimensions: 14'6" x 12'2"
Area: 173 sq. ft
Counted as living area: Yes

Heated: Yes
Finished: Yes
Enclosed: Yes
Contiguous: Yes
Permitted: Yes
Wet space: No
Addition: No
Conversion: No

2 Floor 1 - Bedroom



Dimensions: 13'9" x 14'2"
Area: 195 sq. ft
Counted as living area: Yes

Heated: Yes
Finished: Yes
Enclosed: Yes
Contiguous: Yes
Permitted: Yes
Wet space: No
Addition: No
Conversion: No

912 Channelside Drive, Channelside, Tampa,
Hillsborough County, Florida, United States, 33602,

3 Floor 1 - Outdoor



Dimensions: 13'6" x 7'5"
Area: 95 sq. ft
Counted as living area: No

Heated: No
Finished: Yes
Enclosed: No
Contiguous: Yes
Permitted: Yes
Wet space: No
Addition: No
Conversion: No

4 Floor 1 - Bath



Dimensions: 12'6" x 5'1"
Area: 55 sq. ft
Counted as living area: Yes

Heated: Yes
Finished: Yes
Enclosed: Yes
Contiguous: Yes
Permitted: Yes
Wet space: Yes
Addition: No
Conversion: No

5 Floor 1 - Kitchen



Dimensions: 14'6" x 12'10"
Area: 178 sq. ft
Counted as living area: Yes

Heated: Yes
Finished: Yes
Enclosed: Yes
Contiguous: Yes
Permitted: Yes
Wet space: No
Addition: No
Conversion: No

912 Channelside Drive, Channelside, Tampa,
Hillsborough County, Florida, United States, 33602,

6 Floor 1 - Utility



Dimensions: 5'7" x 3'5"
Area: 19 sq. ft
Counted as living area: Yes

Heated: Yes
Finished: Yes
Enclosed: Yes
Contiguous: Yes
Permitted: Yes
Wet space: No
Addition: No
Conversion: No

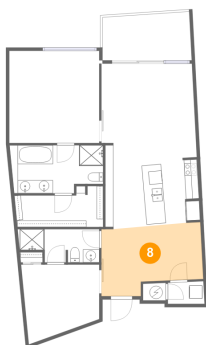
7 Floor 1 - Cl



Dimensions: 13'7" x 6'3"
Area: 70 sq. ft
Counted as living area: Yes

Heated: Yes
Finished: Yes
Enclosed: Yes
Contiguous: Yes
Permitted: Yes
Wet space: No
Addition: No
Conversion: No

8 Floor 1 - Dining Room



Dimensions: 15'7" x 10'7"
Area: 144 sq. ft
Counted as living area: Yes

Heated: Yes
Finished: Yes
Enclosed: Yes
Contiguous: Yes
Permitted: Yes
Wet space: No
Addition: No
Conversion: No

912 Channelside Drive, Channelside, Tampa,
Hillsborough County, Florida, United States, 33602,

9 Floor 1 - Bedroom



Dimensions: 11'11" x 12'1"
Area: 119 sq. ft
Counted as living area: Yes

Heated: Yes
Finished: Yes
Enclosed: Yes
Contiguous: Yes
Permitted: Yes
Wet space: No
Addition: No
Conversion: No

10 Floor 1 - Bath



Dimensions: 14'3" x 7'4"
Area: 97 sq. ft
Counted as living area: Yes

Heated: Yes
Finished: Yes
Enclosed: Yes
Contiguous: Yes
Permitted: Yes
Wet space: Yes
Addition: No
Conversion: No