

100 Posada Dr, Madison, Limestone County, Alabama, United States, 35756



Property summary

 **3** Garages

 **6** Bedrooms

 **5** Bathrooms

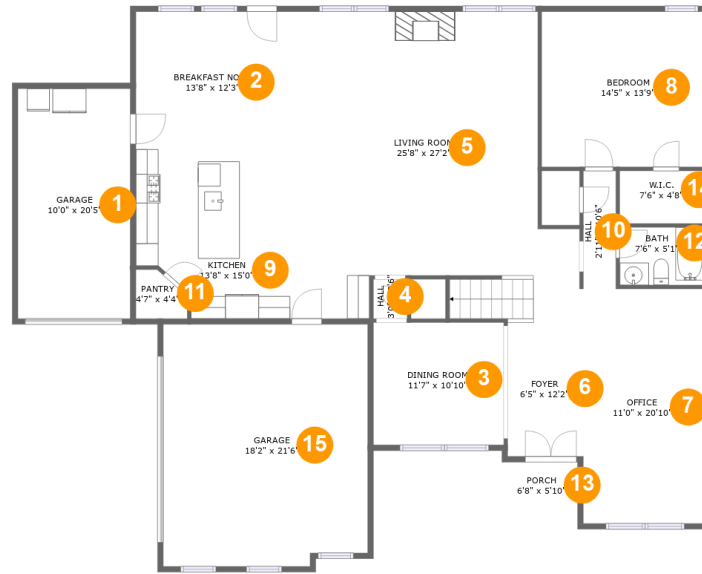
 **0** Half baths

 **3** Floors

 **5,373** Gross living area sqft

 **5,961** Total sqft

100 Posada Dr, Madison, Limestone County, Alabama, United States, 35756



Room dimensions

Floor 1

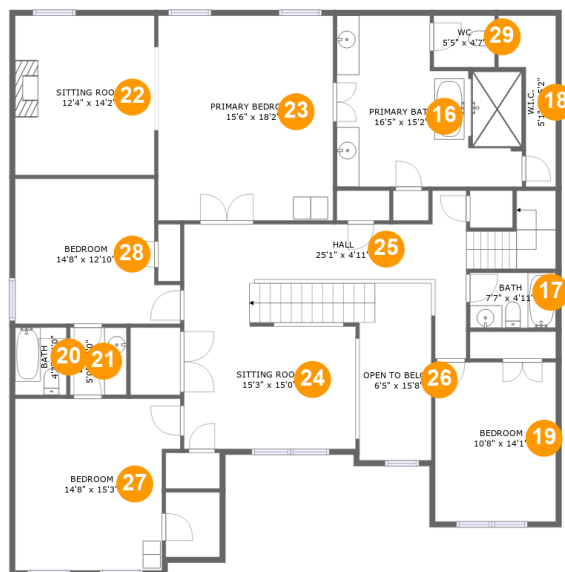
Total sqft: 2834 Living area: 2246

#		Dimensions	sqft	Counted as living area
1	Garage	10'0" x 20'5"	205 sq. ft	No
2	Breakfast Nook	13'8" x 12'3"	167 sq. ft	Yes
3	Dining Room	11'7" x 10'10"	126 sq. ft	Yes
4	Hall	3'0" x 3'6"	10 sq. ft	Yes
5	Living Room	25'8" x 27'2"	600 sq. ft	Yes
6	Foyer	6'5" x 12'2"	78 sq. ft	Yes
7	Office	11'0" x 20'10"	228 sq. ft	Yes
8	Bedroom	14'5" x 13'9"	198 sq. ft	Yes
9	Kitchen	13'8" x 15'0"	186 sq. ft	Yes
10	Hall	2'11" x 10'6"	30 sq. ft	Yes
11	Pantry	4'7" x 4'4"	17 sq. ft	Yes

**100 Posada Dr, Madison, Limestone County, Alabama,
United States, 35756**

#		Dimensions	sqft	Counted as living area
12	Bath	7'6" x 5'1"	38 sq. ft	Yes
13	Porch	6'8" x 5'10"	39 sq. ft	No
14	W.I.C.	7'6" x 4'8"	35 sq. ft	Yes
15	Garage	18'2" x 21'6"	383 sq. ft	No

100 Posada Dr, Madison, Limestone County, Alabama, United States, 35756



Room dimensions

Floor 2

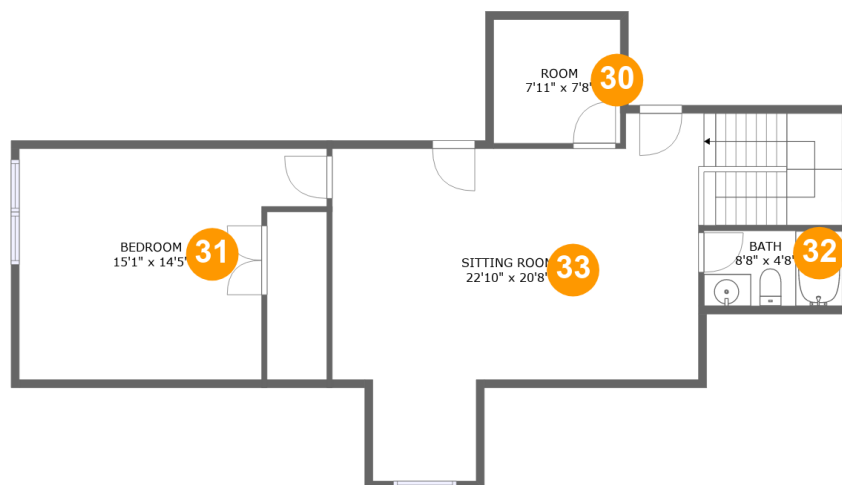
Total sqft: 2212 Living area: 2212

#		Dimensions	sqft	Counted as living area
16	Primary Bath	16'5" x 15'2"	209 sq. ft	Yes
17	Bath	7'7" x 4'11"	37 sq. ft	Yes
18	W.I.C.	5'1" x 15'2"	52 sq. ft	Yes
19	Bedroom	10'8" x 14'1"	151 sq. ft	Yes
20	Bath	4'7" x 6'0"	27 sq. ft	Yes
21	Bath	5'0" x 6'0"	30 sq. ft	Yes
22	Sitting Room	12'4" x 14'2"	175 sq. ft	Yes
23	Primary Bedroom	15'6" x 18'2"	282 sq. ft	Yes
24	Sitting Room	15'3" x 15'0"	261 sq. ft	Yes
25	Hall	25'1" x 4'11"	171 sq. ft	Yes
26	Open To Below	6'5" x 15'8"	95 sq. ft	No

**100 Posada Dr, Madison, Limestone County, Alabama,
United States, 35756**

#		Dimensions	sqft	Counted as living area
27	Bedroom	14'8" x 15'3"	205 sq. ft	Yes
28	Bedroom	14'8" x 12'10"	167 sq. ft	Yes
29	WC	5'5" x 4'7"	25 sq. ft	Yes

100 Posada Dr, Madison, Limestone County, Alabama,
United States, 35756



Room dimensions

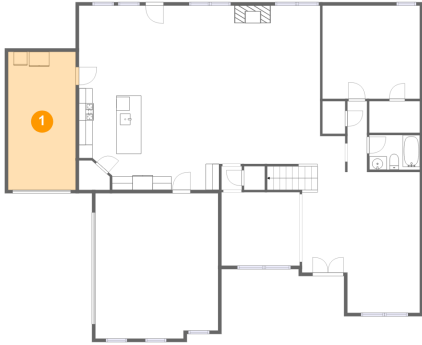
Floor 3

Total sqft: 915 Living area: 915

#		Dimensions	sqft	Counted as living area
30	Room	7'11" x 7'8"	61 sq. ft	Yes
31	Bedroom	15'1" x 14'5"	218 sq. ft	Yes
32	Bath	8'8" x 4'8"	41 sq. ft	Yes
33	Sitting Room	22'10" x 20'8"	427 sq. ft	Yes

100 Posada Dr, Madison, Limestone County, Alabama, United States, 35756

1 Floor 1 - Garage



Dimensions: 10'0" x 20'5"
Area: 205 sq. ft
Counted as living area: No

Heated: No
Finished: No
Enclosed: Yes
Contiguous: Yes
Permitted: Yes
Wet space: No
Addition: No
Conversion: No

2 Floor 1 - Breakfast Nook

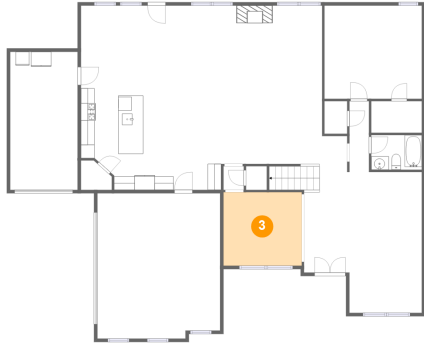


Dimensions: 13'8" x 12'3"
Area: 167 sq. ft
Counted as living area: Yes

Heated: Yes
Finished: Yes
Enclosed: Yes
Contiguous: Yes
Permitted: Yes
Wet space: No
Addition: No
Conversion: No

100 Posada Dr, Madison, Limestone County, Alabama, United States, 35756

3 Floor 1 - Dining Room



Dimensions: 11'7" x 10'10"
Area: 126 sq. ft
Counted as living area: Yes

Heated: Yes
Finished: Yes
Enclosed: Yes
Contiguous: Yes
Permitted: Yes
Wet space: No
Addition: No
Conversion: No

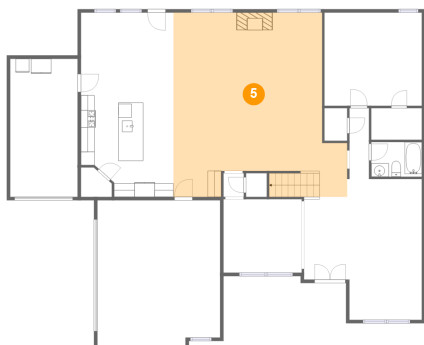
4 Floor 1 - Hall



Dimensions: 3'0" x 3'6"
Area: 10 sq. ft
Counted as living area: Yes

Heated: Yes
Finished: Yes
Enclosed: Yes
Contiguous: Yes
Permitted: Yes
Wet space: No
Addition: No
Conversion: No

5 Floor 1 - Living Room

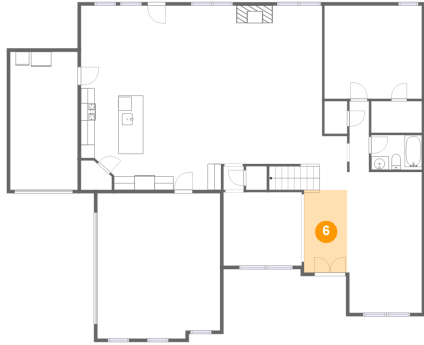


Dimensions: 25'8" x 27'2"
Area: 600 sq. ft
Counted as living area: Yes

Heated: Yes
Finished: Yes
Enclosed: Yes
Contiguous: Yes
Permitted: Yes
Wet space: No
Addition: No
Conversion: No

100 Posada Dr, Madison, Limestone County, Alabama, United States, 35756

6 Floor 1 - Foyer



Dimensions: 6'5" x 12'2"
Area: 78 sq. ft
Counted as living area: Yes

Heated: Yes
Finished: Yes
Enclosed: Yes
Contiguous: Yes
Permitted: Yes
Wet space: No
Addition: No
Conversion: No

7 Floor 1 - Office



Dimensions: 11'0" x 20'10"
Area: 228 sq. ft
Counted as living area: Yes

Heated: Yes
Finished: Yes
Enclosed: Yes
Contiguous: Yes
Permitted: Yes
Wet space: No
Addition: No
Conversion: No

8 Floor 1 - Bedroom

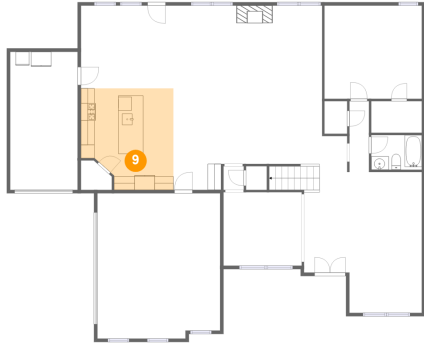


Dimensions: 14'5" x 13'9"
Area: 198 sq. ft
Counted as living area: Yes

Heated: Yes
Finished: Yes
Enclosed: Yes
Contiguous: Yes
Permitted: Yes
Wet space: No
Addition: No
Conversion: No

100 Posada Dr, Madison, Limestone County, Alabama, United States, 35756

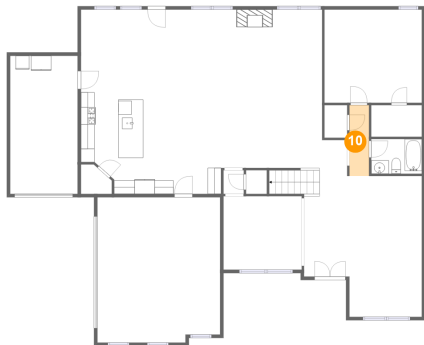
9 Floor 1 - Kitchen



Dimensions: 13'8" x 15'0"
Area: 186 sq. ft
Counted as living area: Yes

Heated: Yes
Finished: Yes
Enclosed: Yes
Contiguous: Yes
Permitted: Yes
Wet space: No
Addition: No
Conversion: No

10 Floor 1 - Hall



Dimensions: 2'11" x 10'6"
Area: 30 sq. ft
Counted as living area: Yes

Heated: Yes
Finished: Yes
Enclosed: Yes
Contiguous: Yes
Permitted: Yes
Wet space: No
Addition: No
Conversion: No

11 Floor 1 - Pantry



Dimensions: 4'7" x 4'4"
Area: 17 sq. ft
Counted as living area: Yes

Heated: Yes
Finished: Yes
Enclosed: Yes
Contiguous: Yes
Permitted: Yes
Wet space: No
Addition: No
Conversion: No

100 Posada Dr, Madison, Limestone County, Alabama, United States, 35756

12 Floor 1 - Bath



Dimensions: 7'6" x 5'1"
Area: 38 sq. ft
Counted as living area: Yes

Heated: Yes
Finished: Yes
Enclosed: Yes
Contiguous: Yes
Permitted: Yes
Wet space: Yes
Addition: No
Conversion: No

13 Floor 1 - Porch



Dimensions: 6'8" x 5'10"
Area: 39 sq. ft
Counted as living area: No

Heated: No
Finished: Yes
Enclosed: No
Contiguous: Yes
Permitted: Yes
Wet space: No
Addition: No
Conversion: No

14 Floor 1 - W.I.C.

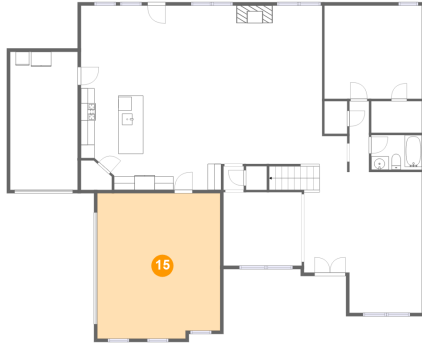


Dimensions: 7'6" x 4'8"
Area: 35 sq. ft
Counted as living area: Yes

Heated: Yes
Finished: Yes
Enclosed: Yes
Contiguous: Yes
Permitted: Yes
Wet space: No
Addition: No
Conversion: No

100 Posada Dr, Madison, Limestone County, Alabama,
United States, 35756

15 Floor 1 - Garage



Dimensions: 18'2" x 21'6"
Area: 383 sq. ft
Counted as living area: No

Heated: No
Finished: No
Enclosed: Yes
Contiguous: Yes
Permitted: Yes
Wet space: No
Addition: No
Conversion: No

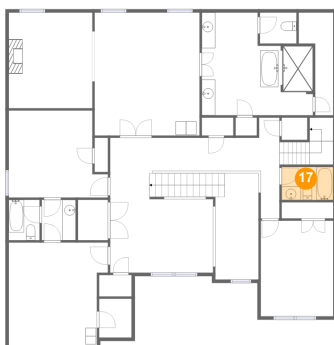
16 Floor 2 - Primary Bath



Dimensions: 16'5" x 15'2"
Area: 209 sq. ft
Counted as living area: Yes

Heated: Yes
Finished: Yes
Enclosed: Yes
Contiguous: Yes
Permitted: Yes
Wet space: Yes
Addition: No
Conversion: No

17 Floor 2 - Bath

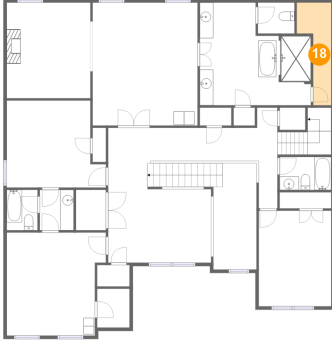


Dimensions: 7'7" x 4'11"
Area: 37 sq. ft
Counted as living area: Yes

Heated: Yes
Finished: Yes
Enclosed: Yes
Contiguous: Yes
Permitted: Yes
Wet space: Yes
Addition: No
Conversion: No

**100 Posada Dr, Madison, Limestone County, Alabama,
United States, 35756**

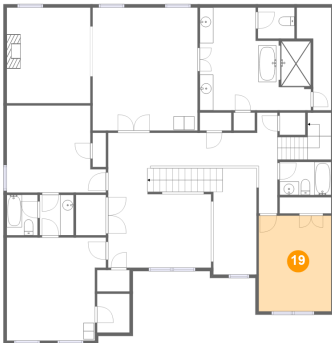
18 Floor 2 - W.I.C.



Dimensions: 5'1" x 15'2"
Area: 52 sq. ft
Counted as living area: Yes

Heated: Yes
Finished: Yes
Enclosed: Yes
Contiguous: Yes
Permitted: Yes
Wet space: No
Addition: No
Conversion: No

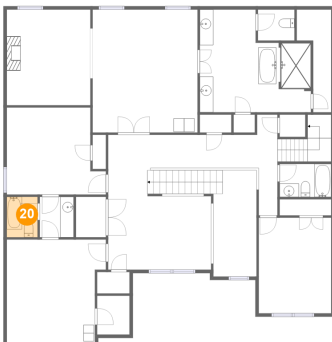
19 Floor 2 - Bedroom



Dimensions: 10'8" x 14'1"
Area: 151 sq. ft
Counted as living area: Yes

Heated: Yes
Finished: Yes
Enclosed: Yes
Contiguous: Yes
Permitted: Yes
Wet space: No
Addition: No
Conversion: No

20 Floor 2 - Bath

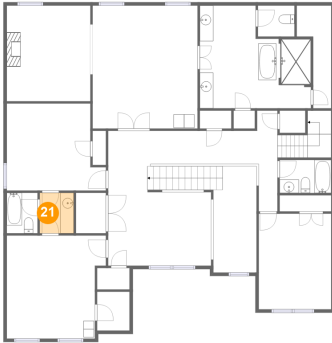


Dimensions: 4'7" x 6'0"
Area: 27 sq. ft
Counted as living area: Yes

Heated: Yes
Finished: Yes
Enclosed: Yes
Contiguous: Yes
Permitted: Yes
Wet space: Yes
Addition: No
Conversion: No

100 Posada Dr, Madison, Limestone County, Alabama, United States, 35756

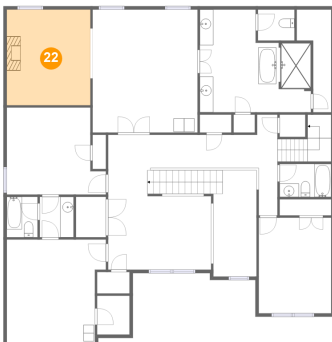
21 Floor 2 - Bath



Dimensions: 5'0" x 6'0"
Area: 30 sq. ft
Counted as living area: Yes

Heated: Yes
Finished: Yes
Enclosed: Yes
Contiguous: Yes
Permitted: Yes
Wet space: Yes
Addition: No
Conversion: No

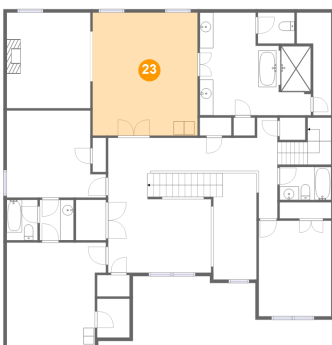
22 Floor 2 - Sitting Room



Dimensions: 12'4" x 14'2"
Area: 175 sq. ft
Counted as living area: Yes

Heated: Yes
Finished: Yes
Enclosed: Yes
Contiguous: Yes
Permitted: Yes
Wet space: No
Addition: No
Conversion: No

23 Floor 2 - Primary Bedroom

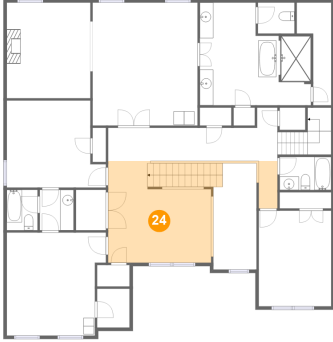


Dimensions: 15'6" x 18'2"
Area: 282 sq. ft
Counted as living area: Yes

Heated: Yes
Finished: Yes
Enclosed: Yes
Contiguous: Yes
Permitted: Yes
Wet space: No
Addition: No
Conversion: No

100 Posada Dr, Madison, Limestone County, Alabama, United States, 35756

24 Floor 2 - Sitting Room



Dimensions: 15'3" x 15'0"
Area: 261 sq. ft
Counted as living area: Yes

Heated: Yes
Finished: Yes
Enclosed: Yes
Contiguous: Yes
Permitted: Yes
Wet space: No
Addition: No
Conversion: No

25 Floor 2 - Hall



Dimensions: 25'1" x 4'11"
Area: 171 sq. ft
Counted as living area: Yes

Heated: Yes
Finished: Yes
Enclosed: Yes
Contiguous: Yes
Permitted: Yes
Wet space: No
Addition: No
Conversion: No

26 Floor 2 - Open To Below

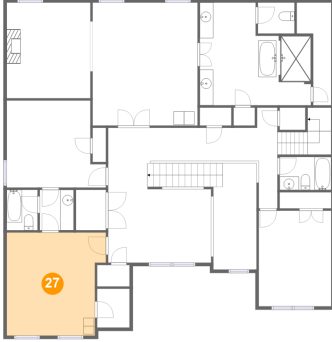


Dimensions: 6'5" x 15'8"
Area: 95 sq. ft
Counted as living area: No

Heated: No
Finished: No
Enclosed: No
Contiguous: Yes
Permitted: No
Wet space: No
Addition: No
Conversion: No

100 Posada Dr, Madison, Limestone County, Alabama, United States, 35756

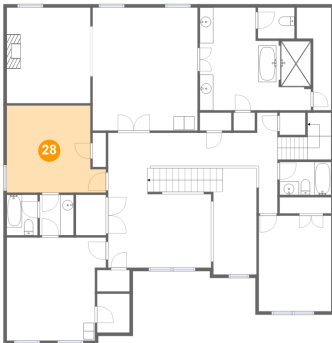
27 Floor 2 - Bedroom



Dimensions: 14'8" x 15'3"
Area: 205 sq. ft
Counted as living area: Yes

Heated: Yes
Finished: Yes
Enclosed: Yes
Contiguous: Yes
Permitted: Yes
Wet space: No
Addition: No
Conversion: No

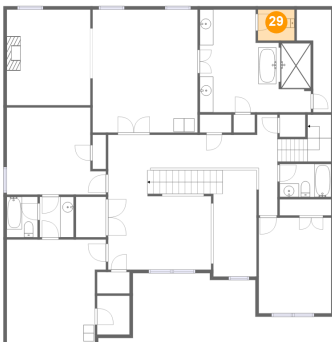
28 Floor 2 - Bedroom



Dimensions: 14'8" x 12'10"
Area: 167 sq. ft
Counted as living area: Yes

Heated: Yes
Finished: Yes
Enclosed: Yes
Contiguous: Yes
Permitted: Yes
Wet space: No
Addition: No
Conversion: No

29 Floor 2 - WC

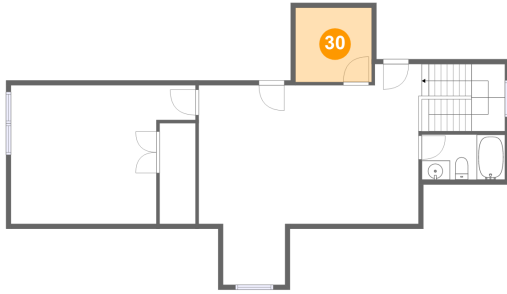


Dimensions: 5'5" x 4'7"
Area: 25 sq. ft
Counted as living area: Yes

Heated: Yes
Finished: Yes
Enclosed: Yes
Contiguous: Yes
Permitted: Yes
Wet space: Yes
Addition: No
Conversion: No

100 Posada Dr, Madison, Limestone County, Alabama,
United States, 35756

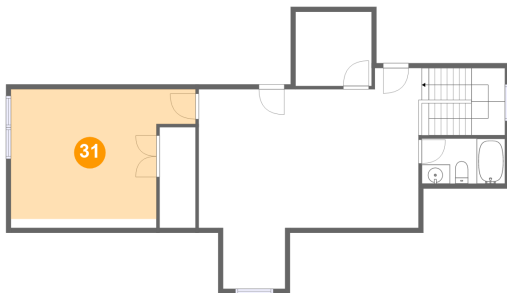
30 Floor 3 - Room



Dimensions: 7'11" x 7'8"
Area: 61 sq. ft
Counted as living area: Yes

Heated: Yes
Finished: Yes
Enclosed: Yes
Contiguous: Yes
Permitted: Yes
Wet space: No
Addition: No
Conversion: No

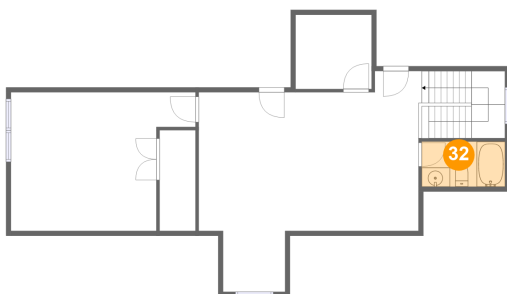
31 Floor 3 - Bedroom



Dimensions: 15'1" x 14'5"
Area: 218 sq. ft
Counted as living area: Yes

Heated: Yes
Finished: Yes
Enclosed: Yes
Contiguous: Yes
Permitted: Yes
Wet space: No
Addition: No
Conversion: No

32 Floor 3 - Bath

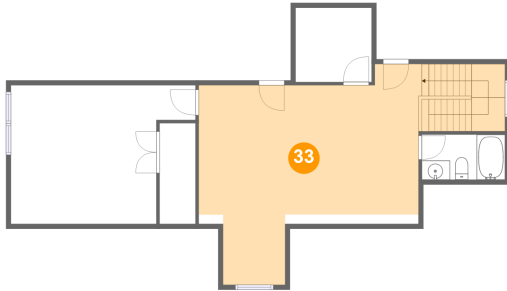


Dimensions: 8'8" x 4'8"
Area: 41 sq. ft
Counted as living area: Yes

Heated: Yes
Finished: Yes
Enclosed: Yes
Contiguous: Yes
Permitted: Yes
Wet space: Yes
Addition: No
Conversion: No

**100 Posada Dr, Madison, Limestone County, Alabama,
United States, 35756**

33 Floor 3 - Sitting Room



Dimensions: 22'10" x 20'8"
Area: 427 sq. ft
Counted as living area: Yes

Heated: Yes
Finished: Yes
Enclosed: Yes
Contiguous: Yes
Permitted: Yes
Wet space: No
Addition: No
Conversion: No