



Lisa Lembeck

**12808 E WABASH CT | 99212**

**\$495,000**

**BEDROOMS 3**

**BATHROOMS 2**

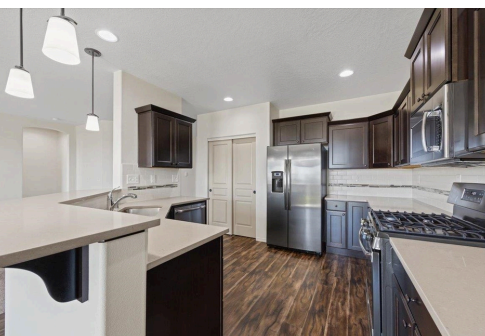
**# OF STORIES 1**



**TOTAL SQ FT 1,638**

**GARAGE CAR SIZE 3**

**LOT SIZE 8,033**



## PROPERTY OVERVIEW

Welcome to this beautifully designed one-level home in the Spokane Valley. Situated on a large 8,033 SF lot on a quiet cul de sac, you will enjoy beautiful hillside views. Built in 2019 by Hayden Homes, the home is move in ready and better than new with blinds already installed and upgrades throughout. The kitchen showcases quartz countertops, upgraded appliances, under-cabinet lighting, stylish pendant lights over the island, maple cabinets, a tile backsplash and a pantry. Vinyl plank flooring in the kitchen and dining area for durability. The spacious primary suite features a walk-in closet and bathroom with a double vanity and shower. Versatile third bedroom or den with elegant French doors. Gas fireplace. Convenient laundry room, with washer and dryer included. Central A/C for summertime comfort. A covered patio to enjoy the sunsets and a gas stub for easy BBQ setup. Expanded 3-car garage, with extra length. Fenced yard with a sprinkler system. Don't miss the chance to own this stunning property!



509.220.7482



LISA@WINDERMERE.COM

SCAN FOR TOUR

