

Home data report

65 Sheldrake Boulevard, Sherwood Park, Uptown, Toronto, Ontario, Canada, M4P 2B1, 112



Total Area: 2230 sq. ft

1st Floor: 1593 sq. ft, 2nd Floor: 637 sq. ft

Excluded: Deck 68 sq. ft, Patio 695 sq. ft

Property summary

 **2** Floors

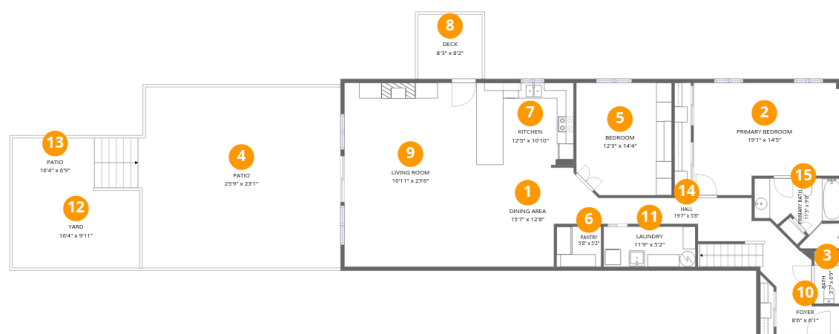
 **4** Bedrooms

 **2** Bathrooms

 **1** Half baths

Home data report

65 Sheldrake Boulevard, Sherwood Park, Uptown, Toronto, Ontario, Canada, M4P 2B1, 112



Room dimensions

Floor 1

Total: 1593sqft Excluded: 763sqft

#		Dimensions	sqft	Counted as living area
1	Dining Area	15'7" x 12'8"	160 sq. ft	Yes
2	Primary Bedroom	19'1" x 14'5"	245 sq. ft	Yes
3	Bath	3'7" x 6'9"	24 sq. ft	Yes
4	Patio	25'9" x 23'1"	587 sq. ft	No
5	Bedroom	12'3" x 14'4"	172 sq. ft	Yes
6	Pantry	5'8" x 5'2"	29 sq. ft	Yes
7	Kitchen	12'5" x 10'10"	134 sq. ft	Yes
8	Deck	8'3" x 8'2"	68 sq. ft	No
9	Living Room	16'11" x 23'6"	398 sq. ft	Yes
10	Foyer	8'6" x 6'1"	42 sq. ft	Yes
11	Laundry	11'9" x 5'2"	60 sq. ft	Yes

Home data report

**65 Shel Drake Boulevard, Sherwood Park, Uptown, Toronto,
Ontario, Canada, M4P 2B1, 112**

#		Dimensions	sqft	Counted as living area
12	Yard	16'4" x 9'11"	162 sq. ft	No
13	Patio	16'4" x 6'9"	108 sq. ft	No
14	Hall	19'7" x 5'8"	148 sq. ft	Yes
15	Primary Bath	11'3" x 9'0"	77 sq. ft	Yes

Home data report

65 Sheldrake Boulevard, Sherwood Park, Uptown, Toronto,
Ontario, Canada, M4P 2B1, 112



Room dimensions

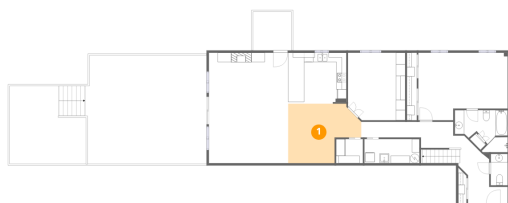
Floor 2

Total:637sqft Excluded: 0sqft

#		Dimensions	sqft	Counted as living area
16	Primary Bedroom	13'11" x 23'7"	293 sq. ft	Yes
17	Bath	4'11" x 8'10"	43 sq. ft	Yes
18	Room	5'8" x 8'4"	47 sq. ft	Yes
19	W.I.C.	7'2" x 6'4"	36 sq. ft	Yes
20	Bedroom	13'9" x 19'1"	192 sq. ft	Yes

65 Sheldrake Boulevard, Sherwood Park, Uptown, Toronto,
Ontario, Canada, M4P 2B1, 112

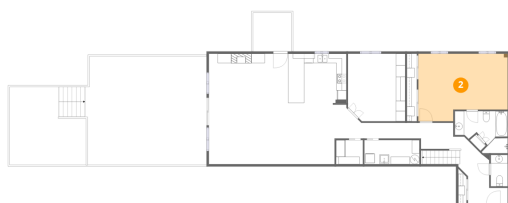
1 Floor 1 - Dining Area



Dimensions: 15'7" x 12'8"
Area: 160 sq. ft
Counted as living area: Yes

Heated: Yes
Finished: Yes
Enclosed: Yes
Contiguous: Yes
Permitted: Yes
Wet space: No
Addition: No
Conversion: No

2 Floor 1 - Primary Bedroom

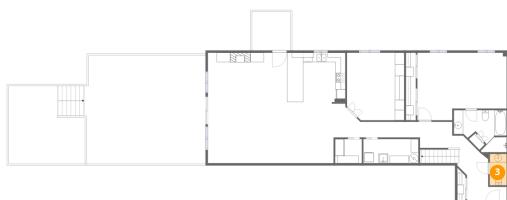


Dimensions: 19'1" x 14'5"
Area: 245 sq. ft
Counted as living area: Yes

Heated: Yes
Finished: Yes
Enclosed: Yes
Contiguous: Yes
Permitted: Yes
Wet space: No
Addition: No
Conversion: No

65 Sheldrake Boulevard, Sherwood Park, Uptown, Toronto,
Ontario, Canada, M4P 2B1, 112

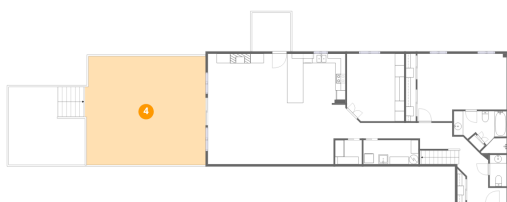
3 Floor 1 - Bath



Dimensions: 3'7" x 6'9"
Area: 24 sq. ft
Counted as living area: Yes

Heated: Yes
Finished: Yes
Enclosed: Yes
Contiguous: Yes
Permitted: Yes
Wet space: Yes
Addition: No
Conversion: No

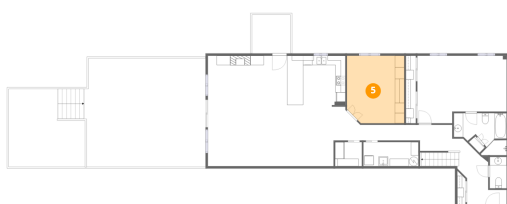
4 Floor 1 - Patio



Dimensions: 25'9" x 23'1"
Area: 587 sq. ft
Counted as living area: No

Heated: No
Finished: No
Enclosed: No
Contiguous: Yes
Permitted: Yes
Wet space: No
Addition: No
Conversion: No

5 Floor 1 - Bedroom

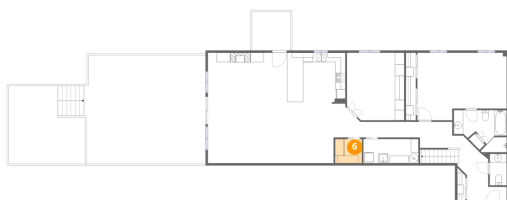


Dimensions: 12'3" x 14'4"
Area: 172 sq. ft
Counted as living area: Yes

Heated: Yes
Finished: Yes
Enclosed: Yes
Contiguous: Yes
Permitted: Yes
Wet space: No
Addition: No
Conversion: No

65 Sheldrake Boulevard, Sherwood Park, Uptown, Toronto,
Ontario, Canada, M4P 2B1, 112

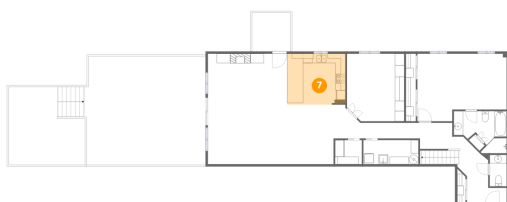
6 Floor 1 - Pantry



Dimensions: 5'8" x 5'2"
Area: 29 sq. ft
Counted as living area: Yes

Heated: Yes
Finished: Yes
Enclosed: Yes
Contiguous: Yes
Permitted: Yes
Wet space: No
Addition: No
Conversion: No

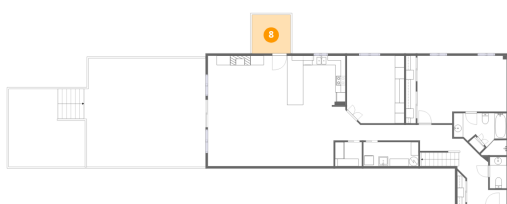
7 Floor 1 - Kitchen



Dimensions: 12'5" x 10'10"
Area: 134 sq. ft
Counted as living area: Yes

Heated: Yes
Finished: Yes
Enclosed: Yes
Contiguous: Yes
Permitted: Yes
Wet space: No
Addition: No
Conversion: No

8 Floor 1 - Deck

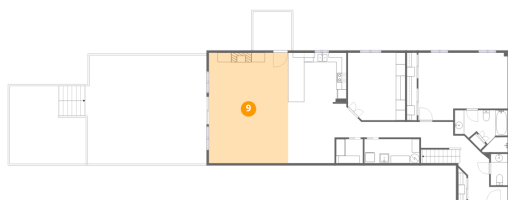


Dimensions: 8'3" x 8'2"
Area: 68 sq. ft
Counted as living area: No

Heated: No
Finished: No
Enclosed: No
Contiguous: Yes
Permitted: Yes
Wet space: No
Addition: No
Conversion: No

65 Sheldrake Boulevard, Sherwood Park, Uptown, Toronto,
Ontario, Canada, M4P 2B1, 112

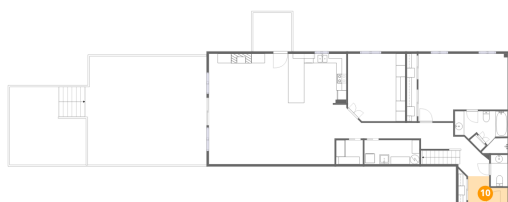
9 Floor 1 - Living Room



Dimensions: 16'11" x 23'6"
Area: 398 sq. ft
Counted as living area: Yes

Heated: Yes
Finished: Yes
Enclosed: Yes
Contiguous: Yes
Permitted: Yes
Wet space: No
Addition: No
Conversion: No

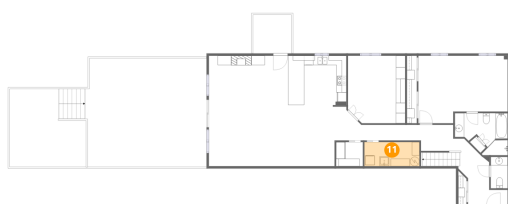
10 Floor 1 - Foyer



Dimensions: 8'6" x 6'1"
Area: 42 sq. ft
Counted as living area: Yes

Heated: Yes
Finished: Yes
Enclosed: Yes
Contiguous: Yes
Permitted: Yes
Wet space: No
Addition: No
Conversion: No

11 Floor 1 - Laundry

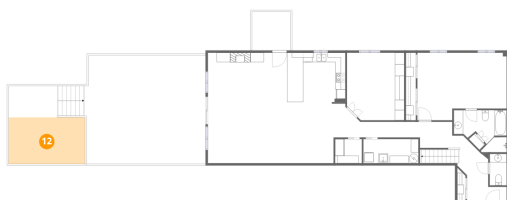


Dimensions: 11'9" x 5'2"
Area: 60 sq. ft
Counted as living area: Yes

Heated: Yes
Finished: Yes
Enclosed: Yes
Contiguous: Yes
Permitted: Yes
Wet space: No
Addition: No
Conversion: No

65 Sheldrake Boulevard, Sherwood Park, Uptown, Toronto,
Ontario, Canada, M4P 2B1, 112

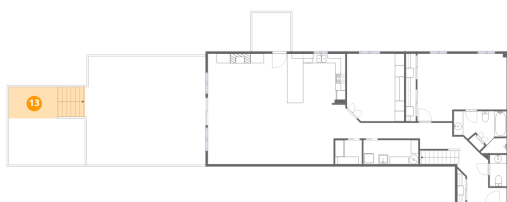
12 Floor 1 - Yard



Dimensions: 16'4" x 9'11"
Area: 162 sq. ft
Counted as living area: No

Heated: No
Finished: No
Enclosed: No
Contiguous: Yes
Permitted: No
Wet space: No
Addition: No
Conversion: No

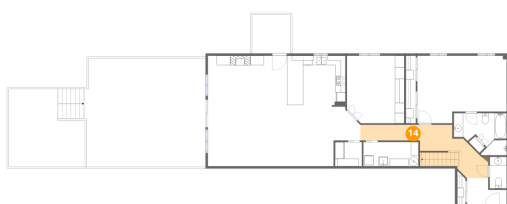
13 Floor 1 - Patio



Dimensions: 16'4" x 6'9"
Area: 108 sq. ft
Counted as living area: No

Heated: No
Finished: No
Enclosed: No
Contiguous: Yes
Permitted: Yes
Wet space: No
Addition: No
Conversion: No

14 Floor 1 - Hall

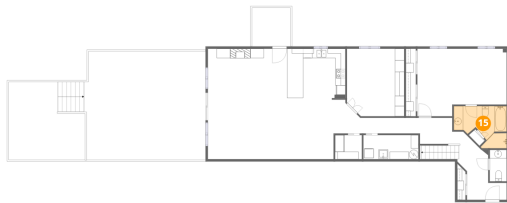


Dimensions: 19'7" x 5'8"
Area: 148 sq. ft
Counted as living area: Yes

Heated: Yes
Finished: Yes
Enclosed: Yes
Contiguous: Yes
Permitted: Yes
Wet space: No
Addition: No
Conversion: No

65 Sheldrake Boulevard, Sherwood Park, Uptown, Toronto,
Ontario, Canada, M4P 2B1, 112

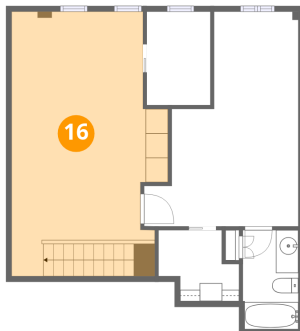
15 Floor 1 - Primary Bath



Dimensions: 11'3" x 9'0"
Area: 77 sq. ft
Counted as living area: Yes

Heated: Yes
Finished: Yes
Enclosed: Yes
Contiguous: Yes
Permitted: Yes
Wet space: Yes
Addition: No
Conversion: No

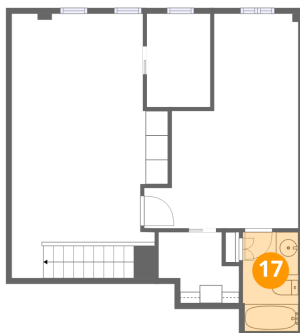
16 Floor 2 - Primary Bedroom



Dimensions: 13'11" x 23'7"
Area: 293 sq. ft
Counted as living area: Yes

Heated: Yes
Finished: Yes
Enclosed: Yes
Contiguous: Yes
Permitted: Yes
Wet space: No
Addition: No
Conversion: No

17 Floor 2 - Bath

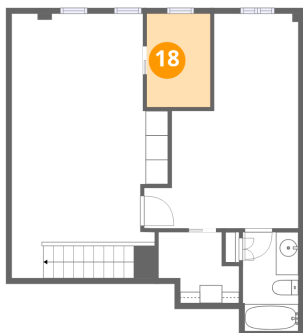


Dimensions: 4'11" x 8'10"
Area: 43 sq. ft
Counted as living area: Yes

Heated: Yes
Finished: Yes
Enclosed: Yes
Contiguous: Yes
Permitted: Yes
Wet space: Yes
Addition: No
Conversion: No

65 Sheldrake Boulevard, Sherwood Park, Uptown, Toronto,
Ontario, Canada, M4P 2B1, 112

18 Floor 2 - Room



Dimensions: 5'8" x 8'4"
Area: 47 sq. ft
Counted as living area: Yes

Heated: Yes
Finished: Yes
Enclosed: Yes
Contiguous: Yes
Permitted: Yes
Wet space: No
Addition: No
Conversion: No

19 Floor 2 - W.I.C.



Dimensions: 7'2" x 6'4"
Area: 36 sq. ft
Counted as living area: Yes

Heated: Yes
Finished: Yes
Enclosed: Yes
Contiguous: Yes
Permitted: Yes
Wet space: No
Addition: No
Conversion: No

20 Floor 2 - Bedroom



Dimensions: 13'9" x 19'1"
Area: 192 sq. ft
Counted as living area: Yes

Heated: Yes
Finished: Yes
Enclosed: Yes
Contiguous: Yes
Permitted: Yes
Wet space: No
Addition: No
Conversion: No