

415-5888 Dover Cres

Richmond BC V7C 5R9

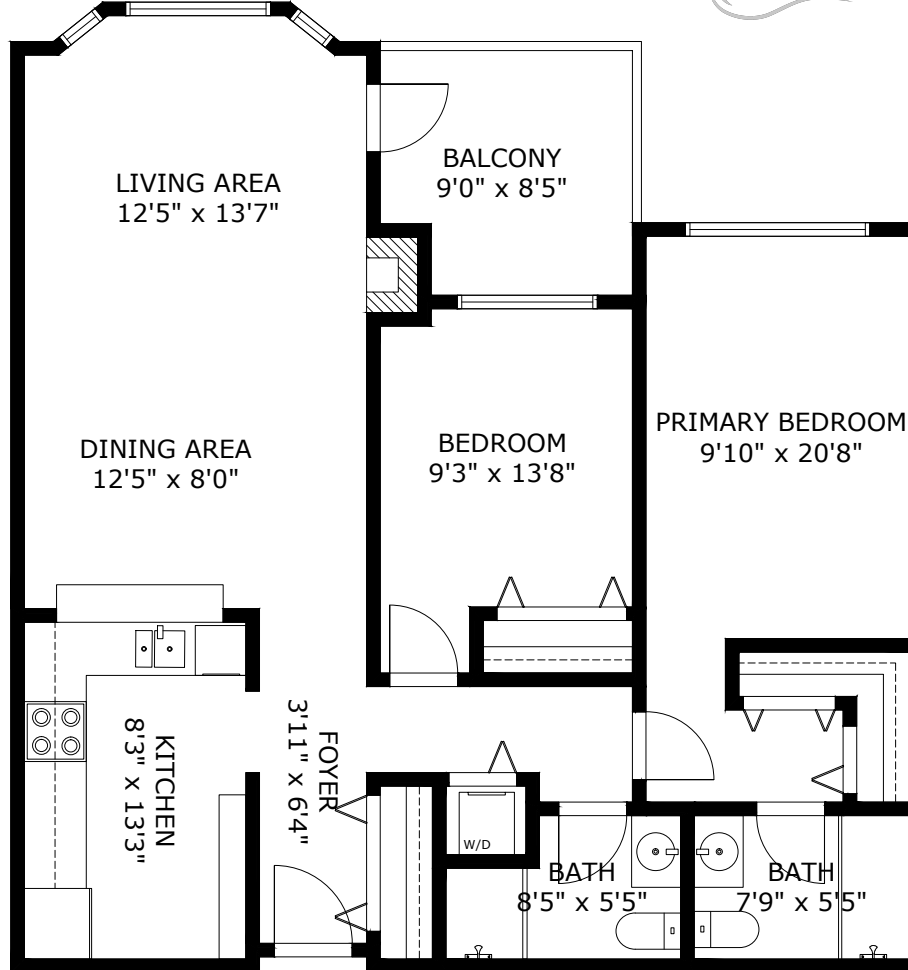
Total Area 969 SQ.FT.

Balcony Area: 75 SQ.FT.

Ceiling Height: 8'0"



KELVIN K. LUK
PERSONAL REAL ESTATE CORPORATION



415-5888 DOVER CRES RICHMOND BC V7C 5R9

Measurements are approximate and may not be to scale. Gross measurements provided by agent.
The floor plan illustration is not suitable for construction/architectural purposes.
This communication is not intended to cause or induce breach of an existing agency agreement



3D IMMERSIVE
Tours Photos Floor Plans

Professionally measured by 3D Immersive Marketing Ltd.

Lead Floor Planner: *Simon Alexander*
Quality Assurance: *Dianne Graham*