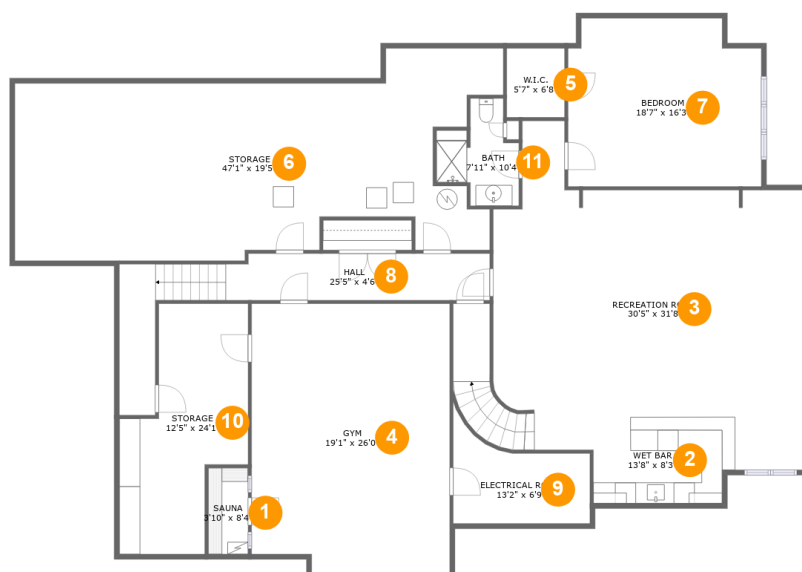




**503 Country Club Ln, Onalaska, WI, US****Room dimensions**

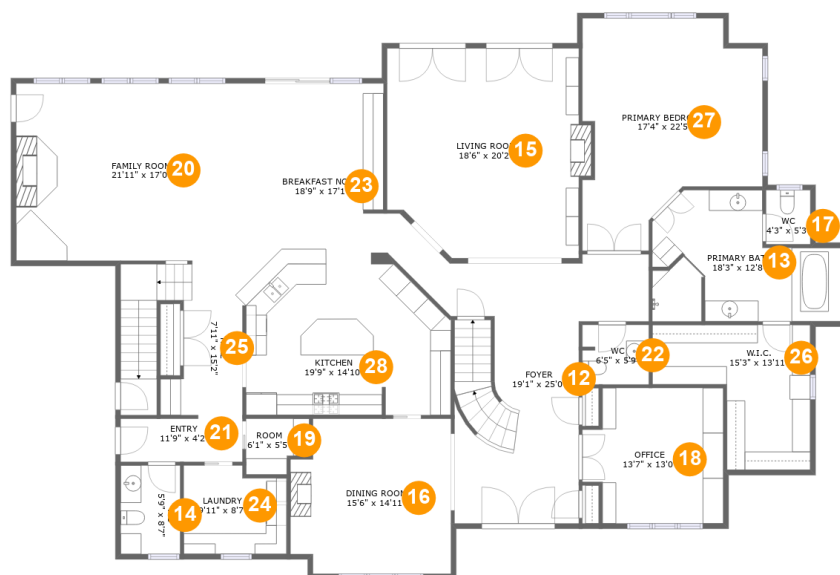
Floor 1

Total sqft: 3283 Living area: 2064

#		Dimensions	sqft	Counted as living area
1	Sauna	3'10" x 8'4"	32 sq. ft	Yes
2	Wet Bar	13'8" x 8'3"	109 sq. ft	No
3	Recreation Room	30'5" x 31'8"	793 sq. ft	Yes
4	Gym	19'1" x 26'0"	485 sq. ft	Yes
5	W.I.C.	5'7" x 6'8"	37 sq. ft	Yes
6	Storage	47'1" x 19'5"	724 sq. ft	No
7	Bedroom	18'7" x 16'3"	287 sq. ft	Yes
8	Hall	25'5" x 4'6"	186 sq. ft	Yes
9	Electrical Room	13'2" x 6'9"	97 sq. ft	No
10	Storage	12'5" x 24'1"	221 sq. ft	No
11	Bath	7'11" x 10'4"	58 sq. ft	Yes

Scan captured on Wed, 12 Mar 2025 20:38:04 GMT

Information is calculated by Cubicasa technology deemed highly reliable but not guaranteed.

**503 Country Club Ln, Onalaska, WI, US****Room dimensions**

Floor 2

Total sqft: 3332 Living area: 3332

#		Dimensions	sqft	Counted as living area
12	Foyer	19'1" x 25'0"	340 sq. ft	Yes
13	Primary Bath	18'3" x 12'8"	181 sq. ft	Yes
14	WC	5'9" x 8'7"	49 sq. ft	Yes
15	Living Room	18'6" x 20'2"	361 sq. ft	Yes
16	Dining Room	15'6" x 14'11"	219 sq. ft	Yes
17	WC	4'3" x 5'3"	22 sq. ft	Yes
18	Office	13'7" x 13'0"	162 sq. ft	Yes
19	Room	6'1" x 5'5"	29 sq. ft	Yes
20	Family Room	21'11" x 17'0"	374 sq. ft	Yes
21	Entry	11'9" x 4'2"	49 sq. ft	Yes
22	WC	6'5" x 5'9"	36 sq. ft	Yes

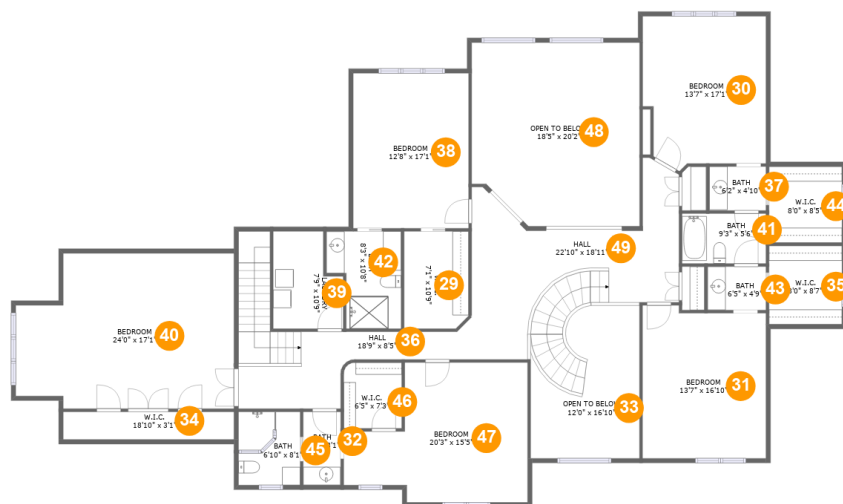
Scan captured on Wed, 12 Mar 2025 20:38:04 GMT

Information is calculated by Cubicasa technology deemed highly reliable but not guaranteed.

**503 Country Club Ln, Onalaska, WI, US**

#		Dimensions	sqft	Counted as living area
23	Breakfast Nook	18'9" x 17'1"	260 sq. ft	Yes
24	Laundry	9'11" x 8'7"	80 sq. ft	Yes
25	Hall	7'11" x 15'2"	155 sq. ft	Yes
26	W.I.C.	15'3" x 13'11"	154 sq. ft	Yes
27	Primary Bedroom	17'4" x 22'5"	308 sq. ft	Yes
28	Kitchen	19'9" x 14'10"	275 sq. ft	Yes

# 503 Country Club Ln, Onalaska, WI, US



## Room dimensions

Floor 3

Total sqft: 3246 Living area: 2700

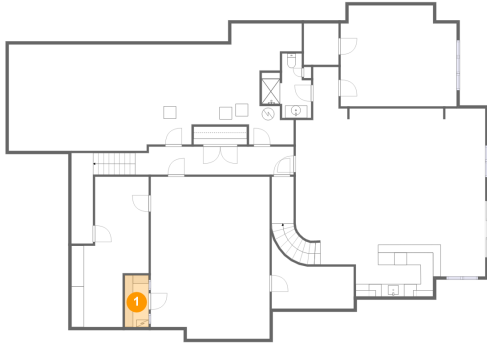
#		Dimensions	sqft	Counted as living area
29	W.I.C.	7'1" x 10'9"	75 sq. ft	Yes
30	Bedroom	13'7" x 17'1"	213 sq. ft	Yes
31	Bedroom	13'7" x 16'10"	221 sq. ft	Yes
32	Bath	4'1" x 8'1"	33 sq. ft	Yes
33	Open To Below	12'0" x 16'10"	158 sq. ft	No
34	W.I.C.	18'10" x 3'1"	54 sq. ft	Yes
35	W.I.C.	8'0" x 8'7"	70 sq. ft	Yes
36	Hall	18'9" x 8'5"	180 sq. ft	Yes
37	Bath	6'2" x 4'10"	30 sq. ft	Yes
38	Bedroom	12'8" x 17'1"	217 sq. ft	Yes
39	Laundry	7'9" x 10'9"	72 sq. ft	Yes

**503 Country Club Ln, Onalaska, WI, US**

#		Dimensions	sqft	Counted as living area
40	Bedroom	24'0" x 17'1"	366 sq. ft	Yes
41	Bath	9'3" x 5'6"	51 sq. ft	Yes
42	Bath	8'3" x 10'8"	75 sq. ft	Yes
43	Bath	6'5" x 4'9"	31 sq. ft	Yes
44	W.I.C.	8'0" x 8'5"	67 sq. ft	Yes
45	Bath	6'10" x 8'1"	53 sq. ft	Yes
46	W.I.C.	6'5" x 7'3"	46 sq. ft	Yes
47	Bedroom	20'3" x 15'5"	247 sq. ft	Yes
48	Open To Below	18'5" x 20'2"	355 sq. ft	No
49	Hall	22'10" x 18'11"	322 sq. ft	Yes

# 503 Country Club Ln, Onalaska, WI, US

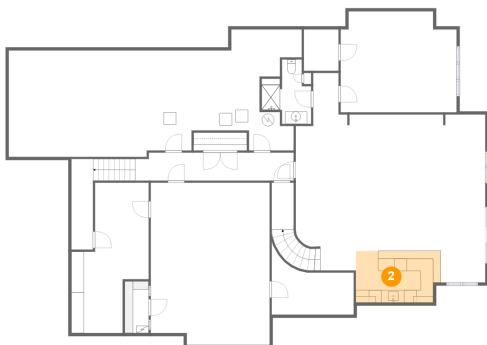
## 1 Floor 1 - Sauna



**Dimensions:** 3'10" x 8'4"  
**Area:** 32 sq. ft  
**Counted as living area:** Yes

**Heated:** Yes  
**Finished:** Yes  
**Enclosed:** Yes  
**Contiguous:** Yes  
**Permitted:** Yes  
**Wet space:** No  
**Addition:** No  
**Conversion:** No

## 2 Floor 1 - Wet Bar

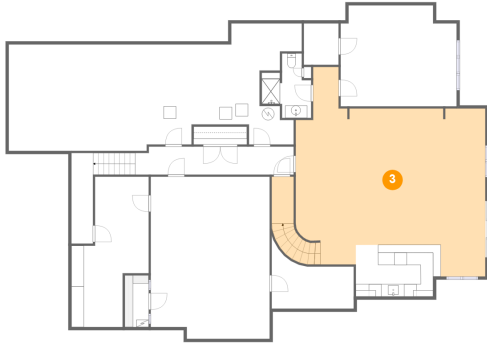


**Dimensions:** 13'8" x 8'3"  
**Area:** 109 sq. ft  
**Counted as living area:** No

**Heated:** Yes  
**Finished:** Yes  
**Enclosed:** Yes  
**Contiguous:** No  
**Permitted:** Yes  
**Wet space:** No  
**Addition:** No  
**Conversion:** No

# 503 Country Club Ln, Onalaska, WI, US

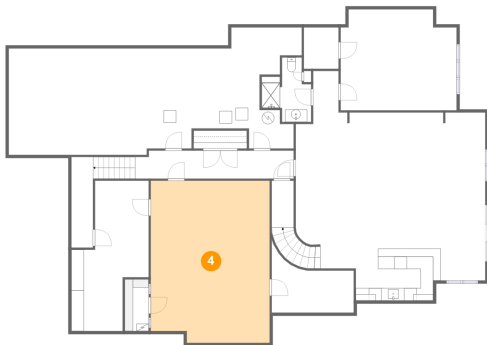
## 3 Floor 1 - Recreation Room



Dimensions: 30'5" x 31'8"  
Area: 793 sq. ft  
Counted as living area: Yes

Heated: Yes  
Finished: Yes  
Enclosed: Yes  
Contiguous: Yes  
Permitted: Yes  
Wet space: No  
Addition: No  
Conversion: No

## 4 Floor 1 - Gym



Dimensions: 19'1" x 26'0"  
Area: 485 sq. ft  
Counted as living area: Yes

Heated: Yes  
Finished: Yes  
Enclosed: Yes  
Contiguous: Yes  
Permitted: Yes  
Wet space: No  
Addition: No  
Conversion: No

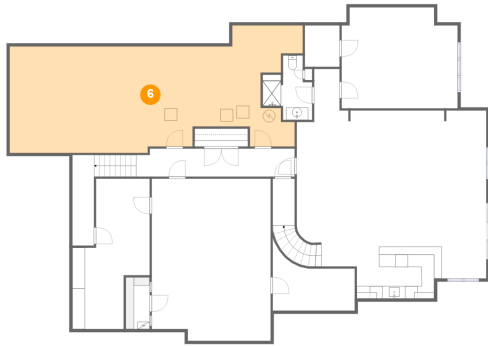
## 5 Floor 1 - W.I.C.



Dimensions: 5'7" x 6'8"  
Area: 37 sq. ft  
Counted as living area: Yes

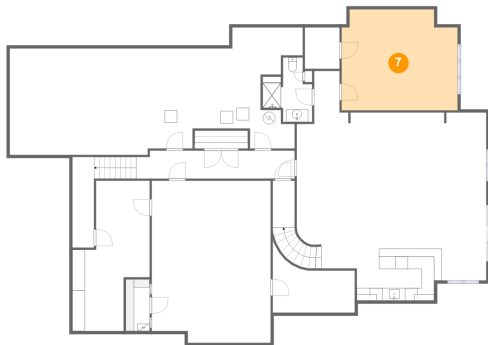
Heated: Yes  
Finished: Yes  
Enclosed: Yes  
Contiguous: Yes  
Permitted: Yes  
Wet space: No  
Addition: No  
Conversion: No



**503 Country Club Ln, Onalaska, WI, US****6 Floor 1 - Storage**

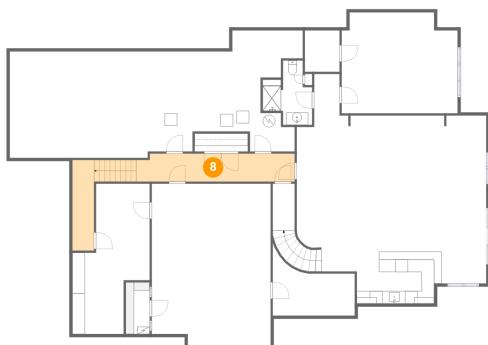
**Dimensions:** 47'1" x 19'5"  
**Area:** 724 sq. ft  
**Counted as living area:** No

**Heated:** No  
**Finished:** No  
**Enclosed:** No  
**Contiguous:** Yes  
**Permitted:** Yes  
**Wet space:** No  
**Addition:** No  
**Conversion:** No

**7 Floor 1 - Bedroom**

**Dimensions:** 18'7" x 16'3"  
**Area:** 287 sq. ft  
**Counted as living area:** Yes

**Heated:** Yes  
**Finished:** Yes  
**Enclosed:** Yes  
**Contiguous:** Yes  
**Permitted:** Yes  
**Wet space:** No  
**Addition:** No  
**Conversion:** No

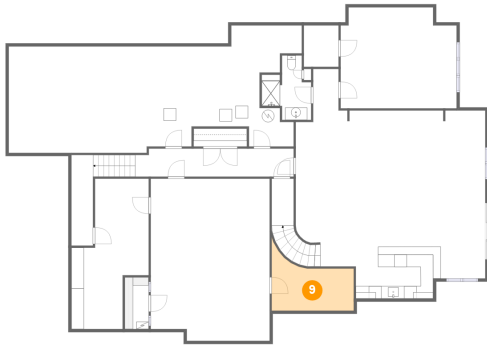
**8 Floor 1 - Hall**

**Dimensions:** 25'5" x 4'6"  
**Area:** 186 sq. ft  
**Counted as living area:** Yes

**Heated:** Yes  
**Finished:** Yes  
**Enclosed:** Yes  
**Contiguous:** Yes  
**Permitted:** Yes  
**Wet space:** No  
**Addition:** No  
**Conversion:** No

# 503 Country Club Ln, Onalaska, WI, US

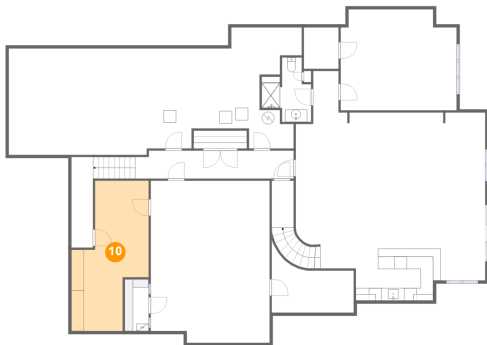
## 9 Floor 1 - Electrical Room



Dimensions: 13'2" x 6'9"  
Area: 97 sq. ft  
Counted as living area: No

Heated: No  
Finished: No  
Enclosed: Yes  
Contiguous: Yes  
Permitted: Yes  
Wet space: No  
Addition: No  
Conversion: No

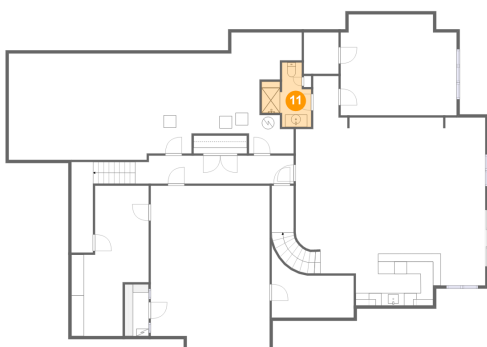
## 10 Floor 1 - Storage



Dimensions: 12'5" x 24'1"  
Area: 221 sq. ft  
Counted as living area: No

Heated: No  
Finished: No  
Enclosed: No  
Contiguous: Yes  
Permitted: Yes  
Wet space: No  
Addition: No  
Conversion: No

## 11 Floor 1 - Bath

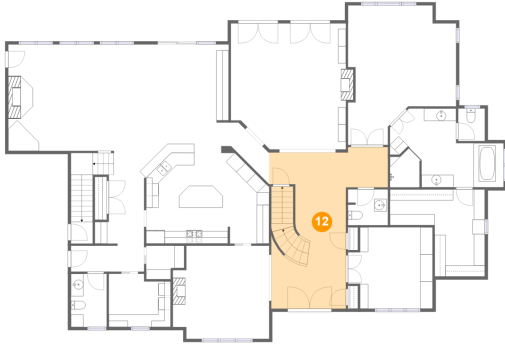


Dimensions: 7'11" x 10'4"  
Area: 58 sq. ft  
Counted as living area: Yes

Heated: Yes  
Finished: Yes  
Enclosed: Yes  
Contiguous: Yes  
Permitted: Yes  
Wet space: Yes  
Addition: No  
Conversion: No

# 503 Country Club Ln, Onalaska, WI, US

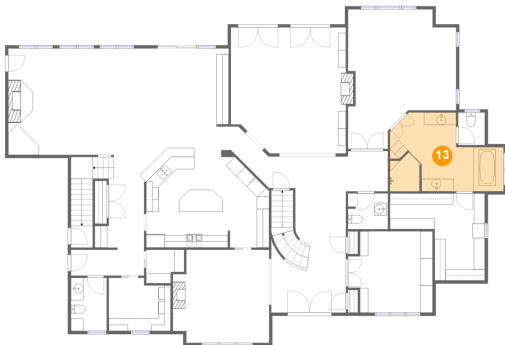
## 12 Floor 2 - Foyer



Dimensions: 19'1" x 25'0"  
Area: 340 sq. ft  
Counted as living area: Yes

Heated: Yes  
Finished: Yes  
Enclosed: Yes  
Contiguous: Yes  
Permitted: Yes  
Wet space: No  
Addition: No  
Conversion: No

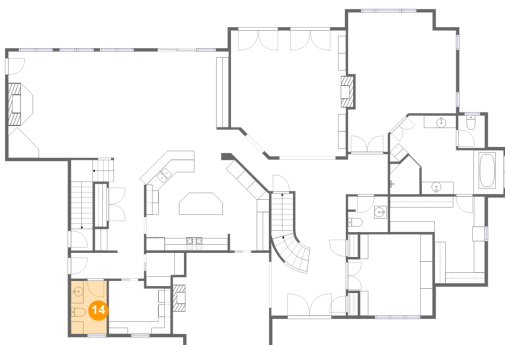
## 13 Floor 2 - Primary Bath



Dimensions: 18'3" x 12'8"  
Area: 181 sq. ft  
Counted as living area: Yes

Heated: Yes  
Finished: Yes  
Enclosed: Yes  
Contiguous: Yes  
Permitted: Yes  
Wet space: Yes  
Addition: No  
Conversion: No

## 14 Floor 2 - WC

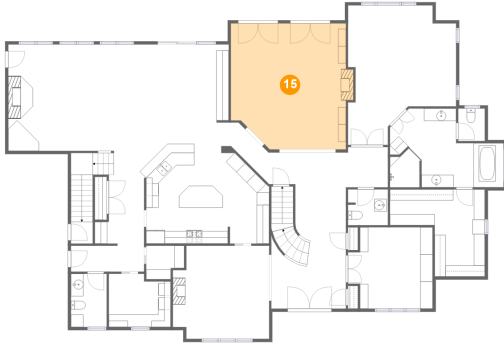


Dimensions: 5'9" x 8'7"  
Area: 49 sq. ft  
Counted as living area: Yes

Heated: Yes  
Finished: Yes  
Enclosed: Yes  
Contiguous: Yes  
Permitted: Yes  
Wet space: Yes  
Addition: No  
Conversion: No

# 503 Country Club Ln, Onalaska, WI, US

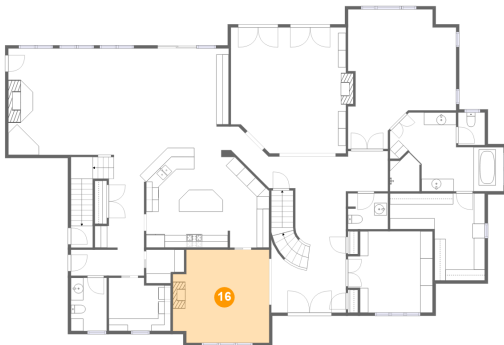
## 15 Floor 2 - Living Room



Dimensions: 18'6" x 20'2"  
Area: 361 sq. ft  
Counted as living area: Yes

Heated: Yes  
Finished: Yes  
Enclosed: Yes  
Contiguous: Yes  
Permitted: Yes  
Wet space: No  
Addition: No  
Conversion: No

## 16 Floor 2 - Dining Room



Dimensions: 15'6" x 14'11"  
Area: 219 sq. ft  
Counted as living area: Yes

Heated: Yes  
Finished: Yes  
Enclosed: Yes  
Contiguous: Yes  
Permitted: Yes  
Wet space: No  
Addition: No  
Conversion: No

## 17 Floor 2 - WC

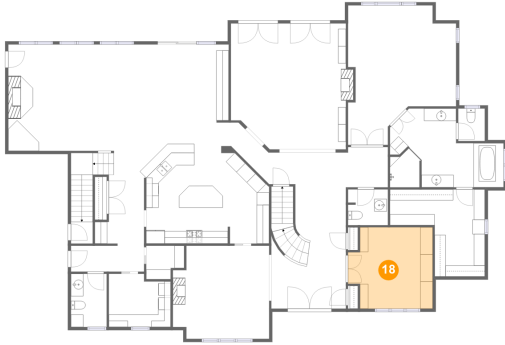


Dimensions: 4'3" x 5'3"  
Area: 22 sq. ft  
Counted as living area: Yes

Heated: Yes  
Finished: Yes  
Enclosed: Yes  
Contiguous: Yes  
Permitted: Yes  
Wet space: Yes  
Addition: No  
Conversion: No

# 503 Country Club Ln, Onalaska, WI, US

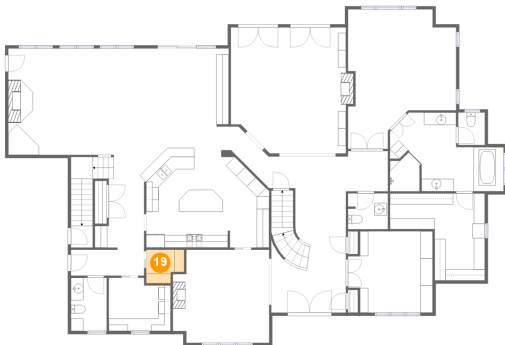
## 18 Floor 2 - Office



Dimensions: 13'7" x 13'0"  
Area: 162 sq. ft  
Counted as living area: Yes

Heated: Yes  
Finished: Yes  
Enclosed: Yes  
Contiguous: Yes  
Permitted: Yes  
Wet space: No  
Addition: No  
Conversion: No

## 19 Floor 2 - Room



Dimensions: 6'1" x 5'5"  
Area: 29 sq. ft  
Counted as living area: Yes

Heated: Yes  
Finished: Yes  
Enclosed: Yes  
Contiguous: Yes  
Permitted: Yes  
Wet space: No  
Addition: No  
Conversion: No

## 20 Floor 2 - Family Room



Dimensions: 21'11" x 17'0"  
Area: 374 sq. ft  
Counted as living area: Yes

Heated: Yes  
Finished: Yes  
Enclosed: Yes  
Contiguous: Yes  
Permitted: Yes  
Wet space: No  
Addition: No  
Conversion: No

# 503 Country Club Ln, Onalaska, WI, US

## 21 Floor 2 - Entry



Dimensions: 11'9" x 4'2"  
Area: 49 sq. ft  
Counted as living area: Yes

Heated: Yes  
Finished: Yes  
Enclosed: Yes  
Contiguous: Yes  
Permitted: Yes  
Wet space: No  
Addition: No  
Conversion: No

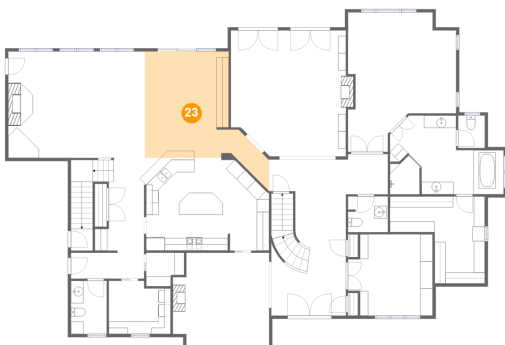
## 22 Floor 2 - WC



Dimensions: 6'5" x 5'9"  
Area: 36 sq. ft  
Counted as living area: Yes

Heated: Yes  
Finished: Yes  
Enclosed: Yes  
Contiguous: Yes  
Permitted: Yes  
Wet space: Yes  
Addition: No  
Conversion: No

## 23 Floor 2 - Breakfast Nook

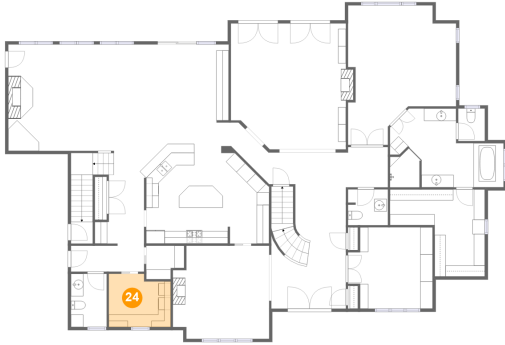


Dimensions: 18'9" x 17'1"  
Area: 260 sq. ft  
Counted as living area: Yes

Heated: Yes  
Finished: Yes  
Enclosed: Yes  
Contiguous: Yes  
Permitted: Yes  
Wet space: No  
Addition: No  
Conversion: No

# 503 Country Club Ln, Onalaska, WI, US

## 24 Floor 2 - Laundry



Dimensions: 9'11" x 8'7"  
Area: 80 sq. ft  
Counted as living area: Yes

Heated: Yes  
Finished: Yes  
Enclosed: Yes  
Contiguous: Yes  
Permitted: Yes  
Wet space: No  
Addition: No  
Conversion: No

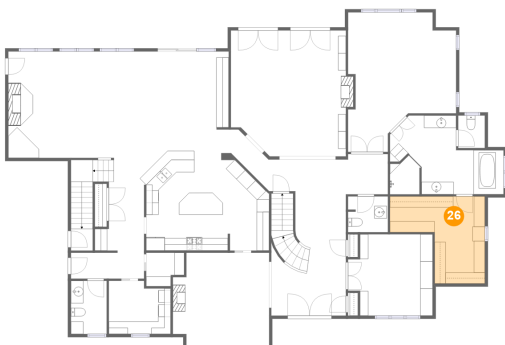
## 25 Floor 2 - Hall



Dimensions: 7'11" x 15'2"  
Area: 155 sq. ft  
Counted as living area: Yes

Heated: Yes  
Finished: Yes  
Enclosed: Yes  
Contiguous: Yes  
Permitted: Yes  
Wet space: No  
Addition: No  
Conversion: No

## 26 Floor 2 - W.I.C.

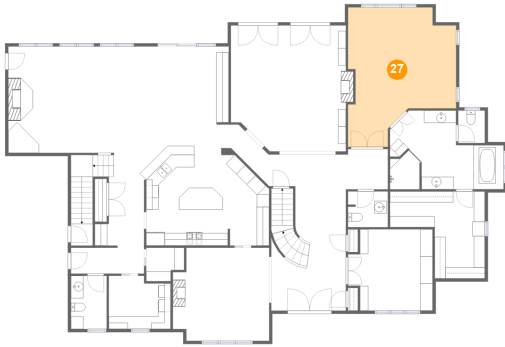


Dimensions: 15'3" x 13'11"  
Area: 154 sq. ft  
Counted as living area: Yes

Heated: Yes  
Finished: Yes  
Enclosed: Yes  
Contiguous: Yes  
Permitted: Yes  
Wet space: No  
Addition: No  
Conversion: No

# 503 Country Club Ln, Onalaska, WI, US

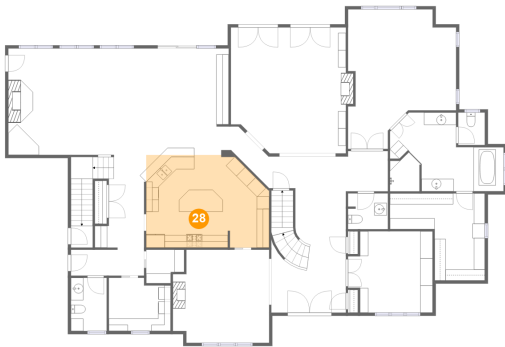
## 27 Floor 2 - Primary Bedroom



Dimensions: 17'4" x 22'5"  
Area: 308 sq. ft  
Counted as living area: Yes

Heated: Yes  
Finished: Yes  
Enclosed: Yes  
Contiguous: Yes  
Permitted: Yes  
Wet space: No  
Addition: No  
Conversion: No

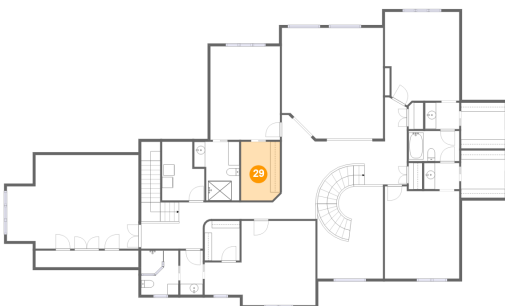
## 28 Floor 2 - Kitchen



Dimensions: 19'9" x 14'10"  
Area: 275 sq. ft  
Counted as living area: Yes

Heated: Yes  
Finished: Yes  
Enclosed: Yes  
Contiguous: Yes  
Permitted: Yes  
Wet space: No  
Addition: No  
Conversion: No

## 29 Floor 3 - W.I.C.



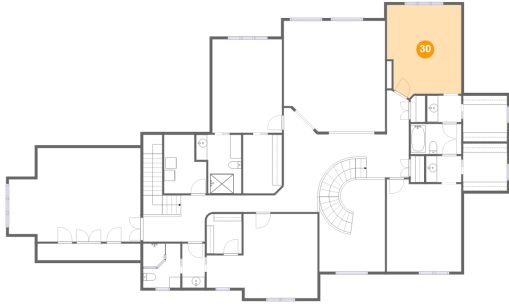
Dimensions: 7'1" x 10'9"  
Area: 75 sq. ft  
Counted as living area: Yes

Heated: Yes  
Finished: Yes  
Enclosed: Yes  
Contiguous: Yes  
Permitted: Yes  
Wet space: No  
Addition: No  
Conversion: No



# 503 Country Club Ln, Onalaska, WI, US

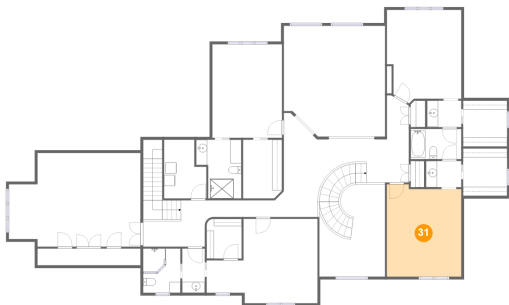
## 30 Floor 3 - Bedroom



Dimensions: 13'7" x 17'1"  
Area: 213 sq. ft  
Counted as living area: Yes

Heated: Yes  
Finished: Yes  
Enclosed: Yes  
Contiguous: Yes  
Permitted: Yes  
Wet space: No  
Addition: No  
Conversion: No

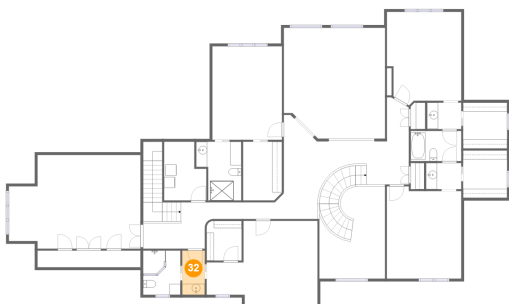
## 31 Floor 3 - Bedroom



Dimensions: 13'7" x 16'10"  
Area: 221 sq. ft  
Counted as living area: Yes

Heated: Yes  
Finished: Yes  
Enclosed: Yes  
Contiguous: Yes  
Permitted: Yes  
Wet space: No  
Addition: No  
Conversion: No

## 32 Floor 3 - Bath



Dimensions: 4'1" x 8'1"  
Area: 33 sq. ft  
Counted as living area: Yes

Heated: Yes  
Finished: Yes  
Enclosed: Yes  
Contiguous: Yes  
Permitted: Yes  
Wet space: Yes  
Addition: No  
Conversion: No

# 503 Country Club Ln, Onalaska, WI, US

## 33 Floor 3 - Open To Below



Dimensions: 12'0" x 16'10"  
Area: 158 sq. ft  
Counted as living area: No

Heated: No  
Finished: No  
Enclosed: No  
Contiguous: Yes  
Permitted: No  
Wet space: No  
Addition: No  
Conversion: No

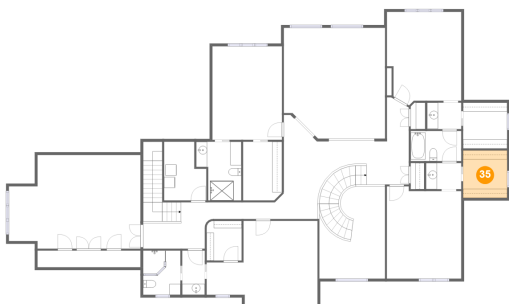
## 34 Floor 3 - W.I.C.



Dimensions: 18'10" x 3'1"  
Area: 54 sq. ft  
Counted as living area: Yes

Heated: Yes  
Finished: Yes  
Enclosed: Yes  
Contiguous: Yes  
Permitted: Yes  
Wet space: No  
Addition: No  
Conversion: No

## 35 Floor 3 - W.I.C.

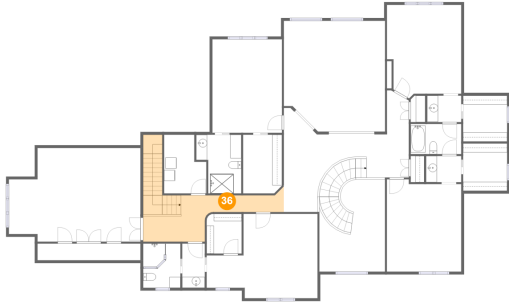


Dimensions: 8'0" x 8'7"  
Area: 70 sq. ft  
Counted as living area: Yes

Heated: Yes  
Finished: Yes  
Enclosed: Yes  
Contiguous: Yes  
Permitted: Yes  
Wet space: No  
Addition: No  
Conversion: No

# 503 Country Club Ln, Onalaska, WI, US

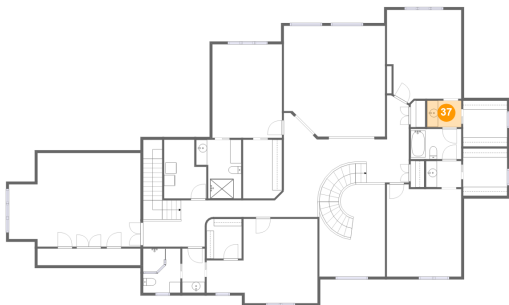
## 36 Floor 3 - Hall



Dimensions: 18'9" x 8'5"  
Area: 180 sq. ft  
Counted as living area: Yes

Heated: Yes  
Finished: Yes  
Enclosed: Yes  
Contiguous: Yes  
Permitted: Yes  
Wet space: No  
Addition: No  
Conversion: No

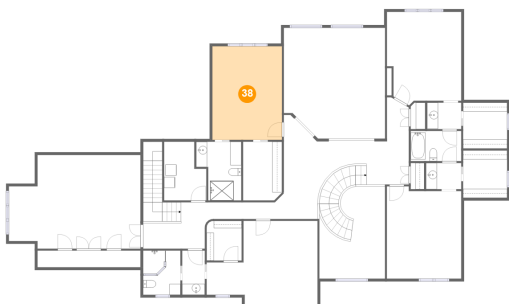
## 37 Floor 3 - Bath



Dimensions: 6'2" x 4'10"  
Area: 30 sq. ft  
Counted as living area: Yes

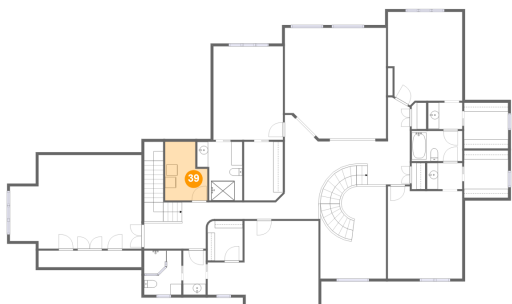
Heated: Yes  
Finished: Yes  
Enclosed: Yes  
Contiguous: Yes  
Permitted: Yes  
Wet space: Yes  
Addition: No  
Conversion: No

## 38 Floor 3 - Bedroom



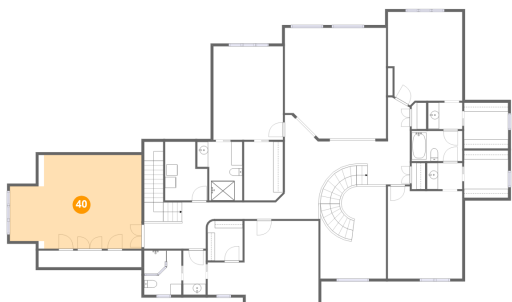
Dimensions: 12'8" x 17'1"  
Area: 217 sq. ft  
Counted as living area: Yes

Heated: Yes  
Finished: Yes  
Enclosed: Yes  
Contiguous: Yes  
Permitted: Yes  
Wet space: No  
Addition: No  
Conversion: No

**503 Country Club Ln, Onalaska, WI, US****39 Floor 3 - Laundry**

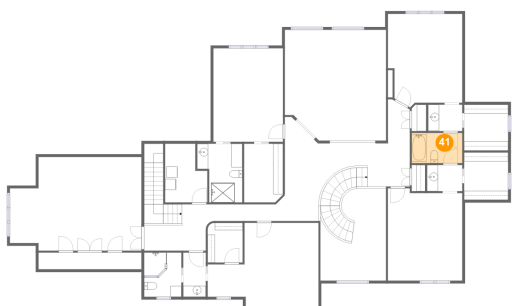
Dimensions: 7'9" x 10'9"  
Area: 72 sq. ft  
Counted as living area: Yes

Heated: Yes  
Finished: Yes  
Enclosed: Yes  
Contiguous: Yes  
Permitted: Yes  
Wet space: No  
Addition: No  
Conversion: No

**40 Floor 3 - Bedroom**

Dimensions: 24'0" x 17'1"  
Area: 366 sq. ft  
Counted as living area: Yes

Heated: Yes  
Finished: Yes  
Enclosed: Yes  
Contiguous: Yes  
Permitted: Yes  
Wet space: No  
Addition: No  
Conversion: No

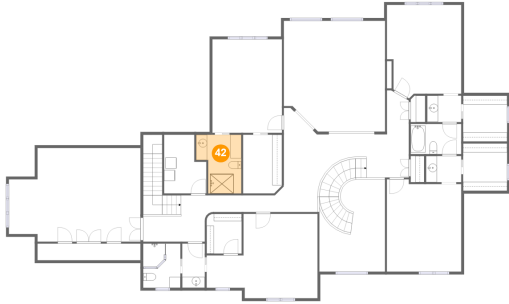
**41 Floor 3 - Bath**

Dimensions: 9'3" x 5'6"  
Area: 51 sq. ft  
Counted as living area: Yes

Heated: Yes  
Finished: Yes  
Enclosed: Yes  
Contiguous: Yes  
Permitted: Yes  
Wet space: Yes  
Addition: No  
Conversion: No

# 503 Country Club Ln, Onalaska, WI, US

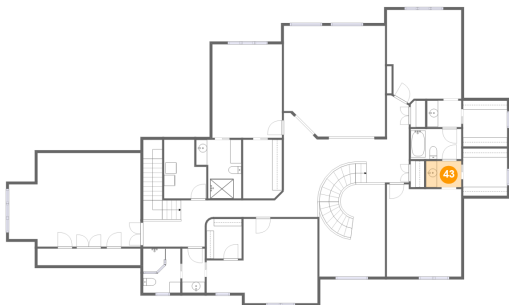
## 42 Floor 3 - Bath



Dimensions: 8'3" x 10'8"  
Area: 75 sq. ft  
Counted as living area: Yes

Heated: Yes  
Finished: Yes  
Enclosed: Yes  
Contiguous: Yes  
Permitted: Yes  
Wet space: Yes  
Addition: No  
Conversion: No

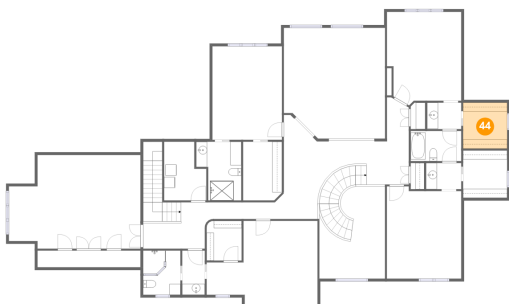
## 43 Floor 3 - Bath



Dimensions: 6'5" x 4'9"  
Area: 31 sq. ft  
Counted as living area: Yes

Heated: Yes  
Finished: Yes  
Enclosed: Yes  
Contiguous: Yes  
Permitted: Yes  
Wet space: Yes  
Addition: No  
Conversion: No

## 44 Floor 3 - W.I.C.



Dimensions: 8'0" x 8'5"  
Area: 67 sq. ft  
Counted as living area: Yes

Heated: Yes  
Finished: Yes  
Enclosed: Yes  
Contiguous: Yes  
Permitted: Yes  
Wet space: No  
Addition: No  
Conversion: No

# 503 Country Club Ln, Onalaska, WI, US

## 45 Floor 3 - Bath



Dimensions: 6'10" x 8'1"  
Area: 53 sq. ft  
Counted as living area: Yes

Heated: Yes  
Finished: Yes  
Enclosed: Yes  
Contiguous: Yes  
Permitted: Yes  
Wet space: Yes  
Addition: No  
Conversion: No

## 46 Floor 3 - W.I.C.



Dimensions: 6'5" x 7'3"  
Area: 46 sq. ft  
Counted as living area: Yes

Heated: Yes  
Finished: Yes  
Enclosed: Yes  
Contiguous: Yes  
Permitted: Yes  
Wet space: No  
Addition: No  
Conversion: No

## 47 Floor 3 - Bedroom

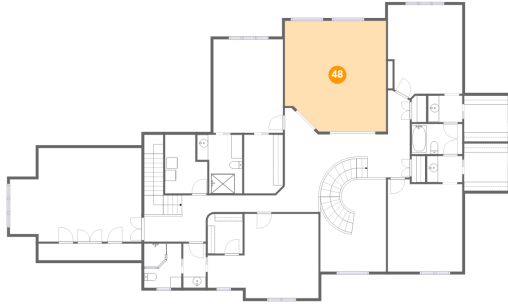


Dimensions: 20'3" x 15'5"  
Area: 247 sq. ft  
Counted as living area: Yes

Heated: Yes  
Finished: Yes  
Enclosed: Yes  
Contiguous: Yes  
Permitted: Yes  
Wet space: No  
Addition: No  
Conversion: No

# 503 Country Club Ln, Onalaska, WI, US

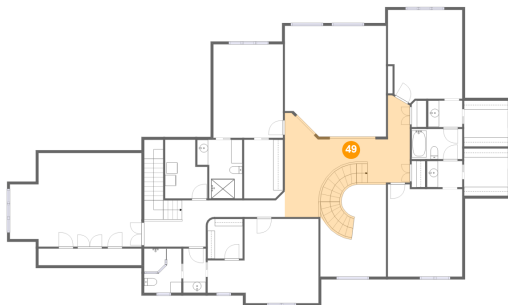
## 48 Floor 3 - Open To Below



Dimensions: 18'5" x 20'2"  
Area: 355 sq. ft  
Counted as living area: No

Heated: No  
Finished: No  
Enclosed: No  
Contiguous: Yes  
Permitted: No  
Wet space: No  
Addition: No  
Conversion: No

## 49 Floor 3 - Hall



Dimensions: 22'10" x 18'11"  
Area: 322 sq. ft  
Counted as living area: Yes

Heated: Yes  
Finished: Yes  
Enclosed: Yes  
Contiguous: Yes  
Permitted: Yes  
Wet space: No  
Addition: No  
Conversion: No