



**BERKSHIRE
HATHAWAY**
HOMESERVICES

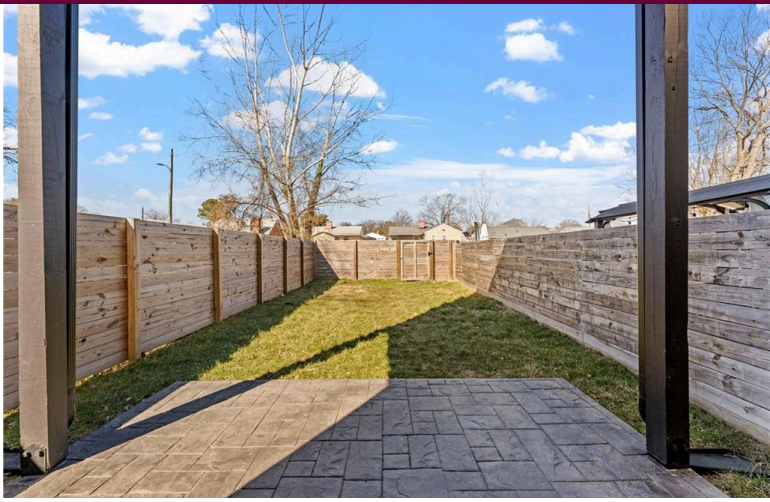
PENFED
REALTY



1612 North 28th Street
Richmond, VA 23223

OFFERED AT
\$400,000





JUST LISTED IN RVA'S GROWING NORTH CHURCH HILL NEIGHBORHOOD!

BEDROOMS

3

BATHROOMS

2.5

SQUARE FEET

1,479

OFFERED AT

\$400,000

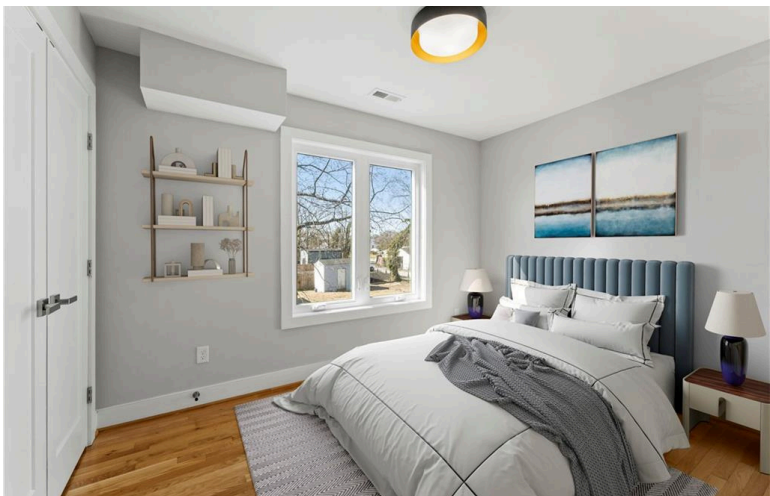
MLS # 2502387

LOT SIZE - .06 ACRES

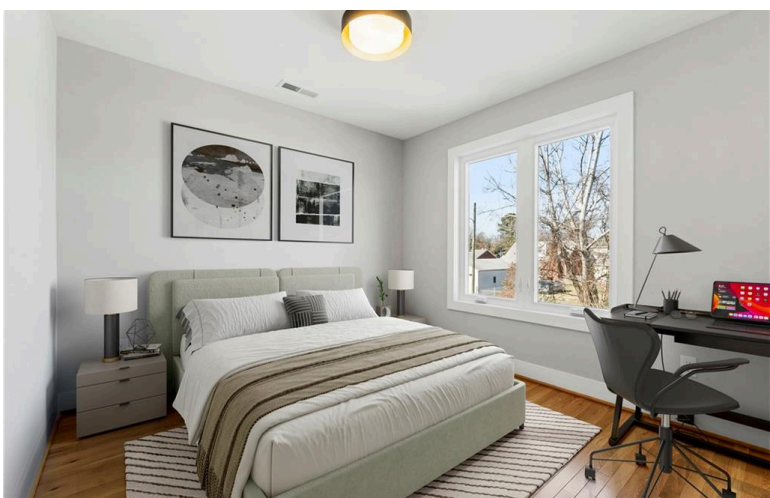


This move-in ready modern style home was built in 2021 by local builder, Augustine Construction. Upon entering the home you are greeted with custom concrete floors, high ceilings, recessed lighting & exposed steel ductwork throughout the first level.

The stunning chef's kitchen has a huge center island with quartz counters, white shaker cabinets, a subway tile backsplash, and stainless steel appliances, including a gas range with an oven hood. The open layout flows right into the bright living room, where a wall of windows lets in tons of natural light and offers a great view of the private backyard and covered patio.



The home's second floor has hardwood floors and is highlighted with a primary bedroom suite with step-in tiled shower and glass frameless door. This level of the home is completed with 2nd-floor laundry room, 2 additional bedrooms, a shared hallway bathroom & features a one-of-a-kind internal balcony looking down to the kitchen area.



The landscaped exterior of the home has Hadiplank cement siding w/ high-efficiency vinyl windows and a fully fenced backyard that is perfect for entertaining family, friends or your favorite pet. There is ample parking with both on-street parking to the front of the home and 2 private off-street gravel parking spots from the alley. Within walking distance to The Market at 25th and local schools. Only minutes to public parks & endless local dining options. Only 7 minutes to downtown and VCU Health's main hospital.



Aaron Gilbert, REALTOR®

Berkshire Hathaway HomeServices PenFed Realty

Text or Call: 804-868-0080

Aaron@PenFedRealty.com

RVAExpert.com

2737 McRae Road, North Chesterfield, VA 23235

