

Home report

733 Gearhart Ave,Crestline,OH,US




Total Area: 2082 sq. ft

Below Ground: 782 sq. ft, Floor 2: 1300 sq. ft


Excluded: Utility 325 sq. ft, Deck 392 sq. ft, Garage 453 sq. ft, Walls: 180 sq. ft

Property summary

 **2** Floors

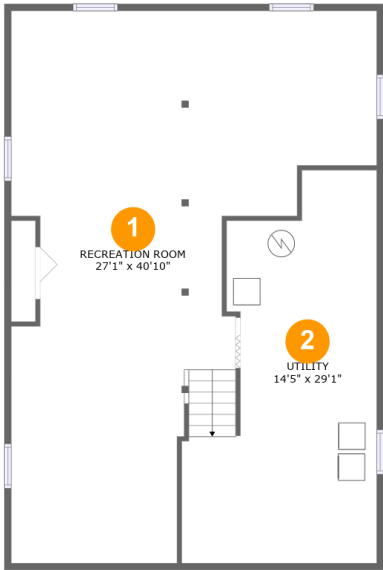
 **2** Bedrooms

 **2** Bathrooms

 **1** Garages

Home report

733 Gearhart Ave,Crestline,OH,US



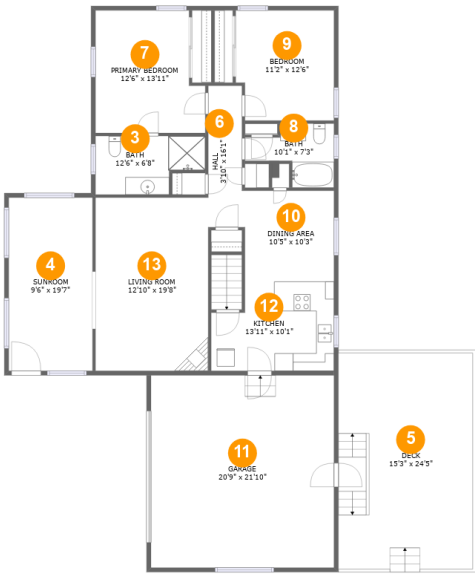
Room dimensions

Floor 1 Below ground Total:782sqft Excluded: 325sqft

#		Max Dimensions	sqft	Included
1	Recreation Room	27'1" x 40'10"	749 sq. ft	Yes
2	Utility	14'5" x 29'1"	325 sq. ft	No

Home report

733 Gearhart Ave,Crestline,OH,US

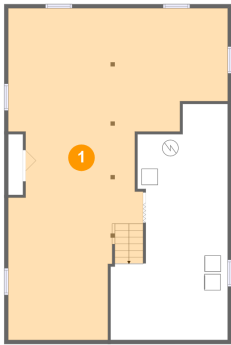


Room dimensions

Floor 2 Total:1300sqft Excluded: 845sqft

#		Max Dimensions	sqft	Included
3	Bath	12'6" x 6'8"	71 sq. ft	Yes
4	Sunroom	9'6" x 19'7"	187 sq. ft	Yes
5	Deck	15'3" x 24'5"	392 sq. ft	No
6	Hall	3'10" x 16'1"	61 sq. ft	Yes
7	Primary Bedroom	12'6" x 13'11"	158 sq. ft	Yes
8	Bath	10'1" x 7'3"	51 sq. ft	Yes
9	Bedroom	11'2" x 12'6"	135 sq. ft	Yes
10	Dining Area	10'5" x 10'3"	106 sq. ft	Yes
11	Garage	20'9" x 21'10"	453 sq. ft	No
12	Kitchen	13'11" x 10'1"	127 sq. ft	Yes
13	Living Room	12'10" x 19'8"	251 sq. ft	Yes

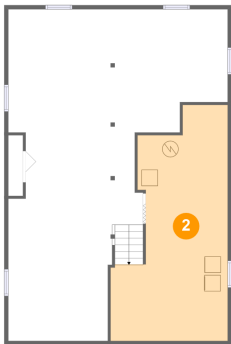
1 Floor 1 - Recreation Room



Max Dimensions: 27'1" x 40'10"
Calculated Area: 749 sq. ft
Included: Yes

Heated: Yes
Finished: Yes
Enclosed: Yes
Contiguous: Yes
Permitted: Yes
Wet space: No
Addition: No
Conversion: No

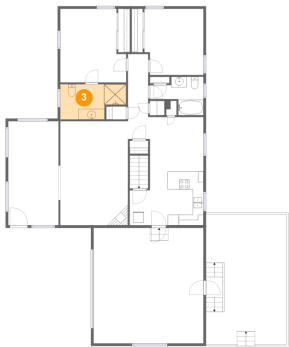
2 Floor 1 - Utility



Max Dimensions: 14'5" x 29'1"
Calculated Area: 325 sq. ft
Included: No

Heated: Yes
Finished: No
Enclosed: Yes
Contiguous: Yes
Permitted: Yes
Wet space: No
Addition: No
Conversion: No

3 Floor 2 - Bath



Max Dimensions: 12'6" x 6'8"
Calculated Area: 71 sq. ft
Included: Yes

Heated: Yes
Finished: Yes
Enclosed: Yes
Contiguous: Yes
Permitted: Yes
Wet space: Yes
Addition: No
Conversion: No

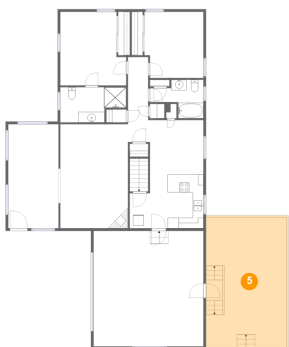
4 Floor 2 - Sunroom



Max Dimensions: 9'6" x 19'7"
Calculated Area: 187 sq. ft
Included: Yes

Heated: Yes
Finished: Yes
Enclosed: Yes
Contiguous: Yes
Permitted: Yes
Wet space: No
Addition: No
Conversion: No

5 Floor 2 - Deck



Max Dimensions: 15'3" x 24'5"
Calculated Area: 392 sq. ft
Included: No

Heated: No
Finished: Yes
Enclosed: No
Contiguous: Yes
Permitted: Yes
Wet space: No
Addition: No
Conversion: No

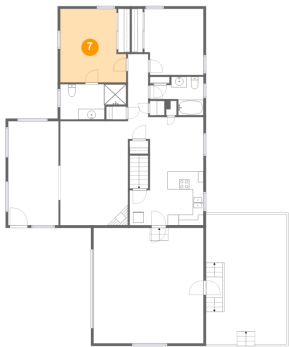
6 Floor 2 - Hall



Max Dimensions: 3'10" x 16'1"
Calculated Area: 61 sq. ft
Included: Yes

Heated: Yes
Finished: Yes
Enclosed: Yes
Contiguous: Yes
Permitted: Yes
Wet space: No
Addition: No
Conversion: No

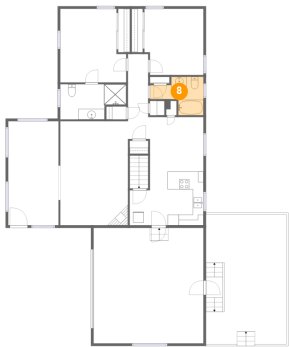
7 Floor 2 - Primary Bedroom



Max Dimensions: 12'6" x 13'11"
Calculated Area: 158 sq. ft
Included: Yes

Heated: Yes
Finished: Yes
Enclosed: Yes
Contiguous: Yes
Permitted: Yes
Wet space: No
Addition: No
Conversion: No

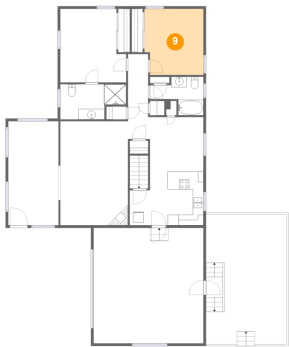
8 Floor 2 - Bath



Max Dimensions: 10'1" x 7'3"
Calculated Area: 51 sq. ft
Included: Yes

Heated: Yes
Finished: Yes
Enclosed: Yes
Contiguous: Yes
Permitted: Yes
Wet space: Yes
Addition: No
Conversion: No

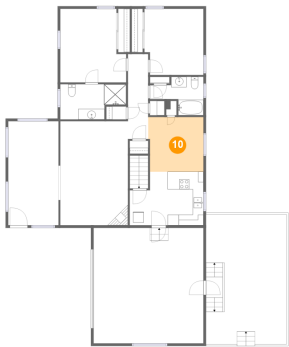
9 Floor 2 - Bedroom



Max Dimensions: 11'2" x 12'6"
Calculated Area: 135 sq. ft
Included: Yes

Heated: Yes
Finished: Yes
Enclosed: Yes
Contiguous: Yes
Permitted: Yes
Wet space: No
Addition: No
Conversion: No

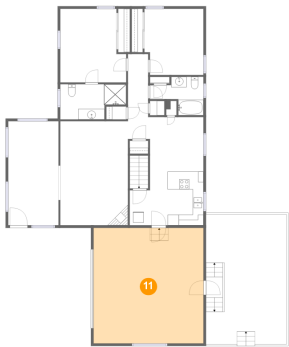
10 Floor 2 - Dining Area



Max Dimensions: 10'5" x 10'3"
Calculated Area: 106 sq. ft
Included: Yes

Heated: Yes
Finished: Yes
Enclosed: Yes
Contiguous: Yes
Permitted: Yes
Wet space: No
Addition: No
Conversion: No

11 Floor 2 - Garage



Max Dimensions: 20'9" x 21'10"
Calculated Area: 453 sq. ft
Included: No

Heated: No
Finished: No
Enclosed: Yes
Contiguous: Yes
Permitted: Yes
Wet space: No
Addition: No
Conversion: No

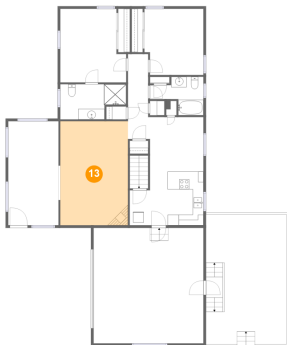
12 Floor 2 - Kitchen



Max Dimensions: 13'11" x 10'1"
Calculated Area: 127 sq. ft
Included: Yes

Heated: Yes
Finished: Yes
Enclosed: Yes
Contiguous: Yes
Permitted: Yes
Wet space: No
Addition: No
Conversion: No

13 Floor 2 - Living Room



Max Dimensions: 12'10" x 19'8"
Calculated Area: 251 sq. ft
Included: Yes

Heated: Yes
Finished: Yes
Enclosed: Yes
Contiguous: Yes
Permitted: Yes
Wet space: No
Addition: No
Conversion: No