

Home data report

290 Glenwood Drive,Ambridge,PA,US




Total Area: 2115 sq. ft

Below Ground: 0 sq. ft, 1st Floor: 809 sq. ft, 2nd Floor: 747 sq. ft, 3rd Floor: 559 sq. ft  
Excluded: Basement 642 sq. ft, Bath 71 sq. ft, Porch 219 sq. ft, Covered deck 77 sq. ft, Walls: 229 sq. ft

Property summary

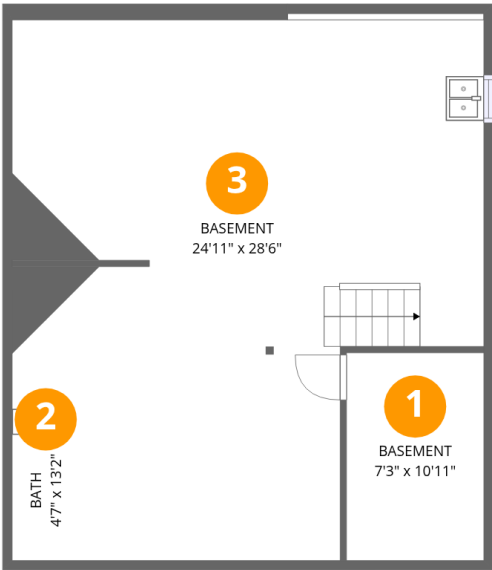
 **4** Floors

 **4** Bedrooms

 **2** Bathrooms

Home data report

290 Glenwood Drive,Ambridge,PA,US



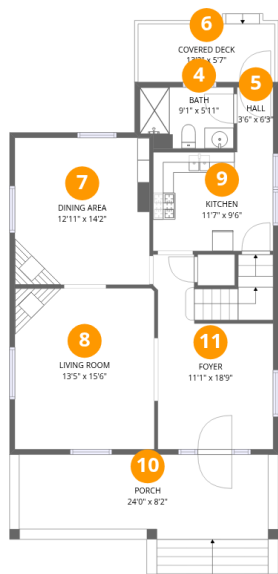
Room dimensions

Floor 1 Below grade Total:0sqft    Excluded: 713sqft

#		Dimensions	sqft	Counted as living area
1	Basement	7'3" x 10'11"	79 sq. ft	No
2	Bath	4'7" x 13'2"	71 sq. ft	No
3	Basement	24'11" x 28'6"	554 sq. ft	No

Home data report

290 Glenwood Drive,Ambridge,PA,US



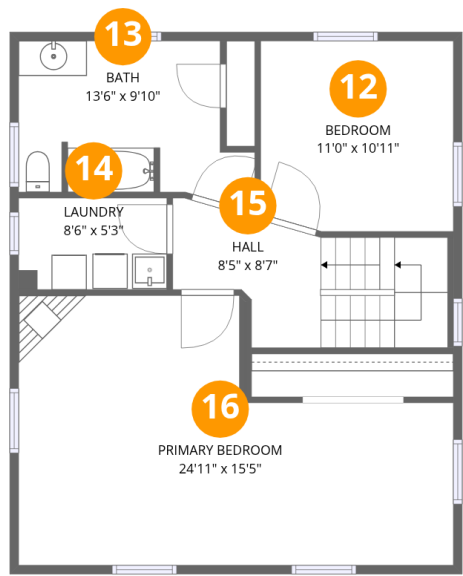
Room dimensions

Floor 2 Total:809sqft Excluded: 296sqft

#		Dimensions	sqft	Counted as living area
4	Bath	9'1" x 5'11"	52 sq. ft	Yes
5	Hall	3'6" x 6'3"	22 sq. ft	Yes
6	Covered Deck	13'2" x 5'7"	77 sq. ft	No
7	Dining Area	12'11" x 14'2"	184 sq. ft	Yes
8	Living Room	13'5" x 15'6"	209 sq. ft	Yes
9	Kitchen	11'7" x 9'6"	110 sq. ft	Yes
10	Porch	24'0" x 8'2"	219 sq. ft	No
11	Foyer	11'1" x 18'9"	193 sq. ft	Yes

Home data report

290 Glenwood Drive,Ambridge,PA,US



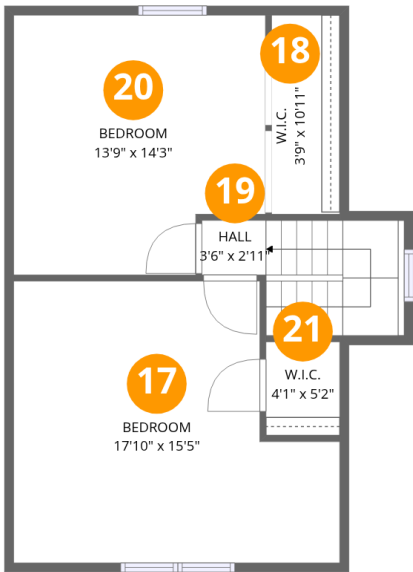
Room dimensions

Floor 3 Total:747sqft Excluded: 0sqft

#		Dimensions	sqft	Counted as living area
12	Bedroom	11'0" x 10'11"	119 sq. ft	Yes
13	Bath	13'6" x 9'10"	105 sq. ft	Yes
14	Laundry	8'6" x 5'3"	45 sq. ft	Yes
15	Hall	8'5" x 8'7"	97 sq. ft	Yes
16	Primary Bedroom	24'11" x 15'5"	311 sq. ft	Yes

Home data report

290 Glenwood Drive,Ambridge,PA,US

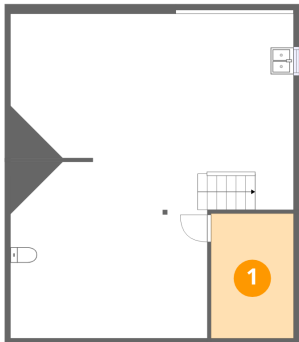


Room dimensions

Floor 4 Total:559sqft   Excluded: 0sqft

#		Dimensions	sqft	Counted as living area
17	Bedroom	17'10" x 15'5"	237 sq. ft	Yes
18	W.I.C.	3'9" x 10'11"	41 sq. ft	Yes
19	Hall	3'6" x 2'11"	58 sq. ft	Yes
20	Bedroom	13'9" x 14'3"	184 sq. ft	Yes
21	W.I.C.	4'1" x 5'2"	21 sq. ft	Yes

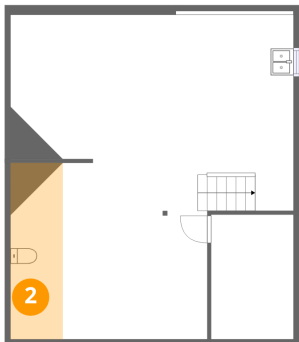
1 Floor 1 - Basement



Dimensions: 7'3" x 10'11"  
Area: 79 sq. ft  
Counted as living area: No

Heated: Yes  
Finished: No  
Enclosed: Yes  
Contiguous: Yes  
Permitted: Yes  
Wet space: No  
Addition: No  
Conversion: No

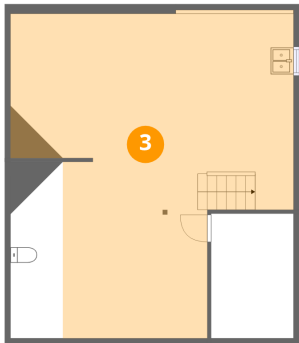
2 Floor 1 - Bath



Dimensions: 4'7" x 13'2"  
Area: 71 sq. ft  
Counted as living area: No

Heated: Yes  
Finished: No  
Enclosed: Yes  
Contiguous: Yes  
Permitted: Yes  
Wet space: Yes  
Addition: No  
Conversion: No

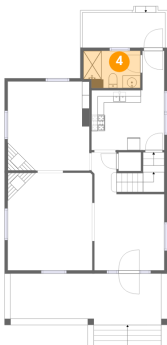
3 Floor 1 - Basement



Dimensions: 24'11" x 28'6"  
Area: 554 sq. ft  
Counted as living area: No

Heated: Yes  
Finished: No  
Enclosed: Yes  
Contiguous: Yes  
Permitted: Yes  
Wet space: No  
Addition: No  
Conversion: No

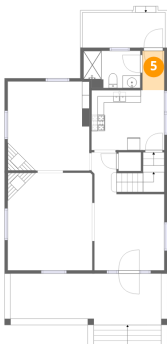
4 Floor 2 - Bath



Dimensions: 9'1" x 5'11"  
Area: 52 sq. ft  
Counted as living area: Yes

Heated: Yes  
Finished: Yes  
Enclosed: Yes  
Contiguous: Yes  
Permitted: Yes  
Wet space: Yes  
Addition: No  
Conversion: No

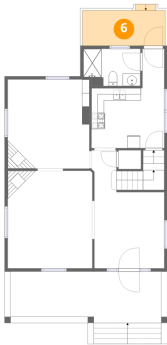
5 Floor 2 - Hall



Dimensions: 3'6" x 6'3"  
Area: 22 sq. ft  
Counted as living area: Yes

Heated: Yes  
Finished: Yes  
Enclosed: Yes  
Contiguous: Yes  
Permitted: Yes  
Wet space: No  
Addition: No  
Conversion: No

6 Floor 2 - Covered Deck



Dimensions: 13'2" x 5'7"  
Area: 77 sq. ft  
Counted as living area: No

Heated: No  
Finished: No  
Enclosed: No  
Contiguous: Yes  
Permitted: Yes  
Wet space: No  
Addition: No  
Conversion: No

7 Floor 2 - Dining Area



Dimensions: 12'11" x 14'2"  
Area: 184 sq. ft  
Counted as living area: Yes

Heated: Yes  
Finished: Yes  
Enclosed: Yes  
Contiguous: Yes  
Permitted: Yes  
Wet space: No  
Addition: No  
Conversion: No

8 Floor 2 - Living Room



Dimensions: 13'5" x 15'6"  
Area: 209 sq. ft  
Counted as living area: Yes

Heated: Yes  
Finished: Yes  
Enclosed: Yes  
Contiguous: Yes  
Permitted: Yes  
Wet space: No  
Addition: No  
Conversion: No



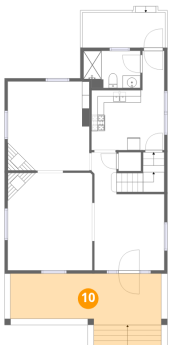
9 Floor 2 - Kitchen



Dimensions: 11'7" x 9'6"  
Area: 110 sq. ft  
Counted as living area: Yes

Heated: Yes  
Finished: Yes  
Enclosed: Yes  
Contiguous: Yes  
Permitted: Yes  
Wet space: No  
Addition: No  
Conversion: No

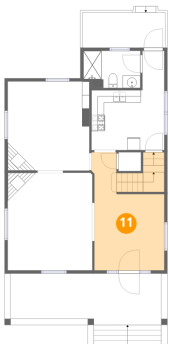
10 Floor 2 - Porch



Dimensions: 24'0" x 8'2"  
Area: 219 sq. ft  
Counted as living area: No

Heated: No  
Finished: No  
Enclosed: No  
Contiguous: Yes  
Permitted: Yes  
Wet space: No  
Addition: No  
Conversion: No

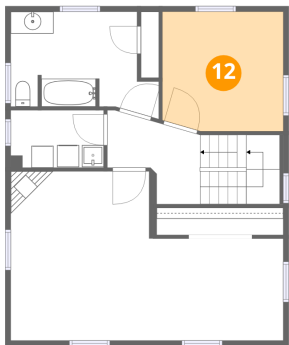
11 Floor 2 - Foyer



Dimensions: 11'1" x 18'9"  
Area: 193 sq. ft  
Counted as living area: Yes

Heated: Yes  
Finished: Yes  
Enclosed: Yes  
Contiguous: Yes  
Permitted: Yes  
Wet space: No  
Addition: No  
Conversion: No

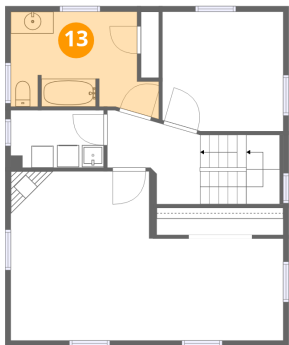
12 Floor 3 - Bedroom



Dimensions: 11'0" x 10'11"  
Area: 119 sq. ft  
Counted as living area: Yes

Heated: Yes  
Finished: Yes  
Enclosed: Yes  
Contiguous: Yes  
Permitted: Yes  
Wet space: No  
Addition: No  
Conversion: No

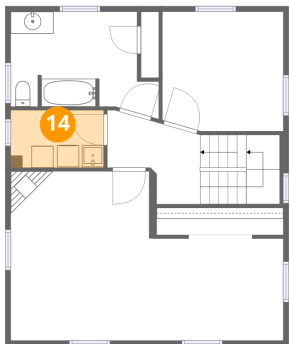
13 Floor 3 - Bath



Dimensions: 13'6" x 9'10"  
Area: 105 sq. ft  
Counted as living area: Yes

Heated: Yes  
Finished: Yes  
Enclosed: Yes  
Contiguous: Yes  
Permitted: Yes  
Wet space: Yes  
Addition: No  
Conversion: No

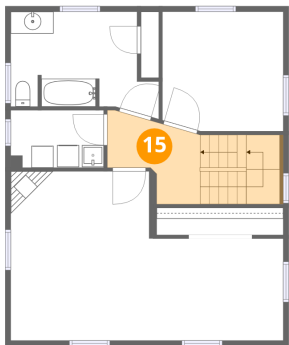
14 Floor 3 - Laundry



Dimensions: 8'6" x 5'3"  
Area: 45 sq. ft  
Counted as living area: Yes

Heated: Yes  
Finished: Yes  
Enclosed: Yes  
Contiguous: Yes  
Permitted: Yes  
Wet space: No  
Addition: No  
Conversion: No

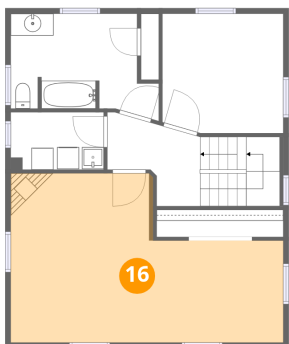
15 Floor 3 - Hall



Dimensions: 8'5" x 8'7"  
Area: 97 sq. ft  
Counted as living area: Yes

Heated: Yes  
Finished: Yes  
Enclosed: Yes  
Contiguous: Yes  
Permitted: Yes  
Wet space: No  
Addition: No  
Conversion: No

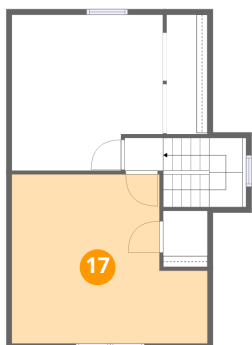
16 Floor 3 - Primary Bedroom



Dimensions: 24'11" x 15'5"  
Area: 311 sq. ft  
Counted as living area: Yes

Heated: Yes  
Finished: Yes  
Enclosed: Yes  
Contiguous: Yes  
Permitted: Yes  
Wet space: No  
Addition: No  
Conversion: No

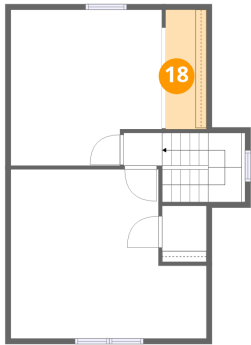
17 Floor 4 - Bedroom



Dimensions: 17'10" x 15'5"  
Area: 237 sq. ft  
Counted as living area: Yes

Heated: Yes  
Finished: Yes  
Enclosed: Yes  
Contiguous: Yes  
Permitted: Yes  
Wet space: No  
Addition: No  
Conversion: No

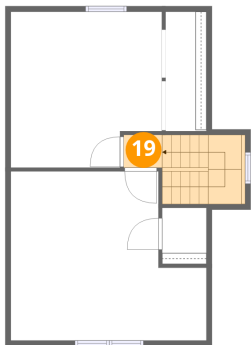
18 Floor 4 - W.I.C.



Dimensions: 3'9" x 10'11"  
Area: 41 sq. ft  
Counted as living area: Yes

Heated: Yes  
Finished: Yes  
Enclosed: Yes  
Contiguous: Yes  
Permitted: Yes  
Wet space: No  
Addition: No  
Conversion: No

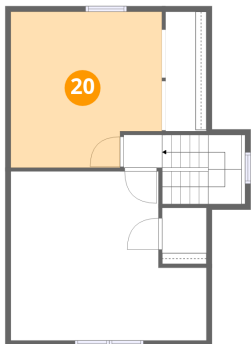
19 Floor 4 - Hall



Dimensions: 3'6" x 2'11"  
Area: 58 sq. ft  
Counted as living area: Yes

Heated: Yes  
Finished: Yes  
Enclosed: Yes  
Contiguous: Yes  
Permitted: Yes  
Wet space: No  
Addition: No  
Conversion: No

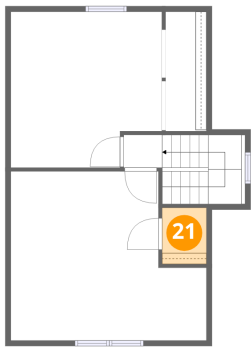
20 Floor 4 - Bedroom



Dimensions: 13'9" x 14'3"  
Area: 184 sq. ft  
Counted as living area: Yes

Heated: Yes  
Finished: Yes  
Enclosed: Yes  
Contiguous: Yes  
Permitted: Yes  
Wet space: No  
Addition: No  
Conversion: No

21 Floor 4 - W.I.C.



Dimensions: 4'1" x 5'2"  
Area: 21 sq. ft  
Counted as living area: Yes

Heated: Yes  
Finished: Yes  
Enclosed: Yes  
Contiguous: Yes  
Permitted: Yes  
Wet space: No  
Addition: No  
Conversion: No