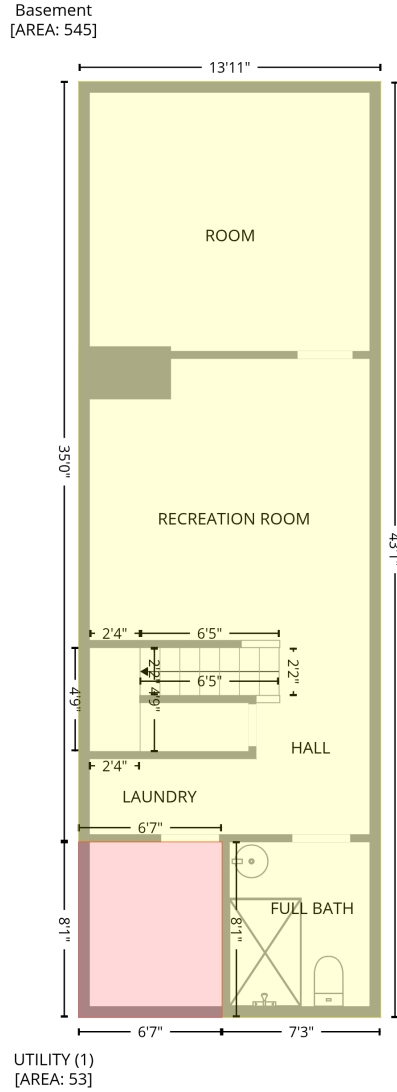


159 Ranleigh Avenue, Toronto, Ontario M4N 1X2, Canada

Gross Living Area: 1100 sq. ft

Level 1 - Below Grade

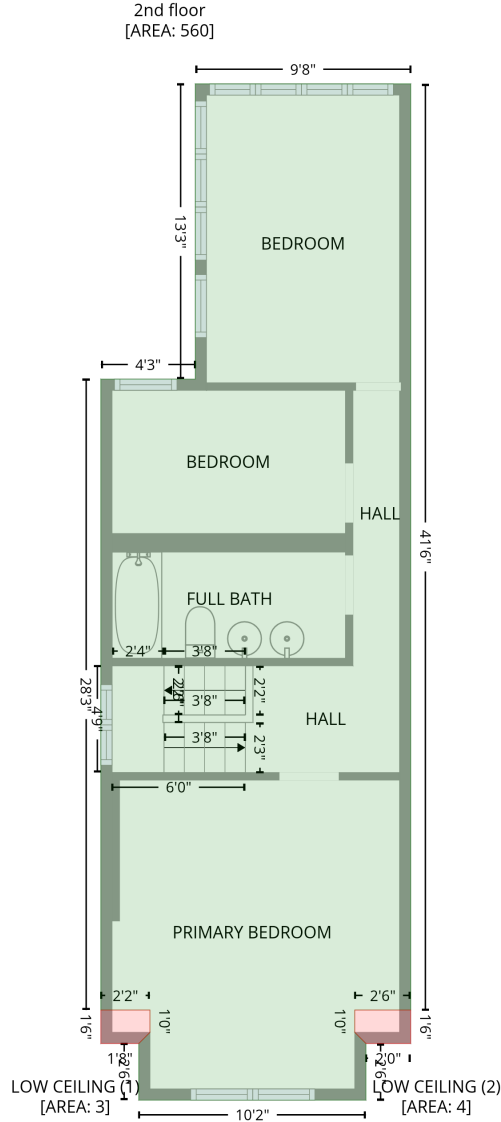


Space	Area (sq. ft)	Calculation <small>Coordinate Polygon Area Algorithm using inches</small>
Basement (Living area)	545	$-((343.3 + 343.3) * (46.8 - 563.8) + (343.3 + 255.8) * (563.8 - 563.8) + (255.8 + 255.8) * (563.8 - 466.8) + (255.8 + 176.7) * (466.8 - 466.8) + (176.7 + 176.7) * (466.8 - 46.8) + (176.7 + 343.3) * (46.8 - 46.8)) * 0.5 * 0.00694$
UTILITY (Non-living area)	53	$-((255.8 + 255.8) * (466.8 - 563.8) + (255.8 + 176.7) * (563.8 - 563.8) + (176.7 + 176.7) * (563.8 - 466.8) + (176.7 + 255.8) * (466.8 - 466.8)) * 0.5 * 0.00694$

159 Ranleigh Avenue, Toronto, Ontario M4N 1X2, Canada

Gross Living Area: 1100 sq. ft

Level 3



Space

Area (sq. ft)

Calculation

Coordinate Polygon Area Algorithm using inches

2nd floor
(Living area)

560

$$\begin{aligned}
 & -((343.3 + 343.3) * (46.8 - 544.5) + (343.3 + 313.2) * (544.5 - 544.5) + (313.2 + 313.2) * (544.5 - \\
 & 556.5) + (313.2 + 319.2) * (556.5 - 562.5) + (319.2 + 319.2) * (562.5 - 592.9) + (319.2 + 197.1) * \\
 & (592.9 - 592.9) + (197.1 + 197.1) * (592.9 - 562.5) + (197.1 + 203.1) * (562.5 - 556.5) + (203.1 + \\
 & 203.1) * (556.5 - 544.5) + (203.1 + 176.7) * (544.5 - 544.5) + (176.7 + 176.7) * (544.5 - 205.4) + \\
 & (176.7 + 227.5) * (205.4 - 205.4) + (227.5 + 227.5) * (205.4 - 46.8) + (227.5 + 343.3) * (46.8 - \\
 & 46.8)) * 0.5 * 0.00694
 \end{aligned}$$

159 Ranleigh Avenue, Toronto, Ontario M4N 1X2, Canada

Gross Living Area: 1100 sq. ft

Level 3

Space	Area (sq. ft)	Calculation <small>Coordinate Polygon Area Algorithm using inches</small>
LOW CEILING (Non-living area)	3	$-\left((203.1 + 203.1) * (544.5 - 556.5) + (203.1 + 197.1) * (556.5 - 562.5) + (197.1 + 176.7) * (562.5 - 562.5) + (176.7 + 176.7) * (562.5 - 544.5) + (176.7 + 203.1) * (544.5 - 544.5)\right) * 0.5 * 0.00694$
LOW CEILING (Non-living area)	4	$-\left((343.3 + 343.3) * (544.5 - 562.5) + (343.3 + 319.2) * (562.5 - 562.5) + (319.2 + 313.2) * (562.5 - 556.5) + (313.2 + 313.2) * (556.5 - 544.5) + (313.2 + 343.3) * (544.5 - 544.5)\right) * 0.5 * 0.00694$