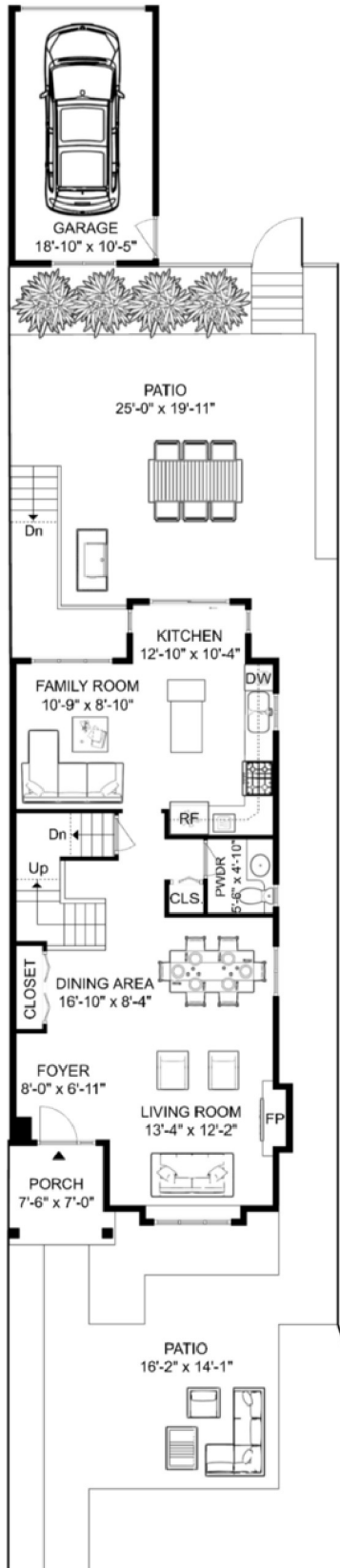


6350 Douglas Street West Vancouver

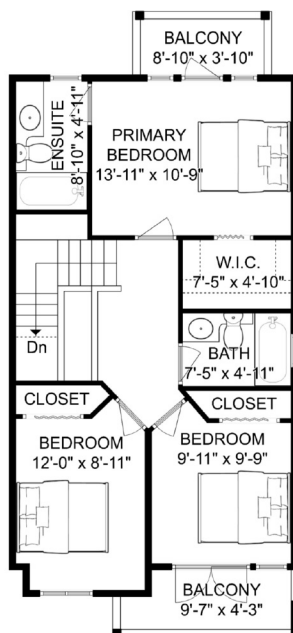
INTERIOR LIVING SPACE	(sq.ft.)
Upper Floor	711
Main Floor	872
Lower Floor	788
Total Area	2,371

AUXILIARY	(sq.ft.)
Balcony Total	75
Porch	53
Garage	196
Patio Total	726
Combined Total	3,421

GARAGE
196 sq.ft. | Ceiling Height: 8'-1"

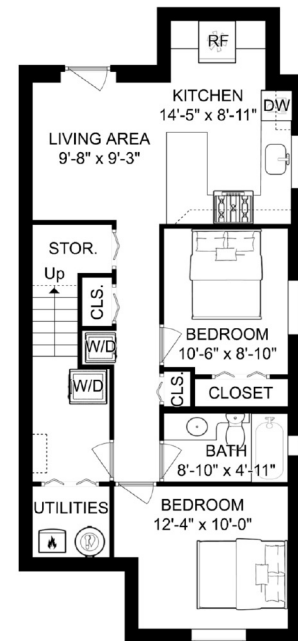


UPPER FLOOR
711 sq.ft. | Ceiling Height: 8'-0"



MAIN FLOOR
872 sq.ft. | Ceiling Height: 9'-0"

LOWER FLOOR
788 sq.ft. | Ceiling Height: 8'-0"



5 bed 3½ bath

1 garage + 1 open
+ 2 street parking

