

Home report

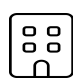
29 Maple Drive, Bedford, Hillsborough County, New Hampshire,
United States, 03110



Total Area: 2293 sq. ft

Below Ground: 0 sq. ft, Floor 2: 1566 sq. ft, Floor 3: 727 sq. ft
Excluded: Room 415 sq. ft, Undefined 11 sq. ft, Basement 493 sq. ft, Garage 526 sq. ft,
Covered deck 70 sq. ft, Embeddedwindow 10 sq. ft, Low ceiling 36 sq. ft, Walls: 257 sq. ft

Property summary

 **3** Floors

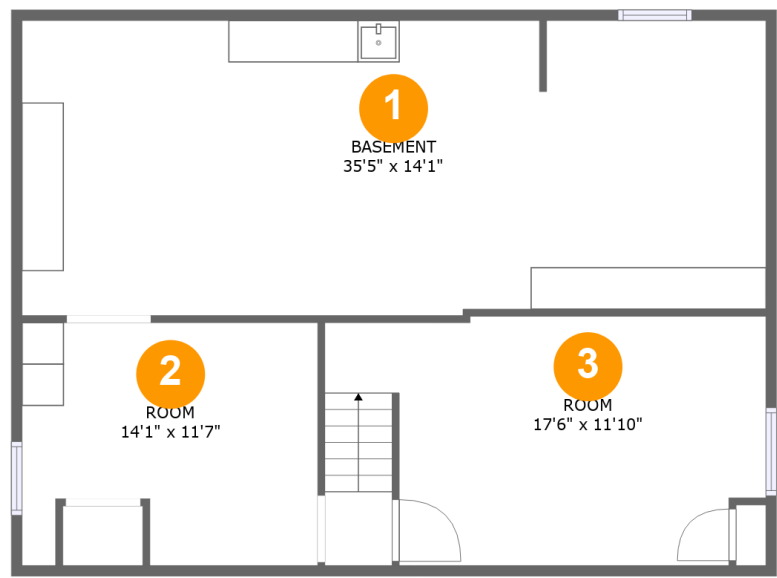
 **4** Bedrooms

 **2** Bathrooms

 **1** Garages

Home report

29 Maple Drive, Bedford, Hillsborough County, New Hampshire,
United States, 03110



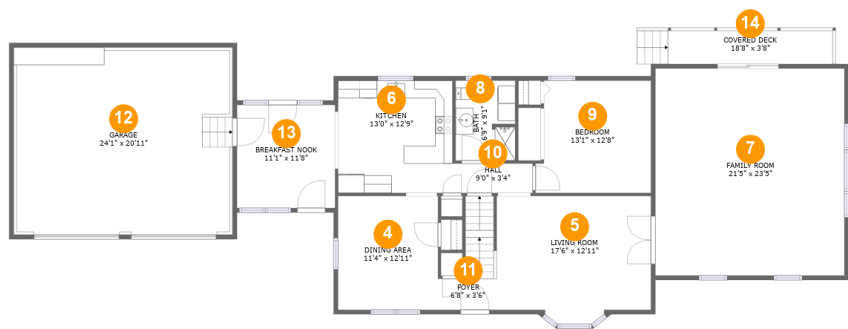
Room dimensions

Floor 1 Below ground Total:0sqft Excluded: 919sqft

#		Max Dimensions	sqft	Included
1	Basement	35'5" x 14'1"	492 sq. ft	No
2	Room	14'1" x 11'7"	149 sq. ft	No
3	Room	17'6" x 11'10"	239 sq. ft	No

Home report

29 Maple Drive, Bedford, Hillsborough County, New Hampshire,
United States, 03110



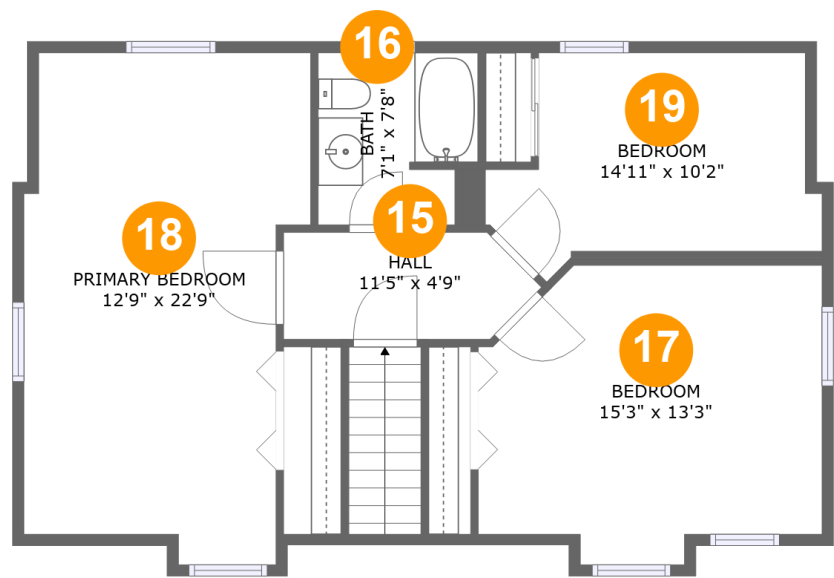
Room dimensions

Floor 2 Total:1566sqft Excluded: 606sqft

#		Max Dimensions	sqft	Included
4	Dining Area	11'4" x 12'11"	146 sq. ft	Yes
5	Living Room	17'6" x 12'11"	225 sq. ft	Yes
6	Kitchen	13'0" x 12'9"	165 sq. ft	Yes
7	Family Room	21'5" x 23'5"	502 sq. ft	Yes
8	Bath	6'9" x 9'1"	60 sq. ft	Yes
9	Bedroom	13'1" x 12'8"	157 sq. ft	Yes
10	Hall	9'0" x 3'4"	30 sq. ft	Yes
11	Foyer	6'8" x 3'6"	54 sq. ft	Yes
12	Garage	24'1" x 20'11"	526 sq. ft	No
13	Breakfast Nook	11'1" x 11'8"	130 sq. ft	Yes
14	Covered Deck	18'8" x 3'8"	70 sq. ft	No

Home report

29 Maple Drive, Bedford, Hillsborough County, New Hampshire,
United States, 03110

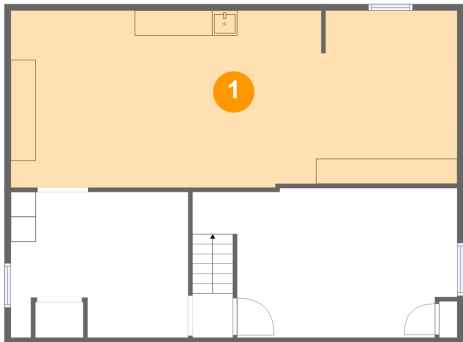


Room dimensions

Floor 3 Total:727sqft Excluded: 36sqft

#		Max Dimensions	sqft	Included
15	Hall	11'5" x 4'9"	49 sq. ft	Yes
16	Bath	7'1" x 7'8"	51 sq. ft	Yes
17	Bedroom	15'3" x 13'3"	162 sq. ft	Yes
18	Primary Bedroom	12'9" x 22'9"	241 sq. ft	Yes
19	Bedroom	14'11" x 10'2"	121 sq. ft	Yes

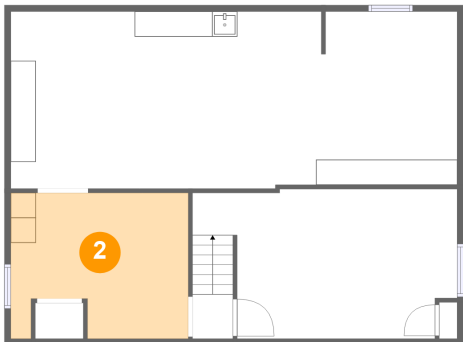
1 Floor 1 - Basement



Max Dimensions: 35'5" x 14'1"
Calculated Area: 492 sq. ft
Included: No

Heated: Yes
Finished: No
Enclosed: Yes
Contiguous: Yes
Permitted: Yes
Wet space: No
Addition: No
Conversion: No

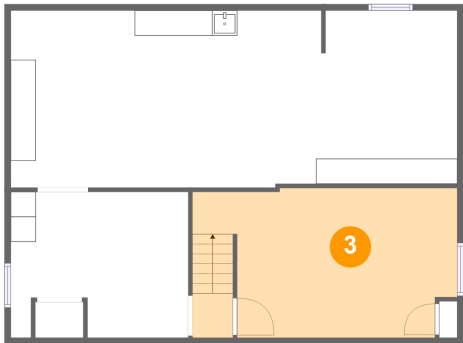
2 Floor 1 - Room



Max Dimensions: 14'1" x 11'7"
Calculated Area: 149 sq. ft
Included: No

Heated: Yes
Finished: No
Enclosed: Yes
Contiguous: Yes
Permitted: Yes
Wet space: No
Addition: No
Conversion: No

3 Floor 1 - Room



Max Dimensions: 17'6" x 11'10"
Calculated Area: 239 sq. ft
Included: No

Heated: Yes
Finished: No
Enclosed: Yes
Contiguous: Yes
Permitted: Yes
Wet space: No
Addition: No
Conversion: No

4 Floor 2 - Dining Area



Max Dimensions: 11'4" x 12'11"
Calculated Area: 146 sq. ft
Included: Yes

Heated: Yes
Finished: Yes
Enclosed: Yes
Contiguous: Yes
Permitted: Yes
Wet space: No
Addition: No
Conversion: No

5 Floor 2 - Living Room



Max Dimensions: 17'6" x 12'11"
Calculated Area: 225 sq. ft
Included: Yes

Heated: Yes
Finished: Yes
Enclosed: Yes
Contiguous: Yes
Permitted: Yes
Wet space: No
Addition: No
Conversion: No

6 Floor 2 - Kitchen



Max Dimensions: 13'0" x 12'9"
Calculated Area: 165 sq. ft
Included: Yes

Heated: Yes
Finished: Yes
Enclosed: Yes
Contiguous: Yes
Permitted: Yes
Wet space: No
Addition: No
Conversion: No

7 Floor 2 - Family Room



Max Dimensions: 21'5" x 23'5"
Calculated Area: 502 sq. ft
Included: Yes

Heated: Yes
Finished: Yes
Enclosed: Yes
Contiguous: Yes
Permitted: Yes
Wet space: No
Addition: No
Conversion: No

8 Floor 2 - Bath



Max Dimensions: 6'9" x 9'1"
Calculated Area: 60 sq. ft
Included: Yes

Heated: Yes
Finished: Yes
Enclosed: Yes
Contiguous: Yes
Permitted: Yes
Wet space: Yes
Addition: No
Conversion: No

9 Floor 2 - Bedroom



Max Dimensions: 13'1" x 12'8"
Calculated Area: 157 sq. ft
Included: Yes

Heated: Yes
Finished: Yes
Enclosed: Yes
Contiguous: Yes
Permitted: Yes
Wet space: No
Addition: No
Conversion: No

10 Floor 2 - Hall



Max Dimensions: 9'0" x 3'4"
Calculated Area: 30 sq. ft
Included: Yes

Heated: Yes
Finished: Yes
Enclosed: Yes
Contiguous: Yes
Permitted: Yes
Wet space: No
Addition: No
Conversion: No

11 Floor 2 - Foyer



Max Dimensions: 6'8" x 3'6"
Calculated Area: 54 sq. ft
Included: Yes

Heated: Yes
Finished: Yes
Enclosed: Yes
Contiguous: Yes
Permitted: Yes
Wet space: No
Addition: No
Conversion: No

12 Floor 2 - Garage



Max Dimensions: 24'1" x 20'11"
Calculated Area: 526 sq. ft
Included: No

Heated: No
Finished: No
Enclosed: Yes
Contiguous: Yes
Permitted: Yes
Wet space: No
Addition: No
Conversion: No

13 Floor 2 - Breakfast Nook



Max Dimensions: 11'1" x 11'8"
Calculated Area: 130 sq. ft
Included: Yes

Heated: Yes
Finished: Yes
Enclosed: Yes
Contiguous: Yes
Permitted: Yes
Wet space: No
Addition: No
Conversion: No

14 Floor 2 - Covered Deck



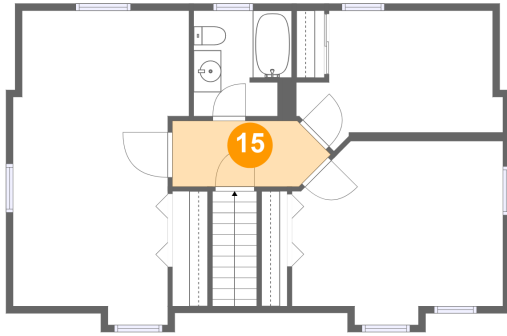
Max Dimensions: 18'8" x 3'8"
Calculated Area: 70 sq. ft
Included: No

Heated: No
Finished: Yes
Enclosed: No
Contiguous: Yes
Permitted: Yes
Wet space: No
Addition: No
Conversion: No

Home report

29 Maple Drive, Bedford, Hillsborough County, New Hampshire,
United States, 03110

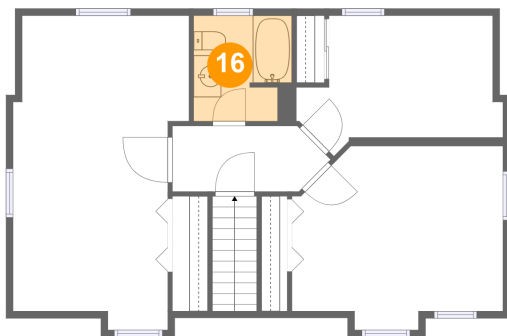
15 Floor 3 - Hall



Max Dimensions: 11'5" x 4'9"
Calculated Area: 49 sq. ft
Included: Yes

Heated: Yes
Finished: Yes
Enclosed: Yes
Contiguous: Yes
Permitted: Yes
Wet space: No
Addition: No
Conversion: No

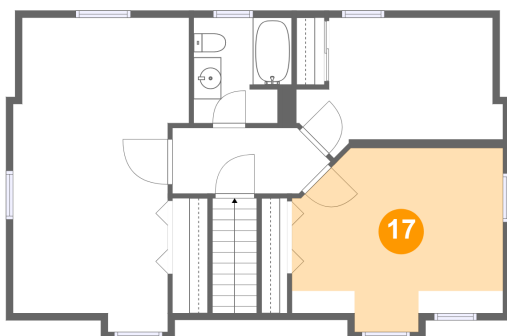
16 Floor 3 - Bath



Max Dimensions: 7'1" x 7'8"
Calculated Area: 51 sq. ft
Included: Yes

Heated: Yes
Finished: Yes
Enclosed: Yes
Contiguous: Yes
Permitted: Yes
Wet space: Yes
Addition: No
Conversion: No

17 Floor 3 - Bedroom



Max Dimensions: 15'3" x 13'3"
Calculated Area: 162 sq. ft
Included: Yes

Heated: Yes
Finished: Yes
Enclosed: Yes
Contiguous: Yes
Permitted: Yes
Wet space: No
Addition: No
Conversion: No

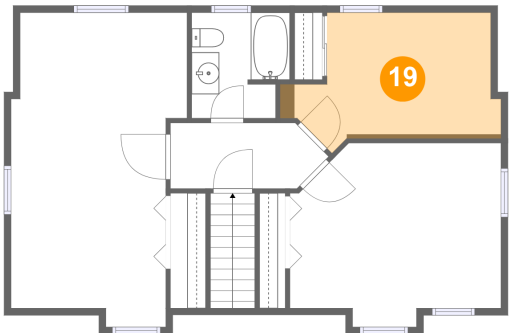
18 Floor 3 - Primary Bedroom



Max Dimensions: 12'9" x 22'9"
Calculated Area: 241 sq. ft
Included: Yes

Heated: Yes
Finished: Yes
Enclosed: Yes
Contiguous: Yes
Permitted: Yes
Wet space: No
Addition: No
Conversion: No

19 Floor 3 - Bedroom



Max Dimensions: 14'11" x 10'2"
Calculated Area: 121 sq. ft
Included: Yes

Heated: Yes
Finished: Yes
Enclosed: Yes
Contiguous: Yes
Permitted: Yes
Wet space: No
Addition: No
Conversion: No