

Home report

3725 Colonial Avenue, Castle Hill, Cave Spring, Roanoke,
Roanoke County, Virginia, United States, 24018



Total Area: 1867 sq. ft

Floor 1: 822 sq. ft, Floor 2: 1045 sq. ft

Excluded: Basement 211 sq. ft, Undefined 12 sq. ft, Patio 1011 sq. ft, Fireplace 13 sq. ft, Porch 45 sq. ft, Deck 218 sq. ft, Walls: 152 sq. ft

Property summary

 **2** Floors

 **4** Bedrooms

 **2** Bathrooms

Home report

3725 Colonial Avenue, Castle Hill, Cave Spring, Roanoke,
Roanoke County, Virginia, United States, 24018



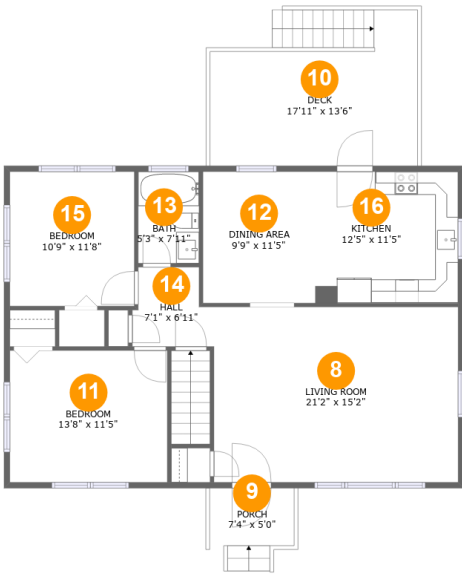
Room dimensions

Floor 1 Total:822sqft Excluded: 1247sqft

#		Max Dimensions	sqft	Included
1	Bedroom	12'0" x 10'6"	114 sq. ft	Yes
2	Recreation Room	13'11" x 26'0"	344 sq. ft	Yes
3	Patio	52'5" x 20'7"	1011 sq. ft	No
4	Bedroom	12'0" x 12'7"	151 sq. ft	Yes
5	Basement	12'4" x 22'2"	211 sq. ft	No
6	Bath	4'10" x 7'5"	35 sq. ft	Yes
7	Hall	11'10" x 12'11"	73 sq. ft	Yes

Home report

3725 Colonial Avenue, Castle Hill, Cave Spring, Roanoke,
Roanoke County, Virginia, United States, 24018



Room dimensions

Floor 2 Total:1045sqft Excluded: 263sqft

#		Max Dimensions	sqft	Included
8	Living Room	21'2" x 15'2"	321 sq. ft	Yes
9	Porch	7'4" x 5'0"	45 sq. ft	No
10	Deck	17'11" x 13'6"	218 sq. ft	No
11	Bedroom	13'8" x 11'5"	156 sq. ft	Yes
12	Dining Area	9'9" x 11'5"	111 sq. ft	Yes
13	Bath	5'3" x 7'11"	42 sq. ft	Yes
14	Hall	7'1" x 6'11"	42 sq. ft	Yes
15	Bedroom	10'9" x 11'8"	126 sq. ft	Yes
16	Kitchen	12'5" x 11'5"	141 sq. ft	Yes

3725 Colonial Avenue, Castle Hill, Cave Spring, Roanoke,
Roanoke County, Virginia, United States, 24018

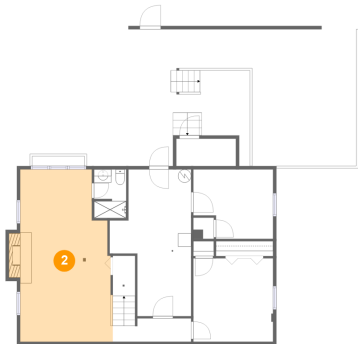
1 Floor 1 - Bedroom



Max Dimensions: 12'0" x 10'6"
Calculated Area: 114 sq. ft
Included: No

Heated: Yes
Finished: Yes
Enclosed: Yes
Contiguous: No
Permitted: Yes
Wet space: No
Addition: No
Conversion: No

2 Floor 1 - Recreation Room



Max Dimensions: 13'11" x 26'0"
Calculated Area: 344 sq. ft
Included: Yes

Heated: Yes
Finished: Yes
Enclosed: Yes
Contiguous: Yes
Permitted: Yes
Wet space: No
Addition: No
Conversion: No

3725 Colonial Avenue, Castle Hill, Cave Spring, Roanoke,
Roanoke County, Virginia, United States, 24018

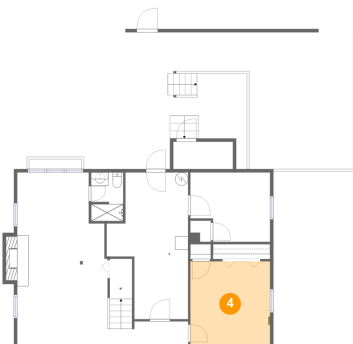
3 Floor 1 - Patio



Max Dimensions: 52'5" x 20'7"
Calculated Area: 1011 sq. ft
Included: No

Heated: No
Finished: Yes
Enclosed: No
Contiguous: Yes
Permitted: Yes
Wet space: No
Addition: No
Conversion: No

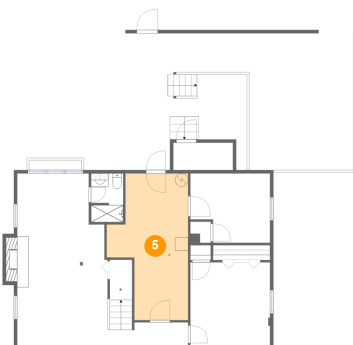
4 Floor 1 - Bedroom



Max Dimensions: 12'0" x 12'7"
Calculated Area: 151 sq. ft
Included: Yes

Heated: Yes
Finished: Yes
Enclosed: Yes
Contiguous: Yes
Permitted: Yes
Wet space: No
Addition: No
Conversion: No

5 Floor 1 - Basement



Max Dimensions: 12'4" x 22'2"
Calculated Area: 211 sq. ft
Included: No

Heated: Yes
Finished: No
Enclosed: Yes
Contiguous: Yes
Permitted: Yes
Wet space: No
Addition: No
Conversion: No

3725 Colonial Avenue, Castle Hill, Cave Spring, Roanoke,
Roanoke County, Virginia, United States, 24018

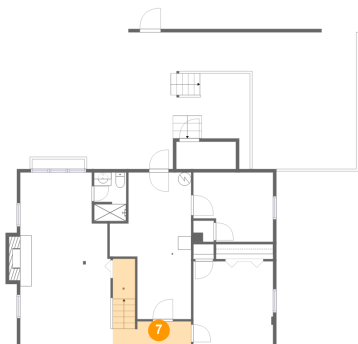
6 Floor 1 - Bath



Max Dimensions: 4'10" x 7'5"
Calculated Area: 35 sq. ft
Included: Yes

Heated: Yes
Finished: Yes
Enclosed: Yes
Contiguous: Yes
Permitted: Yes
Wet space: Yes
Addition: No
Conversion: No

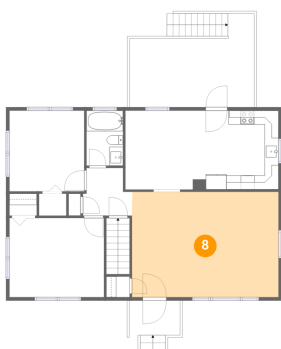
7 Floor 1 - Hall



Max Dimensions: 11'10" x 12'11"
Calculated Area: 73 sq. ft
Included: Yes

Heated: Yes
Finished: Yes
Enclosed: Yes
Contiguous: Yes
Permitted: Yes
Wet space: No
Addition: No
Conversion: No

8 Floor 2 - Living Room



Max Dimensions: 21'2" x 15'2"
Calculated Area: 321 sq. ft
Included: Yes

Heated: Yes
Finished: Yes
Enclosed: Yes
Contiguous: Yes
Permitted: Yes
Wet space: No
Addition: No
Conversion: No

3725 Colonial Avenue, Castle Hill, Cave Spring, Roanoke,
Roanoke County, Virginia, United States, 24018

9 Floor 2 - Porch



Max Dimensions: 7'4" x 5'0"
Calculated Area: 45 sq. ft
Included: No

Heated: No
Finished: Yes
Enclosed: No
Contiguous: Yes
Permitted: Yes
Wet space: No
Addition: No
Conversion: No

10 Floor 2 - Deck



Max Dimensions: 17'11" x 13'6"
Calculated Area: 218 sq. ft
Included: No

Heated: No
Finished: Yes
Enclosed: No
Contiguous: Yes
Permitted: Yes
Wet space: No
Addition: No
Conversion: No

11 Floor 2 - Bedroom



Max Dimensions: 13'8" x 11'5"
Calculated Area: 156 sq. ft
Included: Yes

Heated: Yes
Finished: Yes
Enclosed: Yes
Contiguous: Yes
Permitted: Yes
Wet space: No
Addition: No
Conversion: No

12 Floor 2 - Dining Area



Max Dimensions: 9'9" x 11'5"
Calculated Area: 111 sq. ft
Included: Yes

Heated: Yes
Finished: Yes
Enclosed: Yes
Contiguous: Yes
Permitted: Yes
Wet space: No
Addition: No
Conversion: No

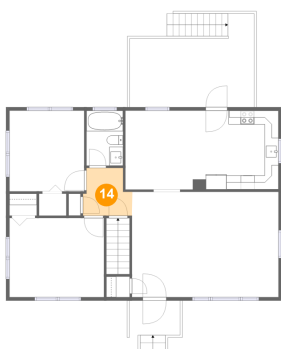
13 Floor 2 - Bath



Max Dimensions: 5'3" x 7'11"
Calculated Area: 42 sq. ft
Included: Yes

Heated: Yes
Finished: Yes
Enclosed: Yes
Contiguous: Yes
Permitted: Yes
Wet space: Yes
Addition: No
Conversion: No

14 Floor 2 - Hall



Max Dimensions: 7'1" x 6'11"
Calculated Area: 42 sq. ft
Included: Yes

Heated: Yes
Finished: Yes
Enclosed: Yes
Contiguous: Yes
Permitted: Yes
Wet space: No
Addition: No
Conversion: No

3725 Colonial Avenue, Castle Hill, Cave Spring, Roanoke,
Roanoke County, Virginia, United States, 24018

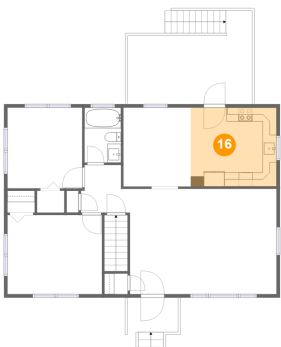
15 Floor 2 - Bedroom



Max Dimensions: 10'9" x 11'8"
Calculated Area: 126 sq. ft
Included: Yes

Heated: Yes
Finished: Yes
Enclosed: Yes
Contiguous: Yes
Permitted: Yes
Wet space: No
Addition: No
Conversion: No

16 Floor 2 - Kitchen



Max Dimensions: 12'5" x 11'5"
Calculated Area: 141 sq. ft
Included: Yes

Heated: Yes
Finished: Yes
Enclosed: Yes
Contiguous: Yes
Permitted: Yes
Wet space: No
Addition: No
Conversion: No