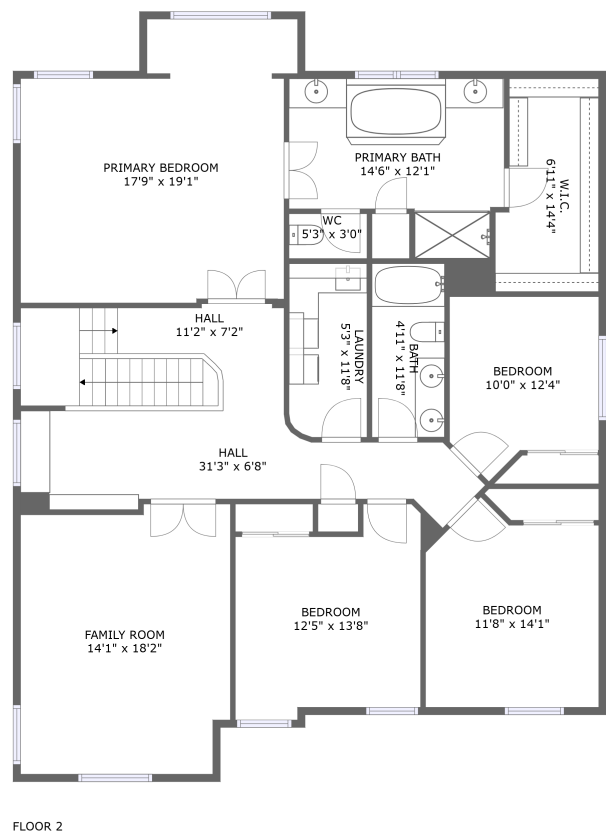
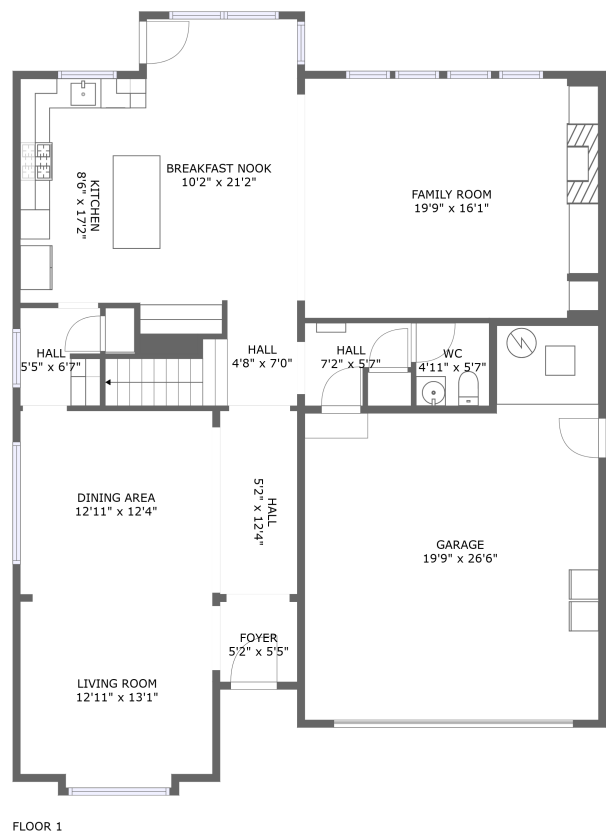


Home report

1315 Begonia Avenue, Forest Grove, Washington County,
Oregon, United States, 97116



Total Area: 3034 sq. ft
Floor 1: 1286 sq. ft, Floor 2: 1748 sq. ft
Excluded: Garage 448 sq. ft, Walls: 206 sq. ft

Property summary

 **2** Floors

 **4** Bedrooms

 **2** Bathrooms

Home report

**1315 Begonia Avenue, Forest Grove, Washington County,
Oregon, United States, 97116**



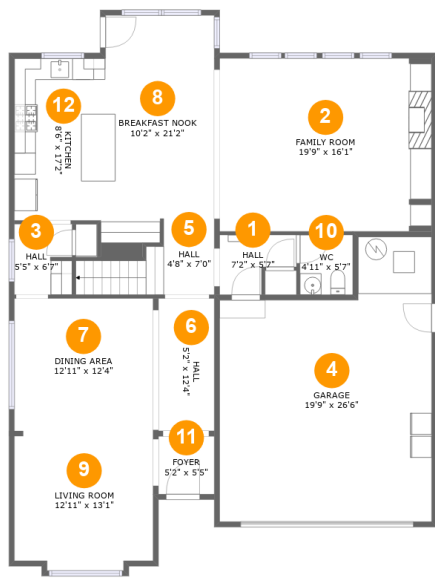
1
Half baths



1
Garages

Home report

1315 Begonia Avenue, Forest Grove, Washington County,
Oregon, United States, 97116



Room dimensions

Floor 1 Total:1286sqft Excluded: 448sqft

#		Max Dimensions	sqft	Included
1	Hall	7'2" x 5'7"	31 sq. ft	Yes
2	Family Room	19'9" x 16'1"	318 sq. ft	Yes
3	Hall	5'5" x 6'7"	35 sq. ft	Yes
4	Garage	19'9" x 26'6"	448 sq. ft	No
5	Hall	4'8" x 7'0"	62 sq. ft	Yes
6	Hall	5'2" x 12'4"	64 sq. ft	Yes
7	Dining Area	12'11" x 12'4"	158 sq. ft	Yes
8	Breakfast Nook	10'2" x 21'2"	208 sq. ft	Yes
9	Living Room	12'11" x 13'1"	164 sq. ft	Yes
10	WC	4'11" x 5'7"	27 sq. ft	Yes
11	Foyer	5'2" x 5'5"	28 sq. ft	Yes

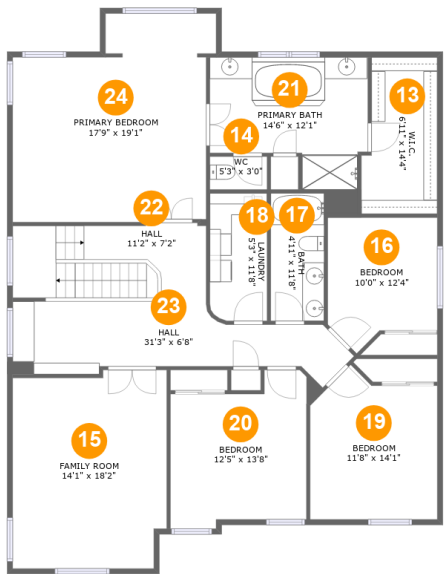
Home report

1315 Begonia Avenue, Forest Grove, Washington County,
Oregon, United States, 97116

#		Max Dimensions	sqft	Included
12	Kitchen	8'6" x 17'2"	130 sq. ft	Yes

Home report

1315 Begonia Avenue, Forest Grove, Washington County,
Oregon, United States, 97116



Room dimensions

Floor 2 Total:1748sqft Excluded: 0sqft

#		Max Dimensions	sqft	Included
13	W.I.C.	6'11" x 14'4"	91 sq. ft	Yes
14	WC	5'3" x 3'0"	16 sq. ft	Yes
15	Family Room	14'1" x 18'2"	246 sq. ft	Yes
16	Bedroom	10'0" x 12'4"	108 sq. ft	Yes
17	Bath	4'11" x 11'8"	63 sq. ft	Yes
18	Laundry	5'3" x 11'8"	61 sq. ft	Yes
19	Bedroom	11'8" x 14'1"	145 sq. ft	Yes
20	Bedroom	12'5" x 13'8"	156 sq. ft	Yes
21	Primary Bath	14'6" x 12'1"	144 sq. ft	Yes
22	Hall	11'2" x 7'2"	123 sq. ft	Yes
23	Hall	31'3" x 6'8"	163 sq. ft	Yes

Home report

1315 Begonia Avenue, Forest Grove, Washington County,
Oregon, United States, 97116

#		Max Dimensions	sqft	Included
24	Primary Bedroom	17'9" x 19'1"	305 sq. ft	Yes

1315 Begonia Avenue, Forest Grove, Washington County,
Oregon, United States, 97116

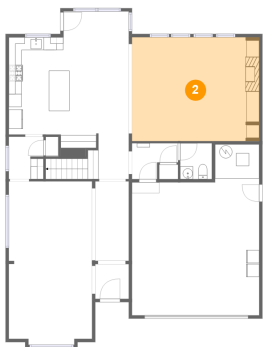
1 Floor 1 - Hall



Max Dimensions: 7'2" x 5'7"
Calculated Area: 31 sq. ft
Included: Yes

Heated: Yes
Finished: Yes
Enclosed: Yes
Contiguous: Yes
Permitted: Yes
Wet space: No
Addition: No
Conversion: No

2 Floor 1 - Family Room

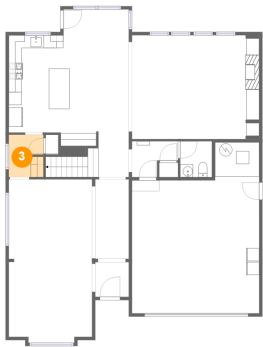


Max Dimensions: 19'9" x 16'1"
Calculated Area: 318 sq. ft
Included: Yes

Heated: Yes
Finished: Yes
Enclosed: Yes
Contiguous: Yes
Permitted: Yes
Wet space: No
Addition: No
Conversion: No

1315 Begonia Avenue, Forest Grove, Washington County,
Oregon, United States, 97116

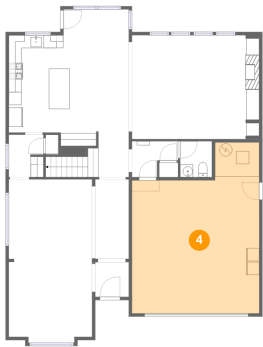
3 Floor 1 - Hall



Max Dimensions: 5'5" x 6'7"
Calculated Area: 35 sq. ft
Included: Yes

Heated: Yes
Finished: Yes
Enclosed: Yes
Contiguous: Yes
Permitted: Yes
Wet space: No
Addition: No
Conversion: No

4 Floor 1 - Garage



Max Dimensions: 19'9" x 26'6"
Calculated Area: 448 sq. ft
Included: No

Heated: No
Finished: No
Enclosed: Yes
Contiguous: Yes
Permitted: Yes
Wet space: No
Addition: No
Conversion: No

5 Floor 1 - Hall

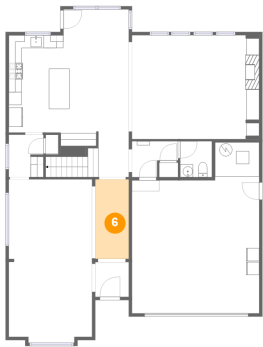


Max Dimensions: 4'8" x 7'0"
Calculated Area: 62 sq. ft
Included: Yes

Heated: Yes
Finished: Yes
Enclosed: Yes
Contiguous: Yes
Permitted: Yes
Wet space: No
Addition: No
Conversion: No

1315 Begonia Avenue, Forest Grove, Washington County,
Oregon, United States, 97116

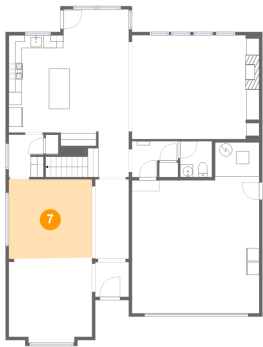
6 Floor 1 - Hall



Max Dimensions: 5'2" x 12'4"
Calculated Area: 64 sq. ft
Included: Yes

Heated: Yes
Finished: Yes
Enclosed: Yes
Contiguous: Yes
Permitted: Yes
Wet space: No
Addition: No
Conversion: No

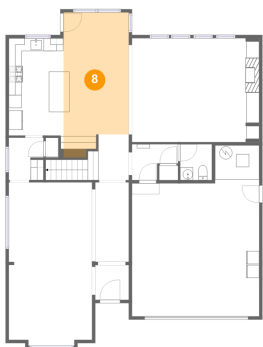
7 Floor 1 - Dining Area



Max Dimensions: 12'11" x 12'4"
Calculated Area: 158 sq. ft
Included: Yes

Heated: Yes
Finished: Yes
Enclosed: Yes
Contiguous: Yes
Permitted: Yes
Wet space: No
Addition: No
Conversion: No

8 Floor 1 - Breakfast Nook

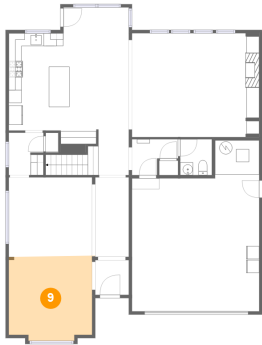


Max Dimensions: 10'2" x 21'2"
Calculated Area: 208 sq. ft
Included: Yes

Heated: Yes
Finished: Yes
Enclosed: Yes
Contiguous: Yes
Permitted: Yes
Wet space: No
Addition: No
Conversion: No

1315 Begonia Avenue, Forest Grove, Washington County,
Oregon, United States, 97116

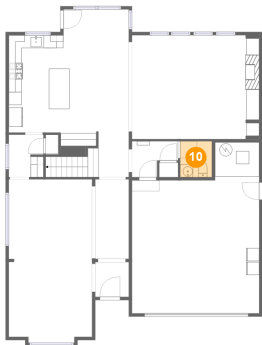
9 Floor 1 - Living Room



Max Dimensions: 12'11" x 13'1"
Calculated Area: 164 sq. ft
Included: Yes

Heated: Yes
Finished: Yes
Enclosed: Yes
Contiguous: Yes
Permitted: Yes
Wet space: No
Addition: No
Conversion: No

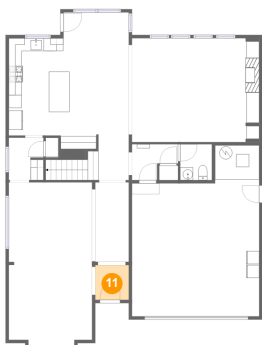
10 Floor 1 - WC



Max Dimensions: 4'11" x 5'7"
Calculated Area: 27 sq. ft
Included: Yes

Heated: Yes
Finished: Yes
Enclosed: Yes
Contiguous: Yes
Permitted: Yes
Wet space: Yes
Addition: No
Conversion: No

11 Floor 1 - Foyer

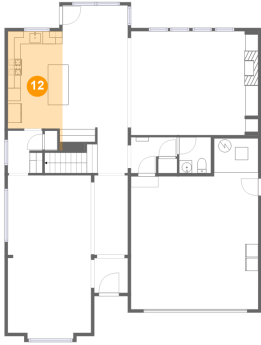


Max Dimensions: 5'2" x 5'5"
Calculated Area: 28 sq. ft
Included: Yes

Heated: Yes
Finished: Yes
Enclosed: Yes
Contiguous: Yes
Permitted: Yes
Wet space: No
Addition: No
Conversion: No

1315 Begonia Avenue, Forest Grove, Washington County,
Oregon, United States, 97116

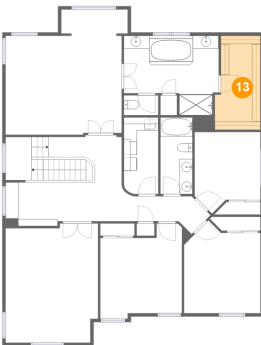
12 Floor 1 - Kitchen



Max Dimensions: 8'6" x
17'2"
Calculated Area: 130 sq. ft
Included: Yes

Heated: Yes
Finished: Yes
Enclosed: Yes
Contiguous:
Yes
Permitted: Yes
Wet space: No
Addition: No
Conversion: No

13 Floor 2 - W.I.C.



Max Dimensions: 6'11" x
14'4"
Calculated Area: 91 sq. ft
Included: Yes

Heated: Yes
Finished: Yes
Enclosed: Yes
Contiguous:
Yes
Permitted: Yes
Wet space: No
Addition: No
Conversion: No

14 Floor 2 - WC



Max Dimensions: 5'3" x 3'0"
Calculated Area: 16 sq. ft
Included: Yes

Heated: Yes
Finished: Yes
Enclosed: Yes
Contiguous: Yes
Permitted: Yes
Wet space: Yes
Addition: No
Conversion: No

1315 Begonia Avenue, Forest Grove, Washington County,
Oregon, United States, 97116

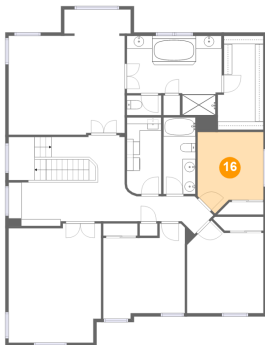
15 Floor 2 - Family Room



Max Dimensions: 14'1" x 18'2"
Calculated Area: 246 sq. ft
Included: Yes

Heated: Yes
Finished: Yes
Enclosed: Yes
Contiguous: Yes
Permitted: Yes
Wet space: No
Addition: No
Conversion: No

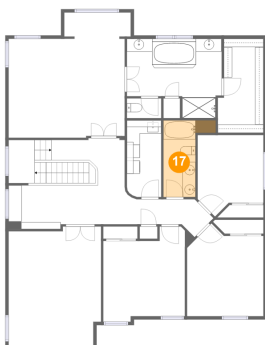
16 Floor 2 - Bedroom



Max Dimensions: 10'0" x 12'4"
Calculated Area: 108 sq. ft
Included: Yes

Heated: Yes
Finished: Yes
Enclosed: Yes
Contiguous: Yes
Permitted: Yes
Wet space: No
Addition: No
Conversion: No

17 Floor 2 - Bath



Max Dimensions: 4'11" x 11'8"
Calculated Area: 63 sq. ft
Included: Yes

Heated: Yes
Finished: Yes
Enclosed: Yes
Contiguous: Yes
Permitted: Yes
Wet space: Yes
Addition: No
Conversion: No

1315 Begonia Avenue, Forest Grove, Washington County,
Oregon, United States, 97116

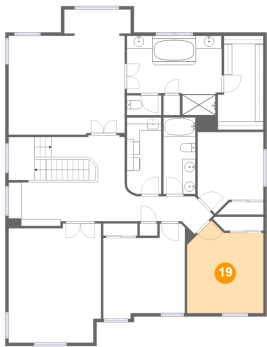
18 Floor 2 - Laundry



Max Dimensions: 5'3" x 11'8"
Calculated Area: 61 sq. ft
Included: Yes

Heated: Yes
Finished: Yes
Enclosed: Yes
Contiguous: Yes
Permitted: Yes
Wet space: No
Addition: No
Conversion: No

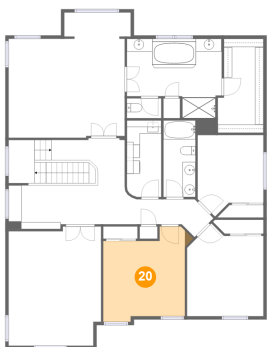
19 Floor 2 - Bedroom



Max Dimensions: 11'8" x 14'1"
Calculated Area: 145 sq. ft
Included: Yes

Heated: Yes
Finished: Yes
Enclosed: Yes
Contiguous: Yes
Permitted: Yes
Wet space: No
Addition: No
Conversion: No

20 Floor 2 - Bedroom

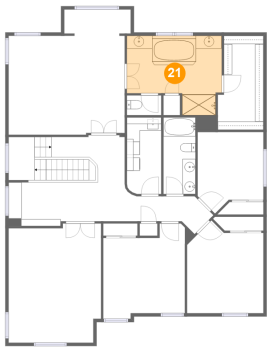


Max Dimensions: 12'5" x 13'8"
Calculated Area: 156 sq. ft
Included: Yes

Heated: Yes
Finished: Yes
Enclosed: Yes
Contiguous: Yes
Permitted: Yes
Wet space: No
Addition: No
Conversion: No

1315 Begonia Avenue, Forest Grove, Washington County,
Oregon, United States, 97116

21 Floor 2 - Primary Bath



Max Dimensions: 14'6" x 12'1"
Calculated Area: 144 sq. ft
Included: Yes

Heated: Yes
Finished: Yes
Enclosed: Yes
Contiguous: Yes
Permitted: Yes
Wet space: Yes
Addition: No
Conversion: No

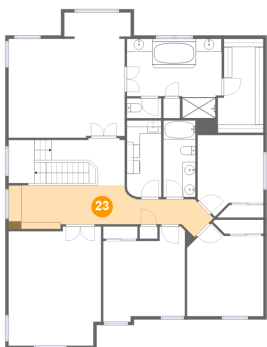
22 Floor 2 - Hall



Max Dimensions: 11'2" x 7'2"
Calculated Area: 123 sq. ft
Included: Yes

Heated: Yes
Finished: Yes
Enclosed: Yes
Contiguous: Yes
Permitted: Yes
Wet space: No
Addition: No
Conversion: No

23 Floor 2 - Hall



Max Dimensions: 31'3" x 6'8"
Calculated Area: 163 sq. ft
Included: Yes

Heated: Yes
Finished: Yes
Enclosed: Yes
Contiguous: Yes
Permitted: Yes
Wet space: No
Addition: No
Conversion: No

1315 Begonia Avenue, Forest Grove, Washington County,
Oregon, United States, 97116

24 Floor 2 - Primary Bedroom



Max Dimensions: 17'9" x 19'1"
Calculated Area: 305 sq. ft
Included: Yes

Heated: Yes
Finished: Yes
Enclosed: Yes
Contiguous: Yes
Permitted: Yes
Wet space: No
Addition: No
Conversion: No