

Home data report

1436 Bark Ln,Shelbyville,IN,US




Total Area: 2068 sq. ft

1st Floor: 2068 sq. ft

Excluded: Garage 515 sq. ft, Covered deck 315 sq. ft, Porch 81 sq. ft, Fireplace 10 sq. ft, Walls: 141 sq. ft

Property summary

 **1** Floors

 **3** Bedrooms

 **2** Bathrooms

 **1** Garages

Home data report

1436 Bark Ln,Shelbyville,IN,US



Room dimensions

Floor 1 Total:2068sqft Excluded: 921sqft

#		Dimensions	sqft	Counted as living area
1	Bath	5'9" x 6'2"	36 sq. ft	Yes
2	Primary Bedroom	13'11" x 16'11"	235 sq. ft	Yes
3	Laundry	8'4" x 11'5"	71 sq. ft	Yes
4	Porch	13'1" x 6'2"	81 sq. ft	No
5	Kitchen	16'3" x 13'11"	182 sq. ft	Yes
6	Office	9'4" x 10'4"	90 sq. ft	Yes
7	Living Room	17'9" x 27'8"	428 sq. ft	Yes
8	Foyer	9'11" x 5'11"	59 sq. ft	Yes
9	Bath	8'2" x 8'4"	55 sq. ft	Yes
10	Primary Bath	11'1" x 14'6"	105 sq. ft	Yes
11	Utility	4'11" x 5'6"	27 sq. ft	Yes

## Home data report

# 1436 Bark Ln,Shelbyville,IN,US

#		Dimensions	sqft	Counted as living area
12	Hall	5'5" x 14'0"	68 sq. ft	Yes
13	Bedroom	11'7" x 14'10"	154 sq. ft	Yes
14	W.I.C.	5'9" x 13'10"	79 sq. ft	Yes
15	Garage	22'2" x 23'5"	515 sq. ft	No
16	Bedroom	11'8" x 11'0"	128 sq. ft	Yes
17	Dining Area	15'11" x 16'5"	218 sq. ft	Yes
18	Covered Deck	19'10" x 16'10"	315 sq. ft	No

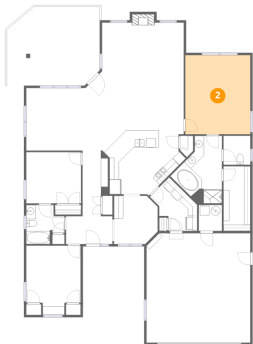
1 Floor 1 - Bath



Dimensions: 5'9" x 6'2"  
Area: 36 sq. ft  
Counted as living area: Yes

Heated: Yes  
Finished: Yes  
Enclosed: Yes  
Contiguous: Yes  
Permitted: Yes  
Wet space: No  
Addition: No  
Conversion: No

2 Floor 1 - Primary Bedroom



Dimensions: 13'11" x 16'11"  
Area: 235 sq. ft  
Counted as living area: Yes

Heated: Yes  
Finished: Yes  
Enclosed: Yes  
Contiguous: Yes  
Permitted: Yes  
Wet space: No  
Addition: No  
Conversion: No

3 Floor 1 - Laundry



Dimensions: 8'4" x 11'5"  
Area: 71 sq. ft  
Counted as living area: Yes

Heated: Yes  
Finished: Yes  
Enclosed: Yes  
Contiguous: Yes  
Permitted: Yes  
Wet space: No  
Addition: No  
Conversion: No

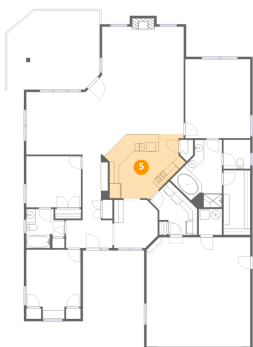
4 Floor 1 - Porch



Dimensions: 13'1" x 6'2"  
Area: 81 sq. ft  
Counted as living area: No

Heated: No  
Finished: No  
Enclosed: No  
Contiguous: Yes  
Permitted: Yes  
Wet space: No  
Addition: No  
Conversion: No

5 Floor 1 - Kitchen



Dimensions: 16'3" x 13'11"  
Area: 182 sq. ft  
Counted as living area: Yes

Heated: Yes  
Finished: Yes  
Enclosed: Yes  
Contiguous: Yes  
Permitted: Yes  
Wet space: No  
Addition: No  
Conversion: No

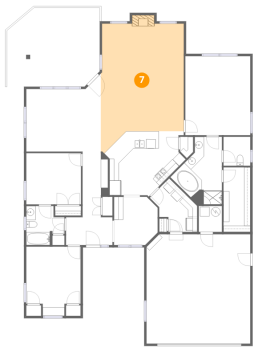
6 Floor 1 - Office



Dimensions: 9'4" x 10'4"  
Area: 90 sq. ft  
Counted as living area: Yes

Heated: Yes  
Finished: Yes  
Enclosed: Yes  
Contiguous: Yes  
Permitted: Yes  
Wet space: No  
Addition: No  
Conversion: No

7 Floor 1 - Living Room



Dimensions: 17'9" x 27'8"  
Area: 428 sq. ft  
Counted as living area: Yes

Heated: Yes  
Finished: Yes  
Enclosed: Yes  
Contiguous: Yes  
Permitted: Yes  
Wet space: No  
Addition: No  
Conversion: No

8 Floor 1 - Foyer



Dimensions: 9'11" x 5'11"  
Area: 59 sq. ft  
Counted as living area: Yes

Heated: Yes  
Finished: Yes  
Enclosed: Yes  
Contiguous: Yes  
Permitted: Yes  
Wet space: No  
Addition: No  
Conversion: No

9 Floor 1 - Bath



Dimensions: 8'2" x 8'4"  
Area: 55 sq. ft  
Counted as living area: Yes

Heated: Yes  
Finished: Yes  
Enclosed: Yes  
Contiguous: Yes  
Permitted: Yes  
Wet space: Yes  
Addition: No  
Conversion: No

10 Floor 1 - Primary Bath



Dimensions: 11'1" x 14'6"  
Area: 105 sq. ft  
Counted as living area: Yes

Heated: Yes  
Finished: Yes  
Enclosed: Yes  
Contiguous: Yes  
Permitted: Yes  
Wet space: Yes  
Addition: No  
Conversion: No

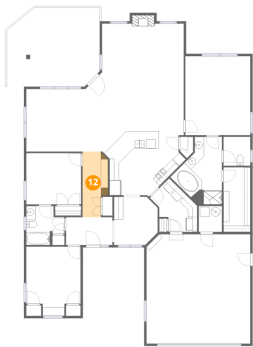
11 Floor 1 - Utility



Dimensions: 4'11" x 5'6"  
Area: 27 sq. ft  
Counted as living area: Yes

Heated: Yes  
Finished: Yes  
Enclosed: Yes  
Contiguous: Yes  
Permitted: Yes  
Wet space: No  
Addition: No  
Conversion: No

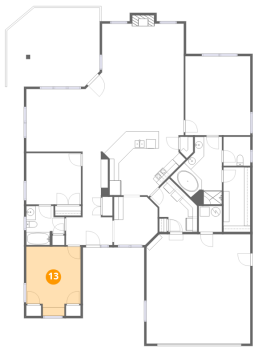
12 Floor 1 - Hall



Dimensions: 5'5" x 14'0"  
Area: 68 sq. ft  
Counted as living area: Yes

Heated: Yes  
Finished: Yes  
Enclosed: Yes  
Contiguous: Yes  
Permitted: Yes  
Wet space: No  
Addition: No  
Conversion: No

13 Floor 1 - Bedroom



Dimensions: 11'7" x 14'10"  
Area: 154 sq. ft  
Counted as living area: Yes

Heated: Yes  
Finished: Yes  
Enclosed: Yes  
Contiguous: Yes  
Permitted: Yes  
Wet space: No  
Addition: No  
Conversion: No

14 Floor 1 - W.I.C.



Dimensions: 5'9" x 13'10"  
Area: 79 sq. ft  
Counted as living area: Yes

Heated: Yes  
Finished: Yes  
Enclosed: Yes  
Contiguous: Yes  
Permitted: Yes  
Wet space: No  
Addition: No  
Conversion: No



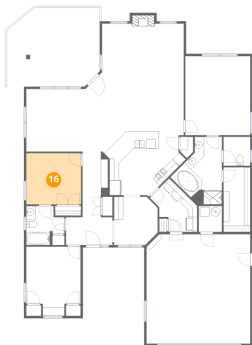
15 Floor 1 - Garage



Dimensions: 22'2" x 23'5"  
Area: 515 sq. ft  
Counted as living area: No

Heated: No  
Finished: No  
Enclosed: Yes  
Contiguous: Yes  
Permitted: Yes  
Wet space: No  
Addition: No  
Conversion: No

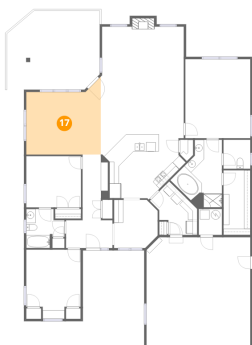
16 Floor 1 - Bedroom



Dimensions: 11'8" x 11'0"  
Area: 128 sq. ft  
Counted as living area: Yes

Heated: Yes  
Finished: Yes  
Enclosed: Yes  
Contiguous: Yes  
Permitted: Yes  
Wet space: No  
Addition: No  
Conversion: No

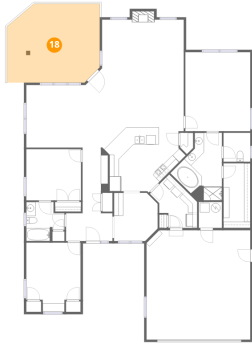
17 Floor 1 - Dining Area



Dimensions: 15'11" x 16'5"  
Area: 218 sq. ft  
Counted as living area: Yes

Heated: Yes  
Finished: Yes  
Enclosed: Yes  
Contiguous: Yes  
Permitted: Yes  
Wet space: No  
Addition: No  
Conversion: No

## 18 Floor 1 - Covered Deck



**Dimensions:** 19'10" x 16'10"

**Area:** 315 sq. ft

**Counted as living area:** No

**Heated:** No

**Finished:** No

**Enclosed:** No

**Contiguous:** Yes

**Permitted:** Yes

**Wet space:** No

**Addition:** No

**Conversion:** No