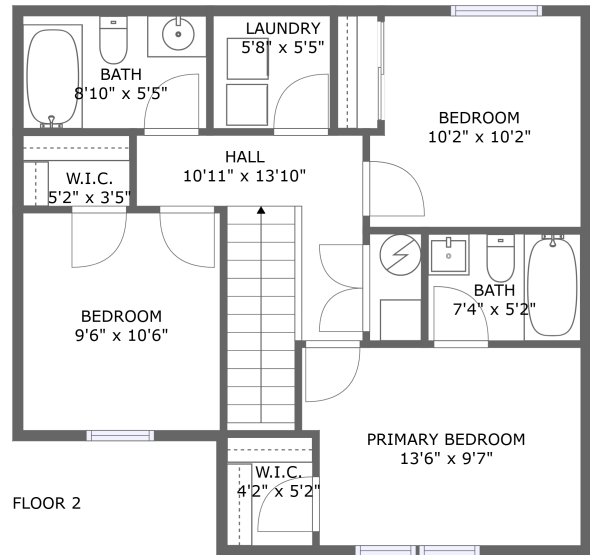
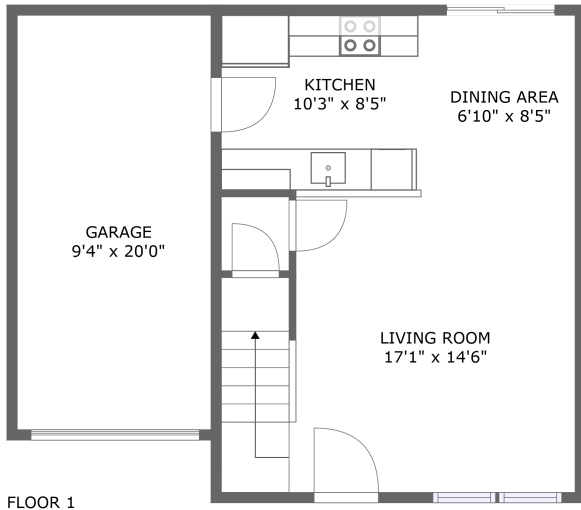


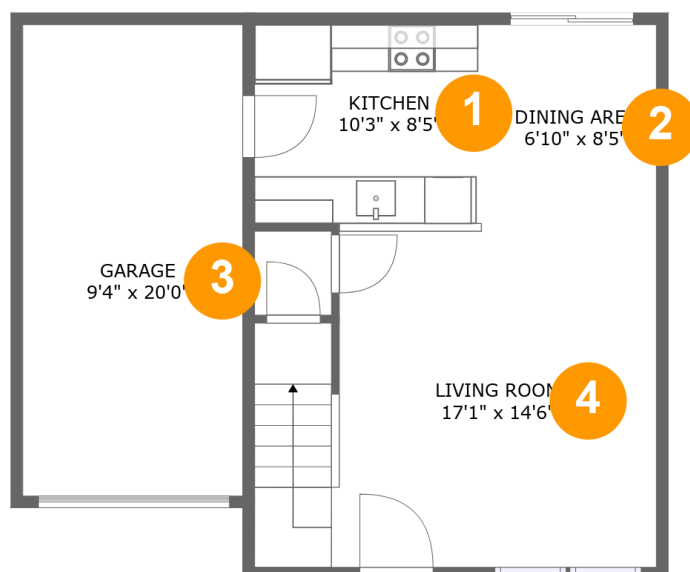
# 10436 Forester Pl, Longmont, CO, US



## Property Summary

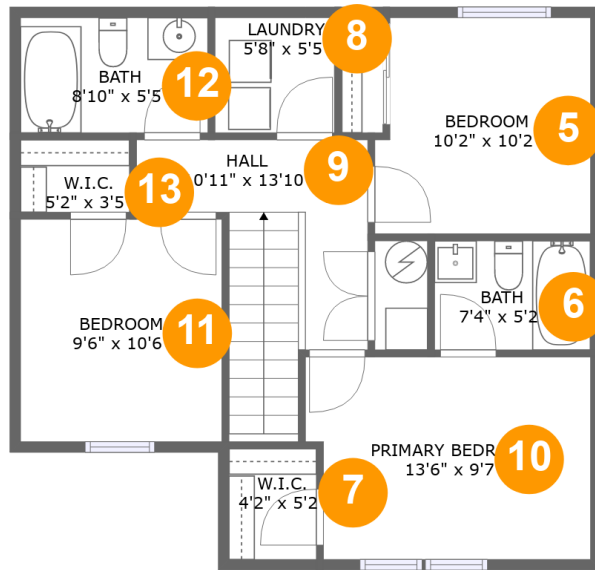
**1** garages    **3** bedrooms    **2** bathrooms    **0** half baths

**2** floors    **1,121** Gross Living Area sqft    **1,328** total sqft

**10436 Forester Pl, Longmont, CO, US****Room Dimensions****Floor 1****Total sqft: 641****Living area: 434**

#	Room name	Dimensions	Area (sqft)	Counted as Living Area
1	Kitchen	10'3" x 8'5"	86 sq. ft	Yes
2	Dining Area	6'10" x 8'5"	58 sq. ft	Yes
3	Garage	9'4" x 20'0"	187 sq. ft	No
4	Living Room	17'1" x 14'6"	233 sq. ft	Yes

# 10436 Forester Pl, Longmont, CO, US



## Room Dimensions

Floor 2

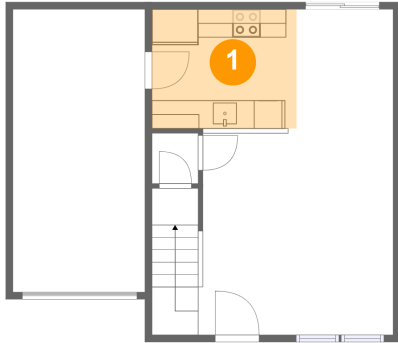
Total sqft: 687

Living area: 687

#	Room name	Dimensions	Area (sqft)	Counted as Living Area
5	Bedroom	10'2" x 10'2"	100 sq. ft	Yes
6	Bath	7'4" x 5'2"	38 sq. ft	Yes
7	W.i.c.	4'2" x 5'2"	22 sq. ft	Yes
8	Laundry	5'8" x 5'5"	31 sq. ft	Yes
9	Hall	10'11" x 13'10"	94 sq. ft	Yes
10	Primary Bedroom	13'6" x 9'7"	124 sq. ft	Yes
11	Bedroom	9'6" x 10'6"	100 sq. ft	Yes
12	Bath	8'10" x 5'5"	48 sq. ft	Yes
13	W.i.c.	5'2" x 3'5"	18 sq. ft	Yes

# 10436 Forester Pl, Longmont, CO, US

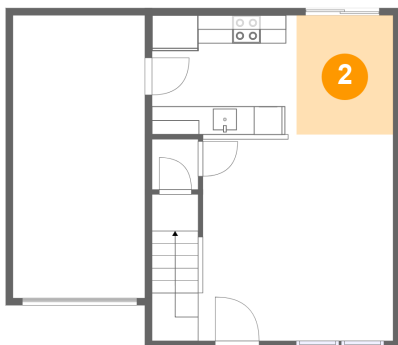
## 1 Floor 1 - Kitchen



Dimensions: 10'3" x 8'5"  
Area: 86 sq. ft  
Counted as Living Area:  
Yes

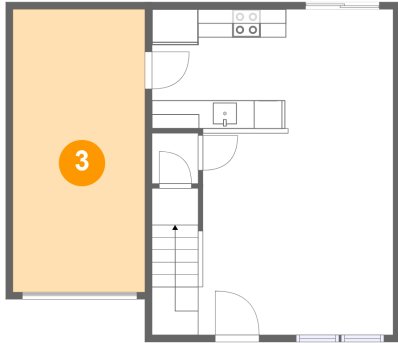
Heated: Yes  
Finished: Yes  
Enclosed: Yes  
Contiguous:  
Yes  
Permitted: Yes  
Wet Space: No  
Addition: No  
Conversion: No

## 2 Floor 1 - Dining Area



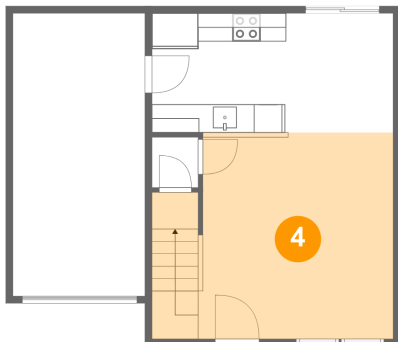
Dimensions: 6'10" x 8'5"  
Area: 58 sq. ft  
Counted as Living Area:  
Yes

Heated: Yes  
Finished: Yes  
Enclosed: Yes  
Contiguous:  
Yes  
Permitted: Yes  
Wet Space: No  
Addition: No  
Conversion: No

**10436 Forester Pl, Longmont, CO, US****3 Floor 1 - Garage**

Dimensions: 9'4" x 20'0"  
Area: 187 sq. ft  
Counted as Living Area: No

Heated: No  
Finished: No  
Enclosed: Yes  
Contiguous: Yes  
Permitted: Yes  
Wet Space: No  
Addition: No  
Conversion: No

**4 Floor 1 - Living Room**

Dimensions: 17'1" x 14'6"  
Area: 233 sq. ft  
Counted as Living Area:  
Yes

Heated: Yes  
Finished: Yes  
Enclosed: Yes  
Contiguous:  
Yes  
Permitted: Yes  
Wet Space: No  
Addition: No  
Conversion: No

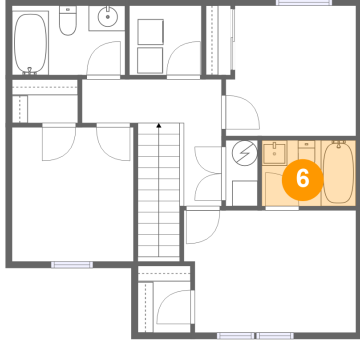
**5 Floor 2 - Bedroom**

Dimensions: 10'2" x 10'2"  
Area: 100 sq. ft  
Counted as Living Area:  
Yes

Heated: Yes  
Finished: Yes  
Enclosed: Yes  
Contiguous:  
Yes  
Permitted: Yes  
Wet Space: No  
Addition: No  
Conversion: No

# 10436 Forester Pl, Longmont, CO, US

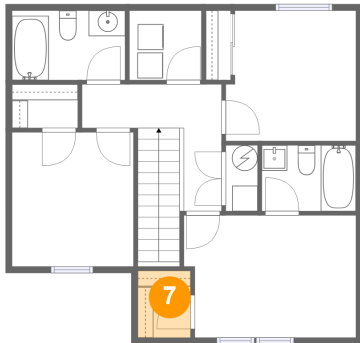
## 6 Floor 2 - Bath



Dimensions: 7'4" x 5'2"  
Area: 38 sq. ft  
Counted as Living Area:  
Yes

Heated: Yes  
Finished: Yes  
Enclosed: Yes  
Contiguous:  
Yes  
Permitted: Yes  
Wet Space: Yes  
Addition: No  
Conversion: No

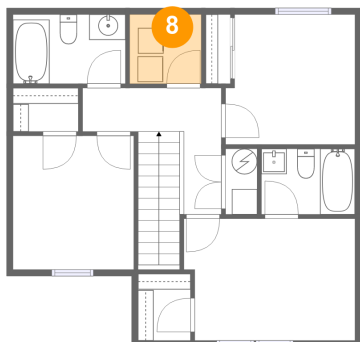
## 7 Floor 2 - W.i.c.



Dimensions: 4'2" x 5'2"  
Area: 22 sq. ft  
Counted as Living Area:  
Yes

Heated: Yes  
Finished: Yes  
Enclosed: Yes  
Contiguous:  
Yes  
Permitted: Yes  
Wet Space: No  
Addition: No  
Conversion: No

## 8 Floor 2 - Laundry

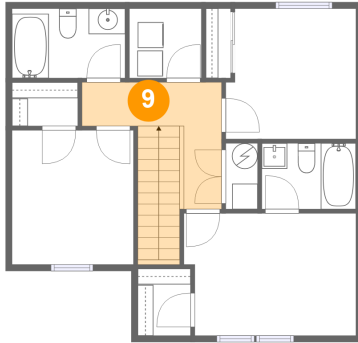


Dimensions: 5'8" x 5'5"  
Area: 31 sq. ft  
Counted as Living Area:  
Yes

Heated: Yes  
Finished: Yes  
Enclosed: Yes  
Contiguous:  
Yes  
Permitted: Yes  
Wet Space: No  
Addition: No  
Conversion: No

# 10436 Forester Pl, Longmont, CO, US

## 9 Floor 2 - Hall



Dimensions: 10'11" x 13'10"  
Area: 94 sq. ft  
Counted as Living Area:  
Yes

Heated: Yes  
Finished: Yes  
Enclosed: Yes  
Contiguous:  
Yes  
Permitted: Yes  
Wet Space: No  
Addition: No  
Conversion: No

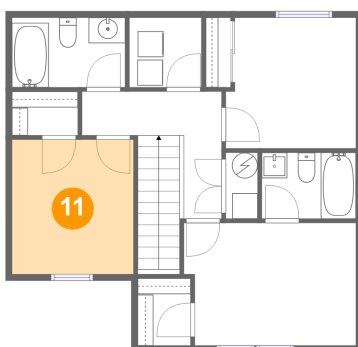
## 10 Floor 2 - Primary Bedroom



Dimensions: 13'6" x 9'7"  
Area: 124 sq. ft  
Counted as Living Area:  
Yes

Heated: Yes  
Finished: Yes  
Enclosed: Yes  
Contiguous:  
Yes  
Permitted: Yes  
Wet Space: No  
Addition: No  
Conversion: No

## 11 Floor 2 - Bedroom



Dimensions: 9'6" x 10'6"  
Area: 100 sq. ft  
Counted as Living Area:  
Yes

Heated: Yes  
Finished: Yes  
Enclosed: Yes  
Contiguous:  
Yes  
Permitted: Yes  
Wet Space: No  
Addition: No  
Conversion: No

# 10436 Forester Pl, Longmont, CO, US

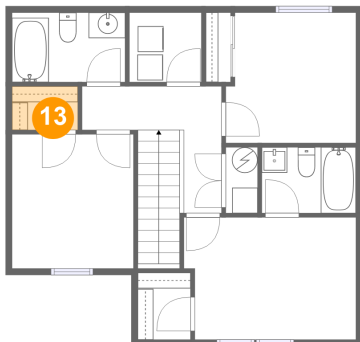
## 12 Floor 2 - Bath



Dimensions: 8'10" x 5'5"  
Area: 48 sq. ft  
Counted as Living Area:  
Yes

Heated: Yes  
Finished: Yes  
Enclosed: Yes  
Contiguous:  
Yes  
Permitted: Yes  
Wet Space: Yes  
Addition: No  
Conversion: No

## 13 Floor 2 - W.i.c.



Dimensions: 5'2" x 3'5"  
Area: 18 sq. ft  
Counted as Living Area:  
Yes

Heated: Yes  
Finished: Yes  
Enclosed: Yes  
Contiguous:  
Yes  
Permitted: Yes  
Wet Space: No  
Addition: No  
Conversion: No