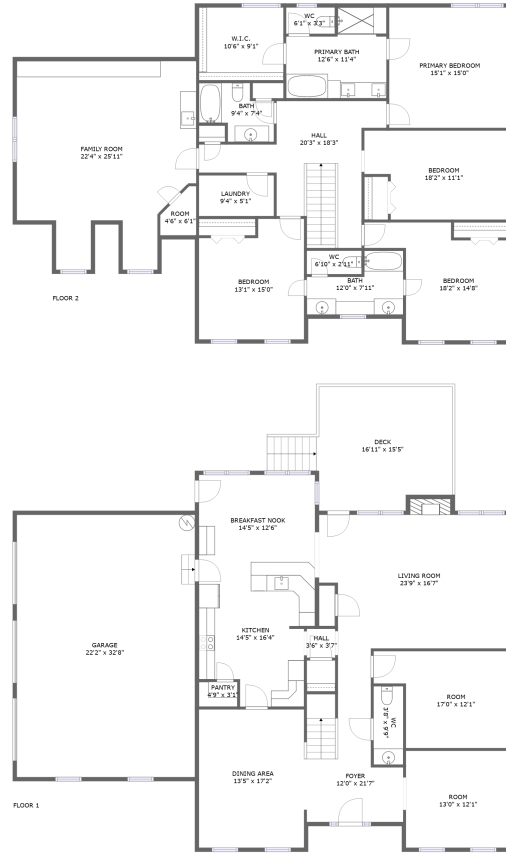


2896 Hampton Cove Way Southeast, Hampton Cove, Owens Cross Roads, Madison County,



Property Summary

 **1** garages  **4** bedrooms  **3** bathrooms  **1** half baths

 **2** floors  **3,807** Gross Living Area sqft  **4,957** total sqft

2896 Hampton Cove Way Southeast, Hampton Cove, Owens Cross Roads, Madison County,



Room Dimensions

Floor 1

Total sqft: 2768

Living area: 1723

#	Room name	Dimensions	Area (sqft)	Counted as Living Area
1	Wc	3'8" x 9'9"	36 sq. ft	Yes
2	Foyer	12'0" x 21'7"	176 sq. ft	Yes
3	Breakfast Nook	14'5" x 12'6"	180 sq. ft	Yes
4	Room	17'0" x 12'11"	173 sq. ft	Yes
5	Garage	22'2" x 32'8"	722 sq. ft	No
6	Deck	16'11" x 15'5"	272 sq. ft	No
7	Kitchen	14'5" x 16'4"	205 sq. ft	Yes
8	Living Room	23'9" x 16'7"	386 sq. ft	Yes
9	Pantry	4'9" x 3'1"	15 sq. ft	Yes
10	Hall	3'6" x 3'7"	13 sq. ft	Yes
11	Dining Area	13'5" x 17'2"	228 sq. ft	Yes

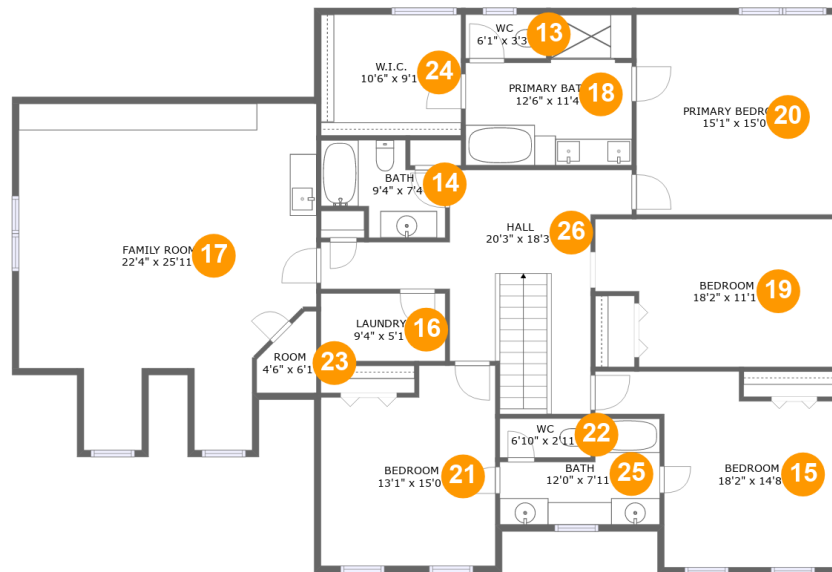
Scan captured on Mon, 07 Oct 2024 15:23:35 GMT

Information is calculated by CubiCasa technology; deemed highly reliable but not guaranteed.

**2896 Hampton Cove Way Southeast, Hampton
Cove, Owens Cross Roads, Madison County,**

#	Room name	Dimensions	Area (sqft)	Counted as Living Area
12	Room	13'0" x 12'1"	156 sq. ft	Yes

2896 Hampton Cove Way Southeast, Hampton Cove, Owens Cross Roads, Madison County,



Room Dimensions

Floor 2

Total sqft: 2189

Living area: 2084

#	Room name	Dimensions	Area (sqft)	Counted as Living Area
13	Wc	6'1" x 3'3"	20 sq. ft	Yes
14	Bath	9'4" x 7'4"	53 sq. ft	Yes
15	Bedroom	18'2" x 14'8"	190 sq. ft	Yes
16	Laundry	9'4" x 5'1"	47 sq. ft	Yes
17	Family Room	22'4" x 25'11"	416 sq. ft	Yes
18	Primary Bath	12'6" x 11'4"	117 sq. ft	Yes
19	Bedroom	18'2" x 11'1"	182 sq. ft	Yes
20	Primary Bedroom	15'1" x 15'0"	225 sq. ft	Yes
21	Bedroom	13'1" x 15'0"	179 sq. ft	Yes
22	Wc	6'10" x 2'11"	20 sq. ft	Yes
23	Room	4'6" x 6'1"	5 sq. ft	No

Scan captured on Mon, 07 Oct 2024 15:23:35 GMT

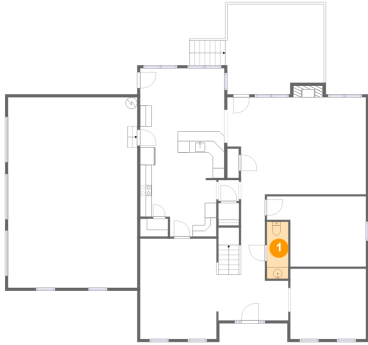
Information is calculated by CubiCasa technology; deemed highly reliable but not guaranteed.

**2896 Hampton Cove Way Southeast, Hampton
Cove, Owens Cross Roads, Madison County,**

#	Room name	Dimensions	Area (sqft)	Counted as Living Area
24	W.i.c.	10'6" x 9'1"	95 sq. ft	Yes
25	Bath	12'0" x 7'11"	72 sq. ft	Yes
26	Hall	20'3" x 18'3"	223 sq. ft	Yes

2896 Hampton Cove Way Southeast, Hampton Cove, Owens Cross Roads, Madison County,

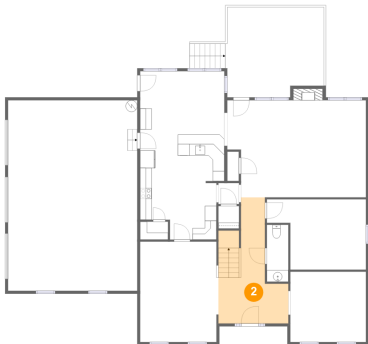
1 Floor 1 - Wc



Dimensions: 3'8" x 9'9"
Area: 36 sq. ft
Counted as Living Area:
Yes

Heated: Yes
Finished: Yes
Enclosed: Yes
Contiguous:
Yes
Permitted: Yes
Wet Space: Yes
Addition: No
Conversion: No

2 Floor 1 - Foyer

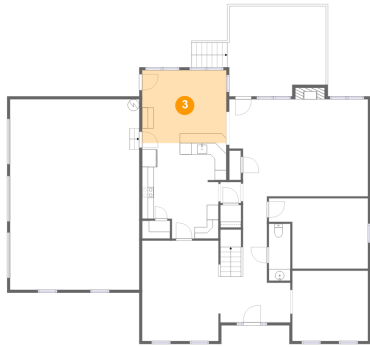


Dimensions: 12'0" x 21'7"
Area: 176 sq. ft
Counted as Living Area:
Yes

Heated: Yes
Finished: Yes
Enclosed: Yes
Contiguous:
Yes
Permitted: Yes
Wet Space: No
Addition: No
Conversion: No

2896 Hampton Cove Way Southeast, Hampton Cove, Owens Cross Roads, Madison County,

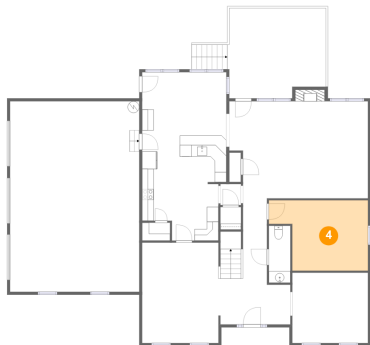
3 Floor 1 - Breakfast Nook



Dimensions: 14'5" x 12'6"
Area: 180 sq. ft
Counted as Living Area:
Yes

Heated: Yes
Finished: Yes
Enclosed: Yes
Contiguous:
Yes
Permitted: Yes
Wet Space: No
Addition: No
Conversion: No

4 Floor 1 - Room



Dimensions: 17'0" x 12'1"
Area: 173 sq. ft
Counted as Living Area:
Yes

Heated: Yes
Finished: Yes
Enclosed: Yes
Contiguous:
Yes
Permitted: Yes
Wet Space: No
Addition: No
Conversion: No

5 Floor 1 - Garage



Dimensions: 22'2" x 32'8"
Area: 722 sq. ft
Counted as Living Area: No

Heated: No
Finished: No
Enclosed: Yes
Contiguous: Yes
Permitted: Yes
Wet Space: No
Addition: No
Conversion: No

2896 Hampton Cove Way Southeast, Hampton Cove, Owens Cross Roads, Madison County,

6 Floor 1 - Deck



Dimensions: 16'11" x 15'5"
Area: 272 sq. ft
Counted as Living Area: No

Heated: No
Finished: Yes
Enclosed: No
Contiguous: Yes
Permitted: Yes
Wet Space: No
Addition: No
Conversion: No

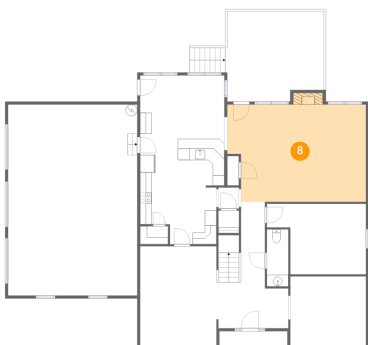
7 Floor 1 - Kitchen



Dimensions: 14'5" x 16'4"
Area: 205 sq. ft
Counted as Living Area: Yes

Heated: Yes
Finished: Yes
Enclosed: Yes
Contiguous: Yes
Permitted: Yes
Wet Space: No
Addition: No
Conversion: No

8 Floor 1 - Living Room

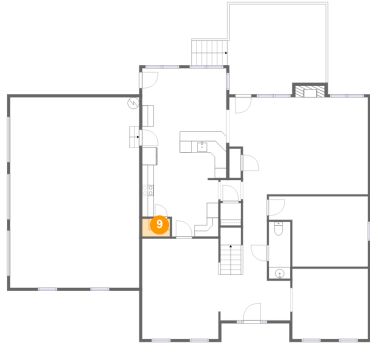


Dimensions: 23'9" x 16'7"
Area: 386 sq. ft
Counted as Living Area: Yes

Heated: Yes
Finished: Yes
Enclosed: Yes
Contiguous: Yes
Permitted: Yes
Wet Space: No
Addition: No
Conversion: No

2896 Hampton Cove Way Southeast, Hampton Cove, Owens Cross Roads, Madison County,

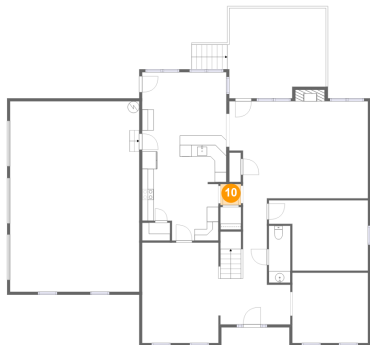
9 Floor 1 - Pantry



Dimensions: 4'9" x 3'1"
Area: 15 sq. ft
Counted as Living Area:
Yes

Heated: Yes
Finished: Yes
Enclosed: Yes
Contiguous:
Yes
Permitted: Yes
Wet Space: No
Addition: No
Conversion: No

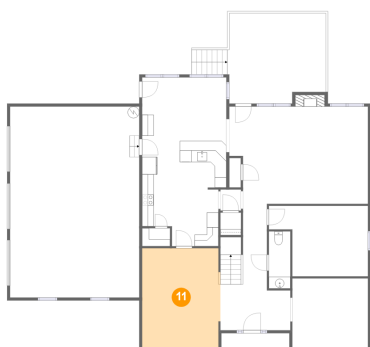
10 Floor 1 - Hall



Dimensions: 3'6" x 3'7"
Area: 13 sq. ft
Counted as Living Area:
Yes

Heated: Yes
Finished: Yes
Enclosed: Yes
Contiguous:
Yes
Permitted: Yes
Wet Space: No
Addition: No
Conversion: No

11 Floor 1 - Dining Area

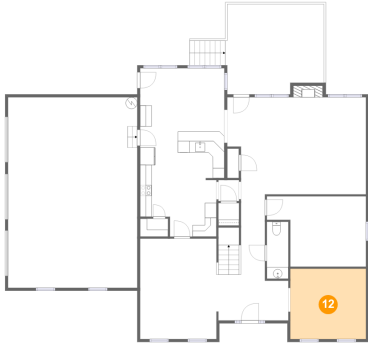


Dimensions: 13'5" x 17'2"
Area: 228 sq. ft
Counted as Living Area:
Yes

Heated: Yes
Finished: Yes
Enclosed: Yes
Contiguous:
Yes
Permitted: Yes
Wet Space: No
Addition: No
Conversion: No

2896 Hampton Cove Way Southeast, Hampton Cove, Owens Cross Roads, Madison County,

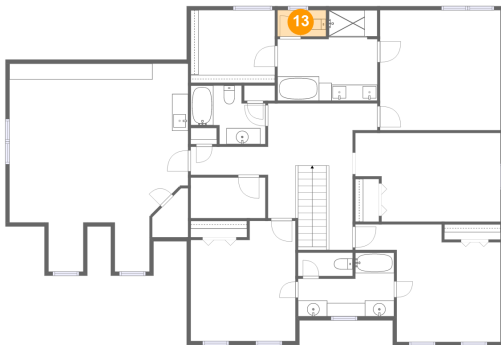
12 Floor 1 - Room



Dimensions: 13'0" x 12'1"
Area: 156 sq. ft
Counted as Living Area:
Yes

Heated: Yes
Finished: Yes
Enclosed: Yes
Contiguous:
Yes
Permitted: Yes
Wet Space: No
Addition: No
Conversion: No

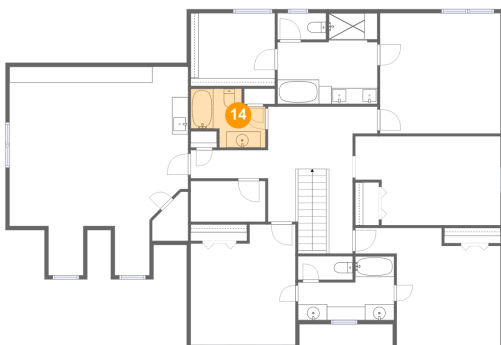
13 Floor 2 - Wc



Dimensions: 6'1" x 3'3"
Area: 20 sq. ft
Counted as Living Area:
Yes

Heated: Yes
Finished: Yes
Enclosed: Yes
Contiguous:
Yes
Permitted: Yes
Wet Space: Yes
Addition: No
Conversion: No

14 Floor 2 - Bath



Dimensions: 9'4" x 7'4"
Area: 53 sq. ft
Counted as Living Area:
Yes

Heated: Yes
Finished: Yes
Enclosed: Yes
Contiguous:
Yes
Permitted: Yes
Wet Space: Yes
Addition: No
Conversion: No

2896 Hampton Cove Way Southeast, Hampton Cove, Owens Cross Roads, Madison County,

15 Floor 2 - Bedroom



Dimensions: 18'2" x 14'8"
Area: 190 sq. ft
Counted as Living Area:
Yes

Heated: Yes
Finished: Yes
Enclosed: Yes
Contiguous:
Yes
Permitted: Yes
Wet Space: No
Addition: No
Conversion: No

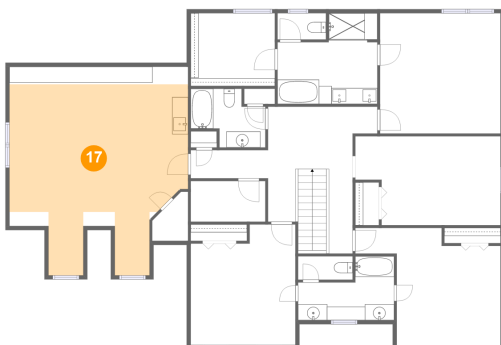
16 Floor 2 - Laundry



Dimensions: 9'4" x 5'1"
Area: 47 sq. ft
Counted as Living Area:
Yes

Heated: Yes
Finished: Yes
Enclosed: Yes
Contiguous:
Yes
Permitted: Yes
Wet Space: No
Addition: No
Conversion: No

17 Floor 2 - Family Room



Dimensions: 22'4" x 25'11"
Area: 416 sq. ft
Counted as Living Area:
Yes

Heated: Yes
Finished: Yes
Enclosed: Yes
Contiguous:
Yes
Permitted: Yes
Wet Space: No
Addition: No
Conversion: No

2896 Hampton Cove Way Southeast, Hampton Cove, Owens Cross Roads, Madison County,

18 Floor 2 - Primary Bath



Dimensions: 12'6" x 11'4"
Area: 117 sq. ft
Counted as Living Area:
Yes

Heated: Yes
Finished: Yes
Enclosed: Yes
Contiguous:
Yes
Permitted: Yes
Wet Space: Yes
Addition: No
Conversion: No

19 Floor 2 - Bedroom



Dimensions: 18'2" x 11'1"
Area: 182 sq. ft
Counted as Living Area:
Yes

Heated: Yes
Finished: Yes
Enclosed: Yes
Contiguous:
Yes
Permitted: Yes
Wet Space: No
Addition: No
Conversion: No

20 Floor 2 - Primary Bedroom



Dimensions: 15'1" x 15'0"
Area: 225 sq. ft
Counted as Living Area:
Yes

Heated: Yes
Finished: Yes
Enclosed: Yes
Contiguous:
Yes
Permitted: Yes
Wet Space: No
Addition: No
Conversion: No

2896 Hampton Cove Way Southeast, Hampton Cove, Owens Cross Roads, Madison County,

21 Floor 2 - Bedroom



Dimensions: 13'1" x 15'0"
Area: 179 sq. ft
Counted as Living Area:
Yes

Heated: Yes
Finished: Yes
Enclosed: Yes
Contiguous:
Yes
Permitted: Yes
Wet Space: No
Addition: No
Conversion: No

22 Floor 2 - Wc



Dimensions: 6'10" x 2'11"
Area: 20 sq. ft
Counted as Living Area:
Yes

Heated: Yes
Finished: Yes
Enclosed: Yes
Contiguous:
Yes
Permitted: Yes
Wet Space: Yes
Addition: No
Conversion: No

23 Floor 2 - Room

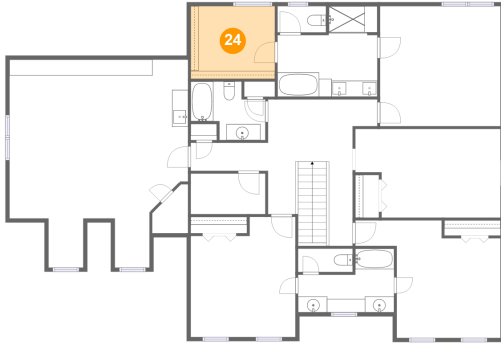


Dimensions: 4'6" x 6'1"
Area: 5 sq. ft
Counted as Living Area: No

Heated: No
Finished: No
Enclosed: Yes
Contiguous: Yes
Permitted: Yes
Wet Space: No
Addition: No
Conversion: No

2896 Hampton Cove Way Southeast, Hampton Cove, Owens Cross Roads, Madison County,

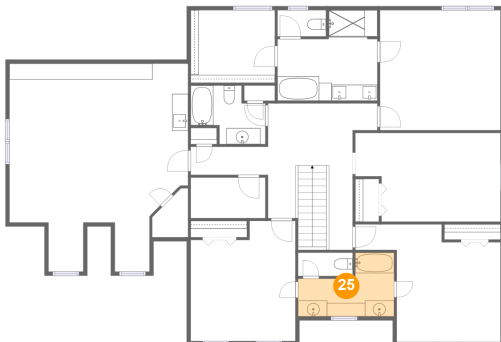
24 Floor 2 - W.i.c.



Dimensions: 10'6" x 9'1"
Area: 95 sq. ft
Counted as Living Area:
Yes

Heated: Yes
Finished: Yes
Enclosed: Yes
Contiguous:
Yes
Permitted: Yes
Wet Space: No
Addition: No
Conversion: No

25 Floor 2 - Bath



Dimensions: 12'0" x 7'11"
Area: 72 sq. ft
Counted as Living Area:
Yes

Heated: Yes
Finished: Yes
Enclosed: Yes
Contiguous:
Yes
Permitted: Yes
Wet Space: Yes
Addition: No
Conversion: No

26 Floor 2 - Hall



Dimensions: 20'3" x 18'3"
Area: 223 sq. ft
Counted as Living Area:
Yes

Heated: Yes
Finished: Yes
Enclosed: Yes
Contiguous:
Yes
Permitted: Yes
Wet Space: No
Addition: No
Conversion: No