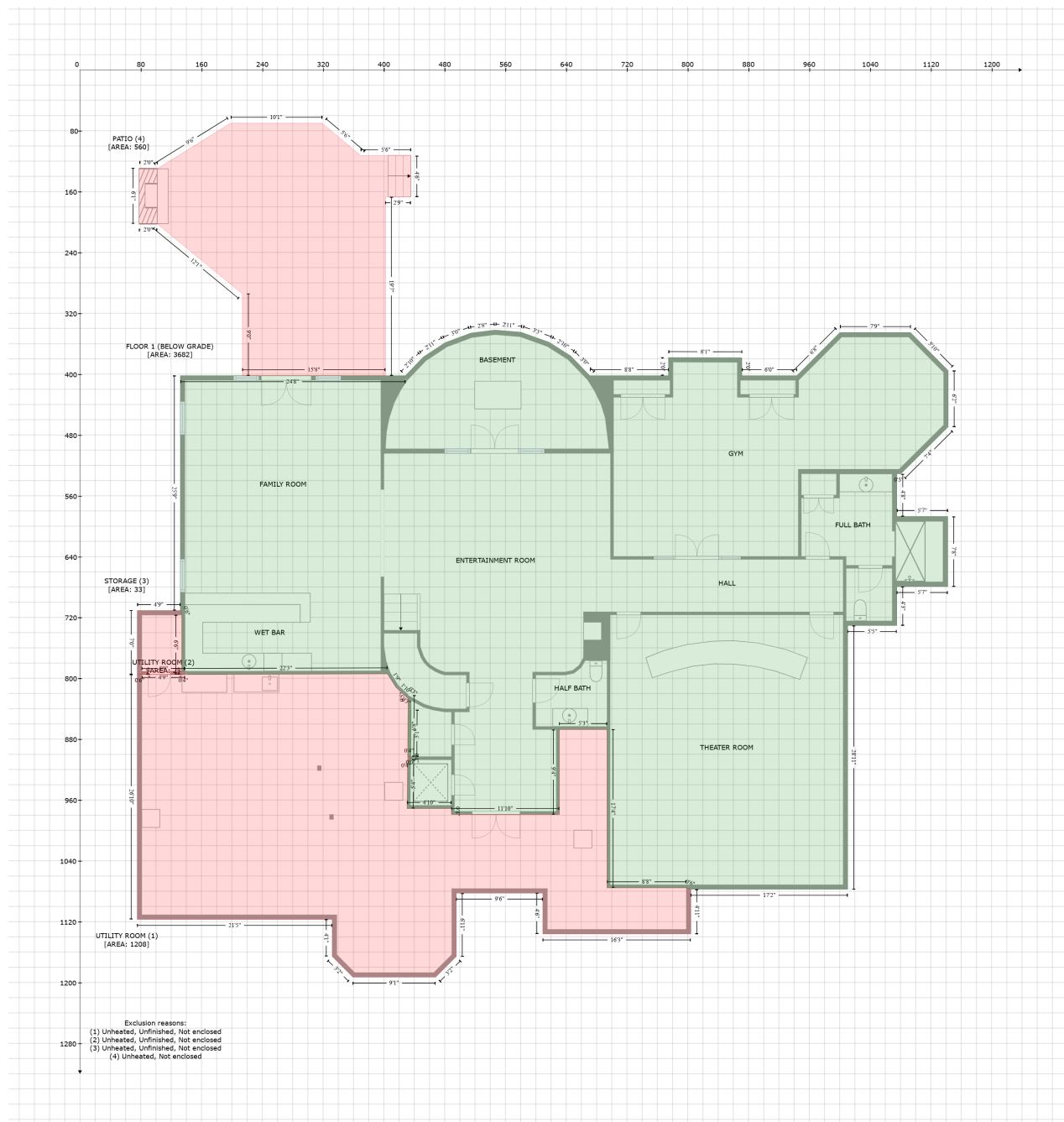


1412 Hedgelawn Way, North Raleigh, Raleigh, Wake County, North Carolina, United States, 27615

Gross Living Area: 12801 sq. ft



Space	Area (sq. ft)	Calculation
FLOOR 1 (BELOW GRADE) (Living area)	3682	Coordinate Polygon Area Algorithm using inches $-((546.3 + 580.8) * (342.1 - 345) + (580.8 + 617.7) * (345 - 358.2) + (617.7 + 646.1) * (358.2 - 376.2) + (646.1 + 671.1) * (376.2 - 402.1) + (671.1 + 774.7) * (402.1 - 402.1) + (774.7 + 774.7) * (402.1 - 378.3) + (774.7 + 871.3) * (378.3 - 378.5) + (871.3 + 871.3) * (378.5 - 402.1) + (871.3 + 943.5) * (402.1 - 402.1) + (943.5 + 1000.2) * (402.1 - 345.4) + (1000.2 + 1093.2) * (345.4 - 345.4) + (1093.2 + 1142.8) * (345.4 - 395.4) + (1142.8 + 1142.8) * (395.4 - 469.4) + (1142.8 + 1080.6) * (469.4 - 531.1) + (1080.6 + 1075.2) * (531.1 - 531.1) + (1075.2 + 1075.2) * (531.1 - 587.2) + (1075.2 + 1142.2) * (587.2 - 587.2) + (1142.2 + 1142.2) * (587.2 - 679.3) + (1142.2 + 1075.2) *$

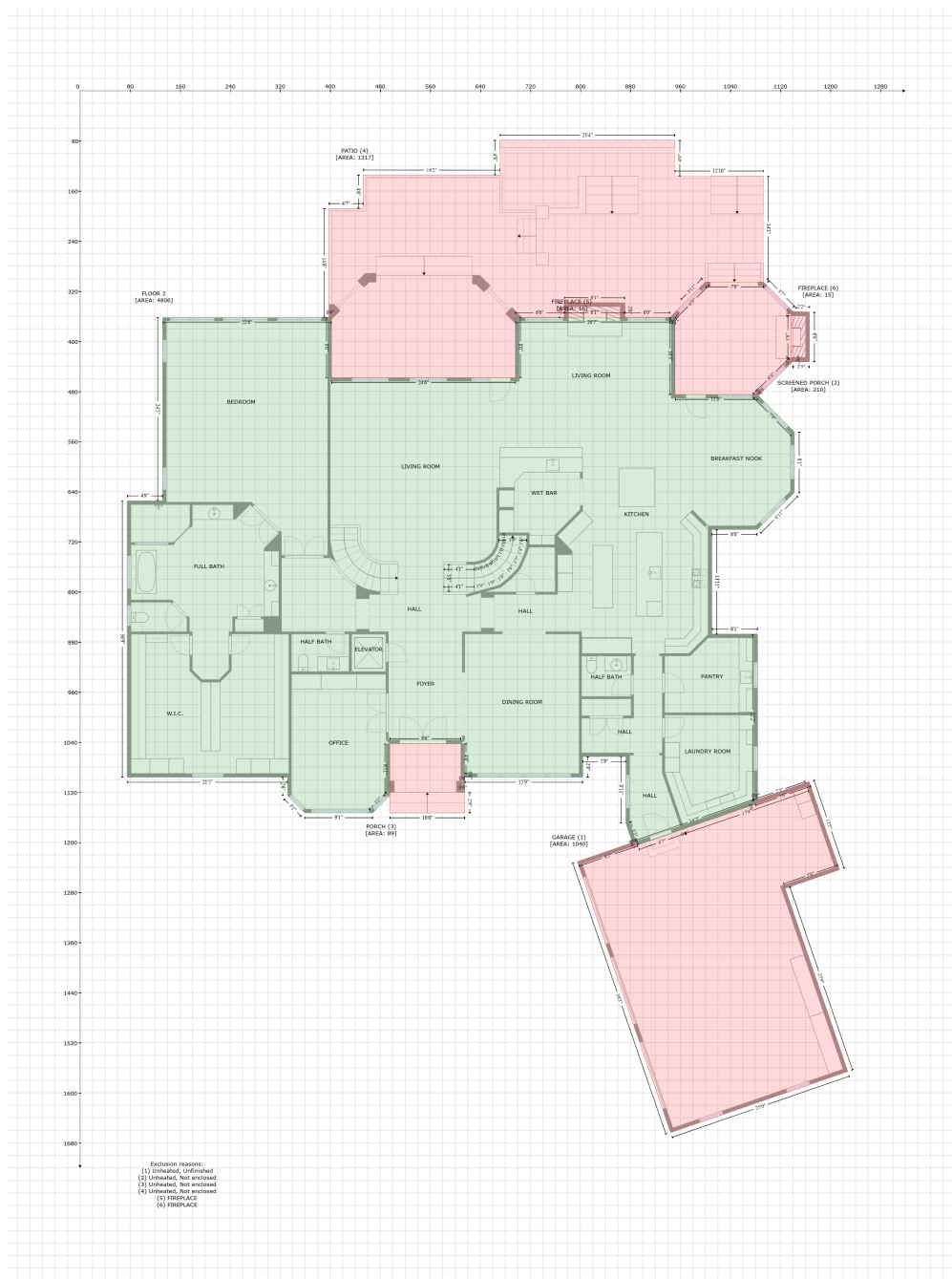
1412 Hedgelawn Way, North Raleigh, Raleigh, Wake County, North Carolina, United States, 27615

Gross Living Area: 12801 sq. ft

Space	Area (sq. ft)	Calculation <small>Coordinate Polygon Area Algorithm using inches</small>
		$(679.3 - 679.3) + (1075.2 + 1075.2) * (679.3 - 730.6) + (1075.2 + 1010.5) * (730.6 - 730.6) + (1010.5 + 1010.5) * (730.6 - 1077.5) + (1010.5 + 804.1) * (1077.5 - 1077.5) + (804.1 + 798.1) * (1077.5 - 1075.5) + (798.1 + 693.8) * (1075.5 - 1075.5) + (693.8 + 693.8) * (1075.5 - 867.4) + (693.8 + 631) * (867.4 - 867.4) + (631 + 631) * (867.4 - 979) + (631 + 489) * (979 - 979) + (489 + 489) * (979 - 971.3) + (489 + 430.7) * (971.3 - 971.3) + (430.7 + 431.5) * (971.3 - 907) + (431.5 + 435.3) * (907 - 907) + (435.3 + 435.3) * (907 - 903) + (435.3 + 435.5) * (903 - 903) + (435.5 + 435.9) * (903 - 841.7) + (435.9 + 435.3) * (841.7 - 903) + (435.3 + 431.5) * (903 - 903) + (431.5 + 432) * (903 - 827.1) + (432 + 415.9) * (827.1 - 811.8) + (415.9 + 405.2) * (811.8 - 795) + (405.2 + 404.7) * (795 - 794.2) + (404.7 + 143.9) * (794.2 - 795) + (143.9 + 138) * (795 - 791) + (138 + 134.1) * (791 - 791) + (134.1 + 134.1) * (791 - 716.9) + (134.1 + 132.1) * (716.9 - 710.9) + (132.1 + 132.1) * (710.9 - 402.1) + (132.1 + 213.9) * (402.1 - 402.1) + (213.9 + 213.9) * (402.1 - 402.3) + (213.9 + 402.1) * (402.3 - 402.1) + (402.1 + 428.3) * (402.1 - 402.1) + (428.3 + 451.6) * (402.1 - 377.8) + (451.6 + 480.5) * (377.8 - 358.8) + (480.5 + 514.5) * (358.8 - 346.1) + (514.5 + 546.3) * (346.1 - 342.1) * 0.5 * 0.00694 - ((432.1 + 432.1) * (821.6 - 822.5) + (432.1 + 434.4) * (822.5 - 823.8) + (434.4 + 432.1) * (823.8 - 821.6)) * 0.5 * 0.00694$
UTILITY ROOM (Non-living area)	1208	$-((404.7 + 415.9) * (794.2 - 811.8) + (415.9 + 432.1) * (811.8 - 827.1) + (432.1 + 431.5) * (827.1 - 903) + (431.5 + 435.3) * (903 - 903) + (435.3 + 435.3) * (903 - 907) + (435.3 + 431.5) * (907 - 907) + (431.5 + 430.7) * (907 - 971.3) + (430.7 + 489) * (971.3 - 971.3) + (489 + 489) * (971.3 - 979) + (489 + 631) * (979 - 979) + (631 + 631) * (979 - 867.4) + (631 + 693.8) * (867.4 - 867.4) + (693.8 + 693.8) * (867.4 - 1075.5) + (693.8 + 798.1) * (1075.5 - 1075.5) + (798.1 + 804.1) * (1075.5 - 1077.5) + (804.1 + 804.1) * (1077.5 - 1136.2) + (804.1 + 609.3) * (1136.2 - 1136.2) + (609.3 + 609.3) * (1136.2 - 1082.5) + (609.3 + 495.3) * (1082.5 - 1082.5) + (495.3 + 495.3) * (1082.5 - 1165.8) + (495.3 + 468.2) * (1165.8 - 1193) + (468.2 + 359.2) * (1193 - 1193) + (359.2 + 332.1) * (1193 - 1165.8) + (332.1 + 332.1) * (1165.8 - 1117) + (332.1 + 75.4) * (1117 - 1117) + (75.4 + 75.4) * (1117 - 795.1) + (75.4 + 81.4) * (795.1 - 795.1) + (81.4 + 404.7) * (795.1 - 794.2)) * 0.5 * 0.00694$
UTILITY ROOM (Non-living area)	2	$-((138 + 138) * (791 - 795) + (138 + 81.4) * (795 - 795.1) + (81.4 + 81.4) * (795.1 - 791.1) + (81.4 + 138) * (791.1 - 791)) * 0.5 * 0.00694$
STORAGE (Non-living area)	33	$-((132.1 + 134.1) * (710.9 - 716.9) + (134.1 + 134) * (716.9 - 790.9) + (134 + 81.4) * (790.9 - 791.1) + (81.4 + 81.4) * (791.1 - 795.1) + (81.4 + 75.4) * (795.1 - 795.1) + (75.4 + 75.4) * (795.1 - 710.9) + (75.4 + 132.1) * (710.9 - 710.9)) * 0.5 * 0.00694$
PATIO (Non-living area)	560	$-((318.8 + 369.6) * (70.1 - 112.8) + (369.6 + 435.5) * (112.8 - 112.8) + (435.5 + 435.5) * (112.8 - 166.9) + (435.5 + 402.1) * (166.9 - 166.9) + (402.1 + 402.1) * (166.9 - 402.1) + (402.1 + 213.9) * (402.1 - 402.3) + (213.9 + 213.9) * (402.3 - 294.5) + (213.9 + 101.7) * (294.5 - 202.3) + (101.7 + 77.9) * (202.3 - 202.5) + (77.9 + 77.9) * (202.5 - 129.3) + (77.9 + 101.7) * (129.3 - 130.1) + (101.7 + 198.3) * (130.1 - 70.1) + (198.3 + 318.8) * (70.1 - 70.1)) * 0.5 * 0.00694$

1412 Hedgelawn Way, North Raleigh, Raleigh, Wake County, North Carolina, United States, 27615

Gross Living Area: 12801 sq. ft



Space	Area (sq. ft)	Calculation
FLOOR 2 (Living area)	4806	Coordinate Polygon Area Algorithm using inches $ \begin{aligned} & -((947.1 + 950.6) * (358.5 - 362.1) + (950.6 + 951.4) * (362.1 - 362.7) + (951.4 + 951.4) * (362.7 - \\ & 426.9) + (951.4 + 951.4) * (426.9 - 485.1) + (951.4 + 1078) * (485.1 - 485.2) + (1078 + 1082.2) * \\ & (485.2 - 489.4) + (1082.2 + 1084.8) * (489.4 - 486.7) + (1084.8 + 1142.2) * (486.7 - 544.7) + \\ & (1142.2 + 1142.2) * (544.7 - 641.8) + (1142.2 + 1083) * (641.8 - 700.6) + (1083 + 1010.5) * \\ & (700.6 - 700.6) + (1010.5 + 1010.5) * (700.6 - 867.6) + (1010.5 + 1083.6) * (867.6 - 867.6) + \\ & (1083.6 + 1083.6) * (867.6 - 1131.6) + (1083.6 + 1077.7) * (1131.6 - 1133.6) + (1077.7 + 1079.7) \\ & * (1133.6 - 1139.2) + (1079.7 + 965.5) * (1139.2 - 1178.4) + (965.5 + 965.8) * (1178.4 - 1178.5) + \end{aligned} $

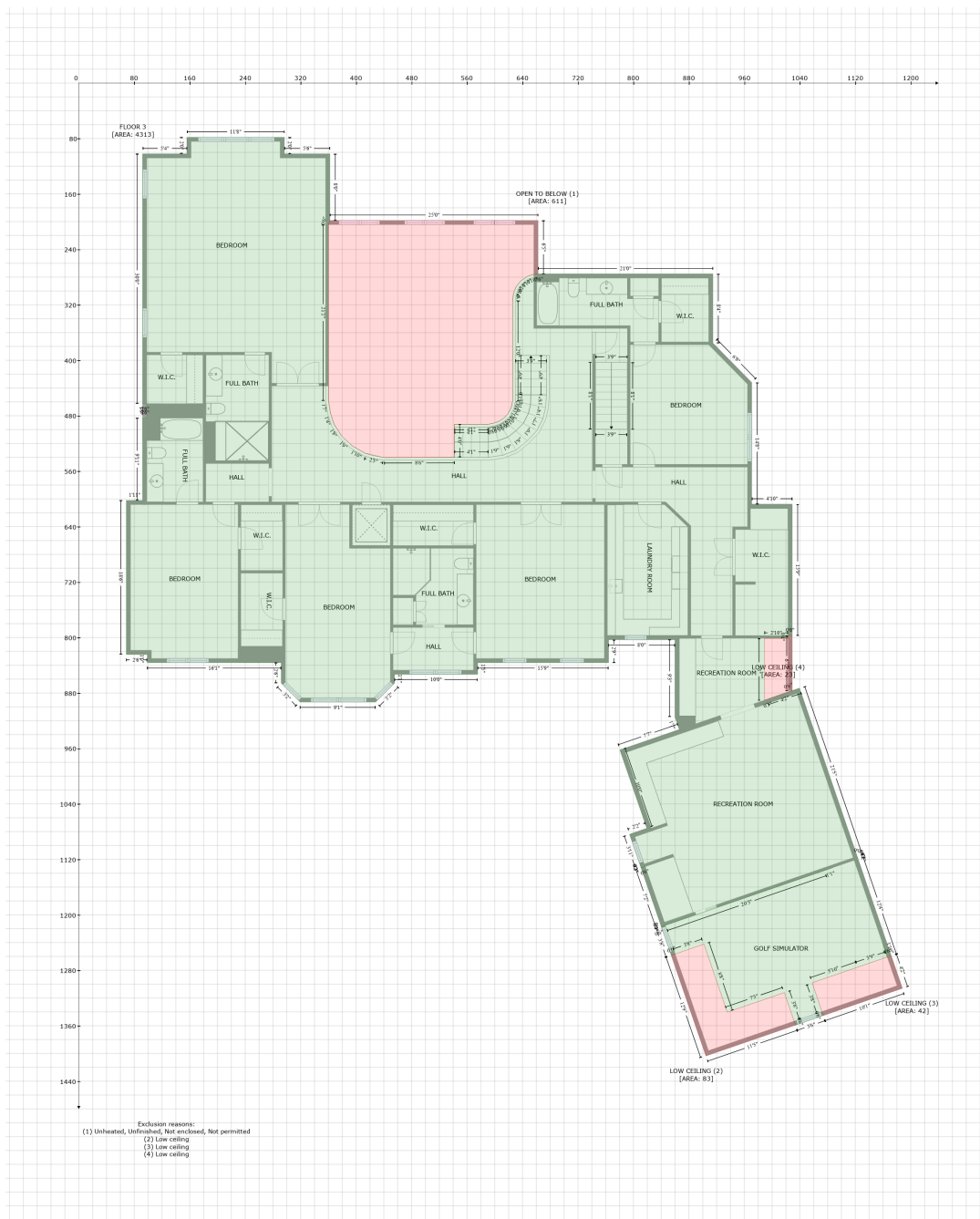
1412 Hedgelawn Way, North Raleigh, Raleigh, Wake County, North Carolina, United States, 27615

Gross Living Area: 12801 sq. ft

Space	Area (sq. ft)	Calculation <small>Coordinate Polygon Area Algorithm using inches</small>
		$(965.8 + 891.1) * (1178.5 - 1204) + (891.1 + 889.1) * (1204 - 1198.5) + (889.1 + 883.6) * (1198.5 - 1200.5) + (883.6 + 873) * (1200.5 - 1169.7) + (873 + 873) * (1169.7 - 1063.1) + (873 + 804.1) * (1063.1 - 1063.1) + (804.1 + 804.1) * (1063.1 - 1096.2) + (804.1 + 615.3) * (1096.2 - 1096.2) + (615.3 + 615.3) * (1096.2 - 1090.2) + (615.3 + 609.3) * (1090.2 - 1090.2) + (609.3 + 609.3) * (1090.2 - 1042.5) + (609.3 + 495.3) * (1042.5 - 1042.5) + (495.3 + 495.3) * (1042.5 - 1125.8) + (495.3 + 468.2) * (1125.8 - 1153) + (468.2 + 359.2) * (1153 - 1153) + (359.2 + 332.1) * (1153 - 1125.8) + (332.1 + 332.1) * (1125.8 - 1096.2) + (332.1 + 75.4) * (1096.2 - 1096.2) + (75.4 + 75.4) * (1096.2 - 654.8) + (75.4 + 132.1) * (654.8 - 654.8) + (132.1 + 132.1) * (654.8 - 362.1) + (132.1 + 402.1) * (362.1 - 362.1) + (402.1 + 402.1) * (362.1 - 458.3) + (402.1 + 696.3) * (458.3 - 458.3) + (696.3 + 696.3) * (458.3 - 362.1) + (696.3 + 943.6) * (362.1 - 362.1) + (943.6 + 947.1) * (362.1 - 358.5) * 0.5 * 0.00694$
GARAGE (Non-living area)	1040	$-((1166.1 + 1214.6) * (1103.1 - 1243.8) + (1214.6 + 1127.7) * (1243.8 - 1273.7) + (1127.7 + 1227.9) * (1273.7 - 1566) + (1227.9 + 944.5) * (1566 - 1663.6) + (944.5 + 795.5) * (1663.6 - 1230.8) + (795.5 + 889.1) * (1230.8 - 1198.5) + (889.1 + 891.1) * (1198.5 - 1204.2) + (891.1 + 965.8) * (1204.2 - 1178.5) + (965.8 + 965.9) * (1178.5 - 1178.4) + (965.9 + 1162.4) * (1178.4 - 1110.7) + (1162.4 + 1079.7) * (1110.7 - 1139.1) + (1079.7 + 1077.7) * (1139.1 - 1133.6) + (1077.7 + 1166.1) * (1133.6 - 1103.1)) * 0.5 * 0.00694$
SCREENED PORCH (Non-living area)	210	$-((1093.2 + 1140.2) * (305.4 - 352.5) + (1140.2 + 1140) * (352.5 - 358.5) + (1140 + 1139.9) * (358.5 - 426.9) + (1139.9 + 1139.3) * (426.9 - 432.9) + (1139.3 + 1082.2) * (432.9 - 489.4) + (1082.2 + 1078) * (489.4 - 485.2) + (1078 + 951.4) * (485.2 - 485.1) + (951.4 + 951.4) * (485.1 - 362.7) + (951.4 + 947.1) * (362.7 - 358.5) + (947.1 + 1000.2) * (358.5 - 305.4) + (1000.2 + 1093.2) * (305.4 - 305.4)) * 0.5 * 0.00694$
PORCH (Non-living area)	89	$-((609.3 + 609.3) * (1042.5 - 1120.1) + (609.3 + 615.3) * (1120.1 - 1120.2) + (615.3 + 615.4) * (1120.2 - 1153.2) + (615.4 + 495.3) * (1153.2 - 1153.2) + (495.3 + 495.3) * (1153.2 - 1042.5) + (495.3 + 609.3) * (1042.5 - 1042.5)) * 0.5 * 0.00694$
PATIO (Non-living area)	1317	$-((951.3 + 951.2) * (78.8 - 136) + (951.2 + 1092.8) * (136 - 136) + (1092.8 + 1092.8) * (136 - 305.4) + (1092.8 + 1000.2) * (305.4 - 305.4) + (1000.2 + 967.3) * (305.4 - 338.3) + (967.3 + 943.2) * (338.3 - 362.1) + (943.2 + 871.3) * (362.1 - 362.1) + (871.3 + 871.3) * (362.1 - 338.5) + (871.3 + 774.7) * (338.5 - 338.3) + (774.7 + 774.7) * (338.3 - 362.1) + (774.7 + 696.3) * (362.1 - 362.1) + (696.3 + 696.3) * (362.1 - 458.3) + (696.3 + 402.1) * (458.3 - 458.3) + (402.1 + 402.1) * (458.3 - 362.1) + (402.1 + 398.1) * (362.1 - 362.1) + (398.1 + 398.1) * (362.1 - 188.1) + (398.1 + 452.9) * (188.1 - 188.1) + (452.9 + 452.9) * (188.1 - 134.4) + (452.9 + 671.3) * (134.4 - 134.6) + (671.3 + 671.3) * (134.6 - 78.8) + (671.3 + 951.3) * (78.8 - 78.8)) * 0.5 * 0.00694$
FIREPLACE (Non-living area)	16	$-((774.7 + 871.3) * (338.3 - 338.5) + (871.3 + 871.3) * (338.5 - 362.1) + (871.3 + 774.7) * (362.1 - 362.1) + (774.7 + 774.7) * (362.1 - 338.3)) * 0.5 * 0.00694$
FIREPLACE (Non-living area)	15	$-((1140.2 + 1166.6) * (352.5 - 353.3) + (1166.6 + 1166.6) * (353.3 - 432.8) + (1166.6 + 1139.9) * (432.8 - 432.9) + (1139.9 + 1139.9) * (432.9 - 426.9) + (1139.9 + 1140) * (426.9 - 358.5) + (1140 + 1140.2) * (358.5 - 352.5)) * 0.5 * 0.00694$

1412 Hedgelawn Way, North Raleigh, Raleigh, Wake County, North Carolina, United States, 27615

Gross Living Area: 12801 sq. ft



Space

Area (sq. ft)

Calculation Coordinate Polygon Area Algorithm using inches

FLOOR 3
(Living area)

4313

$$\begin{aligned}
 & -((296.4 + 296.4) * (78.3 - 102.1) + (296.4 + 362.1) * (102.1 - 102.1) + (362.1 + 362.1) * (102.1 - \\
 & 198.3) + (362.1 + 360.2) * (198.3 - 204.3) + (360.2 + 360.2) * (204.3 - 458) + (360.2 + 363.1) * \\
 & (458 - 476.9) + (363.1 + 368.5) * (476.9 - 492.4) + (368.5 + 379.1) * (492.4 - 509.2) + (379.1 + \\
 & 394.6) * (509.2 - 523.6) + (394.6 + 413.5) * (523.6 - 534.1) + (413.5 + 440.2) * (534.1 - 540.3) + \\
 & (440.2 + 541.8) * (540.3 - 539.9) + (541.8 + 541.6) * (539.9 - 492.3) + (541.6 + 590.4) * (492.3 - \\
 & 492.3) + (590.4 + 597.6) * (492.3 - 490.9) + (597.6 + 605) * (490.9 - 488.4) + (605 + 612) * \\
 & (488.4 - 484.1) + (612 + 618.3) * (484.1 - 478.4) + (618.3 + 623.6) * (478.4 - 468.5) + (623.6 +
 \end{aligned}$$

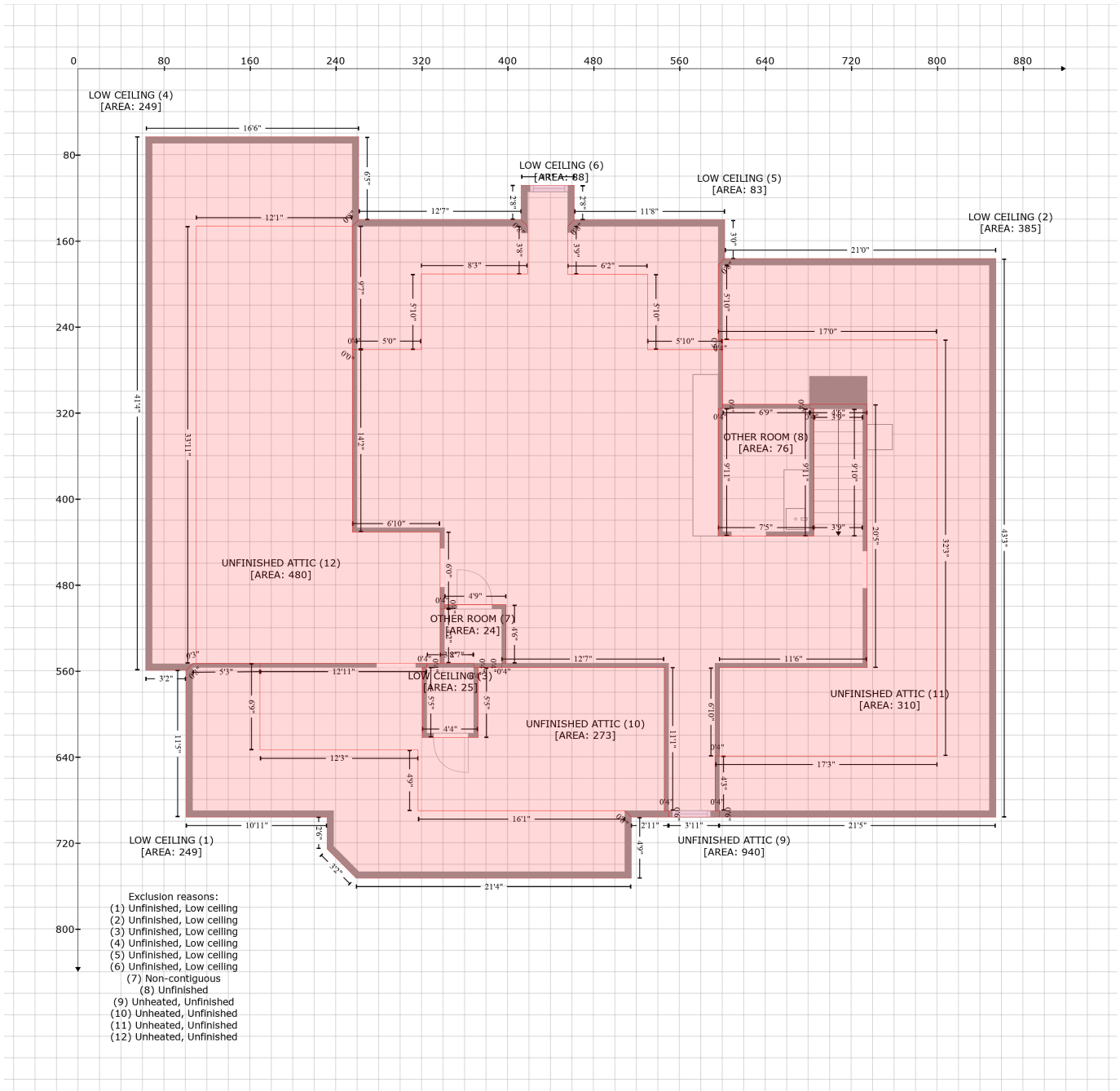
1412 Hedgelawn Way, North Raleigh, Raleigh, Wake County, North Carolina, United States, 27615

Gross Living Area: 12801 sq. ft

Space	Area (sq. ft)	Calculation <small>Coordinate Polygon Area Algorithm using inches</small>
		$ \begin{aligned} &625.6 * (468.5 - 459.3) + (625.6 + 625.6) * (459.3 - 315.1) + (625.6 + 627) * (315.1 - 303.3) + \\ &(627 + 630.7) * (303.3 - 294.1) + (630.7 + 637.2) * (294.1 - 285.7) + (637.2 + 646.7) * (285.7 - \\ &279.1) + (646.7 + 656.3) * (279.1 - 275.9) + (656.3 + 662.3) * (275.9 - 275.3) + (662.3 + 914.6) * \\ &(275.3 - 275.3) + (914.6 + 914.6) * (275.3 - 375.1) + (914.6 + 970.5) * (375.1 - 432) + (970.5 + \\ &970.5) * (432 - 607.6) + (970.5 + 1029) * (607.6 - 607.6) + (1029 + 1029) * (607.6 - 797.1) + \\ &(1029 + 1023) * (797.1 - 797.1) + (1023 + 1023) * (797.1 - 801.1) + (1023 + 989.2) * (801.1 - \\ &801.1) + (989.2 + 989.2) * (801.1 - 890.5) + (989.2 + 1018.8) * (890.5 - 879.8) + (1018.8 + \\ &1039.5) * (879.8 - 873) + (1039.5 + 1122.7) * (873 - 1115.6) + (1122.7 + 1122.8) * (1115.6 - \\ &1115.7) + (1122.8 + 1123.5) * (1115.7 - 1117.6) + (1123.5 + 1123.9) * (1117.6 - 1119.3) + \\ &(1123.9 + 1171.8) * (1119.3 - 1259) + (1171.8 + 1166.1) * (1259 - 1260.9) + (1166.1 + 1159) * \\ &(1260.9 - 1239.7) + (1159 + 1166.1) * (1239.7 - 1260.9) + (1166.1 + 1057.8) * (1260.9 - 1298.1) \\ &+ (1057.8 + 1071.9) * (1298.1 - 1339.6) + (1071.9 + 1073.9) * (1339.6 - 1345.3) + (1073.9 + \\ &1033.8) * (1345.3 - 1359.1) + (1033.8 + 1031.8) * (1359.1 - 1353.5) + (1031.8 + 1017.7) * \\ &(1353.5 - 1312.2) + (1017.7 + 935.4) * (1312.2 - 1340.5) + (935.4 + 901.7) * (1340.5 - 1242.3) + \\ &(901.7 + 860.2) * (1242.3 - 1256.6) + (860.2 + 854.6) * (1256.6 - 1258.5) + (854.6 + 840.3) * \\ &(1258.5 - 1217.2) + (840.3 + 840.3) * (1217.2 - 1217.1) + (840.3 + 846) * (1217.1 - 1215.3) + \\ &(846 + 1075.5) * (1215.3 - 1136.1) + (1075.5 + 1087.7) * (1136.1 - 1131.8) + (1087.7 + 1075.5) * \\ &(1131.8 - 1136.1) + (1075.5 + 840.3) * (1136.1 - 1217.1) + (840.3 + 838.9) * (1217.1 - 1213.3) + \\ &(838.9 + 811.1) * (1213.3 - 1132.2) + (811.1 + 816.7) * (1132.2 - 1130.3) + (816.7 + 810.9) * \\ &(1130.3 - 1132.2) + (810.9 + 810.6) * (1132.2 - 1130.6) + (810.6 + 809.8) * (1130.6 - 1128.6) + \\ &(809.8 + 794.4) * (1128.6 - 1083.8) + (794.4 + 819.4) * (1083.8 - 1075.2) + (819.4 + 780.4) * \\ &(1075.2 - 962.2) + (780.4 + 866.3) * (962.2 - 932.6) + (866.3 + 860) * (932.6 - 914.5) + (860 + \\ &860) * (914.5 - 803.1) + (860 + 764.1) * (803.1 - 803.1) + (764.1 + 764.1) * (803.1 - 836.2) + \\ &(764.1 + 575.3) * (836.2 - 836.2) + (575.3 + 575.3) * (836.2 - 853) + (575.3 + 455.3) * (853 - 853) \\ &+ (455.3 + 455.3) * (853 - 865.8) + (455.3 + 428.2) * (865.8 - 893) + (428.2 + 319.2) * (893 - 893) \\ &+ (319.2 + 292.1) * (893 - 865.8) + (292.1 + 292.1) * (865.8 - 836.2) + (292.1 + 98.8) * (836.2 - \\ &836.2) + (98.8 + 98.8) * (836.2 - 824.4) + (98.8 + 68.6) * (824.4 - 824.4) + (68.6 + 68.6) * (824.4 - \\ &602.2) + (68.6 + 92.1) * (602.2 - 602.2) + (92.1 + 92.1) * (602.2 - 483.4) + (92.1 + 98.1) * (483.4 - \\ &483.4) + (98.1 + 98.1) * (483.4 - 462.6) + (98.1 + 92.1) * (462.6 - 462.6) + (92.1 + 92.1) * (462.6 - \\ &102.1) + (92.1 + 155.9) * (102.1 - 102.1) + (155.9 + 155.9) * (102.1 - 78.3) + (155.9 + 296.4) * \\ &(78.3 - 78.3) * 0.5 * 0.00694 \end{aligned} $
OPEN TO BELOW (Non-living area)	611	$ \begin{aligned} &-((662.3 + 662.3) * (198.3 - 275.3) + (662.3 + 656.3) * (275.3 - 275.9) + (656.3 + 646.7) * (275.9 - \\ &279.1) + (646.7 + 637.2) * (279.1 - 285.7) + (637.2 + 630.7) * (285.7 - 294.1) + (630.7 + 627) * \\ &(294.1 - 303.3) + (627 + 625.6) * (303.3 - 315.1) + (625.6 + 625.6) * (315.1 - 459.3) + (625.6 + \\ &623.6) * (459.3 - 468.5) + (623.6 + 618.3) * (468.5 - 478.4) + (618.3 + 612) * (478.4 - 484.1) + \\ &(612 + 605) * (484.1 - 488.4) + (605 + 597.6) * (488.4 - 490.9) + (597.6 + 590.4) * (490.9 - 492.3) \\ &+ (590.4 + 541.6) * (492.3 - 492.3) + (541.6 + 541.8) * (492.3 - 539.9) + (541.8 + 440.2) * (539.9 - \\ &540.3) + (440.2 + 413.5) * (540.3 - 534.1) + (413.5 + 394.6) * (534.1 - 523.6) + (394.6 + 379.1) * \\ &(523.6 - 509.2) + (379.1 + 368.5) * (509.2 - 492.4) + (368.5 + 363.1) * (492.4 - 476.9) + (363.1 + \\ &360.2) * (476.9 - 458) + (360.2 + 360.2) * (458 - 204.3) + (360.2 + 362.1) * (204.3 - 198.3) + \\ &(362.1 + 662.3) * (198.3 - 198.3)) * 0.5 * 0.00694 \end{aligned} $
LOW CEILING (Non-living area)	83	$ \begin{aligned} &-((901.7 + 935.4) * (1242.3 - 1340.5) + (935.4 + 1017.7) * (1340.5 - 1312.2) + (1017.7 + 1031.8) * \\ &(1312.2 - 1353.4) + (1031.8 + 1033.8) * (1353.4 - 1359.1) + (1033.8 + 904.5) * (1359.1 - \\ &1403.6) + (904.5 + 854.6) * (1403.6 - 1258.5) + (854.6 + 860.2) * (1258.5 - 1256.6) + (860.2 + \\ &901.7) * (1256.6 - 1242.3)) * 0.5 * 0.00694 \end{aligned} $
LOW CEILING (Non-living area)	42	$ \begin{aligned} &-((1171.8 + 1187.9) * (1259 - 1306) + (1187.9 + 1073.9) * (1306 - 1345.3) + (1073.9 + 1071.9) * \\ &(1345.3 - 1339.6) + (1071.9 + 1057.8) * (1339.6 - 1298.1) + (1057.8 + 1171.8) * (1298.1 - 1259)) \\ &* 0.5 * 0.00694 \end{aligned} $
LOW CEILING (Non-living area)	23	$ \begin{aligned} &-((1029 + 1029) * (797.1 - 876.6) + (1029 + 1023) * (876.6 - 878.6) + (1023 + 989.2) * (878.6 - \\ &890.5) + (989.2 + 989.2) * (890.5 - 801.1) + (989.2 + 1023) * (801.1 - 801.1) + (1023 + 1023) * \\ &(801.1 - 797.1) + (1023 + 1029) * (797.1 - 797.1)) * 0.5 * 0.00694 \end{aligned} $

1412 Hedgelawn Way, North Raleigh, Raleigh, Wake County, North Carolina, United States, 27615

Gross Living Area: 12801 sq. ft



Space	Area (sq. ft)	Calculation
LOW CEILING (Non-living area)	249	Coordinate Polygon Area Algorithm using inches $-((169.5 + 169.5) * (553 - 633.6) + (169.5 + 316.7) * (633.6 - 633.6) + (316.7 + 316.7) * (633.6 - 690.2) + (316.7 + 509.3) * (690.2 - 690.2) + (509.3 + 515.3) * (690.2 - 696.2) + (515.3 + 515.3) * (696.2 - 753) + (515.3 + 259.2) * (753 - 753) + (259.2 + 232.1) * (753 - 725.8) + (232.1 + 232.1) * (725.8 - 696.2) + (232.1 + 100.7) * (696.2 - 696.2) + (100.7 + 100.7) * (696.2 - 559.6) + (100.7 + 106.7) * (559.6 - 553.6) + (106.7 + 169.5) * (553.6 - 553)) * 0.5 * 0.00694$
LOW CEILING	385	Coordinate Polygon Area Algorithm using inches $-((854.8 + 854.8) * (176.7 - 696.2) + (854.8 + 597.3) * (696.2 - 696.2) + (597.3 + 597.3) * (696.2 -$

1412 Hedgelawn Way, North Raleigh, Raleigh, Wake County, North Carolina, United States, 27615

Gross Living Area: 12801 sq. ft

Space	Area (sq. ft)	Calculation <small>Coordinate Polygon Area Algorithm using inches</small>
(Non-living area)		$690.2 + (597.3 + 593.3) * (690.2 - 690.2) + (593.3 + 593.3) * (690.2 - 639.4) + (593.3 + 800.1) * (639.4 - 639.4) + (800.1 + 800.1) * (639.4 - 252.3) + (800.1 + 596.3) * (252.3 - 252.3) + (596.3 + 596.3) * (252.3 - 182.7) + (596.3 + 602.3) * (182.7 - 176.7) + (602.3 + 854.8) * (176.7 - 176.7) * 0.5 * 0.00694$
LOW CEILING (Non-living area)	25	$-((368.6 + 368.6) * (553 - 557) + (368.6 + 372.6) * (557 - 557) + (372.6 + 372.6) * (557 - 622.1) + (372.6 + 320.7) * (622.1 - 622.1) + (320.7 + 320.7) * (622.1 - 557) + (320.7 + 324.7) * (557 - 557) + (324.7 + 324.7) * (557 - 553) + (324.7 + 368.6) * (553 - 553)) * 0.5 * 0.00694$
LOW CEILING (Non-living area)	249	$-((261.4 + 261.4) * (63.4 - 140.6) + (261.4 + 255.4) * (140.6 - 146.5) + (255.4 + 110.1) * (146.5 - 146.5) + (110.1 + 110.1) * (146.5 - 553) + (110.1 + 106.7) * (553 - 553.6) + (106.7 + 100.7) * (553.6 - 559.6) + (100.7 + 63.1) * (559.6 - 559.6) + (63.1 + 63.1) * (559.6 - 63.4) + (63.1 + 261.4) * (63.4 - 63.4)) * 0.5 * 0.00694$
LOW CEILING (Non-living area)	83	$-((602.3 + 602.3) * (140.7 - 176.7) + (602.3 + 596.3) * (176.7 - 182.7) + (596.3 + 596.3) * (182.7 - 252.3) + (596.3 + 600.3) * (252.3 - 252.3) + (600.3 + 600.3) * (252.3 - 261.4) + (600.3 + 530.4) * (261.4 - 261.4) + (530.4 + 530.4) * (261.4 - 191.4) + (530.4 + 456.1) * (191.4 - 191.4) + (456.1 + 456.1) * (191.4 - 146.7) + (456.1 + 462.1) * (146.7 - 140.7) + (462.1 + 602.3) * (140.7 - 140.7)) * 0.5 * 0.00694$
LOW CEILING (Non-living area)	88	$-((412.7 + 418.7) * (140.6 - 146.6) + (418.7 + 418.7) * (146.6 - 191) + (418.7 + 319.7) * (191 - 191) + (319.7 + 319.7) * (191 - 261.3) + (319.7 + 259.5) * (261.3 - 261.3) + (259.5 + 255.5) * (261.3 - 261.3) + (255.5 + 255.4) * (261.3 - 146.5) + (255.4 + 261.4) * (146.5 - 140.6) + (261.4 + 412.7) * (140.6 - 140.6)) * 0.5 * 0.00694$
OTHER ROOM (Non-living area)	24	$-((398.7 + 398.7) * (498.6 - 553) + (398.7 + 394.7) * (553 - 553) + (394.7 + 394.7) * (553 - 557) + (394.7 + 368.6) * (557 - 557) + (368.6 + 368.6) * (557 - 553) + (368.6 + 337.2) * (553 - 553) + (337.2 + 337.2) * (553 - 502.6) + (337.2 + 341.2) * (502.6 - 502.6) + (341.2 + 341.2) * (502.6 - 498.6) + (341.2 + 398.7) * (498.6 - 498.6)) * 0.5 * 0.00694$
OTHER ROOM (Non-living area)	76	$-((681.3 + 681.3) * (312.2 - 316.2) + (681.3 + 685.3) * (316.2 - 316.2) + (685.3 + 685.3) * (316.2 - 434.7) + (685.3 + 596.3) * (434.7 - 434.7) + (596.3 + 596.3) * (434.7 - 316.2) + (596.3 + 600.3) * (316.2 - 316.2) + (600.3 + 600.3) * (316.2 - 312.2) + (600.3 + 681.3) * (312.2 - 312.2)) * 0.5 * 0.00694$
UNFINISHED ATTIC (Non-living area)	940	$-((462.1 + 462.1) * (108.5 - 140.7) + (462.1 + 456.1) * (140.7 - 146.7) + (456.1 + 456.1) * (146.7 - 191.4) + (456.1 + 530.4) * (191.4 - 191.4) + (530.4 + 530.4) * (191.4 - 261.4) + (530.4 + 600.3) * (261.4 - 261.4) + (600.3 + 600.3) * (261.4 - 316.2) + (600.3 + 596.3) * (316.2 - 316.2) + (596.3 + 596.3) * (316.2 - 434.7) + (596.3 + 685.3) * (434.7 - 434.7) + (685.3 + 685.3) * (434.7 - 316.2) + (685.3 + 681.3) * (316.2 - 316.2) + (681.3 + 681.3) * (316.2 - 312.2) + (681.3 + 734.9) * (312.2 - 312.2) + (734.9 + 734.9) * (312.2 - 557) + (734.9 + 597.3) * (557 - 557) + (597.3 + 597.3) * (557 - 639.4) + (597.3 + 593.3) * (639.4 - 639.4) + (593.3 + 593.3) * (639.4 - 690.2) + (593.3 + 597.3) * (690.2 - 690.2) + (597.3 + 597.3) * (690.2 - 696.2) + (597.3 + 550) * (696.2 - 696.2) + (550 + 550) * (696.2 - 690.2) + (550 + 546) * (690.2 - 690.2) + (546 + 546) * (690.2 - 557) + (546 + 394.7) * (557 - 557) + (394.7 + 394.7) * (557 - 553) + (394.7 + 398.7) * (553 - 553) + (398.7 + 398.7) * (553 - 498.6) + (398.7 + 341.2) * (498.6 - 498.6) + (341.2 + 341.2) * (498.6 - 502.6) + (341.2 + 337.2) * (502.6 - 502.6) + (337.2 + 337.2) * (502.6 - 431.1) + (337.2 + 255.6) * (431.1 - 431.1) + (255.6 + 255.5) * (431.1 - 261.3) + (255.5 + 259.5) * (261.3 - 261.3) + (259.5 + 319.7) * (261.3 - 261.3) + (319.7 + 319.7) * (261.3 - 191) + (319.7 + 418.7) * (191 - 191) + (418.7 + 418.7) * (191 - 146.6) + (418.7 + 412.7) * (146.6 - 140.6) + (412.7 + 412.7) * (140.6 - 108.5) + (412.7 + 462.1) * (108.5 - 108.5)) * 0.5 * 0.00694$
UNFINISHED ATTIC (Non-living area)	273	$-((324.7 + 324.7) * (553 - 557) + (324.7 + 320.7) * (557 - 557) + (320.7 + 320.7) * (557 - 622.1) + (320.7 + 372.6) * (622.1 - 622.1) + (372.6 + 372.6) * (622.1 - 557) + (372.6 + 546) * (557 - 557) + (546 + 546) * (557 - 690.2) + (546 + 550) * (690.2 - 690.2) + (550 + 550) * (690.2 - 696.2) + (550 + 515.3) * (696.2 - 696.2) + (515.3 + 509.3) * (696.2 - 690.2) + (509.3 + 316.7) * (690.2 - 690.2) + (316.7 + 316.7) * (690.2 - 633.6) + (316.7 + 169.5) * (633.6 - 633.6) + (169.5 + 169.5) * (633.6 - 553) + (169.5 + 324.7) * (553 - 553)) * 0.5 * 0.00694$
UNFINISHED ATTIC (Non-living area)	310	$-((800.1 + 800.1) * (252.3 - 639.4) + (800.1 + 597.3) * (639.4 - 639.4) + (597.3 + 597.3) * (639.4 - 557) + (597.3 + 734.9) * (557 - 557) + (734.9 + 734.9) * (557 - 312.2) + (734.9 + 600.3) * (312.2 - 312.2) + (600.3 + 600.3) * (312.2 - 252.3) + (600.3 + 800.1) * (252.3 - 252.3)) * 0.5 * 0.00694$
UNFINISHED ATTIC (Non-living area)	480	$-((110.1 + 255.4) * (146.5 - 146.5) + (255.4 + 255.5) * (146.5 - 261.3) + (255.5 + 255.6) * (261.3 - 261.4) + (255.6 + 255.6) * (261.4 - 431.1) + (255.6 + 337.2) * (431.1 - 431.1) + (337.2 + 337.2) * (431.1 - 553) + (337.2 + 110.1) * (553 - 553) + (110.1 + 110.1) * (553 - 146.5)) * 0.5 * 0.00694$