


# 2853 Gleneagles Road, Salem, Virginia, United States



## Property summary


 **1** Garages

 **4** Bedrooms

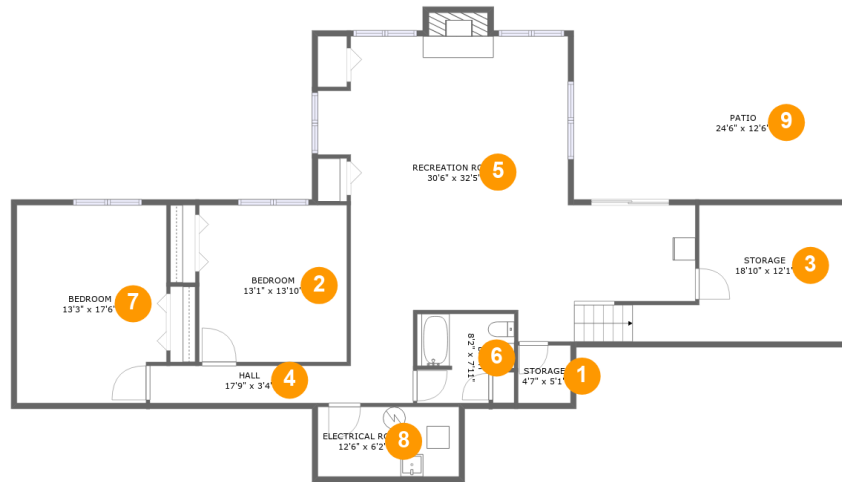
 **3** Bathrooms

 **1** Half baths

 **2** Floors

 **3,786**  
Gross living  
area sqft

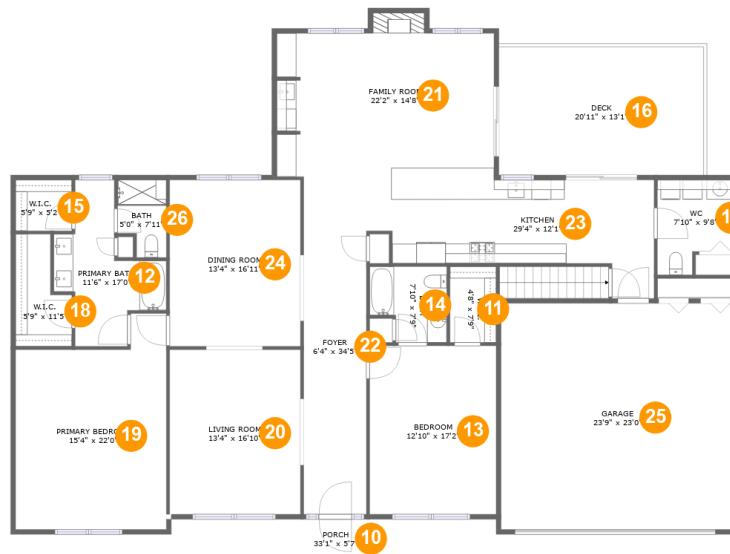
 **5,490**  
Total sqft

**2853 Gleneagles Road, Salem, Virginia, United States****Room dimensions**

Floor 1

Total sqft: 2000 Living area: 1362

#		Dimensions	sqft	Counted as living area
1	Storage	4'7" x 5'1"	24 sq. ft	No
2	Bedroom	13'1" x 13'10"	182 sq. ft	Yes
3	Storage	18'10" x 12'1"	175 sq. ft	No
4	Hall	17'9" x 3'4"	59 sq. ft	Yes
5	Recreation Room	30'6" x 32'5"	668 sq. ft	Yes
6	Bath	8'2" x 7'11"	60 sq. ft	Yes
7	Bedroom	13'3" x 17'6"	226 sq. ft	Yes
8	Electrical Room	12'6" x 6'2"	77 sq. ft	No
9	Patio	24'6" x 12'6"	308 sq. ft	No

**2853 Gleneagles Road, Salem, Virginia, United States****Room dimensions**

Floor 2

Total sqft: 3490

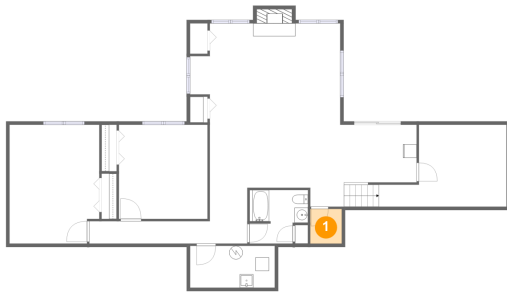
Living area: 2424

#		Dimensions	sqft	Counted as living area
10	Porch	33'1" x 5'7"	185 sq. ft	No
11	W.I.C.	4'8" x 7'9"	36 sq. ft	Yes
12	Primary Bath	11'6" x 17'0"	112 sq. ft	Yes
13	Bedroom	12'10" x 17'2"	222 sq. ft	Yes
14	Bath	7'10" x 7'9"	53 sq. ft	Yes
15	W.I.C.	5'9" x 5'2"	30 sq. ft	Yes
16	Deck	20'11" x 13'1"	273 sq. ft	No
17	WC	7'10" x 9'8"	66 sq. ft	Yes
18	W.I.C.	5'9" x 11'5"	52 sq. ft	Yes
19	Primary Bedroom	15'4" x 22'0"	296 sq. ft	Yes
20	Living Room	13'4" x 16'10"	224 sq. ft	Yes

**2853 Gleneagles Road, Salem, Virginia, United States**

#		Dimensions	sqft	Counted as living area
21	Family Room	22'2" x 14'8"	324 sq. ft	Yes
22	Foyer	6'4" x 34'5"	220 sq. ft	Yes
23	Kitchen	29'4" x 12'1"	270 sq. ft	Yes
24	Dining Room	13'4" x 16'11"	226 sq. ft	Yes
25	Garage	23'9" x 23'0"	549 sq. ft	No
26	Bath	5'0" x 7'11"	35 sq. ft	Yes

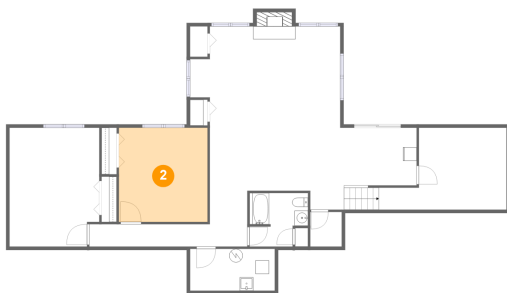
## 1 Floor 1 - Storage



Dimensions: 4'7" x 5'1"  
Area: 24 sq. ft  
Counted as living area: No

Heated: No  
Finished: No  
Enclosed: No  
Contiguous: Yes  
Permitted: Yes  
Wet space: No  
Addition: No  
Conversion: No

## 2 Floor 1 - Bedroom



Dimensions: 13'1" x 13'10"  
Area: 182 sq. ft  
Counted as living area: Yes

Heated: Yes  
Finished: Yes  
Enclosed: Yes  
Contiguous: Yes  
Permitted: Yes  
Wet space: No  
Addition: No  
Conversion: No

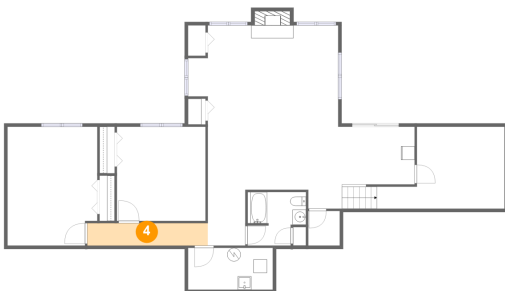
### 3 Floor 1 - Storage



Dimensions: 18'10" x 12'1"  
Area: 175 sq. ft  
Counted as living area: No

Heated: No  
Finished: Yes  
Enclosed: No  
Contiguous: Yes  
Permitted: Yes  
Wet space: No  
Addition: No  
Conversion: No

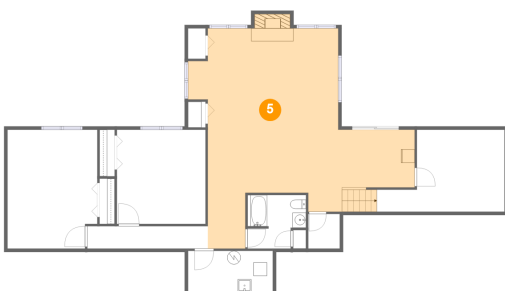
### 4 Floor 1 - Hall



Dimensions: 17'9" x 3'4"  
Area: 59 sq. ft  
Counted as living area: Yes

Heated: Yes  
Finished: Yes  
Enclosed: Yes  
Contiguous: Yes  
Permitted: Yes  
Wet space: No  
Addition: No  
Conversion: No

### 5 Floor 1 - Recreation Room

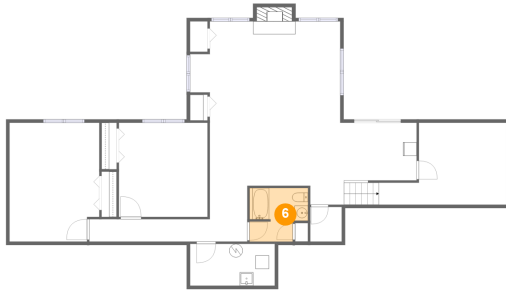


Dimensions: 30'6" x 32'5"  
Area: 668 sq. ft  
Counted as living area: Yes

Heated: Yes  
Finished: Yes  
Enclosed: Yes  
Contiguous: Yes  
Permitted: Yes  
Wet space: No  
Addition: No  
Conversion: No

# 2853 Gleneagles Road, Salem, Virginia, United States

## 6 Floor 1 - Bath



Dimensions: 8'2" x 7'11"  
Area: 60 sq. ft  
Counted as living area: Yes

Heated: Yes  
Finished: Yes  
Enclosed: Yes  
Contiguous: Yes  
Permitted: Yes  
Wet space: Yes  
Addition: No  
Conversion: No

## 7 Floor 1 - Bedroom



Dimensions: 13'3" x 17'6"  
Area: 226 sq. ft  
Counted as living area: Yes

Heated: Yes  
Finished: Yes  
Enclosed: Yes  
Contiguous: Yes  
Permitted: Yes  
Wet space: No  
Addition: No  
Conversion: No

## 8 Floor 1 - Electrical Room

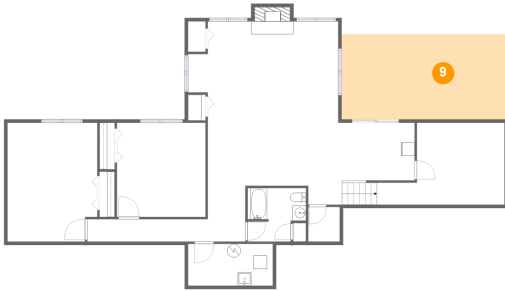


Dimensions: 12'6" x 6'2"  
Area: 77 sq. ft  
Counted as living area: No

Heated: No  
Finished: No  
Enclosed: Yes  
Contiguous: Yes  
Permitted: Yes  
Wet space: No  
Addition: No  
Conversion: No

# 2853 Gleneagles Road, Salem, Virginia, United States

## 9 Floor 1 - Patio



Dimensions: 24'6" x 12'6"  
Area: 308 sq. ft  
Counted as living area: No

Heated: No  
Finished: Yes  
Enclosed: No  
Contiguous: Yes  
Permitted: Yes  
Wet space: No  
Addition: No  
Conversion: No

## 10 Floor 2 - Porch



Dimensions: 33'1" x 5'7"  
Area: 185 sq. ft  
Counted as living area: No

Heated: No  
Finished: Yes  
Enclosed: No  
Contiguous: Yes  
Permitted: Yes  
Wet space: No  
Addition: No  
Conversion: No

## 11 Floor 2 - W.I.C.



Dimensions: 4'8" x 7'9"  
Area: 36 sq. ft  
Counted as living area: Yes

Heated: Yes  
Finished: Yes  
Enclosed: Yes  
Contiguous: Yes  
Permitted: Yes  
Wet space: No  
Addition: No  
Conversion: No



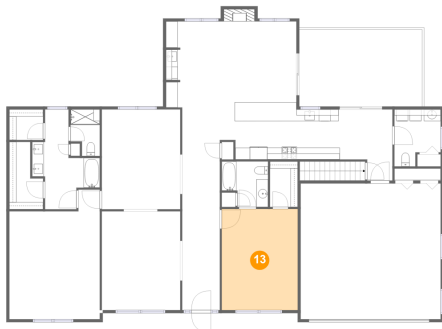
## 12 Floor 2 - Primary Bath



Dimensions: 11'6" x 17'0"  
Area: 112 sq. ft  
Counted as living area: Yes

Heated: Yes  
Finished: Yes  
Enclosed: Yes  
Contiguous: Yes  
Permitted: Yes  
Wet space: Yes  
Addition: No  
Conversion: No

## 13 Floor 2 - Bedroom



Dimensions: 12'10" x 17'2"  
Area: 222 sq. ft  
Counted as living area: Yes

Heated: Yes  
Finished: Yes  
Enclosed: Yes  
Contiguous: Yes  
Permitted: Yes  
Wet space: No  
Addition: No  
Conversion: No

## 14 Floor 2 - Bath



Dimensions: 7'10" x 7'9"  
Area: 53 sq. ft  
Counted as living area: Yes

Heated: Yes  
Finished: Yes  
Enclosed: Yes  
Contiguous: Yes  
Permitted: Yes  
Wet space: Yes  
Addition: No  
Conversion: No

**15** Floor 2 - W.I.C.



Dimensions: 5'9" x 5'2"  
Area: 30 sq. ft  
Counted as living area: Yes

Heated: Yes  
Finished: Yes  
Enclosed: Yes  
Contiguous: Yes  
Permitted: Yes  
Wet space: No  
Addition: No  
Conversion: No

**16** Floor 2 - Deck



Dimensions: 20'11" x 13'1"  
Area: 273 sq. ft  
Counted as living area: No

Heated: No  
Finished: Yes  
Enclosed: No  
Contiguous: No  
Permitted: Yes  
Wet space: No  
Addition: No  
Conversion: No

**17** Floor 2 - WC



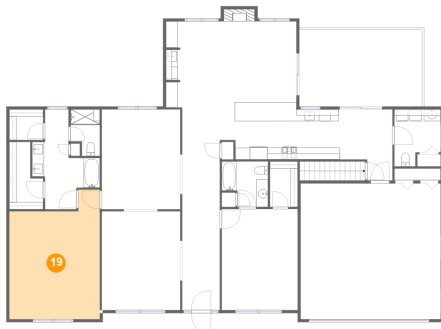
Dimensions: 7'10" x 9'8"  
Area: 66 sq. ft  
Counted as living area: Yes

Heated: Yes  
Finished: Yes  
Enclosed: Yes  
Contiguous: Yes  
Permitted: Yes  
Wet space: Yes  
Addition: No  
Conversion: No

**18 Floor 2 - W.I.C.**

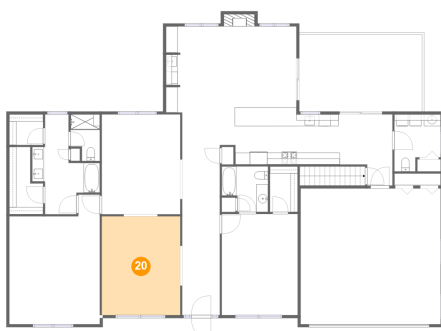
Dimensions: 5'9" x 11'5"  
Area: 52 sq. ft  
Counted as living area: Yes

Heated: Yes  
Finished: Yes  
Enclosed: Yes  
Contiguous: Yes  
Permitted: Yes  
Wet space: No  
Addition: No  
Conversion: No

**19 Floor 2 - Primary Bedroom**

Dimensions: 15'4" x 22'0"  
Area: 296 sq. ft  
Counted as living area: Yes

Heated: Yes  
Finished: Yes  
Enclosed: Yes  
Contiguous: Yes  
Permitted: Yes  
Wet space: No  
Addition: No  
Conversion: No

**20 Floor 2 - Living Room**

Dimensions: 13'4" x 16'10"  
Area: 224 sq. ft  
Counted as living area: Yes

Heated: Yes  
Finished: Yes  
Enclosed: Yes  
Contiguous: Yes  
Permitted: Yes  
Wet space: No  
Addition: No  
Conversion: No

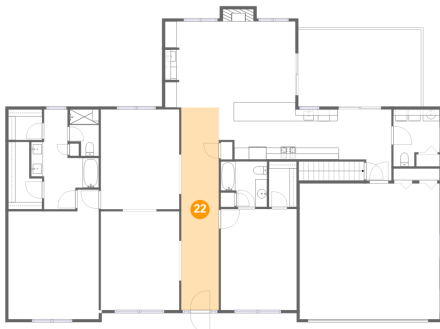
**21** Floor 2 - Family Room



Dimensions: 22'2" x 14'8"  
Area: 324 sq. ft  
Counted as living area: Yes

Heated: Yes  
Finished: Yes  
Enclosed: Yes  
Contiguous: Yes  
Permitted: Yes  
Wet space: No  
Addition: No  
Conversion: No

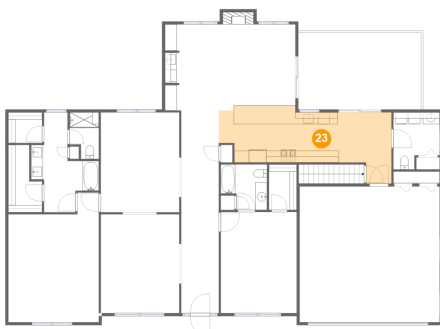
**22** Floor 2 - Foyer



Dimensions: 6'4" x 34'5"  
Area: 220 sq. ft  
Counted as living area: Yes

Heated: Yes  
Finished: Yes  
Enclosed: Yes  
Contiguous: Yes  
Permitted: Yes  
Wet space: No  
Addition: No  
Conversion: No

**23** Floor 2 - Kitchen



Dimensions: 29'4" x 12'1"  
Area: 270 sq. ft  
Counted as living area: Yes

Heated: Yes  
Finished: Yes  
Enclosed: Yes  
Contiguous: Yes  
Permitted: Yes  
Wet space: No  
Addition: No  
Conversion: No

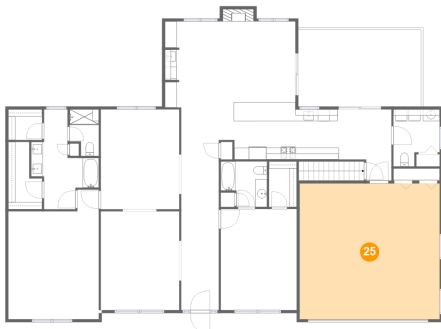
**24** Floor 2 - Dining Room



Dimensions: 13'4" x 16'11"  
Area: 226 sq. ft  
Counted as living area: Yes

Heated: Yes  
Finished: Yes  
Enclosed: Yes  
Contiguous: Yes  
Permitted: Yes  
Wet space: No  
Addition: No  
Conversion: No

**25** Floor 2 - Garage



Dimensions: 23'9" x 23'0"  
Area: 549 sq. ft  
Counted as living area: No

Heated: No  
Finished: No  
Enclosed: Yes  
Contiguous: Yes  
Permitted: Yes  
Wet space: No  
Addition: No  
Conversion: No

**26** Floor 2 - Bath



Dimensions: 5'0" x 7'11"  
Area: 35 sq. ft  
Counted as living area: Yes

Heated: Yes  
Finished: Yes  
Enclosed: Yes  
Contiguous: Yes  
Permitted: Yes  
Wet space: Yes  
Addition: No  
Conversion: No