



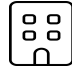



# 146 Cambridge Court, Westlake Corner, Hardy, Franklin County, Virginia, United States, 24101

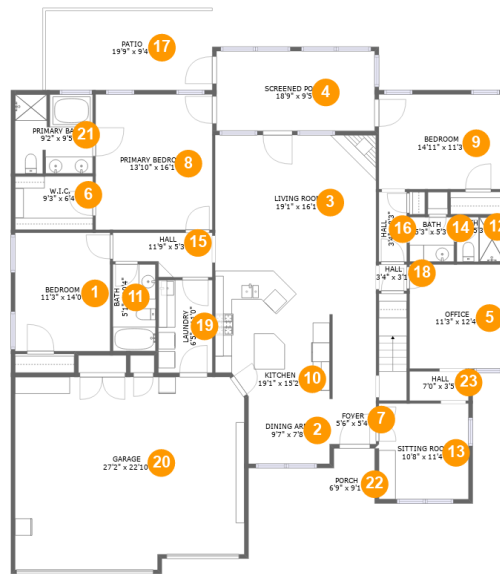


## Property Summary

 **1** garages     **3** bedrooms     **3** bathrooms     **0** half baths

 **2** floors     **2,484** Gross Living Area sqft     **3,801** total sqft

# 146 Cambridge Court, Westlake Corner, Hardy, Franklin County, Virginia, United States, 24101



## Room Dimensions

Floor 1

Total sqft: 3325

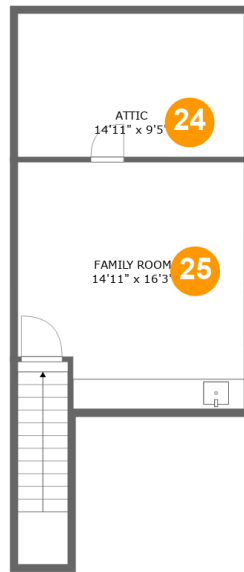
Living area: 2225

#	Room name	Dimensions	Area (sqft)	Counted as Living Area
1	Bedroom	11'3" x 14'0"	158 sq. ft	Yes
2	Dining Area	9'7" x 7'8"	74 sq. ft	Yes
3	Living Room	19'1" x 16'1"	307 sq. ft	Yes
4	Screened Porch	18'9" x 9'5"	177 sq. ft	No
5	Office	11'3" x 12'4"	139 sq. ft	Yes
6	W.i.c.	9'3" x 6'4"	58 sq. ft	Yes
7	Foyer	5'6" x 5'4"	30 sq. ft	Yes
8	Primary Bedroom	13'10" x 16'1"	222 sq. ft	Yes
9	Bedroom	14'11" x 11'3"	168 sq. ft	Yes
10	Kitchen	19'1" x 15'2"	280 sq. ft	Yes
11	Bath	5'1" x 10'4"	52 sq. ft	Yes

**146 Cambridge Court, Westlake Corner, Hardy,  
Franklin County, Virginia, United States, 24101**

#	Room name	Dimensions	Area (sqft)	Counted as Living Area
12	Bath	5'8" x 5'3"	30 sq. ft	Yes
13	Sitting Room	10'8" x 11'4"	121 sq. ft	Yes
14	Bath	5'3" x 5'3"	28 sq. ft	Yes
15	Hall	11'9" x 5'3"	52 sq. ft	Yes
16	Hall	3'4" x 8'3"	27 sq. ft	Yes
17	Patio	19'9" x 9'4"	196 sq. ft	No
18	Hall	3'4" x 3'1"	10 sq. ft	Yes
19	Laundry	6'5" x 11'0"	70 sq. ft	Yes
20	Garage	27'2" x 22'10"	600 sq. ft	No
21	Primary Bath	9'2" x 9'5"	84 sq. ft	Yes
22	Porch	6'9" x 9'1"	57 sq. ft	No
23	Hall	7'0" x 3'5"	24 sq. ft	Yes

**146 Cambridge Court, Westlake Corner, Hardy,  
Franklin County, Virginia, United States, 24101**



**Room Dimensions**

**Floor 2**

**Total sqft: 476**

**Living area: 259**

#	Room name	Dimensions	Area (sqft)	Counted as Living Area
24	Attic	14'11" x 9'5"	52 sq. ft	No
25	Family Room	14'11" x 16'3"	230 sq. ft	Yes

# 146 Cambridge Court, Westlake Corner, Hardy, Franklin County, Virginia, United States, 24101

## 1 Floor 1 - Bedroom



**Dimensions:** 11'3" x 14'0"  
**Area:** 158 sq. ft  
**Counted as Living Area:**  
Yes

**Heated:** Yes  
**Finished:** Yes  
**Enclosed:** Yes  
**Contiguous:**  
Yes  
**Permitted:** Yes  
**Wet Space:** No  
**Addition:** No  
**Conversion:** No

## 2 Floor 1 - Dining Area



**Dimensions:** 9'7" x 7'8"  
**Area:** 74 sq. ft  
**Counted as Living Area:**  
Yes

**Heated:** Yes  
**Finished:** Yes  
**Enclosed:** Yes  
**Contiguous:**  
Yes  
**Permitted:** Yes  
**Wet Space:** No  
**Addition:** No  
**Conversion:** No

# 146 Cambridge Court, Westlake Corner, Hardy, Franklin County, Virginia, United States, 24101

## 3 Floor 1 - Living Room



Dimensions: 19'1" x 16'1"  
Area: 307 sq. ft  
Counted as Living Area:  
Yes

Heated: Yes  
Finished: Yes  
Enclosed: Yes  
Contiguous:  
Yes  
Permitted: Yes  
Wet Space: No  
Addition: No  
Conversion: No

## 4 Floor 1 - Screened Porch



Dimensions: 18'9" x 9'5"  
Area: 177 sq. ft  
Counted as Living Area: No

Heated: No  
Finished: Yes  
Enclosed: No  
Contiguous: Yes  
Permitted: Yes  
Wet Space: No  
Addition: No  
Conversion: No

## 5 Floor 1 - Office



Dimensions: 11'3" x 12'4"  
Area: 139 sq. ft  
Counted as Living Area:  
Yes

Heated: Yes  
Finished: Yes  
Enclosed: Yes  
Contiguous:  
Yes  
Permitted: Yes  
Wet Space: No  
Addition: No  
Conversion: No

# 146 Cambridge Court, Westlake Corner, Hardy, Franklin County, Virginia, United States, 24101

## 6 Floor 1 - W.i.c.



Dimensions: 9'3" x 6'4"  
Area: 58 sq. ft  
Counted as Living Area:  
Yes

Heated: Yes  
Finished: Yes  
Enclosed: Yes  
Contiguous:  
Yes  
Permitted: Yes  
Wet Space: No  
Addition: No  
Conversion: No

## 7 Floor 1 - Foyer



Dimensions: 5'6" x 5'4"  
Area: 30 sq. ft  
Counted as Living Area:  
Yes

Heated: Yes  
Finished: Yes  
Enclosed: Yes  
Contiguous:  
Yes  
Permitted: Yes  
Wet Space: No  
Addition: No  
Conversion: No

## 8 Floor 1 - Primary Bedroom



Dimensions: 13'10" x 16'1"  
Area: 222 sq. ft  
Counted as Living Area:  
Yes

Heated: Yes  
Finished: Yes  
Enclosed: Yes  
Contiguous:  
Yes  
Permitted: Yes  
Wet Space: No  
Addition: No  
Conversion: No

# 146 Cambridge Court, Westlake Corner, Hardy, Franklin County, Virginia, United States, 24101

## 9 Floor 1 - Bedroom



Dimensions: 14'11" x 11'3"  
Area: 168 sq. ft  
Counted as Living Area:  
Yes

Heated: Yes  
Finished: Yes  
Enclosed: Yes  
Contiguous:  
Yes  
Permitted: Yes  
Wet Space: No  
Addition: No  
Conversion: No

## 10 Floor 1 - Kitchen



Dimensions: 19'1" x 15'2"  
Area: 280 sq. ft  
Counted as Living Area:  
Yes

Heated: Yes  
Finished: Yes  
Enclosed: Yes  
Contiguous:  
Yes  
Permitted: Yes  
Wet Space: No  
Addition: No  
Conversion: No

## 11 Floor 1 - Bath



Dimensions: 5'1" x 10'4"  
Area: 52 sq. ft  
Counted as Living Area:  
Yes

Heated: Yes  
Finished: Yes  
Enclosed: Yes  
Contiguous:  
Yes  
Permitted: Yes  
Wet Space: Yes  
Addition: No  
Conversion: No



# 146 Cambridge Court, Westlake Corner, Hardy, Franklin County, Virginia, United States, 24101

## 12 Floor 1 - Bath



Dimensions: 5'8" x 5'3"  
Area: 30 sq. ft  
Counted as Living Area:  
Yes

Heated: Yes  
Finished: Yes  
Enclosed: Yes  
Contiguous:  
Yes  
Permitted: Yes  
Wet Space: Yes  
Addition: No  
Conversion: No

## 13 Floor 1 - Sitting Room



Dimensions: 10'8" x 11'4"  
Area: 121 sq. ft  
Counted as Living Area:  
Yes

Heated: Yes  
Finished: Yes  
Enclosed: Yes  
Contiguous:  
Yes  
Permitted: Yes  
Wet Space: No  
Addition: No  
Conversion: No

## 14 Floor 1 - Bath



Dimensions: 5'3" x 5'3"  
Area: 28 sq. ft  
Counted as Living Area:  
Yes

Heated: Yes  
Finished: Yes  
Enclosed: Yes  
Contiguous:  
Yes  
Permitted: Yes  
Wet Space: Yes  
Addition: No  
Conversion: No

# 146 Cambridge Court, Westlake Corner, Hardy, Franklin County, Virginia, United States, 24101

## 15 Floor 1 - Hall



Dimensions: 11'9" x 5'3"  
Area: 52 sq. ft  
Counted as Living Area:  
Yes

Heated: Yes  
Finished: Yes  
Enclosed: Yes  
Contiguous:  
Yes  
Permitted: Yes  
Wet Space: No  
Addition: No  
Conversion: No

## 16 Floor 1 - Hall



Dimensions: 3'4" x 8'3"  
Area: 27 sq. ft  
Counted as Living Area:  
Yes

Heated: Yes  
Finished: Yes  
Enclosed: Yes  
Contiguous:  
Yes  
Permitted: Yes  
Wet Space: No  
Addition: No  
Conversion: No

## 17 Floor 1 - Patio



Dimensions: 19'9" x 9'4"  
Area: 196 sq. ft  
Counted as Living Area: No

Heated: No  
Finished: Yes  
Enclosed: No  
Contiguous: Yes  
Permitted: Yes  
Wet Space: No  
Addition: No  
Conversion: No

# 146 Cambridge Court, Westlake Corner, Hardy, Franklin County, Virginia, United States, 24101

## 18 Floor 1 - Hall



Dimensions: 3'4" x 3'1"  
Area: 10 sq. ft  
Counted as Living Area:  
Yes

Heated: Yes  
Finished: Yes  
Enclosed: Yes  
Contiguous:  
Yes  
Permitted: Yes  
Wet Space: No  
Addition: No  
Conversion: No

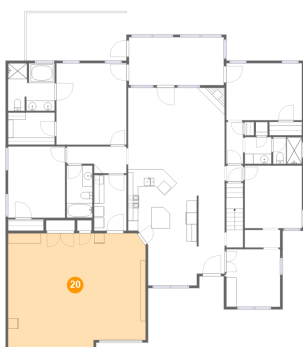
## 19 Floor 1 - Laundry



Dimensions: 6'5" x 11'0"  
Area: 70 sq. ft  
Counted as Living Area:  
Yes

Heated: Yes  
Finished: Yes  
Enclosed: Yes  
Contiguous:  
Yes  
Permitted: Yes  
Wet Space: No  
Addition: No  
Conversion: No

## 20 Floor 1 - Garage



Dimensions: 27'2" x 22'10"  
Area: 600 sq. ft  
Counted as Living Area: No

Heated: No  
Finished: No  
Enclosed: Yes  
Contiguous: Yes  
Permitted: Yes  
Wet Space: No  
Addition: No  
Conversion: No

# 146 Cambridge Court, Westlake Corner, Hardy, Franklin County, Virginia, United States, 24101

## 21 Floor 1 - Primary Bath



Dimensions: 9'2" x 9'5"  
Area: 84 sq. ft  
Counted as Living Area:  
Yes

Heated: Yes  
Finished: Yes  
Enclosed: Yes  
Contiguous:  
Yes  
Permitted: Yes  
Wet Space: Yes  
Addition: No  
Conversion: No

## 22 Floor 1 - Porch



Dimensions: 6'9" x 9'1"  
Area: 57 sq. ft  
Counted as Living Area: No

Heated: No  
Finished: Yes  
Enclosed: No  
Contiguous: Yes  
Permitted: Yes  
Wet Space: No  
Addition: No  
Conversion: No

## 23 Floor 1 - Hall

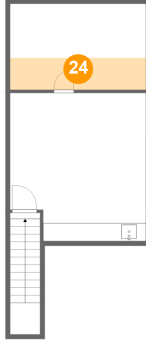


Dimensions: 7'0" x 3'5"  
Area: 24 sq. ft  
Counted as Living Area:  
Yes

Heated: Yes  
Finished: Yes  
Enclosed: Yes  
Contiguous:  
Yes  
Permitted: Yes  
Wet Space: No  
Addition: No  
Conversion: No

# 146 Cambridge Court, Westlake Corner, Hardy, Franklin County, Virginia, United States, 24101

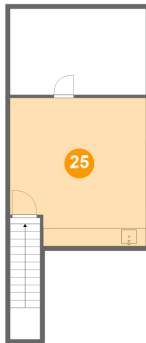
## 24 Floor 2 - Attic



Dimensions: 14'11" x 9'5"  
Area: 52 sq. ft  
Counted as Living Area: No

Heated: No  
Finished: No  
Enclosed: Yes  
Contiguous: Yes  
Permitted: Yes  
Wet Space: No  
Addition: No  
Conversion: No

## 25 Floor 2 - Family Room



Dimensions: 14'11" x 16'3"  
Area: 230 sq. ft  
Counted as Living Area:  
Yes

Heated: Yes  
Finished: Yes  
Enclosed: Yes  
Contiguous:  
Yes  
Permitted: Yes  
Wet Space: No  
Addition: No  
Conversion: No