


Home report


10636 Brewerton Lane, Linganore, New Market, Frederick County, Maryland, United States, 21774




Property summary




0  
Garages



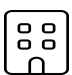
3  
Bedrooms




2  
Bathrooms




1  
Half baths



4  
Floors



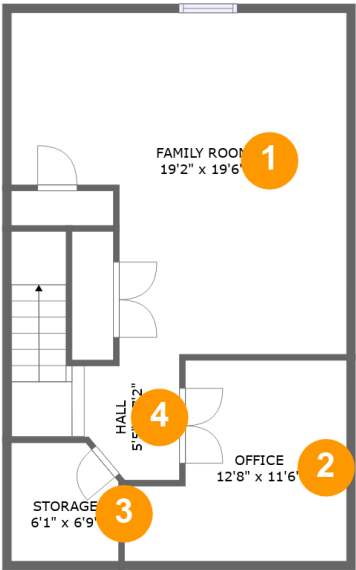
1,860  
Gross living  
area sqft



2,278  
Total sqft

Home report

10636 Brewerton Lane, Linganore, New Market, Frederick County, Maryland, United States, 21774



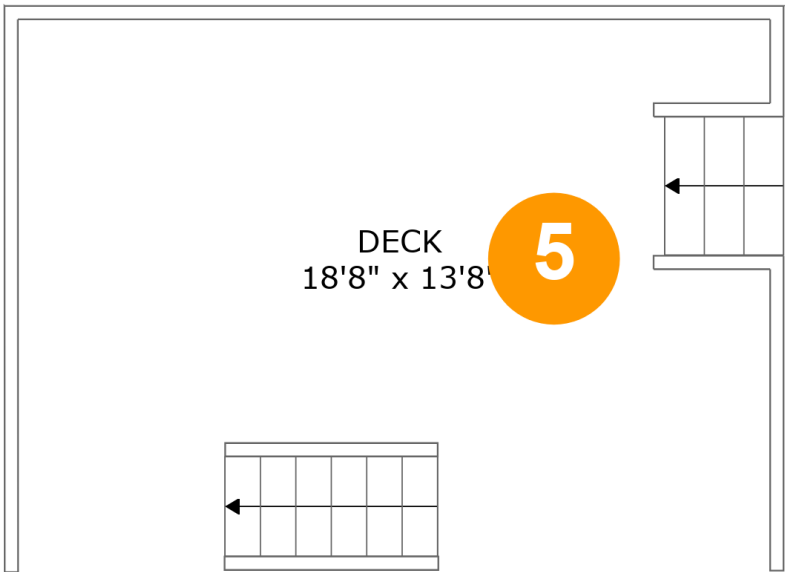
Room dimensions

Floor 1 Total sqft: 634    Living area: 590

#		Dimensions	sqft	Counted as living area
1	Family Room	19'2" x 19'6"	314 sq. ft	Yes
2	Office	12'8" x 11'6"	121 sq. ft	Yes
3	Storage	6'1" x 6'9"	39 sq. ft	No
4	Hall	5'5" x 7'2"	75 sq. ft	Yes

Home report

10636 Brewerton Lane, Linganore, New Market, Frederick  
County, Maryland, United States, 21774



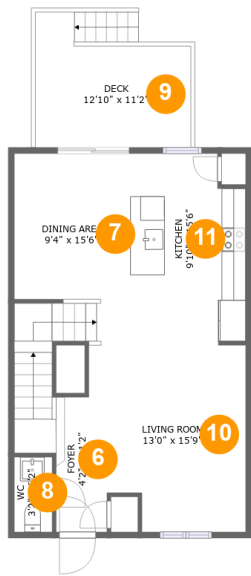
Room dimensions

Floor 2 Total sqft: 257    Living area: 0

#		Dimensions	sqft	Counted as living area
5	Deck	18'8" x 13'8"	257 sq. ft	No

Home report

10636 Brewerton Lane, Linganore, New Market, Frederick  
County, Maryland, United States, 21774



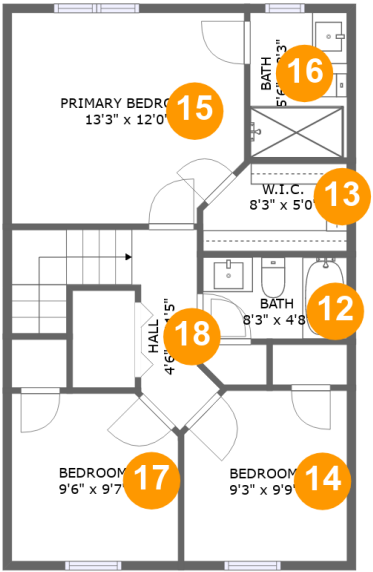
Room dimensions

Floor 3 Total sqft: 752 Living area: 635

#		Dimensions	sqft	Counted as living area
6	Foyer	4'2" x 11'2"	47 sq. ft	Yes
7	Dining Area	9'4" x 15'6"	174 sq. ft	Yes
8	WC	3'2" x 6'2"	19 sq. ft	Yes
9	Deck	12'10" x 11'2"	117 sq. ft	No
10	Living Room	13'0" x 15'9"	178 sq. ft	Yes
11	Kitchen	9'10" x 15'6"	145 sq. ft	Yes

Home report

10636 Brewerton Lane, Linganore, New Market, Frederick  
County, Maryland, United States, 21774

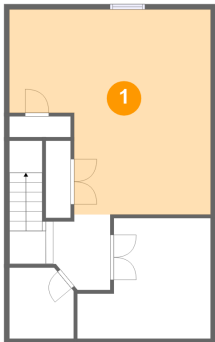


Room dimensions

Floor 4 Total sqft: 635    Living area: 635

#		Dimensions	sqft	Counted as living area
12	Bath	8'3" x 4'8"	38 sq. ft	Yes
13	W.I.C.	8'3" x 5'0"	38 sq. ft	Yes
14	Bedroom	9'3" x 9'9"	88 sq. ft	Yes
15	Primary Bedroom	13'3" x 12'0"	154 sq. ft	Yes
16	Bath	5'6" x 8'3"	46 sq. ft	Yes
17	Bedroom	9'6" x 9'7"	88 sq. ft	Yes
18	Hall	4'6" x 11'5"	68 sq. ft	Yes

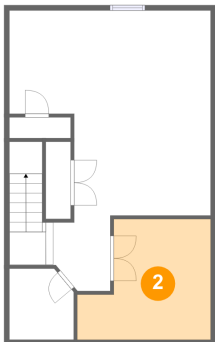
1 Floor 1 - Family Room



Dimensions: 19'2" x 19'6"  
Area: 314 sq. ft  
Counted as living area: Yes

Heated: Yes  
Finished: Yes  
Enclosed: Yes  
Contiguous: Yes  
Permitted: Yes  
Wet space: No  
Addition: No  
Conversion: No

2 Floor 1 - Office

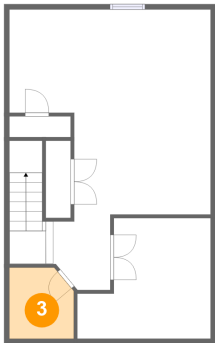


Dimensions: 12'8" x 11'6"  
Area: 121 sq. ft  
Counted as living area: Yes

Heated: Yes  
Finished: Yes  
Enclosed: Yes  
Contiguous: Yes  
Permitted: Yes  
Wet space: No  
Addition: No  
Conversion: No

10636 Brewerton Lane, Linganore, New Market, Frederick  
County, Maryland, United States, 21774

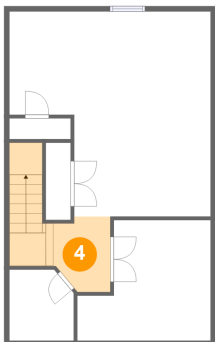
3 Floor 1 - Storage



Dimensions: 6'1" x 6'9"  
Area: 39 sq. ft  
Counted as living area: No

Heated: No  
Finished: No  
Enclosed: No  
Contiguous: Yes  
Permitted: Yes  
Wet space: No  
Addition: No  
Conversion: No

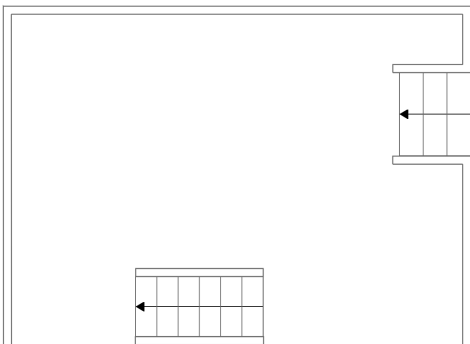
4 Floor 1 - Hall



Dimensions: 5'5" x 7'2"  
Area: 75 sq. ft  
Counted as living area: Yes

Heated: Yes  
Finished: Yes  
Enclosed: Yes  
Contiguous: Yes  
Permitted: Yes  
Wet space: No  
Addition: No  
Conversion: No

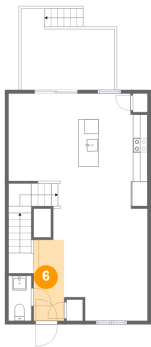
5 Floor 2 - Deck



Dimensions: 18'8" x 13'8"  
Area: 257 sq. ft  
Counted as living area: No

Heated: No  
Finished: Yes  
Enclosed: No  
Contiguous: Yes  
Permitted: Yes  
Wet space: No  
Addition: No  
Conversion: No

6 Floor 3 - Foyer



Dimensions: 4'2" x 11'2"  
Area: 47 sq. ft  
Counted as living area: Yes

Heated: Yes  
Finished: Yes  
Enclosed: Yes  
Contiguous: Yes  
Permitted: Yes  
Wet space: No  
Addition: No  
Conversion: No

7 Floor 3 - Dining Area



Dimensions: 9'4" x 15'6"  
Area: 174 sq. ft  
Counted as living area: Yes

Heated: Yes  
Finished: Yes  
Enclosed: Yes  
Contiguous: Yes  
Permitted: Yes  
Wet space: No  
Addition: No  
Conversion: No

8 Floor 3 - WC



Dimensions: 3'2" x 6'2"  
Area: 19 sq. ft  
Counted as living area: Yes

Heated: Yes  
Finished: Yes  
Enclosed: Yes  
Contiguous: Yes  
Permitted: Yes  
Wet space: Yes  
Addition: No  
Conversion: No



## Home report

10636 Brewerton Lane, Linganore, New Market, Frederick  
County, Maryland, United States, 21774

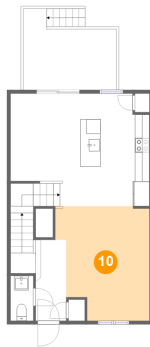
### 9 Floor 3 - Deck



Dimensions: 12'10" x 11'2"  
Area: 117 sq. ft  
Counted as living area: No

Heated: No  
Finished: Yes  
Enclosed: No  
Contiguous: Yes  
Permitted: Yes  
Wet space: No  
Addition: No  
Conversion: No

### 10 Floor 3 - Living Room



Dimensions: 13'0" x 15'9"  
Area: 178 sq. ft  
Counted as living area: Yes

Heated: Yes  
Finished: Yes  
Enclosed: Yes  
Contiguous: Yes  
Permitted: Yes  
Wet space: No  
Addition: No  
Conversion: No

### 11 Floor 3 - Kitchen

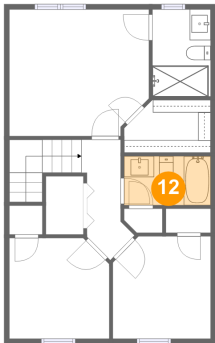


Dimensions: 9'10" x 15'6"  
Area: 145 sq. ft  
Counted as living area: Yes

Heated: Yes  
Finished: Yes  
Enclosed: Yes  
Contiguous: Yes  
Permitted: Yes  
Wet space: No  
Addition: No  
Conversion: No

10636 Brewerton Lane, Linganore, New Market, Frederick  
County, Maryland, United States, 21774

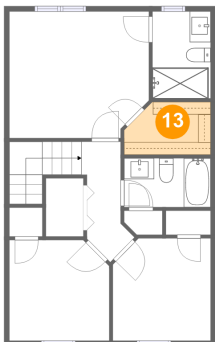
12 Floor 4 - Bath



Dimensions: 8'3" x 4'8"  
Area: 38 sq. ft  
Counted as living area: Yes

Heated: Yes  
Finished: Yes  
Enclosed: Yes  
Contiguous: Yes  
Permitted: Yes  
Wet space: Yes  
Addition: No  
Conversion: No

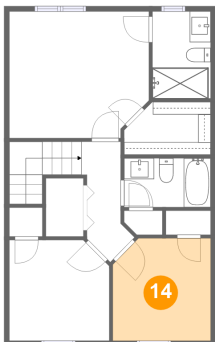
13 Floor 4 - W.I.C.



Dimensions: 8'3" x 5'0"  
Area: 38 sq. ft  
Counted as living area: Yes

Heated: Yes  
Finished: Yes  
Enclosed: Yes  
Contiguous: Yes  
Permitted: Yes  
Wet space: No  
Addition: No  
Conversion: No

14 Floor 4 - Bedroom



Dimensions: 9'3" x 9'9"  
Area: 88 sq. ft  
Counted as living area: Yes

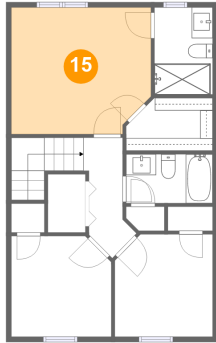
Heated: Yes  
Finished: Yes  
Enclosed: Yes  
Contiguous: Yes  
Permitted: Yes  
Wet space: No  
Addition: No  
Conversion: No

## Home report

10636 Brewerton Lane, Linganore, New Market, Frederick  
County, Maryland, United States, 21774

### 15 Floor 4 - Primary Bedroom

---

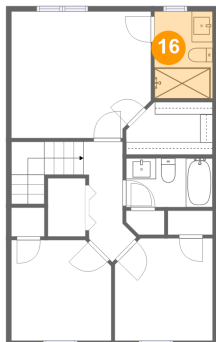


Dimensions: 13'3" x 12'0"  
Area: 154 sq. ft  
Counted as living area: Yes

Heated: Yes  
Finished: Yes  
Enclosed: Yes  
Contiguous: Yes  
Permitted: Yes  
Wet space: No  
Addition: No  
Conversion: No

### 16 Floor 4 - Bath

---

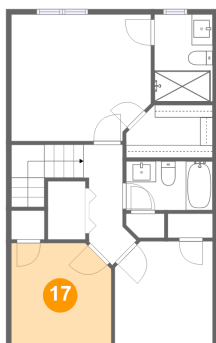


Dimensions: 5'6" x 8'3"  
Area: 46 sq. ft  
Counted as living area: Yes

Heated: Yes  
Finished: Yes  
Enclosed: Yes  
Contiguous: Yes  
Permitted: Yes  
Wet space: Yes  
Addition: No  
Conversion: No

### 17 Floor 4 - Bedroom

---



Dimensions: 9'6" x 9'7"  
Area: 88 sq. ft  
Counted as living area: Yes

Heated: Yes  
Finished: Yes  
Enclosed: Yes  
Contiguous: Yes  
Permitted: Yes  
Wet space: No  
Addition: No  
Conversion: No

10636 Brewerton Lane, Linganore, New Market, Frederick  
County, Maryland, United States, 21774

18 Floor 4 - Hall



Dimensions: 4'6" x 11'5"  
Area: 68 sq. ft  
Counted as living area: Yes

Heated: Yes  
Finished: Yes  
Enclosed: Yes  
Contiguous: Yes  
Permitted: Yes  
Wet space: No  
Addition: No  
Conversion: No