


Home report

807 North Carolina Highway 22, Ramseur, Randolph County,
North Carolina, United States, 27316



Property summary

 **1** Garages

 **5** Bedrooms

 **3** Bathrooms

 **0** Half baths

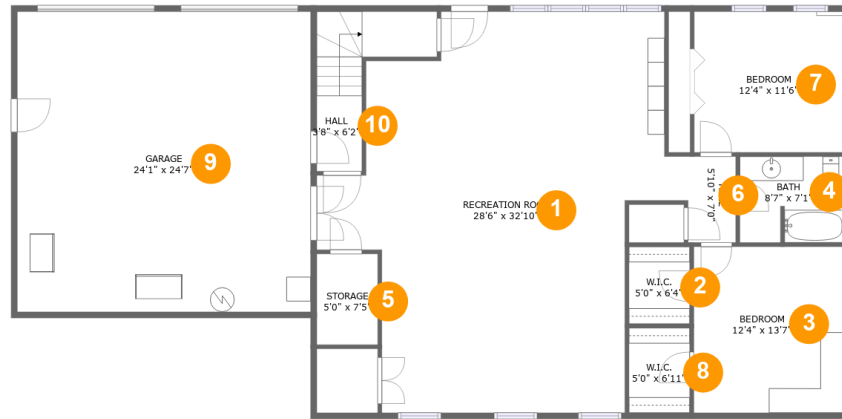
 **2** Floors

 **3,588**
Gross living
area sqft

 **4,517**
Total sqft

Home report

807 North Carolina Highway 22, Ramseur, Randolph County,
North Carolina, United States, 27316



Room dimensions

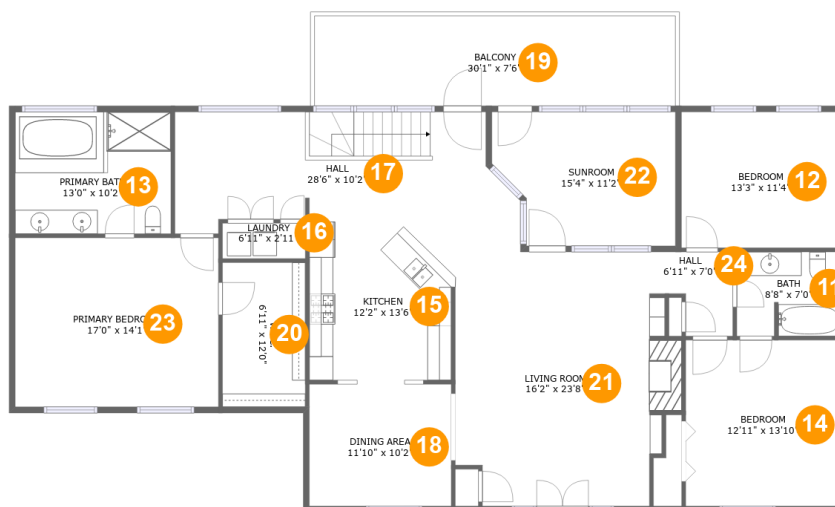
Floor 1

Total sqft: 2128 Living area: 1425

#		Dimensions	sqft	Counted as living area
1	Recreation Room	28'6" x 32'10"	730 sq. ft	Yes
2	W.I.C.	5'0" x 6'4"	32 sq. ft	Yes
3	Bedroom	12'4" x 13'7"	168 sq. ft	Yes
4	Bath	8'7" x 7'1"	60 sq. ft	Yes
5	Storage	5'0" x 7'5"	37 sq. ft	No
6	Hall	5'10" x 7'0"	35 sq. ft	Yes
7	Bedroom	12'4" x 11'6"	142 sq. ft	Yes
8	W.I.C.	5'0" x 6'11"	35 sq. ft	Yes
9	Garage	24'1" x 24'7"	591 sq. ft	No
10	Hall	3'8" x 6'2"	71 sq. ft	Yes

Home report

807 North Carolina Highway 22, Ramseur, Randolph County, North Carolina, United States, 27316



Room dimensions

Floor 2

Total sqft: 2389 Living area: 2163

#		Dimensions	sqft	Counted as living area
11	Bath	8'8" x 7'0"	60 sq. ft	Yes
12	Bedroom	13'3" x 11'4"	151 sq. ft	Yes
13	Primary Bath	13'0" x 10'2"	132 sq. ft	Yes
14	Bedroom	12'11" x 13'10"	179 sq. ft	Yes
15	Kitchen	12'2" x 13'6"	160 sq. ft	Yes
16	Laundry	6'11" x 2'11"	20 sq. ft	Yes
17	Hall	28'6" x 10'2"	249 sq. ft	Yes
18	Dining Area	11'10" x 10'2"	120 sq. ft	Yes
19	Balcony	30'1" x 7'6"	226 sq. ft	No
20	W.I.C.	6'11" x 12'0"	83 sq. ft	Yes
21	Living Room	16'2" x 23'8"	373 sq. ft	Yes

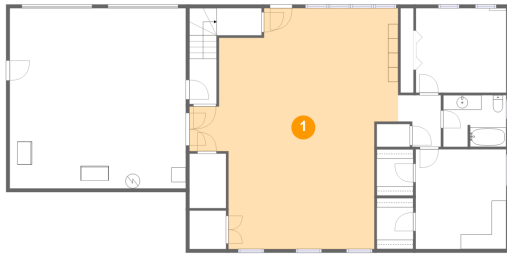
Home report

**807 North Carolina Highway 22, Ramseur, Randolph County,
North Carolina, United States, 27316**

#		Dimensions	sqft	Counted as living area
22	Sunroom	15'4" x 11'2"	155 sq. ft	Yes
23	Primary Bedroom	17'0" x 14'1"	239 sq. ft	Yes
24	Hall	6'11" x 7'0"	38 sq. ft	Yes

807 North Carolina Highway 22, Ramseur, Randolph County,
North Carolina, United States, 27316

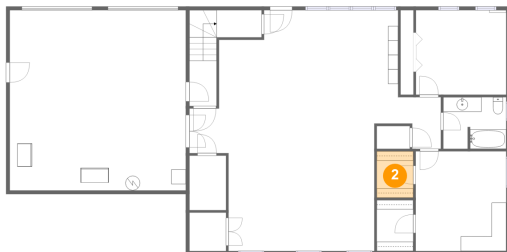
1 Floor 1 - Recreation Room



Dimensions: 28'6" x 32'10"
Area: 730 sq. ft
Counted as living area: Yes

Heated: Yes
Finished: Yes
Enclosed: Yes
Contiguous: Yes
Permitted: Yes
Wet space: No
Addition: No
Conversion: No

2 Floor 1 - W.I.C.

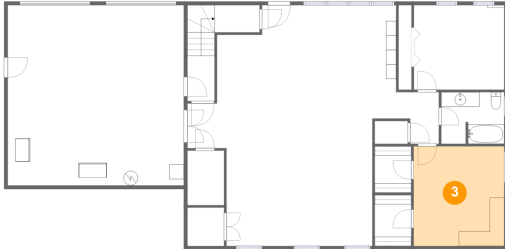


Dimensions: 5'0" x 6'4"
Area: 32 sq. ft
Counted as living area: Yes

Heated: Yes
Finished: Yes
Enclosed: Yes
Contiguous: Yes
Permitted: Yes
Wet space: No
Addition: No
Conversion: No

807 North Carolina Highway 22, Ramseur, Randolph County,
North Carolina, United States, 27316

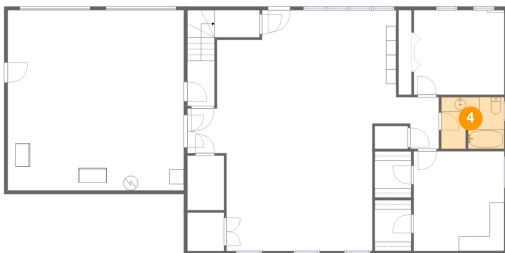
3 Floor 1 - Bedroom



Dimensions: 12'4" x 13'7"
Area: 168 sq. ft
Counted as living area: Yes

Heated: Yes
Finished: Yes
Enclosed: Yes
Contiguous: Yes
Permitted: Yes
Wet space: No
Addition: No
Conversion: No

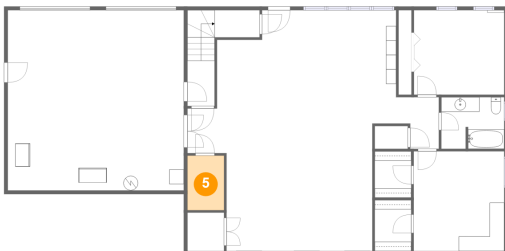
4 Floor 1 - Bath



Dimensions: 8'7" x 7'1"
Area: 60 sq. ft
Counted as living area: Yes

Heated: Yes
Finished: Yes
Enclosed: Yes
Contiguous: Yes
Permitted: Yes
Wet space: Yes
Addition: No
Conversion: No

5 Floor 1 - Storage

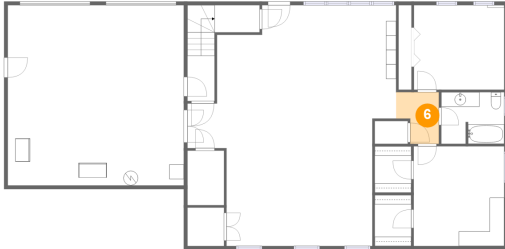


Dimensions: 5'0" x 7'5"
Area: 37 sq. ft
Counted as living area: No

Heated: No
Finished: No
Enclosed: No
Contiguous: Yes
Permitted: Yes
Wet space: No
Addition: No
Conversion: No

807 North Carolina Highway 22, Ramseur, Randolph County,
North Carolina, United States, 27316

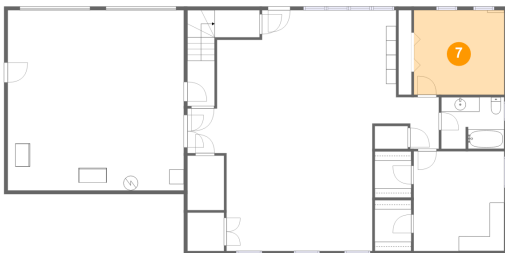
6 Floor 1 - Hall



Dimensions: 5'10" x 7'0"
Area: 35 sq. ft
Counted as living area: Yes

Heated: Yes
Finished: Yes
Enclosed: Yes
Contiguous: Yes
Permitted: Yes
Wet space: No
Addition: No
Conversion: No

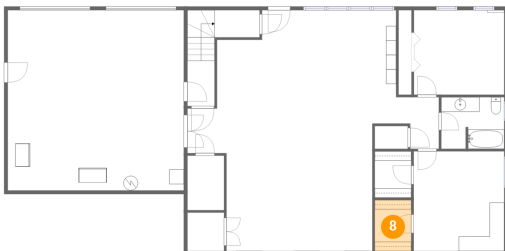
7 Floor 1 - Bedroom



Dimensions: 12'4" x 11'6"
Area: 142 sq. ft
Counted as living area: Yes

Heated: Yes
Finished: Yes
Enclosed: Yes
Contiguous: Yes
Permitted: Yes
Wet space: No
Addition: No
Conversion: No

8 Floor 1 - W.I.C.

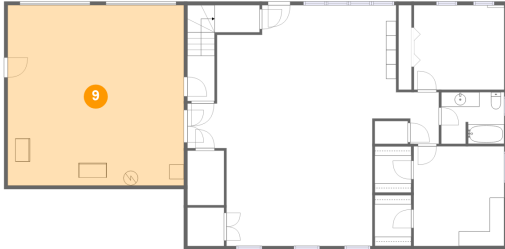


Dimensions: 5'0" x 6'11"
Area: 35 sq. ft
Counted as living area: Yes

Heated: Yes
Finished: Yes
Enclosed: Yes
Contiguous: Yes
Permitted: Yes
Wet space: No
Addition: No
Conversion: No

807 North Carolina Highway 22, Ramseur, Randolph County,
North Carolina, United States, 27316

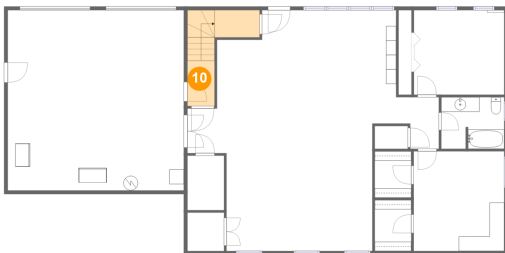
9 Floor 1 - Garage



Dimensions: 24'1" x 24'7"
Area: 591 sq. ft
Counted as living area: No

Heated: No
Finished: No
Enclosed: Yes
Contiguous: Yes
Permitted: Yes
Wet space: No
Addition: No
Conversion: No

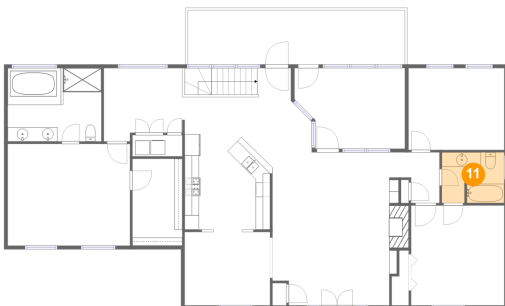
10 Floor 1 - Hall



Dimensions: 3'8" x 6'2"
Area: 71 sq. ft
Counted as living area: Yes

Heated: Yes
Finished: Yes
Enclosed: Yes
Contiguous: Yes
Permitted: Yes
Wet space: No
Addition: No
Conversion: No

11 Floor 2 - Bath

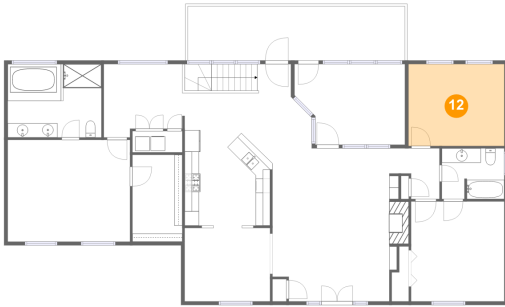


Dimensions: 8'8" x 7'0"
Area: 60 sq. ft
Counted as living area: Yes

Heated: Yes
Finished: Yes
Enclosed: Yes
Contiguous: Yes
Permitted: Yes
Wet space: Yes
Addition: No
Conversion: No

807 North Carolina Highway 22, Ramseur, Randolph County,
North Carolina, United States, 27316

12 Floor 2 - Bedroom



Dimensions: 13'3" x 11'4"
Area: 151 sq. ft
Counted as living area: Yes

Heated: Yes
Finished: Yes
Enclosed: Yes
Contiguous: Yes
Permitted: Yes
Wet space: No
Addition: No
Conversion: No

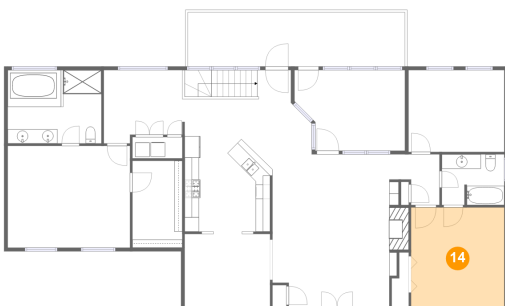
13 Floor 2 - Primary Bath



Dimensions: 13'0" x 10'2"
Area: 132 sq. ft
Counted as living area: Yes

Heated: Yes
Finished: Yes
Enclosed: Yes
Contiguous: Yes
Permitted: Yes
Wet space: Yes
Addition: No
Conversion: No

14 Floor 2 - Bedroom

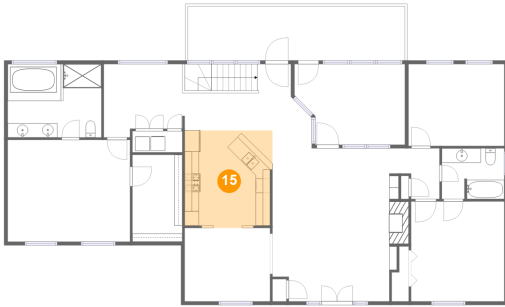


Dimensions: 12'11" x 13'10"
Area: 179 sq. ft
Counted as living area: Yes

Heated: Yes
Finished: Yes
Enclosed: Yes
Contiguous: Yes
Permitted: Yes
Wet space: No
Addition: No
Conversion: No

807 North Carolina Highway 22, Ramseur, Randolph County,
North Carolina, United States, 27316

15 Floor 2 - Kitchen



Dimensions: 12'2" x 13'6"
Area: 160 sq. ft
Counted as living area: Yes

Heated: Yes
Finished: Yes
Enclosed: Yes
Contiguous: Yes
Permitted: Yes
Wet space: No
Addition: No
Conversion: No

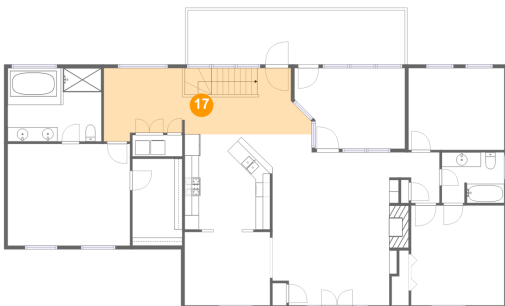
16 Floor 2 - Laundry



Dimensions: 6'11" x 2'11"
Area: 20 sq. ft
Counted as living area: Yes

Heated: Yes
Finished: Yes
Enclosed: Yes
Contiguous: Yes
Permitted: Yes
Wet space: No
Addition: No
Conversion: No

17 Floor 2 - Hall

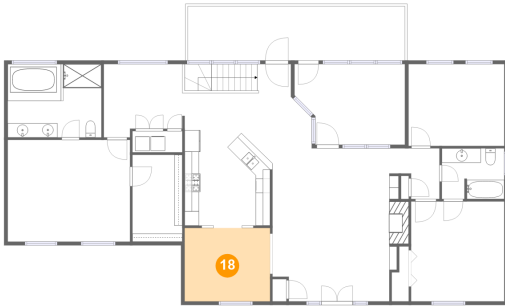


Dimensions: 28'6" x 10'2"
Area: 249 sq. ft
Counted as living area: Yes

Heated: Yes
Finished: Yes
Enclosed: Yes
Contiguous: Yes
Permitted: Yes
Wet space: No
Addition: No
Conversion: No

807 North Carolina Highway 22, Ramseur, Randolph County,
North Carolina, United States, 27316

18 Floor 2 - Dining Area



Dimensions: 11'10" x 10'2"
Area: 120 sq. ft
Counted as living area: Yes

Heated: Yes
Finished: Yes
Enclosed: Yes
Contiguous: Yes
Permitted: Yes
Wet space: No
Addition: No
Conversion: No

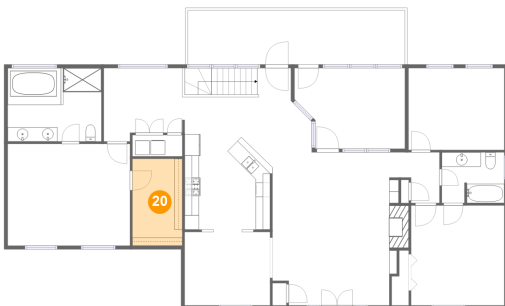
19 Floor 2 - Balcony



Dimensions: 30'1" x 7'6"
Area: 226 sq. ft
Counted as living area: No

Heated: No
Finished: Yes
Enclosed: No
Contiguous: Yes
Permitted: Yes
Wet space: No
Addition: No
Conversion: No

20 Floor 2 - W.I.C.

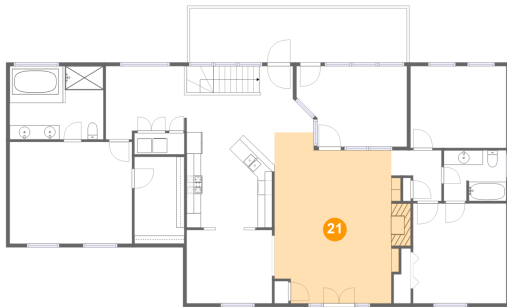


Dimensions: 6'11" x 12'0"
Area: 83 sq. ft
Counted as living area: Yes

Heated: Yes
Finished: Yes
Enclosed: Yes
Contiguous: Yes
Permitted: Yes
Wet space: No
Addition: No
Conversion: No

807 North Carolina Highway 22, Ramseur, Randolph County,
North Carolina, United States, 27316

21 Floor 2 - Living Room



Dimensions: 16'2" x 23'8"
Area: 373 sq. ft
Counted as living area: Yes

Heated: Yes
Finished: Yes
Enclosed: Yes
Contiguous: Yes
Permitted: Yes
Wet space: No
Addition: No
Conversion: No

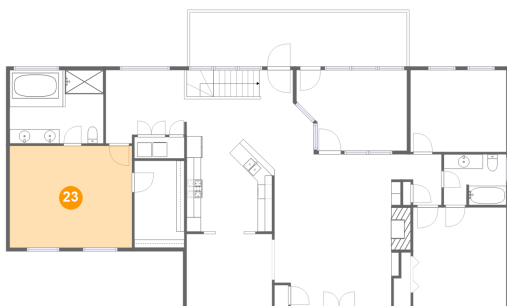
22 Floor 2 - Sunroom



Dimensions: 15'4" x 11'2"
Area: 155 sq. ft
Counted as living area: Yes

Heated: Yes
Finished: Yes
Enclosed: Yes
Contiguous: Yes
Permitted: Yes
Wet space: No
Addition: No
Conversion: No

23 Floor 2 - Primary Bedroom



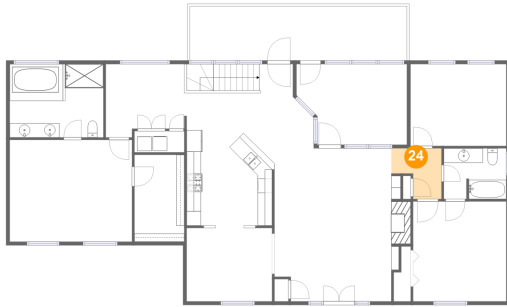
Dimensions: 17'0" x 14'1"
Area: 239 sq. ft
Counted as living area: Yes

Heated: Yes
Finished: Yes
Enclosed: Yes
Contiguous: Yes
Permitted: Yes
Wet space: No
Addition: No
Conversion: No

Home report

807 North Carolina Highway 22, Ramseur, Randolph County,
North Carolina, United States, 27316

24 Floor 2 - Hall



Dimensions: 6'11" x 7'0"
Area: 38 sq. ft
Counted as living area: Yes

Heated: Yes
Finished: Yes
Enclosed: Yes
Contiguous: Yes
Permitted: Yes
Wet space: No
Addition: No
Conversion: No