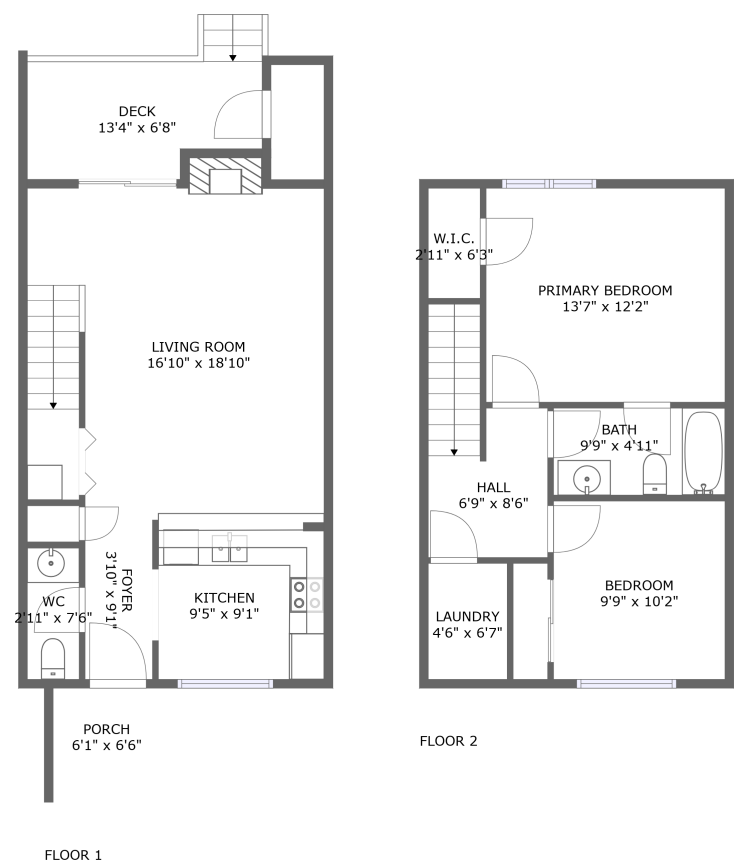


Home report

7228 Woods Crossing Drive, Woods Crossing, Cave Spring,
Roanoke, Roanoke County, Virginia, United States, 24018



Total Area: 944 sq. ft

Floor 1: 473 sq. ft, Floor 2: 471 sq. ft

Excluded: Undefined 20 sq. ft, Deck 81 sq. ft, Porch 39 sq. ft, Fireplace 9 sq. ft, Walls: 105 sq. ft

Property summary

 **2** Floors

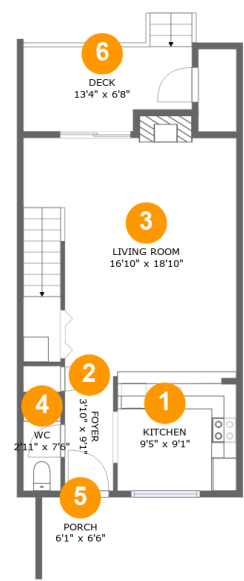
 **2** Bedrooms

 **1** Bathrooms

 **1** Half baths

Home report

7228 Woods Crossing Drive, Woods Crossing, Cave Spring,
Roanoke, Roanoke County, Virginia, United States, 24018



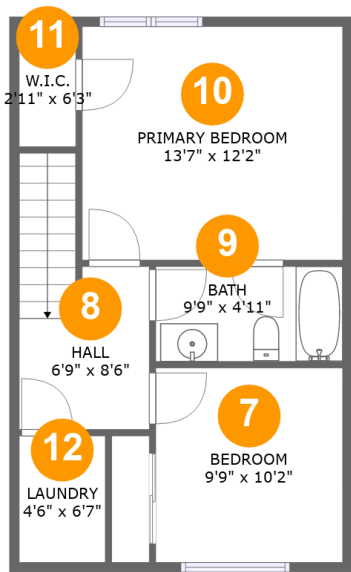
Room dimensions

Floor 1 Total:473sqft Excluded: 149sqft

#		Max Dimensions	sqft	Included
1	Kitchen	9'5" x 9'1"	85 sq. ft	Yes
2	Foyer	3'10" x 9'1"	35 sq. ft	Yes
3	Living Room	16'10" x 18'10"	318 sq. ft	Yes
4	WC	2'11" x 7'6"	22 sq. ft	Yes
5	Porch	6'1" x 6'6"	39 sq. ft	No
6	Deck	13'4" x 6'8"	81 sq. ft	No

Home report

7228 Woods Crossing Drive, Woods Crossing, Cave Spring,
Roanoke, Roanoke County, Virginia, United States, 24018



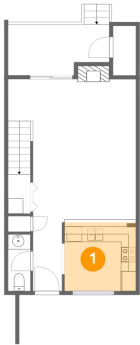
Room dimensions

Floor 2 Total:471sqft Excluded: 0sqft

#		Max Dimensions	sqft	Included
7	Bedroom	9'9" x 10'2"	99 sq. ft	Yes
8	Hall	6'9" x 8'6"	74 sq. ft	Yes
9	Bath	9'9" x 4'11"	48 sq. ft	Yes
10	Primary Bedroom	13'7" x 12'2"	165 sq. ft	Yes
11	W.I.C.	2'11" x 6'3"	18 sq. ft	Yes
12	Laundry	4'6" x 6'7"	30 sq. ft	Yes

7228 Woods Crossing Drive, Woods Crossing, Cave Spring,
Roanoke, Roanoke County, Virginia, United States, 24018

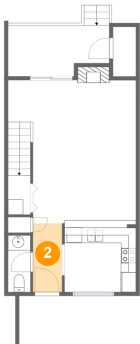
1 Floor 1 - Kitchen



Max Dimensions: 9'5" x 9'1"
Calculated Area: 85 sq. ft
Included: Yes

Heated: Yes
Finished: Yes
Enclosed: Yes
Contiguous: Yes
Permitted: Yes
Wet space: No
Addition: No
Conversion: No

2 Floor 1 - Foyer



Max Dimensions: 3'10" x 9'1"
Calculated Area: 35 sq. ft
Included: Yes

Heated: Yes
Finished: Yes
Enclosed: Yes
Contiguous: Yes
Permitted: Yes
Wet space: No
Addition: No
Conversion: No

7228 Woods Crossing Drive, Woods Crossing, Cave Spring,
Roanoke, Roanoke County, Virginia, United States, 24018

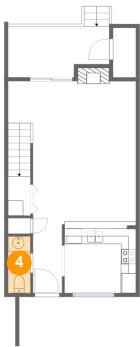
3 Floor 1 - Living Room



Max Dimensions: 16'10" x 18'10"
Calculated Area: 318 sq. ft
Included: Yes

Heated: Yes
Finished: Yes
Enclosed: Yes
Contiguous: Yes
Permitted: Yes
Wet space: No
Addition: No
Conversion: No

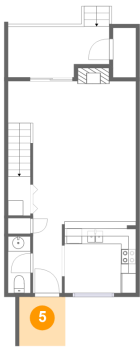
4 Floor 1 - WC



Max Dimensions: 2'11" x 7'6"
Calculated Area: 22 sq. ft
Included: Yes

Heated: Yes
Finished: Yes
Enclosed: Yes
Contiguous: Yes
Permitted: Yes
Wet space: Yes
Addition: No
Conversion: No

5 Floor 1 - Porch

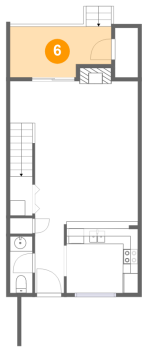


Max Dimensions: 6'1" x 6'6"
Calculated Area: 39 sq. ft
Included: No

Heated: No
Finished: Yes
Enclosed: No
Contiguous: Yes
Permitted: Yes
Wet space: No
Addition: No
Conversion: No

7228 Woods Crossing Drive, Woods Crossing, Cave Spring,
Roanoke, Roanoke County, Virginia, United States, 24018

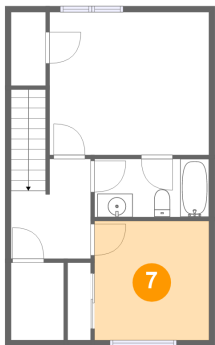
6 Floor 1 - Deck



Max Dimensions: 13'4" x 6'8"
Calculated Area: 81 sq. ft
Included: No

Heated: No
Finished: Yes
Enclosed: No
Contiguous: Yes
Permitted: Yes
Wet space: No
Addition: No
Conversion: No

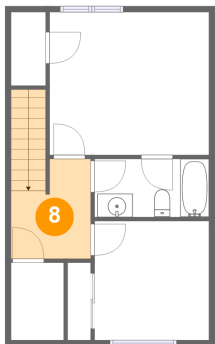
7 Floor 2 - Bedroom



Max Dimensions: 9'9" x 10'2"
Calculated Area: 99 sq. ft
Included: Yes

Heated: Yes
Finished: Yes
Enclosed: Yes
Contiguous: Yes
Permitted: Yes
Wet space: No
Addition: No
Conversion: No

8 Floor 2 - Hall

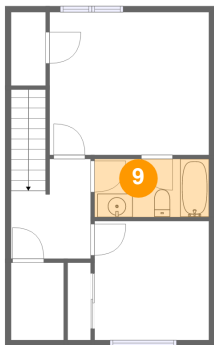


Max Dimensions: 6'9" x 8'6"
Calculated Area: 74 sq. ft
Included: Yes

Heated: Yes
Finished: Yes
Enclosed: Yes
Contiguous: Yes
Permitted: Yes
Wet space: No
Addition: No
Conversion: No

7228 Woods Crossing Drive, Woods Crossing, Cave Spring,
Roanoke, Roanoke County, Virginia, United States, 24018

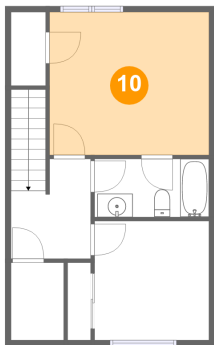
9 Floor 2 - Bath



Max Dimensions: 9'9" x 4'11"
Calculated Area: 48 sq. ft
Included: Yes

Heated: Yes
Finished: Yes
Enclosed: Yes
Contiguous: Yes
Permitted: Yes
Wet space: Yes
Addition: No
Conversion: No

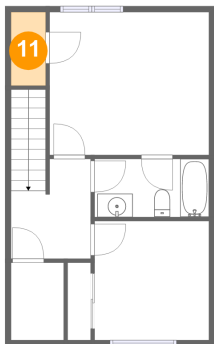
10 Floor 2 - Primary Bedroom



Max Dimensions: 13'7" x 12'2"
Calculated Area: 165 sq. ft
Included: Yes

Heated: Yes
Finished: Yes
Enclosed: Yes
Contiguous: Yes
Permitted: Yes
Wet space: No
Addition: No
Conversion: No

11 Floor 2 - W.I.C.

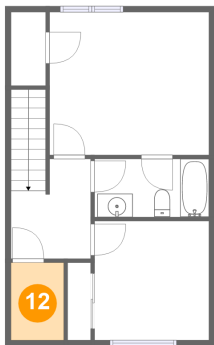


Max Dimensions: 2'11" x 6'3"
Calculated Area: 18 sq. ft
Included: Yes

Heated: Yes
Finished: Yes
Enclosed: Yes
Contiguous: Yes
Permitted: Yes
Wet space: No
Addition: No
Conversion: No

7228 Woods Crossing Drive, Woods Crossing, Cave Spring,
Roanoke, Roanoke County, Virginia, United States, 24018

12 Floor 2 - Laundry



Max Dimensions: 4'6" x 6'7"
Calculated Area: 30 sq. ft
Included: Yes

Heated: Yes
Finished: Yes
Enclosed: Yes
Contiguous: Yes
Permitted: Yes
Wet space: No
Addition: No
Conversion: No