

Home data report

24 Cleland Ave, Lampman, Ancaster, Ontario, Canada, L9K 0J9



Total Area: 1382 sq. ft

Basement: 0 sq. ft, 1st Floor: 596 sq. ft, 2nd Floor: 786 sq. ft

Excluded: Basement 586 sq. ft, Garage 201 sq. ft

Property summary

 **3** Floors

 **3** Bedrooms

 **2** Bathrooms

Home data report

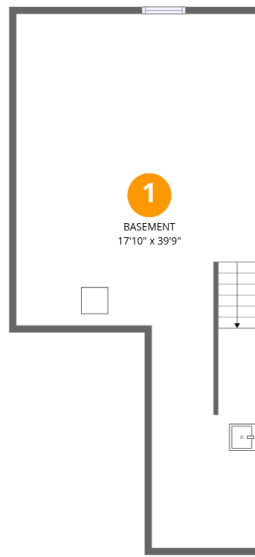
24 Cleland Ave, Lampman, Ancaster, Ontario, Canada, L9K 0J9

 **1**
Half baths

 **1**
Garages

Home data report

24 Cleland Ave, Lampman, Ancaster, Ontario, Canada, L9K 0J9



Room dimensions

Floor 1 Below grade

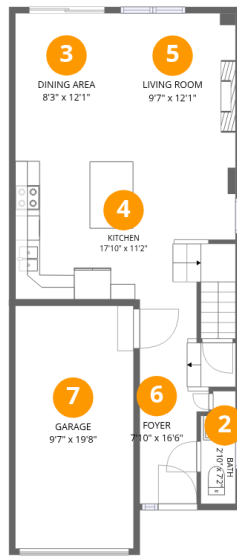
Total:0sqft

Excluded: 586sqft

#		Dimensions	sqft	Counted as living area
1	Basement	17'10" x 39'9"	544 sq. ft	No

Home data report

24 Cleland Ave, Lampman, Ancaster, Ontario, Canada, L9K 0J9



Room dimensions

Floor 2

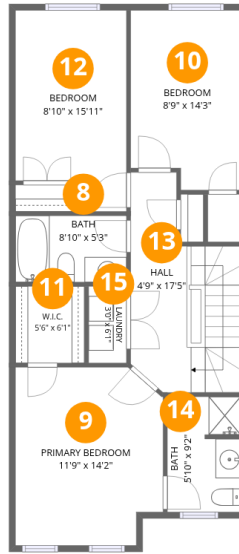
Total:596sqft

Excluded: 201sqft

#		Dimensions	sqft	Counted as living area
2	Bath	2'10" x 7'2"	20 sq. ft	Yes
3	Dining Area	8'3" x 12'1"	100 sq. ft	Yes
4	Kitchen	17'10" x 11'2"	207 sq. ft	Yes
5	Living Room	9'7" x 12'1"	115 sq. ft	Yes
6	Foyer	7'10" x 16'6"	90 sq. ft	Yes
7	Garage	9'7" x 19'8"	189 sq. ft	No

Home data report

24 Cleland Ave, Lampman, Ancaster, Ontario, Canada, L9K 0J9



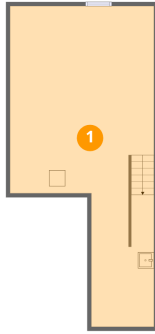
Room dimensions

Floor 3

Total:786sqft Excluded: 0sqft

#		Dimensions	sqft	Counted as living area
8	Bath	8'10" x 5'3"	46 sq. ft	Yes
9	Primary Bedroom	11'9" x 14'2"	157 sq. ft	Yes
10	Bedroom	8'9" x 14'3"	117 sq. ft	Yes
11	W.I.C.	5'6" x 6'1"	33 sq. ft	Yes
12	Bedroom	8'10" x 15'11"	127 sq. ft	Yes
13	Hall	4'9" x 17'5"	120 sq. ft	Yes
14	Bath	5'10" x 9'2"	52 sq. ft	Yes
15	Laundry	3'0" x 6'1"	18 sq. ft	Yes

1 Floor 1 - Basement



Dimensions: 17'10" x 39'9"
Area: 544 sq. ft
Counted as living area: No

Heated: Yes
Finished: No
Enclosed: Yes
Contiguous: Yes
Permitted: Yes
Wet space: No
Addition: No
Conversion: No

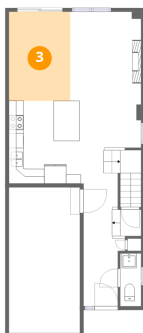
2 Floor 2 - Bath



Dimensions: 2'10" x 7'2"
Area: 20 sq. ft
Counted as living area: Yes

Heated: Yes
Finished: Yes
Enclosed: Yes
Contiguous: Yes
Permitted: Yes
Wet space: Yes
Addition: No
Conversion: No

3 Floor 2 - Dining Area



Dimensions: 8'3" x 12'1"
Area: 100 sq. ft
Counted as living area: Yes

Heated: Yes
Finished: Yes
Enclosed: Yes
Contiguous: Yes
Permitted: Yes
Wet space: No
Addition: No
Conversion: No

4 Floor 2 - Kitchen



Dimensions: 17'10" x 11'2"
Area: 207 sq. ft
Counted as living area: Yes

Heated: Yes
Finished: Yes
Enclosed: Yes
Contiguous: Yes
Permitted: Yes
Wet space: No
Addition: No
Conversion: No

5 Floor 2 - Living Room



Dimensions: 9'7" x 12'1"
Area: 115 sq. ft
Counted as living area: Yes

Heated: Yes
Finished: Yes
Enclosed: Yes
Contiguous: Yes
Permitted: Yes
Wet space: No
Addition: No
Conversion: No

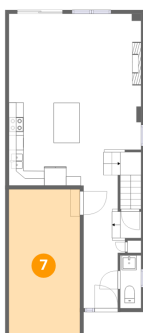
6 Floor 2 - Foyer



Dimensions: 7'10" x 16'6"
Area: 90 sq. ft
Counted as living area: Yes

Heated: Yes
Finished: Yes
Enclosed: Yes
Contiguous: Yes
Permitted: Yes
Wet space: No
Addition: No
Conversion: No

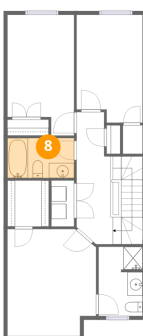
7 Floor 2 - Garage



Dimensions: 9'7" x 19'8"
Area: 189 sq. ft
Counted as living area: No

Heated: No
Finished: No
Enclosed: Yes
Contiguous: Yes
Permitted: Yes
Wet space: No
Addition: No
Conversion: No

8 Floor 3 - Bath



Dimensions: 8'10" x 5'3"
Area: 46 sq. ft
Counted as living area: Yes

Heated: Yes
Finished: Yes
Enclosed: Yes
Contiguous: Yes
Permitted: Yes
Wet space: Yes
Addition: No
Conversion: No

9 Floor 3 - Primary Bedroom



Dimensions: 11'9" x 14'2"
Area: 157 sq. ft
Counted as living area: Yes

Heated: Yes
Finished: Yes
Enclosed: Yes
Contiguous: Yes
Permitted: Yes
Wet space: No
Addition: No
Conversion: No

10 Floor 3 - Bedroom



Dimensions: 8'9" x 14'3"
Area: 117 sq. ft
Counted as living area: Yes

Heated: Yes
Finished: Yes
Enclosed: Yes
Contiguous: Yes
Permitted: Yes
Wet space: No
Addition: No
Conversion: No

11 Floor 3 - W.I.C.



Dimensions: 5'6" x 6'1"
Area: 33 sq. ft
Counted as living area: Yes

Heated: Yes
Finished: Yes
Enclosed: Yes
Contiguous: Yes
Permitted: Yes
Wet space: No
Addition: No
Conversion: No

12 Floor 3 - Bedroom



Dimensions: 8'10" x 15'11"
Area: 127 sq. ft
Counted as living area: Yes

Heated: Yes
Finished: Yes
Enclosed: Yes
Contiguous: Yes
Permitted: Yes
Wet space: No
Addition: No
Conversion: No

13 Floor 3 - Hall



Dimensions: 4'9" x 17'5"
Area: 120 sq. ft
Counted as living area: Yes

Heated: Yes
Finished: Yes
Enclosed: Yes
Contiguous: Yes
Permitted: Yes
Wet space: No
Addition: No
Conversion: No

14 Floor 3 - Bath



Dimensions: 5'10" x 9'2"
Area: 52 sq. ft
Counted as living area: Yes

Heated: Yes
Finished: Yes
Enclosed: Yes
Contiguous: Yes
Permitted: Yes
Wet space: Yes
Addition: No
Conversion: No

15 Floor 3 - Laundry



Dimensions: 3'0" x 6'1"
Area: 18 sq. ft
Counted as living area: Yes

Heated: Yes
Finished: Yes
Enclosed: Yes
Contiguous: Yes
Permitted: Yes
Wet space: No
Addition: No
Conversion: No