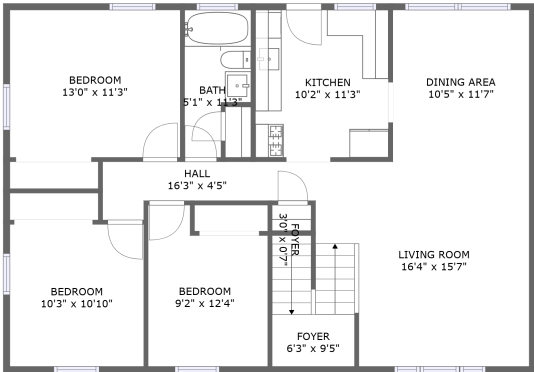
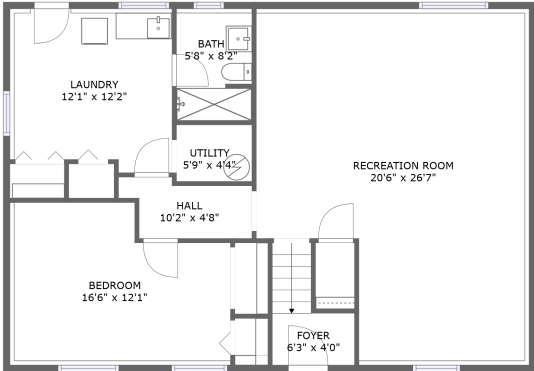


Home report

1108 Emerald Drive, Naperville, DuPage County, Illinois, United States, 60540



FLOOR 2



FLOOR 1

Property summary



0 Garages



4 Bedrooms



2 Bathrooms



0 Half baths



2 Floors



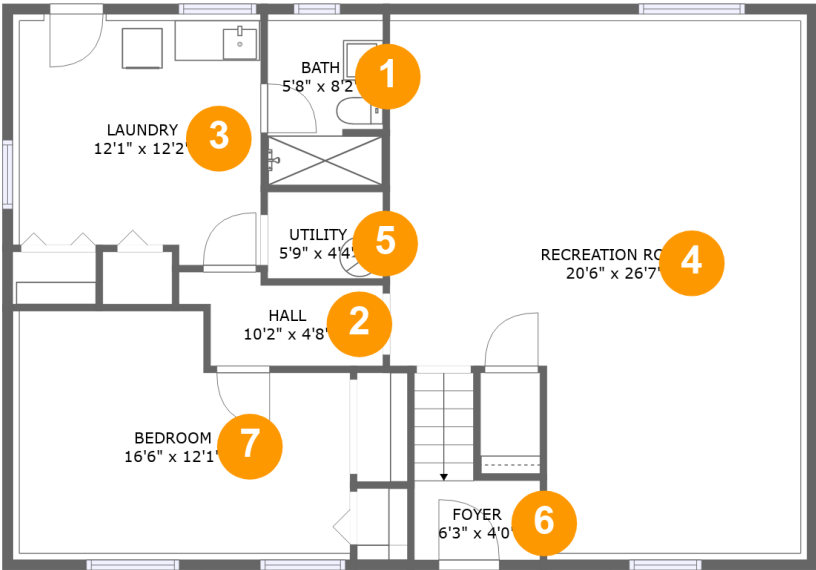
2,300 Gross living area sqft



2,300 Total sqft

Home report

1108 Emerald Drive, Naperville, DuPage County, Illinois, United States, 60540



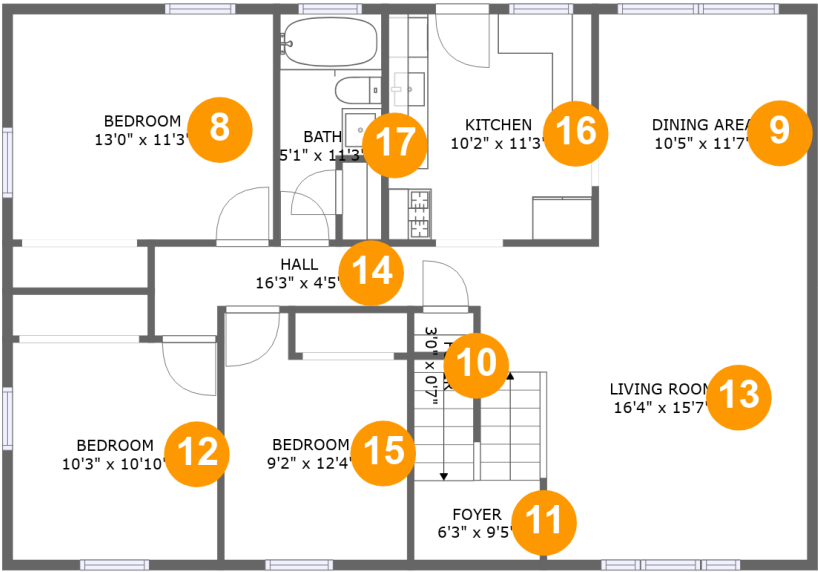
Room dimensions

Floor 1 Total sqft: 1150 Living area: 1150

#		Dimensions	sqft	Counted as living area
1	Bath	5'8" x 8'2"	49 sq. ft	Yes
2	Hall	10'2" x 4'8"	39 sq. ft	Yes
3	Laundry	12'1" x 12'2"	147 sq. ft	Yes
4	Recreation Room	20'6" x 26'7"	493 sq. ft	Yes
5	Utility	5'9" x 4'4"	25 sq. ft	Yes
6	Foyer	6'3" x 4'0"	41 sq. ft	Yes
7	Bedroom	16'6" x 12'1"	187 sq. ft	Yes

Home report

1108 Emerald Drive, Naperville, DuPage County, Illinois, United States, 60540

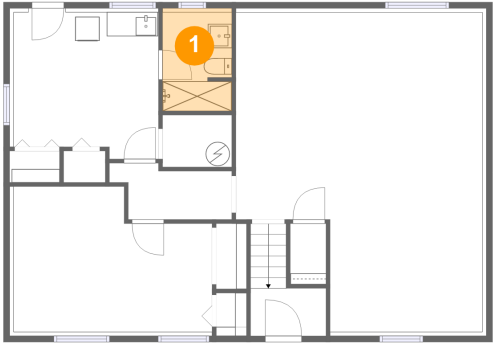


Room dimensions

Floor 2 Total sqft: 1150 Living area: 1150

#		Dimensions	sqft	Counted as living area
8	Bedroom	13'0" x 11'3"	147 sq. ft	Yes
9	Dining Area	10'5" x 11'7"	121 sq. ft	Yes
10	Foyer	3'0" x 0'7"	2 sq. ft	Yes
11	Foyer	6'3" x 9'5"	58 sq. ft	Yes
12	Bedroom	10'3" x 10'10"	111 sq. ft	Yes
13	Living Room	16'4" x 15'7"	226 sq. ft	Yes
14	Hall	16'3" x 4'5"	53 sq. ft	Yes
15	Bedroom	9'2" x 12'4"	99 sq. ft	Yes
16	Kitchen	10'2" x 11'3"	115 sq. ft	Yes
17	Bath	5'1" x 11'3"	48 sq. ft	Yes

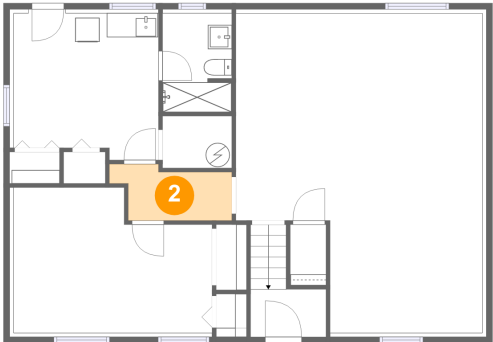
1 Floor 1 - Bath



Dimensions: 5'8" x 8'2"
Area: 49 sq. ft
Counted as living area: Yes

Heated: Yes
Finished: Yes
Enclosed: Yes
Contiguous: Yes
Permitted: Yes
Wet space: Yes
Addition: No
Conversion: No

2 Floor 1 - Hall

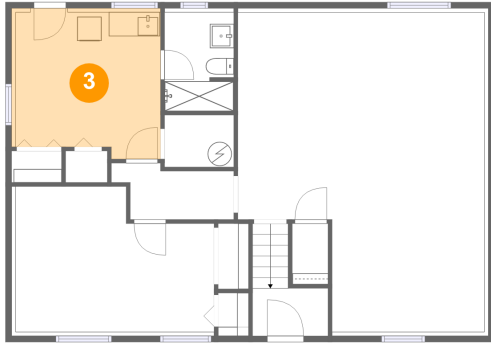


Dimensions: 10'2" x 4'8"
Area: 39 sq. ft
Counted as living area: Yes

Heated: Yes
Finished: Yes
Enclosed: Yes
Contiguous: Yes
Permitted: Yes
Wet space: No
Addition: No
Conversion: No

1108 Emerald Drive, Naperville, DuPage County, Illinois, United States, 60540

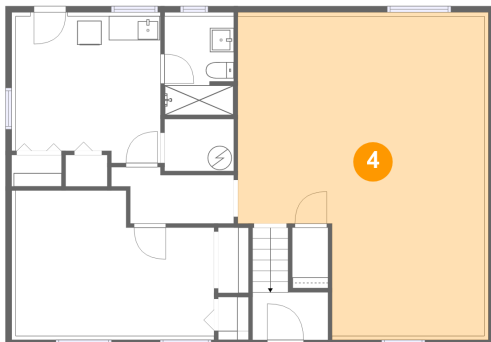
3 Floor 1 - Laundry



Dimensions: 12'1" x 12'2"
Area: 147 sq. ft
Counted as living area: Yes

Heated: Yes
Finished: Yes
Enclosed: Yes
Contiguous: Yes
Permitted: Yes
Wet space: No
Addition: No
Conversion: No

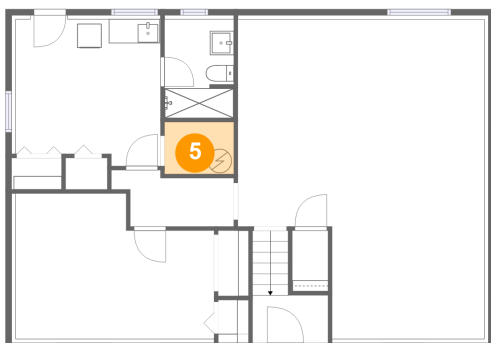
4 Floor 1 - Recreation Room



Dimensions: 20'6" x 26'7"
Area: 493 sq. ft
Counted as living area: Yes

Heated: Yes
Finished: Yes
Enclosed: Yes
Contiguous: Yes
Permitted: Yes
Wet space: No
Addition: No
Conversion: No

5 Floor 1 - Utility



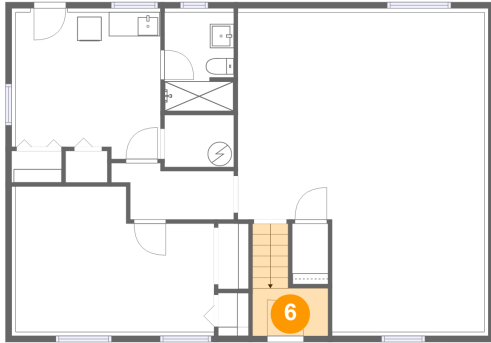
Dimensions: 5'9" x 4'4"
Area: 25 sq. ft
Counted as living area: Yes

Heated: Yes
Finished: Yes
Enclosed: Yes
Contiguous: Yes
Permitted: Yes
Wet space: No
Addition: No
Conversion: No

Home report

1108 Emerald Drive, Naperville, DuPage County, Illinois, United States, 60540

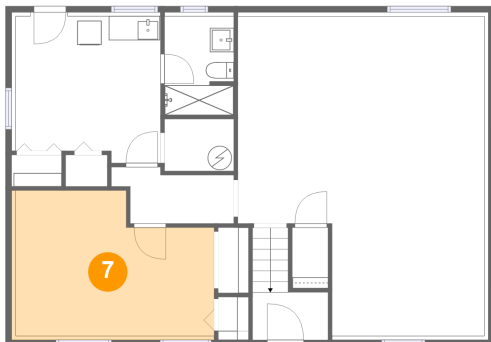
6 Floor 1 - Foyer



Dimensions: 6'3" x 4'0"
Area: 41 sq. ft
Counted as living area: Yes

Heated: Yes
Finished: Yes
Enclosed: Yes
Contiguous: Yes
Permitted: Yes
Wet space: No
Addition: No
Conversion: No

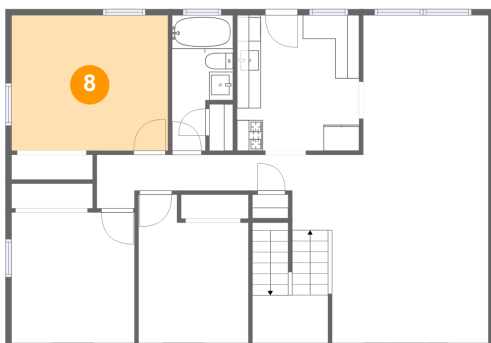
7 Floor 1 - Bedroom



Dimensions: 16'6" x 12'1"
Area: 187 sq. ft
Counted as living area: Yes

Heated: Yes
Finished: Yes
Enclosed: Yes
Contiguous: Yes
Permitted: Yes
Wet space: No
Addition: No
Conversion: No

8 Floor 2 - Bedroom



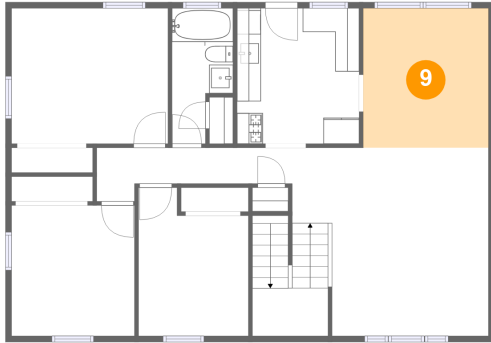
Dimensions: 13'0" x 11'3"
Area: 147 sq. ft
Counted as living area: Yes

Heated: Yes
Finished: Yes
Enclosed: Yes
Contiguous: Yes
Permitted: Yes
Wet space: No
Addition: No
Conversion: No

Home report

1108 Emerald Drive, Naperville, DuPage County, Illinois, United States, 60540

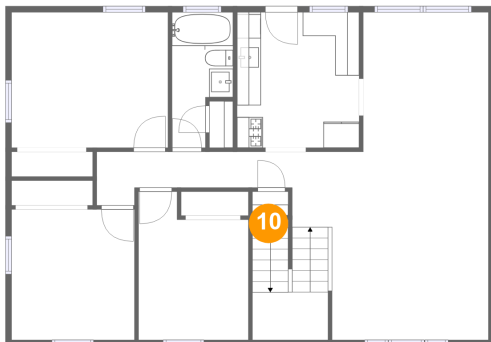
9 Floor 2 - Dining Area



Dimensions: 10'5" x 11'7"
Area: 121 sq. ft
Counted as living area: Yes

Heated: Yes
Finished: Yes
Enclosed: Yes
Contiguous: Yes
Permitted: Yes
Wet space: No
Addition: No
Conversion: No

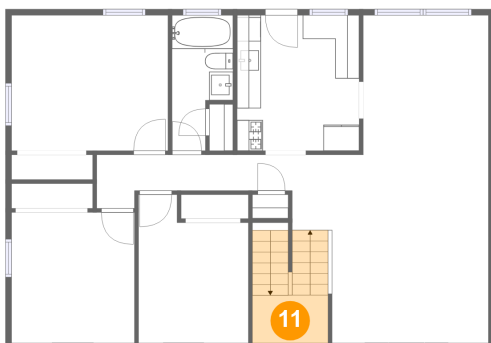
10 Floor 2 - Foyer



Dimensions: 3'0" x 0'7"
Area: 2 sq. ft
Counted as living area: Yes

Heated: Yes
Finished: Yes
Enclosed: Yes
Contiguous: Yes
Permitted: Yes
Wet space: No
Addition: No
Conversion: No

11 Floor 2 - Foyer



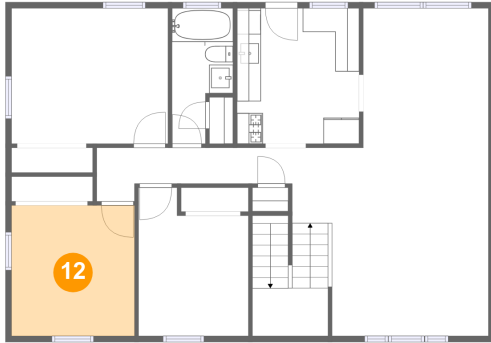
Dimensions: 6'3" x 9'5"
Area: 58 sq. ft
Counted as living area: Yes

Heated: Yes
Finished: Yes
Enclosed: Yes
Contiguous: Yes
Permitted: Yes
Wet space: No
Addition: No
Conversion: No

Home report

1108 Emerald Drive, Naperville, DuPage County, Illinois, United States, 60540

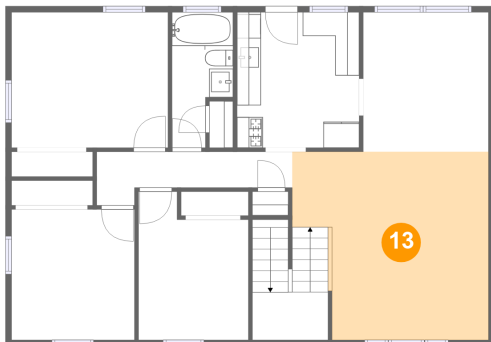
12 Floor 2 - Bedroom



Dimensions: 10'3" x 10'10"
Area: 111 sq. ft
Counted as living area: Yes

Heated: Yes
Finished: Yes
Enclosed: Yes
Contiguous: Yes
Permitted: Yes
Wet space: No
Addition: No
Conversion: No

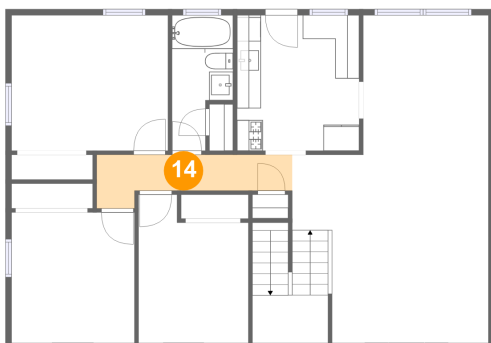
13 Floor 2 - Living Room



Dimensions: 16'4" x 15'7"
Area: 226 sq. ft
Counted as living area: Yes

Heated: Yes
Finished: Yes
Enclosed: Yes
Contiguous: Yes
Permitted: Yes
Wet space: No
Addition: No
Conversion: No

14 Floor 2 - Hall



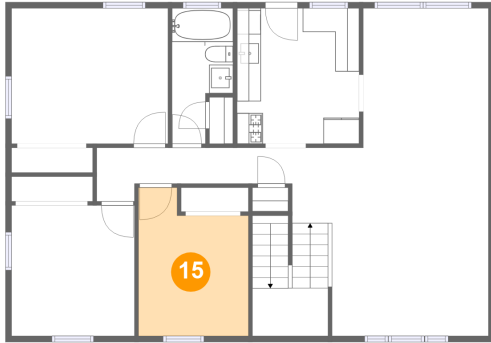
Dimensions: 16'3" x 4'5"
Area: 53 sq. ft
Counted as living area: Yes

Heated: Yes
Finished: Yes
Enclosed: Yes
Contiguous: Yes
Permitted: Yes
Wet space: No
Addition: No
Conversion: No

Home report

1108 Emerald Drive, Naperville, DuPage County, Illinois, United States, 60540

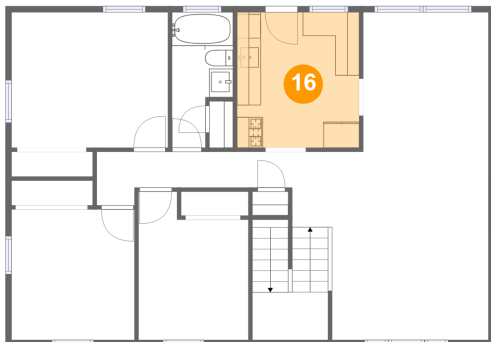
15 Floor 2 - Bedroom



Dimensions: 9'2" x 12'4"
Area: 99 sq. ft
Counted as living area: Yes

Heated: Yes
Finished: Yes
Enclosed: Yes
Contiguous: Yes
Permitted: Yes
Wet space: No
Addition: No
Conversion: No

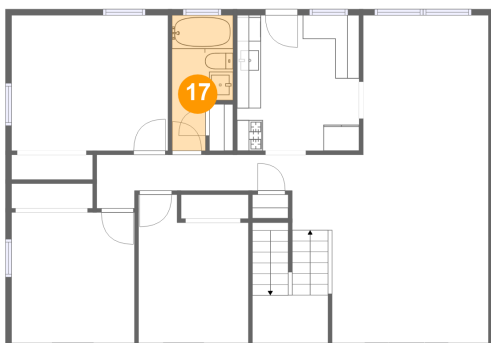
16 Floor 2 - Kitchen



Dimensions: 10'2" x 11'3"
Area: 115 sq. ft
Counted as living area: Yes

Heated: Yes
Finished: Yes
Enclosed: Yes
Contiguous: Yes
Permitted: Yes
Wet space: No
Addition: No
Conversion: No

17 Floor 2 - Bath



Dimensions: 5'1" x 11'3"
Area: 48 sq. ft
Counted as living area: Yes

Heated: Yes
Finished: Yes
Enclosed: Yes
Contiguous: Yes
Permitted: Yes
Wet space: Yes
Addition: No
Conversion: No