

Home report

290 Wood Brook Road, Westlake Corner, Moneta, Franklin County, Virginia, United States, 24121



Total Area: 2822 sq. ft
Floor 1: 1267 sq. ft, Floor 2: 1555 sq. ft
Excluded: Electrical room 288 sq. ft, Covered patio 379 sq. ft, Garage 424 sq. ft, Deck 674 sq. ft, Porch 146 sq. ft, Walls: 195 sq. ft

Property summary

**2**
Floors

**4**
Bedrooms

**2**
Bathrooms

Home report

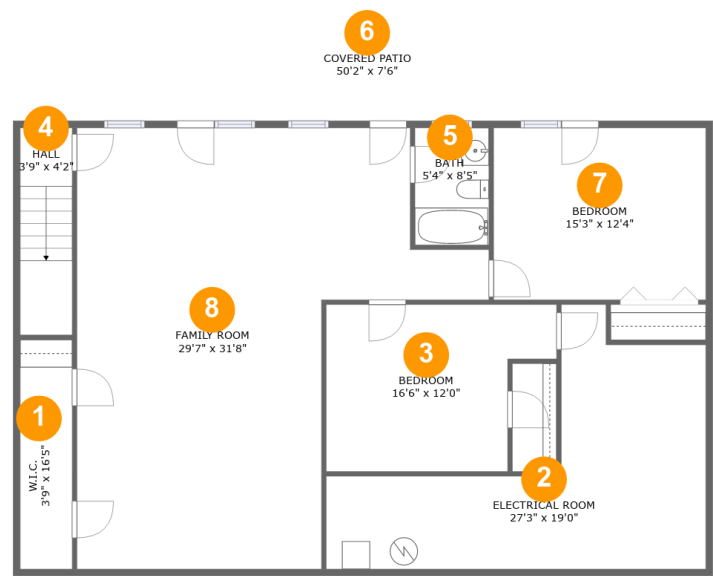
290 Wood Brook Road, Westlake Corner, Moneta, Franklin
County, Virginia, United States, 24121

 **1**
Half baths

 **1**
Garages

Home report

290 Wood Brook Road, Westlake Corner, Moneta, Franklin
County, Virginia, United States, 24121



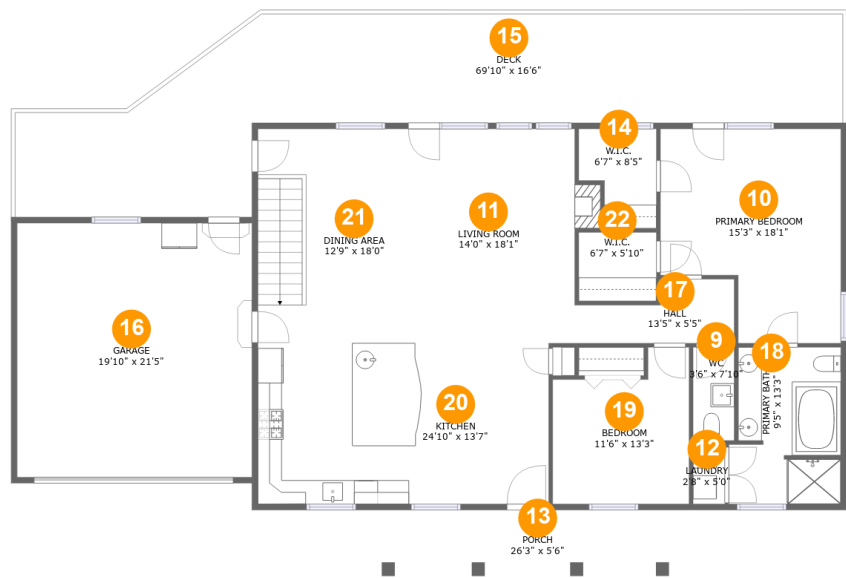
Room dimensions

Floor 1 Total:1267sqft Excluded: 667sqft

#		Max Dimensions	sqft	Included
1	W.I.C.	3'9" x 16'5"	61 sq. ft	Yes
2	Electrical Room	27'3" x 19'0"	288 sq. ft	No
3	Bedroom	16'6" x 12'0"	170 sq. ft	Yes
4	Hall	3'9" x 4'2"	16 sq. ft	Yes
5	Bath	5'4" x 8'5"	45 sq. ft	Yes
6	Covered Patio	50'2" x 7'6"	379 sq. ft	No
7	Bedroom	15'3" x 12'4"	188 sq. ft	Yes
8	Family Room	29'7" x 31'8"	654 sq. ft	Yes

Home report

290 Wood Brook Road, Westlake Corner, Moneta, Franklin
County, Virginia, United States, 24121



Room dimensions

Floor 2 Total:1555sqft Excluded: 1244sqft

#		Max Dimensions	sqft	Included
9	WC	3'6" x 7'10"	27 sq. ft	Yes
10	Primary Bedroom	15'3" x 18'1"	237 sq. ft	Yes
11	Living Room	14'0" x 18'1"	261 sq. ft	Yes
12	Laundry	2'8" x 5'0"	13 sq. ft	Yes
13	Porch	26'3" x 5'6"	146 sq. ft	No
14	W.I.C.	6'7" x 8'5"	46 sq. ft	Yes
15	Deck	69'10" x 16'6"	674 sq. ft	No
16	Garage	19'10" x 21'5"	424 sq. ft	No
17	Hall	13'5" x 5'5"	57 sq. ft	Yes
18	Primary Bath	9'5" x 13'3"	116 sq. ft	Yes
19	Bedroom	11'6" x 13'3"	130 sq. ft	Yes

Home report

290 Wood Brook Road, Westlake Corner, Moneta, Franklin
County, Virginia, United States, 24121

#		Max Dimensions	sqft	Included
20	Kitchen	24'10" x 13'7"	333 sq. ft	Yes
21	Dining Area	12'9" x 18'0"	230 sq. ft	Yes
22	W.I.C.	6'7" x 5'10"	38 sq. ft	Yes

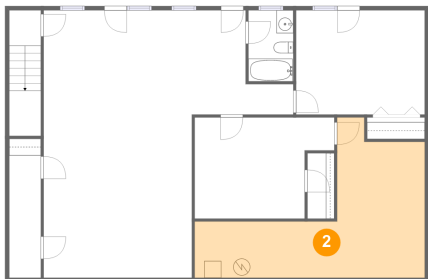
1 Floor 1 - W.I.C.



Max Dimensions: 3'9" x 16'5"
Calculated Area: 61 sq. ft
Included: Yes

Heated: Yes
Finished: Yes
Enclosed: Yes
Contiguous: Yes
Permitted: Yes
Wet space: No
Addition: No
Conversion: No

2 Floor 1 - Electrical Room



Max Dimensions: 27'3" x 19'0"
Calculated Area: 288 sq. ft
Included: No

Heated: No
Finished: No
Enclosed: Yes
Contiguous: Yes
Permitted: Yes
Wet space: No
Addition: No
Conversion: No

3 Floor 1 - Bedroom



Max Dimensions: 16'6" x 12'0"
Calculated Area: 170 sq. ft
Included: Yes

Heated: Yes
Finished: Yes
Enclosed: Yes
Contiguous: Yes
Permitted: Yes
Wet space: No
Addition: No
Conversion: No

4 Floor 1 - Hall



Max Dimensions: 3'9" x 4'2"
Calculated Area: 16 sq. ft
Included: Yes

Heated: Yes
Finished: Yes
Enclosed: Yes
Contiguous: Yes
Permitted: Yes
Wet space: No
Addition: No
Conversion: No

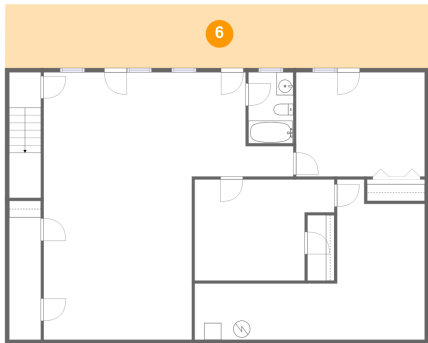
5 Floor 1 - Bath



Max Dimensions: 5'4" x 8'5"
Calculated Area: 45 sq. ft
Included: Yes

Heated: Yes
Finished: Yes
Enclosed: Yes
Contiguous: Yes
Permitted: Yes
Wet space: Yes
Addition: No
Conversion: No

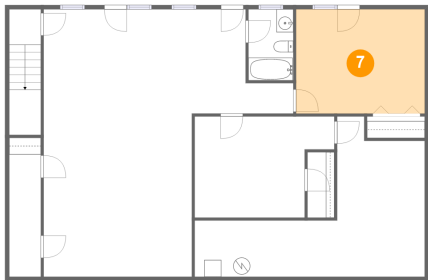
6 Floor 1 - Covered Patio



Max Dimensions: 50'2" x 7'6"
Calculated Area: 379 sq. ft
Included: No

Heated: No
Finished: Yes
Enclosed: No
Contiguous: Yes
Permitted: Yes
Wet space: No
Addition: No
Conversion: No

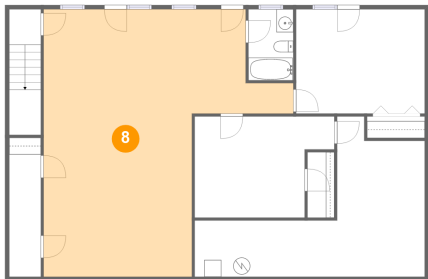
7 Floor 1 - Bedroom



Max Dimensions: 15'3" x 12'4"
Calculated Area: 188 sq. ft
Included: Yes

Heated: Yes
Finished: Yes
Enclosed: Yes
Contiguous: Yes
Permitted: Yes
Wet space: No
Addition: No
Conversion: No

8 Floor 1 - Family Room



Max Dimensions: 29'7" x 31'8"
Calculated Area: 654 sq. ft
Included: Yes

Heated: Yes
Finished: Yes
Enclosed: Yes
Contiguous: Yes
Permitted: Yes
Wet space: No
Addition: No
Conversion: No

290 Wood Brook Road, Westlake Corner, Moneta, Franklin
County, Virginia, United States, 24121

9 Floor 2 - WC



Max Dimensions: 3'6" x 7'10"
Calculated Area: 27 sq. ft
Included: Yes

Heated: Yes
Finished: Yes
Enclosed: Yes
Contiguous: Yes
Permitted: Yes
Wet space: Yes
Addition: No
Conversion: No

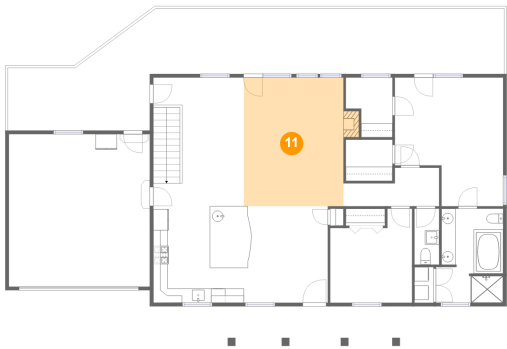
10 Floor 2 - Primary Bedroom



Max Dimensions: 15'3" x 18'1"
Calculated Area: 237 sq. ft
Included: Yes

Heated: Yes
Finished: Yes
Enclosed: Yes
Contiguous: Yes
Permitted: Yes
Wet space: No
Addition: No
Conversion: No

11 Floor 2 - Living Room



Max Dimensions: 14'0" x 18'1"
Calculated Area: 261 sq. ft
Included: Yes

Heated: Yes
Finished: Yes
Enclosed: Yes
Contiguous: Yes
Permitted: Yes
Wet space: No
Addition: No
Conversion: No

Home report

290 Wood Brook Road, Westlake Corner, Moneta, Franklin
County, Virginia, United States, 24121

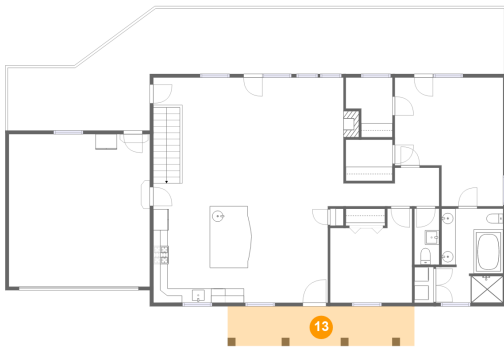
12 Floor 2 - Laundry



Max Dimensions: 2'8" x 5'0"
Calculated Area: 13 sq. ft
Included: Yes

Heated: Yes
Finished: Yes
Enclosed: Yes
Contiguous: Yes
Permitted: Yes
Wet space: No
Addition: No
Conversion: No

13 Floor 2 - Porch



Max Dimensions: 26'3" x
5'6"
Calculated Area: 146 sq. ft
Included: No

Heated: No
Finished: Yes
Enclosed: No
Contiguous:
Yes
Permitted: Yes
Wet space: No
Addition: No
Conversion: No

14 Floor 2 - W.I.C.



Max Dimensions: 6'7" x 8'5"
Calculated Area: 46 sq. ft
Included: Yes

Heated: Yes
Finished: Yes
Enclosed: Yes
Contiguous: Yes
Permitted: Yes
Wet space: No
Addition: No
Conversion: No

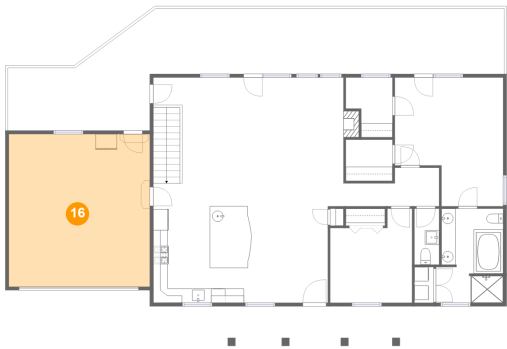
15 Floor 2 - Deck



Max Dimensions: 69'10" x 16'6"
Calculated Area: 674 sq. ft
Included: No

Heated: No
Finished: Yes
Enclosed: No
Contiguous: No
Permitted: Yes
Wet space: No
Addition: No
Conversion: No

16 Floor 2 - Garage



Max Dimensions: 19'10" x 21'5"
Calculated Area: 424 sq. ft
Included: No

Heated: No
Finished: No
Enclosed: Yes
Contiguous: Yes
Permitted: Yes
Wet space: No
Addition: No
Conversion: No

17 Floor 2 - Hall



Max Dimensions: 13'5" x 5'5"
Calculated Area: 57 sq. ft
Included: Yes

Heated: Yes
Finished: Yes
Enclosed: Yes
Contiguous: Yes
Permitted: Yes
Wet space: No
Addition: No
Conversion: No

290 Wood Brook Road, Westlake Corner, Moneta, Franklin
County, Virginia, United States, 24121

18 Floor 2 - Primary Bath



Max Dimensions: 9'5" x 13'3"
Calculated Area: 116 sq. ft
Included: Yes

Heated: Yes
Finished: Yes
Enclosed: Yes
Contiguous: Yes
Permitted: Yes
Wet space: Yes
Addition: No
Conversion: No

19 Floor 2 - Bedroom



Max Dimensions: 11'6" x 13'3"
Calculated Area: 130 sq. ft
Included: Yes

Heated: Yes
Finished: Yes
Enclosed: Yes
Contiguous: Yes
Permitted: Yes
Wet space: No
Addition: No
Conversion: No

20 Floor 2 - Kitchen

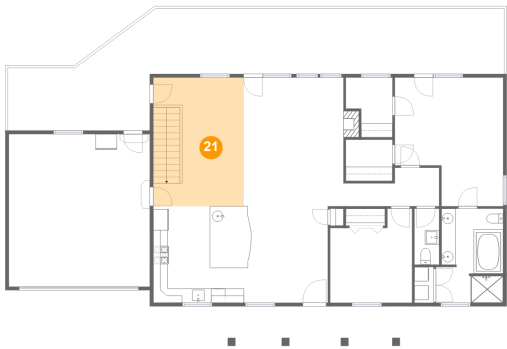


Max Dimensions: 24'10" x 13'7"
Calculated Area: 333 sq. ft
Included: Yes

Heated: Yes
Finished: Yes
Enclosed: Yes
Contiguous: Yes
Permitted: Yes
Wet space: No
Addition: No
Conversion: No

290 Wood Brook Road, Westlake Corner, Moneta, Franklin
County, Virginia, United States, 24121

21 Floor 2 - Dining Area



Max Dimensions: 12'9" x 18'0"
Calculated Area: 230 sq. ft
Included: Yes

Heated: Yes
Finished: Yes
Enclosed: Yes
Contiguous: Yes
Permitted: Yes
Wet space: No
Addition: No
Conversion: No

22 Floor 2 - W.I.C.



Max Dimensions: 6'7" x 5'10"
Calculated Area: 38 sq. ft
Included: Yes

Heated: Yes
Finished: Yes
Enclosed: Yes
Contiguous: Yes
Permitted: Yes
Wet space: No
Addition: No
Conversion: No