



Total Area: 2721 sq. ft

1st Floor: 1188 sq. ft, 2nd Floor: 1533 sq. ft

Excluded: Garage 410 sq. ft, Covered patio 257 sq. ft, Storage 37 sq. ft, Walls: 184 sq. ft


Property summary



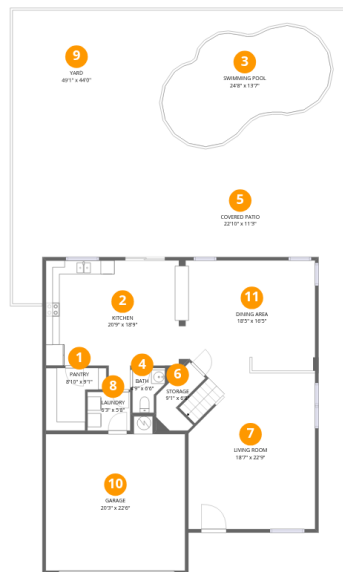
Home data report



5009 W. Granite Creek Court, Las Vegas, Nevada, United States

 **1**
Half baths

 **1**
Garages

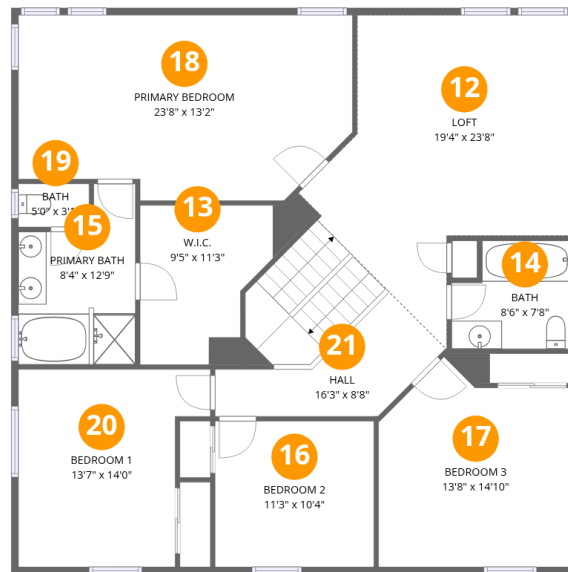


Room dimensions

Floor 1

Total: 1188sqft Excluded: 704sqft

#		Dimensions	sqft	Counted as living area
1	Pantry	8'10" x 9'1"	80 sq. ft	Yes
2	Kitchen	20'9" x 18'9"	390 sq. ft	Yes
3	Swimming Pool	24'8" x 13'7"	336 sq. ft	No
4	Bath	4'9" x 6'6"	31 sq. ft	Yes
5	Covered Patio	22'10" x 11'3"	257 sq. ft	No
6	Storage	9'1" x 6'8"	61 sq. ft	No
7	Living Room	18'7" x 22'9"	422 sq. ft	Yes
8	Laundry	6'3" x 5'8"	35 sq. ft	Yes
9	Yard	49'1" x 44'0"	2161 sq. ft	No
10	Garage	20'3" x 22'6"	455 sq. ft	No
11	Dining Area	18'5" x 16'5"	302 sq. ft	Yes



Room dimensions

Floor 2

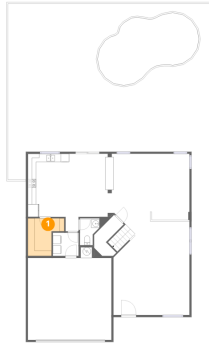
Total: 1533 sqft

Excluded: 0 sqft

#		Dimensions	sqft	Counted as living area
12	Loft	19'4" x 23'8"	456 sq. ft	Yes
13	W.I.C.	9'5" x 11'3"	106 sq. ft	Yes
14	Bath	8'6" x 7'8"	65 sq. ft	Yes
15	Primary Bath	8'4" x 12'9"	106 sq. ft	Yes
16	Bedroom 2	11'3" x 10'4"	116 sq. ft	Yes
17	Bedroom 3	13'8" x 14'10"	203 sq. ft	Yes
18	Primary Bedroom	23'8" x 13'2"	311 sq. ft	Yes
19	Bath	5'0" x 3'1"	15 sq. ft	Yes
20	Bedroom 1	13'7" x 14'0"	191 sq. ft	Yes
21	Hall	16'3" x 8'8"	141 sq. ft	Yes

5009 W. Granite Creek Court, Las Vegas, Nevada, United States

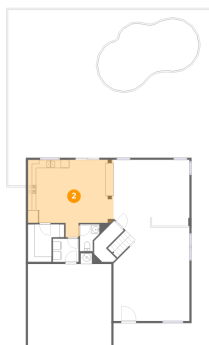
1 Floor 1 - Pantry



Dimensions: 8'10" x 9'1"
Area: 80 sq. ft
Counted as living area: Yes

Heated: Yes
Finished: Yes
Enclosed: Yes
Contiguous: Yes
Permitted: Yes
Wet space: No
Addition: No
Conversion: No

2 Floor 1 - Kitchen

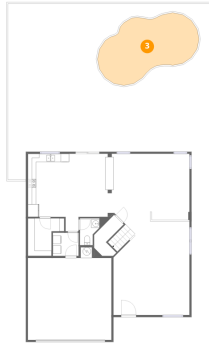


Dimensions: 20'9" x 18'9"
Area: 390 sq. ft
Counted as living area: Yes

Heated: Yes
Finished: Yes
Enclosed: Yes
Contiguous: Yes
Permitted: Yes
Wet space: No
Addition: No
Conversion: No

5009 W. Granite Creek Court, Las Vegas, Nevada, United States

3 Floor 1 - Swimming Pool



Dimensions: 24'8" x 13'7"
Area: 336 sq. ft
Counted as living area: No

Heated: No
Finished: No
Enclosed: No
Contiguous: Yes
Permitted: No
Wet space: No
Addition: No
Conversion: No

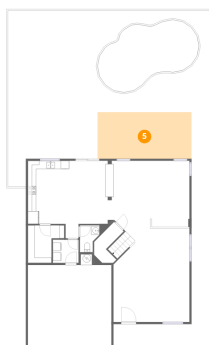
4 Floor 1 - Bath



Dimensions: 4'9" x 6'6"
Area: 31 sq. ft
Counted as living area: Yes

Heated: Yes
Finished: Yes
Enclosed: Yes
Contiguous: Yes
Permitted: Yes
Wet space: Yes
Addition: No
Conversion: No

5 Floor 1 - Covered Patio

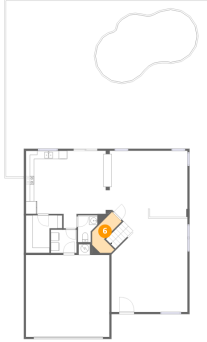


Dimensions: 22'10" x 11'3"
Area: 257 sq. ft
Counted as living area: No

Heated: No
Finished: No
Enclosed: No
Contiguous: Yes
Permitted: Yes
Wet space: No
Addition: No
Conversion: No

5009 W. Granite Creek Court, Las Vegas, Nevada, United States

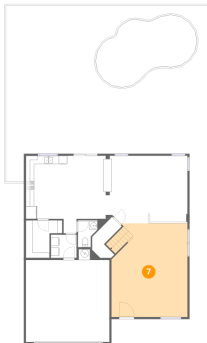
6 Floor 1 - Storage



Dimensions: 9'1" x 6'8"
Area: 61 sq. ft
Counted as living area: No

Heated: No
Finished: No
Enclosed: No
Contiguous: Yes
Permitted: Yes
Wet space: No
Addition: No
Conversion: No

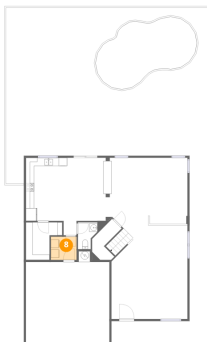
7 Floor 1 - Living Room



Dimensions: 18'7" x 22'9"
Area: 422 sq. ft
Counted as living area: Yes

Heated: Yes
Finished: Yes
Enclosed: Yes
Contiguous: Yes
Permitted: Yes
Wet space: No
Addition: No
Conversion: No

8 Floor 1 - Laundry

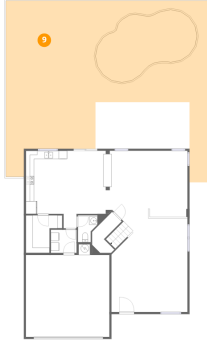


Dimensions: 6'3" x 5'8"
Area: 35 sq. ft
Counted as living area: Yes

Heated: Yes
Finished: Yes
Enclosed: Yes
Contiguous: Yes
Permitted: Yes
Wet space: No
Addition: No
Conversion: No

5009 W. Granite Creek Court, Las Vegas, Nevada, United States

9 Floor 1 - Yard



Dimensions: 49'1" x 44'0"
Area: 2161 sq. ft
Counted as living area: No

Heated: No
Finished: No
Enclosed: No
Contiguous: Yes
Permitted: No
Wet space: No
Addition: No
Conversion: No

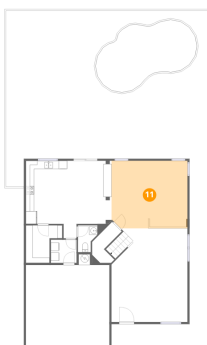
10 Floor 1 - Garage



Dimensions: 20'3" x 22'6"
Area: 455 sq. ft
Counted as living area: No

Heated: No
Finished: No
Enclosed: Yes
Contiguous: Yes
Permitted: Yes
Wet space: No
Addition: No
Conversion: No

11 Floor 1 - Dining Area

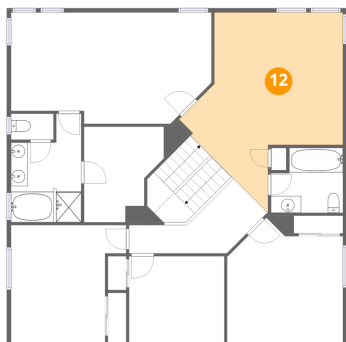


Dimensions: 18'5" x 16'5"
Area: 302 sq. ft
Counted as living area: Yes

Heated: Yes
Finished: Yes
Enclosed: Yes
Contiguous: Yes
Permitted: Yes
Wet space: No
Addition: No
Conversion: No

5009 W. Granite Creek Court, Las Vegas, Nevada, United States

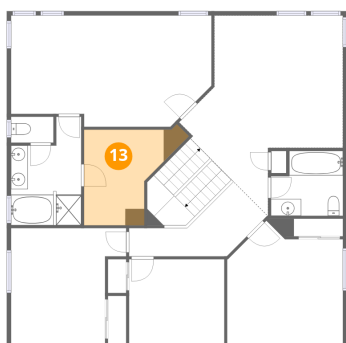
12 Floor 2 - Loft



Dimensions: 19'4" x 23'8"
Area: 456 sq. ft
Counted as living area: Yes

Heated: Yes
Finished: Yes
Enclosed: Yes
Contiguous: Yes
Permitted: Yes
Wet space: No
Addition: No
Conversion: No

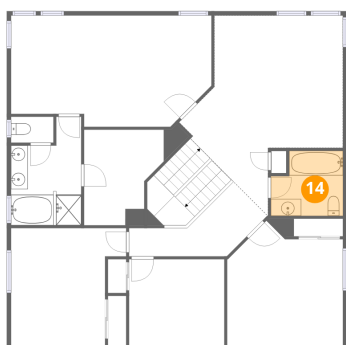
13 Floor 2 - W.I.C.



Dimensions: 9'5" x 11'3"
Area: 106 sq. ft
Counted as living area: Yes

Heated: Yes
Finished: Yes
Enclosed: Yes
Contiguous: Yes
Permitted: Yes
Wet space: No
Addition: No
Conversion: No

14 Floor 2 - Bath

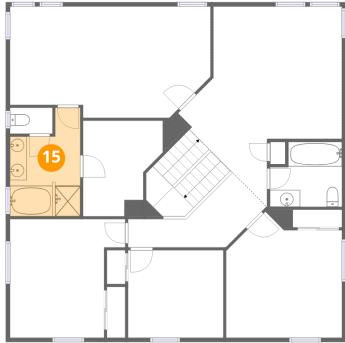


Dimensions: 8'6" x 7'8"
Area: 65 sq. ft
Counted as living area: Yes

Heated: Yes
Finished: Yes
Enclosed: Yes
Contiguous: Yes
Permitted: Yes
Wet space: Yes
Addition: No
Conversion: No



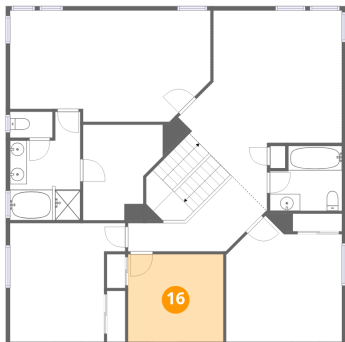
15 Floor 2 - Primary Bath



Dimensions: 8'4" x 12'9"
Area: 106 sq. ft
Counted as living area: Yes

Heated: Yes
Finished: Yes
Enclosed: Yes
Contiguous: Yes
Permitted: Yes
Wet space: Yes
Addition: No
Conversion: No

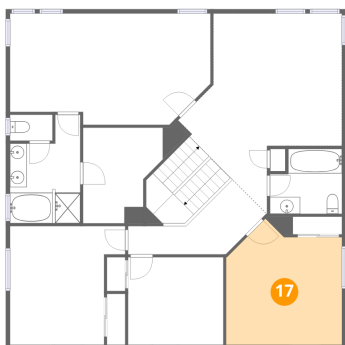
16 Floor 2 - Bedroom 2



Dimensions: 11'3" x 10'4"
Area: 116 sq. ft
Counted as living area: Yes

Heated: Yes
Finished: Yes
Enclosed: Yes
Contiguous: Yes
Permitted: Yes
Wet space: No
Addition: No
Conversion: No

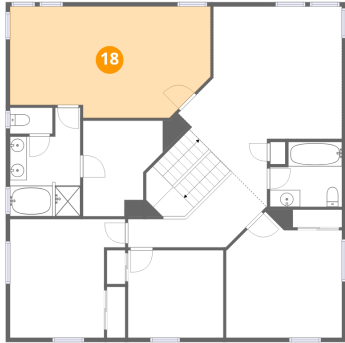
17 Floor 2 - Bedroom 3



Dimensions: 13'8" x 14'10"
Area: 203 sq. ft
Counted as living area: Yes

Heated: Yes
Finished: Yes
Enclosed: Yes
Contiguous: Yes
Permitted: Yes
Wet space: No
Addition: No
Conversion: No

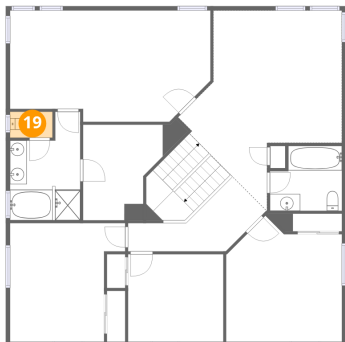
18 Floor 2 - Primary Bedroom



Dimensions: 23'8" x 13'2"
Area: 311 sq. ft
Counted as living area: Yes

Heated: Yes
Finished: Yes
Enclosed: Yes
Contiguous: Yes
Permitted: Yes
Wet space: No
Addition: No
Conversion: No

19 Floor 2 - Bath



Dimensions: 5'0" x 3'1"
Area: 15 sq. ft
Counted as living area: Yes

Heated: Yes
Finished: Yes
Enclosed: Yes
Contiguous: Yes
Permitted: Yes
Wet space: Yes
Addition: No
Conversion: No

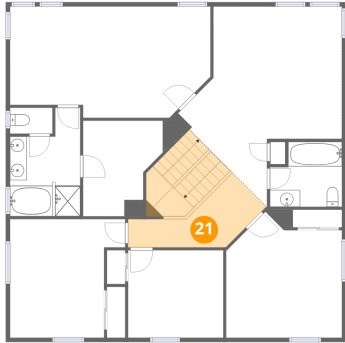
20 Floor 2 - Bedroom 1



Dimensions: 13'7" x 14'0"
Area: 191 sq. ft
Counted as living area: Yes

Heated: Yes
Finished: Yes
Enclosed: Yes
Contiguous: Yes
Permitted: Yes
Wet space: No
Addition: No
Conversion: No

21 Floor 2 - Hall



Dimensions: 16'3" x 8'8"
Area: 141 sq. ft
Counted as living area: Yes

Heated: Yes
Finished: Yes
Enclosed: Yes
Contiguous: Yes
Permitted: Yes
Wet space: No
Addition: No
Conversion: No