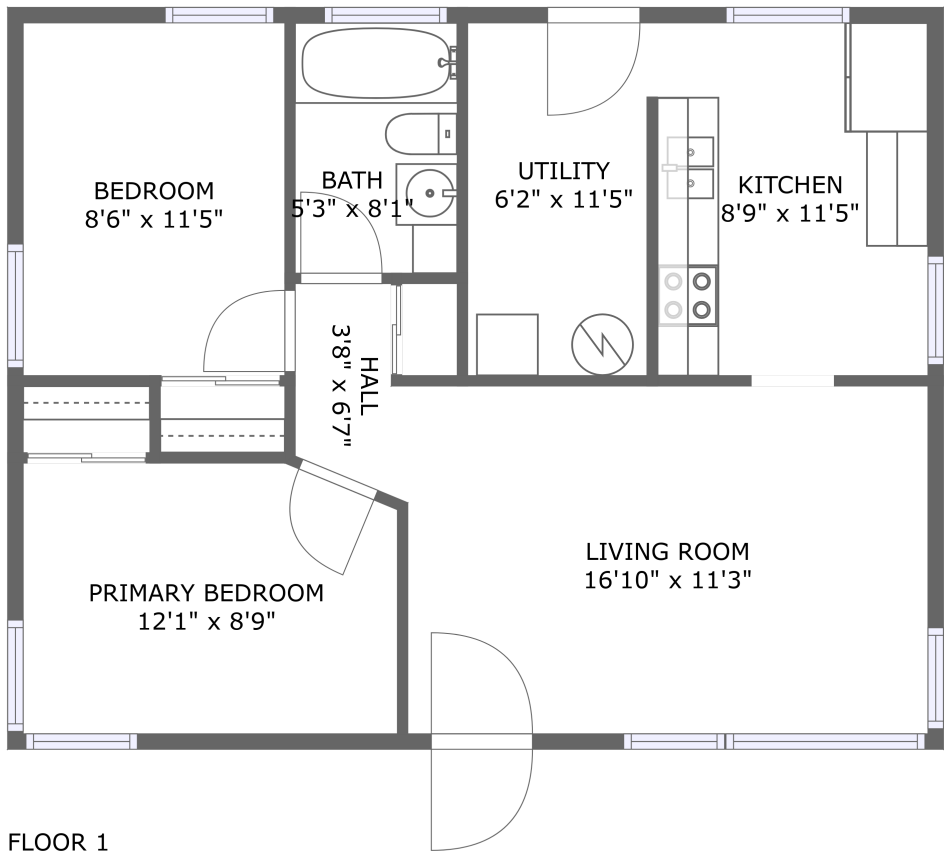


Home report

320 Sunset Drive, Shelbyville, Shelby County, Indiana, United States, 46176




Total Area: 726 sq. ft

Floor 1: 726 sq. ft

Excluded:

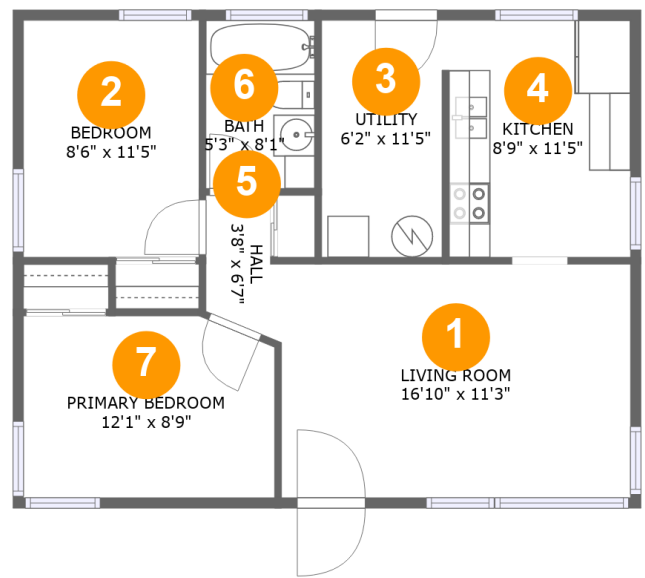
Property summary

 1 Floors

 2 Bedrooms

 1 Bathrooms

320 Sunset Drive, Shelbyville, Shelby County, Indiana, United States, 46176



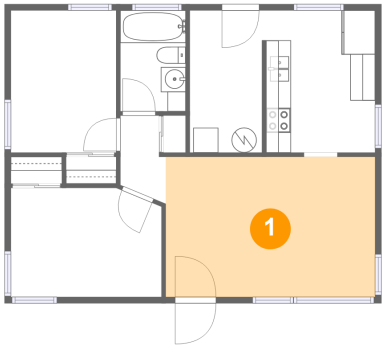
Room dimensions

Floor 1 Total:726sqft Excluded: 0sqft

#		Max Dimensions	sqft	Included
1	Living Room	16'10" x 11'3"	189 sq. ft	Yes
2	Bedroom	8'6" x 11'5"	97 sq. ft	Yes
3	Utility	6'2" x 11'5"	67 sq. ft	Yes
4	Kitchen	8'9" x 11'5"	100 sq. ft	Yes
5	Hall	3'8" x 6'7"	21 sq. ft	Yes
6	Bath	5'3" x 8'1"	42 sq. ft	Yes
7	Primary Bedroom	12'1" x 8'9"	103 sq. ft	Yes

320 Sunset Drive, Shelbyville, Shelby County, Indiana, United States, 46176

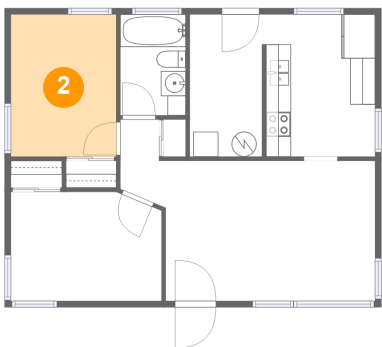
1 Floor 1 - Living Room



Max Dimensions: 16'10" x 11'3"
Calculated Area: 189 sq. ft
Included: Yes

Heated: Yes
Finished: Yes
Enclosed: Yes
Contiguous: Yes
Permitted: Yes
Wet space: No
Addition: No
Conversion: No

2 Floor 1 - Bedroom

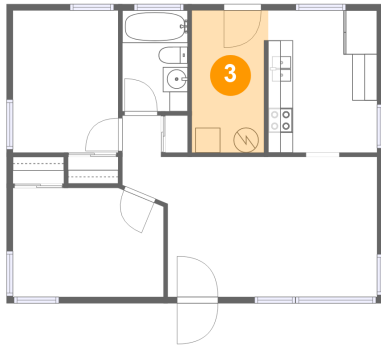


Max Dimensions: 8'6" x 11'5"
Calculated Area: 97 sq. ft
Included: Yes

Heated: Yes
Finished: Yes
Enclosed: Yes
Contiguous: Yes
Permitted: Yes
Wet space: No
Addition: No
Conversion: No

320 Sunset Drive, Shelbyville, Shelby County, Indiana, United States, 46176

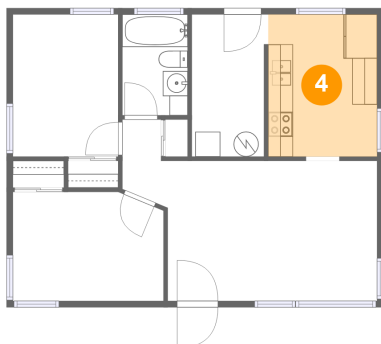
3 Floor 1 - Utility



Max Dimensions: 6'2" x 11'5"
Calculated Area: 67 sq. ft
Included: Yes

Heated: Yes
Finished: Yes
Enclosed: Yes
Contiguous: Yes
Permitted: Yes
Wet space: No
Addition: No
Conversion: No

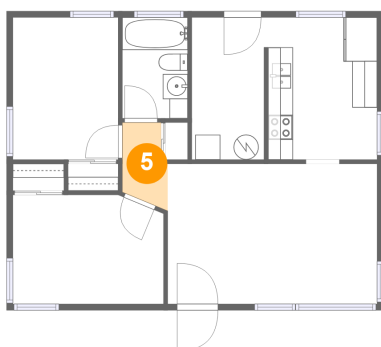
4 Floor 1 - Kitchen



Max Dimensions: 8'9" x 11'5"
Calculated Area: 100 sq. ft
Included: Yes

Heated: Yes
Finished: Yes
Enclosed: Yes
Contiguous: Yes
Permitted: Yes
Wet space: No
Addition: No
Conversion: No

5 Floor 1 - Hall

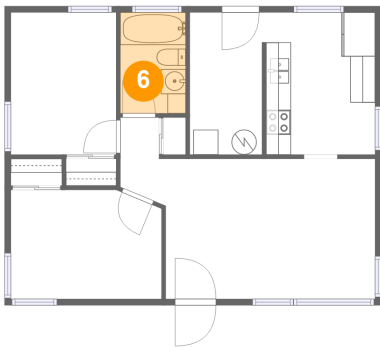


Max Dimensions: 3'8" x 6'7"
Calculated Area: 21 sq. ft
Included: Yes

Heated: Yes
Finished: Yes
Enclosed: Yes
Contiguous: Yes
Permitted: Yes
Wet space: No
Addition: No
Conversion: No

320 Sunset Drive, Shelbyville, Shelby County, Indiana, United States, 46176

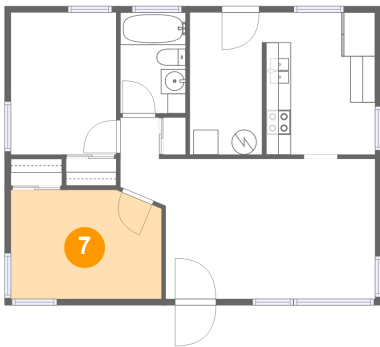
6 Floor 1 - Bath



Max Dimensions: 5'3" x 8'1"
Calculated Area: 42 sq. ft
Included: Yes

Heated: Yes
Finished: Yes
Enclosed: Yes
Contiguous: Yes
Permitted: Yes
Wet space: Yes
Addition: No
Conversion: No

7 Floor 1 - Primary Bedroom



Max Dimensions: 12'1" x 8'9"
Calculated Area: 103 sq. ft
Included: Yes

Heated: Yes
Finished: Yes
Enclosed: Yes
Contiguous: Yes
Permitted: Yes
Wet space: No
Addition: No
Conversion: No