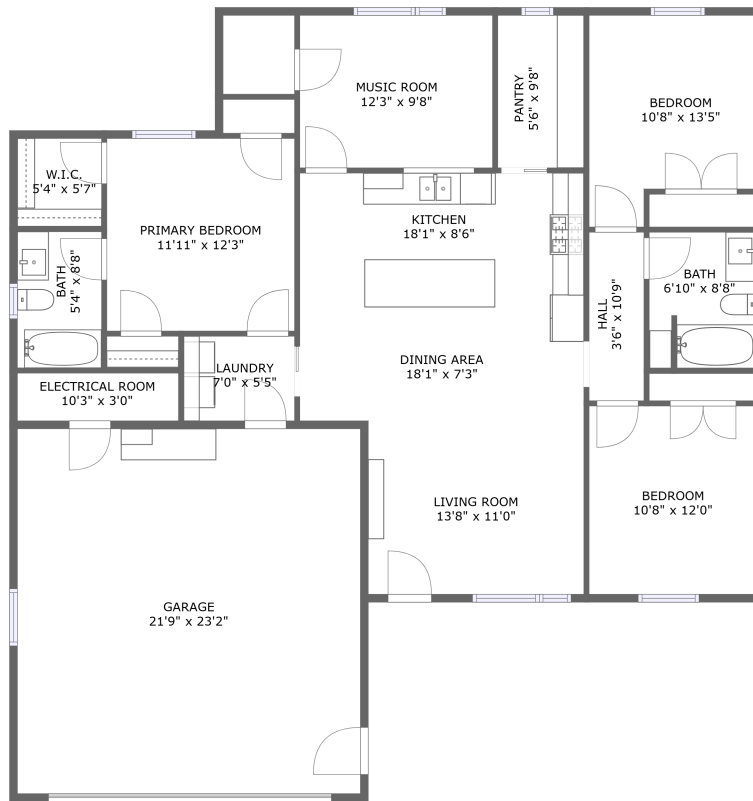



687 Teton Way, Whitewood, SD, US



FLOOR 1

Property summary

 **1** Garages

 **3** Bedrooms

 **2** Bathrooms

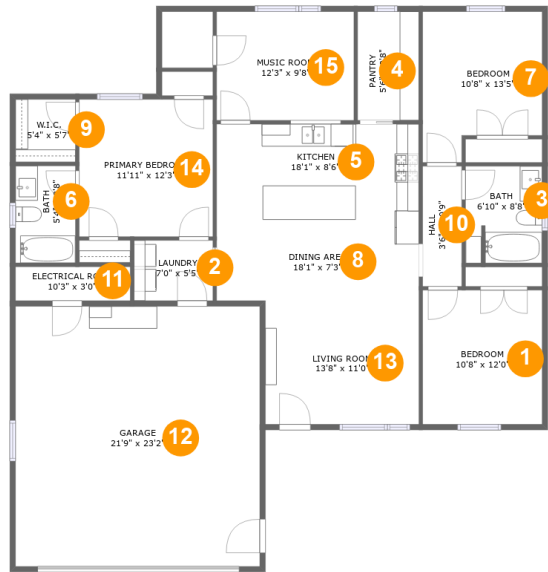
 **0** Half baths

 **1** Floors

 **1,427**
Gross living
area sqft

 **2,000**
Total sqft

687 Teton Way, Whitewood, SD, US



Room dimensions

Floor 1

Total sqft: 2000 Living area: 1427

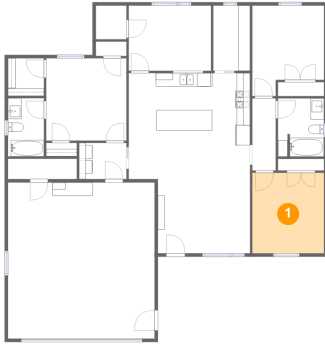
| # | | Dimensions | sqft | Counted as living area |
|----|-----------------|---------------|------------|------------------------|
| 1 | Bedroom | 10'8" x 12'0" | 128 sq. ft | Yes |
| 2 | Laundry | 7'0" x 5'5" | 38 sq. ft | Yes |
| 3 | Bath | 6'10" x 8'8" | 58 sq. ft | Yes |
| 4 | Pantry | 5'6" x 9'8" | 53 sq. ft | Yes |
| 5 | Kitchen | 18'1" x 8'6" | 155 sq. ft | Yes |
| 6 | Bath | 5'4" x 8'8" | 46 sq. ft | Yes |
| 7 | Bedroom | 10'8" x 13'5" | 126 sq. ft | Yes |
| 8 | Dining Area | 18'1" x 7'3" | 131 sq. ft | Yes |
| 9 | W.I.C. | 5'4" x 5'7" | 30 sq. ft | Yes |
| 10 | Hall | 3'6" x 10'9" | 37 sq. ft | Yes |
| 11 | Electrical Room | 10'3" x 3'0" | 31 sq. ft | No |

687 Teton Way,Whitewood,SD,US

| # | | Dimensions | sqft | Counted as living area |
|----|-----------------|----------------|------------|------------------------|
| 12 | Garage | 21'9" x 23'2" | 505 sq. ft | No |
| 13 | Living Room | 13'8" x 11'0" | 151 sq. ft | Yes |
| 14 | Primary Bedroom | 11'11" x 12'3" | 146 sq. ft | Yes |
| 15 | Music Room | 12'3" x 9'8" | 119 sq. ft | Yes |

687 Teton Way,Whitewood,SD,US

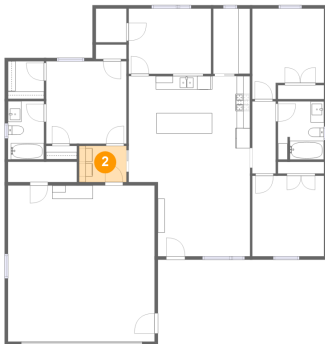
1 Floor 1 - Bedroom



Dimensions: 10'8" x 12'0"
Area: 128 sq. ft
Counted as living area: Yes

Heated: Yes
Finished: Yes
Enclosed: Yes
Contiguous: Yes
Permitted: Yes
Wet space: No
Addition: No
Conversion: No

2 Floor 1 - Laundry

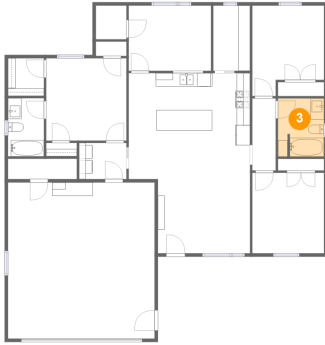


Dimensions: 7'0" x 5'5"
Area: 38 sq. ft
Counted as living area: Yes

Heated: Yes
Finished: Yes
Enclosed: Yes
Contiguous: Yes
Permitted: Yes
Wet space: No
Addition: No
Conversion: No

687 Teton Way, Whitewood, SD, US

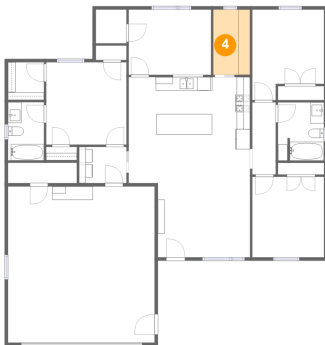
3 Floor 1 - Bath



Dimensions: 6'10" x 8'8"
Area: 58 sq. ft
Counted as living area: Yes

Heated: Yes
Finished: Yes
Enclosed: Yes
Contiguous: Yes
Permitted: Yes
Wet space: Yes
Addition: No
Conversion: No

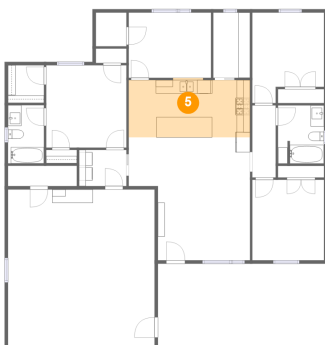
4 Floor 1 - Pantry



Dimensions: 5'6" x 9'8"
Area: 53 sq. ft
Counted as living area: Yes

Heated: Yes
Finished: Yes
Enclosed: Yes
Contiguous: Yes
Permitted: Yes
Wet space: No
Addition: No
Conversion: No

5 Floor 1 - Kitchen

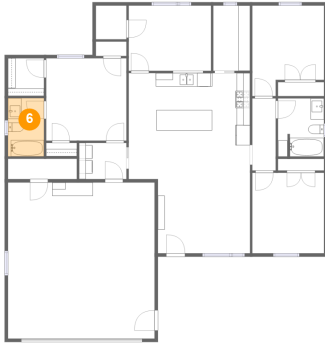


Dimensions: 18'1" x 8'6"
Area: 155 sq. ft
Counted as living area: Yes

Heated: Yes
Finished: Yes
Enclosed: Yes
Contiguous: Yes
Permitted: Yes
Wet space: No
Addition: No
Conversion: No

687 Teton Way, Whitewood, SD, US

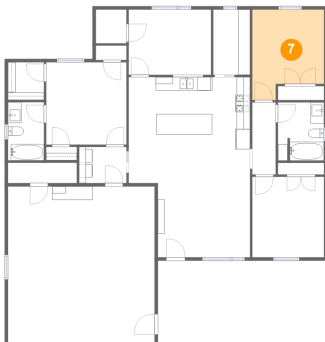
6 Floor 1 - Bath



Dimensions: 5'4" x 8'8"
Area: 46 sq. ft
Counted as living area: Yes

Heated: Yes
Finished: Yes
Enclosed: Yes
Contiguous: Yes
Permitted: Yes
Wet space: Yes
Addition: No
Conversion: No

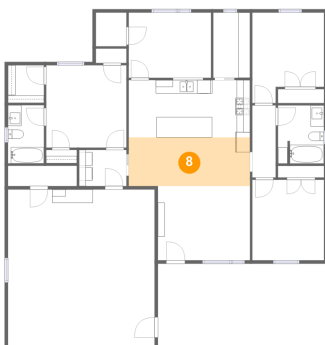
7 Floor 1 - Bedroom



Dimensions: 10'8" x 13'5"
Area: 126 sq. ft
Counted as living area: Yes

Heated: Yes
Finished: Yes
Enclosed: Yes
Contiguous: Yes
Permitted: Yes
Wet space: No
Addition: No
Conversion: No

8 Floor 1 - Dining Area

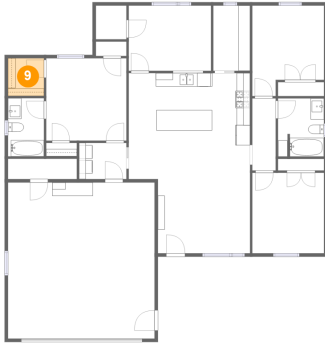


Dimensions: 18'1" x 7'3"
Area: 131 sq. ft
Counted as living area: Yes

Heated: Yes
Finished: Yes
Enclosed: Yes
Contiguous: Yes
Permitted: Yes
Wet space: No
Addition: No
Conversion: No

687 Teton Way, Whitewood, SD, US

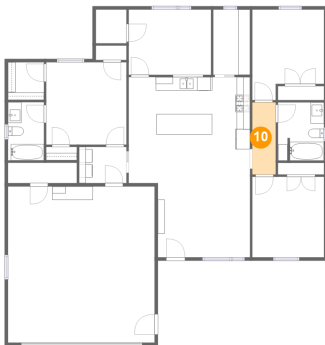
9 Floor 1 - W.I.C.



Dimensions: 5'4" x 5'7"
Area: 30 sq. ft
Counted as living area: Yes

Heated: Yes
Finished: Yes
Enclosed: Yes
Contiguous: Yes
Permitted: Yes
Wet space: No
Addition: No
Conversion: No

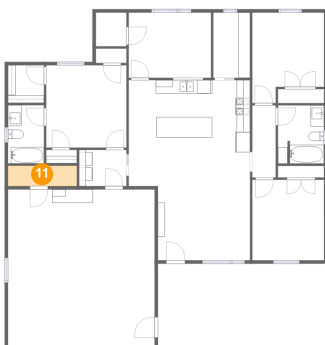
10 Floor 1 - Hall



Dimensions: 3'6" x 10'9"
Area: 37 sq. ft
Counted as living area: Yes

Heated: Yes
Finished: Yes
Enclosed: Yes
Contiguous: Yes
Permitted: Yes
Wet space: No
Addition: No
Conversion: No

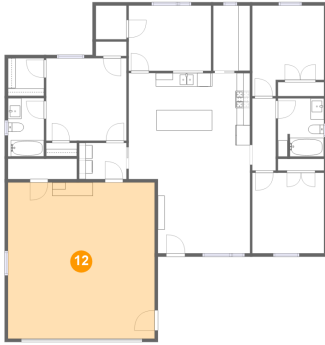
11 Floor 1 - Electrical Room



Dimensions: 10'3" x 3'0"
Area: 31 sq. ft
Counted as living area: No

Heated: No
Finished: No
Enclosed: Yes
Contiguous: Yes
Permitted: Yes
Wet space: No
Addition: No
Conversion: No

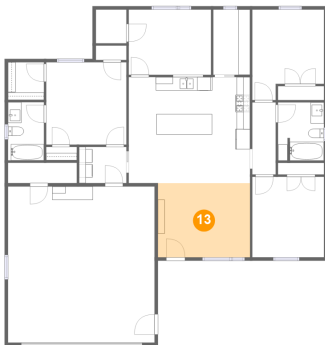
12 Floor 1 - Garage



Dimensions: 21'9" x 23'2"
Area: 505 sq. ft
Counted as living area: No

Heated: No
Finished: No
Enclosed: Yes
Contiguous: Yes
Permitted: Yes
Wet space: No
Addition: No
Conversion: No

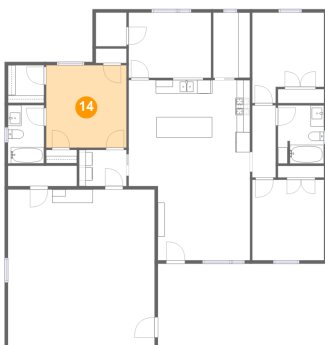
13 Floor 1 - Living Room



Dimensions: 13'8" x 11'0"
Area: 151 sq. ft
Counted as living area: Yes

Heated: Yes
Finished: Yes
Enclosed: Yes
Contiguous: Yes
Permitted: Yes
Wet space: No
Addition: No
Conversion: No

14 Floor 1 - Primary Bedroom

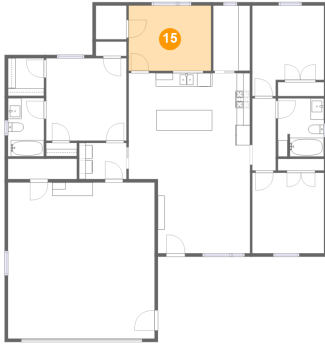


Dimensions: 11'11" x 12'3"
Area: 146 sq. ft
Counted as living area: Yes

Heated: Yes
Finished: Yes
Enclosed: Yes
Contiguous: Yes
Permitted: Yes
Wet space: No
Addition: No
Conversion: No

687 Teton Way, Whitewood, SD, US

15 Floor 1 - Music Room



Dimensions: 12'3" x 9'8"
Area: 119 sq. ft
Counted as living area: Yes

Heated: Yes
Finished: Yes
Enclosed: Yes
Contiguous: Yes
Permitted: Yes
Wet space: No
Addition: No
Conversion: No