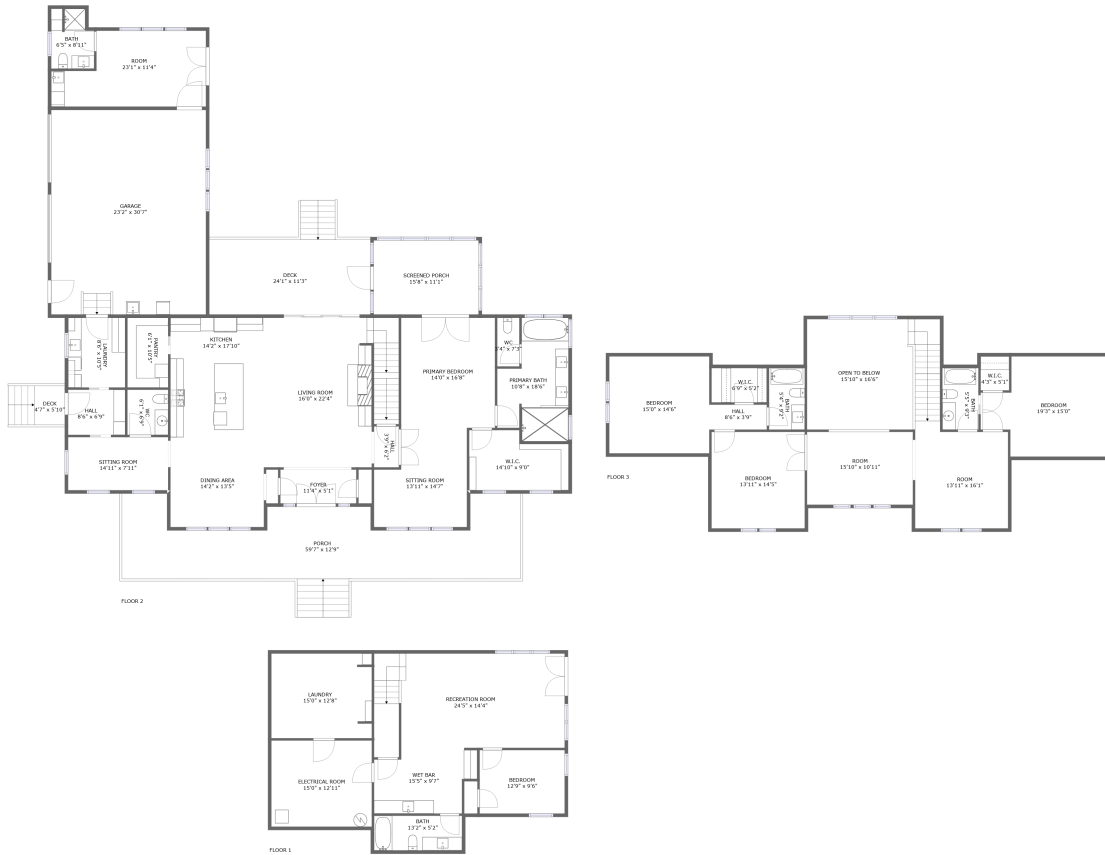


1897 Manakintown Ferry Road, Midlothian, Powhatan County, Virginia, United States, 23113



Property summary


 **1** Garages

 **5** Bedrooms

 **5** Bathrooms

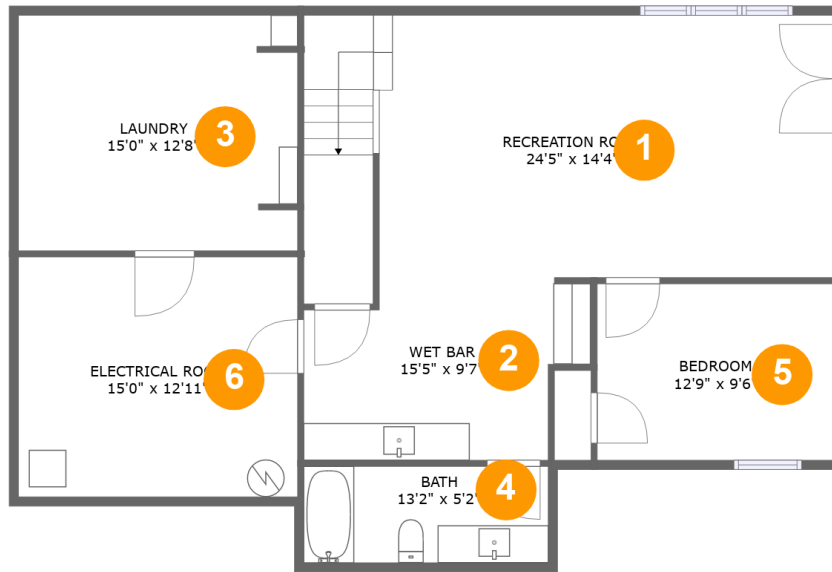
 **1** Half baths

 **3** Floors

 **4,483** Gross living area sqft

 **7,282** Total sqft

1897 Manakintown Ferry Road, Midlothian, Powhatan County, Virginia, United States, 23113



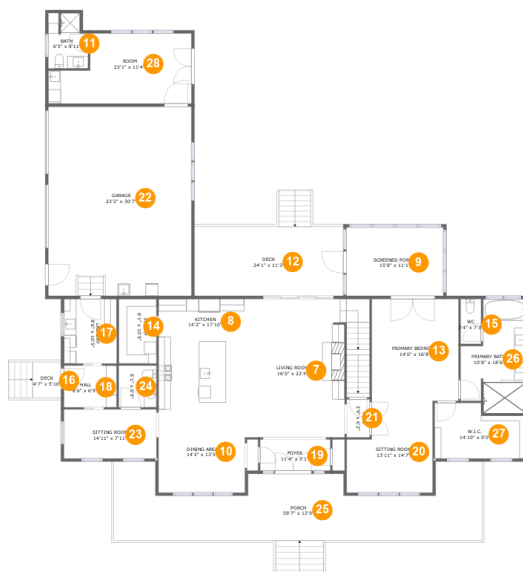
Room dimensions

Floor 1

Total sqft: 1225 Living area: 808

#		Dimensions	sqft	Counted as living area
1	Recreation Room	24'5" x 14'4"	407 sq. ft	Yes
2	Wet Bar	15'5" x 9'7"	130 sq. ft	Yes
3	Laundry	15'0" x 12'8"	189 sq. ft	No
4	Bath	13'2" x 5'2"	68 sq. ft	Yes
5	Bedroom	12'9" x 9'6"	121 sq. ft	Yes
6	Electrical Room	15'0" x 12'11"	194 sq. ft	No

1897 Manakintown Ferry Road, Midlothian, Powhatan County, Virginia, United States, 23113



Room dimensions

Floor 2

Total sqft: 4337 Living area: 2225

#		Dimensions	sqft	Counted as living area
7	Living Room	16'0" x 22'4"	417 sq. ft	Yes
8	Kitchen	14'2" x 17'10"	252 sq. ft	Yes
9	Screened Porch	15'8" x 11'1"	174 sq. ft	No
10	Dining Area	14'2" x 13'5"	189 sq. ft	Yes
11	Bath	6'5" x 8'11"	52 sq. ft	No
12	Deck	24'1" x 11'3"	271 sq. ft	No
13	Primary Bedroom	14'0" x 16'8"	233 sq. ft	Yes
14	Pantry	6'1" x 10'5"	64 sq. ft	Yes
15	WC	3'4" x 7'3"	24 sq. ft	Yes
16	Deck	4'7" x 5'10"	26 sq. ft	No
17	Laundry	8'6" x 10'5"	89 sq. ft	Yes

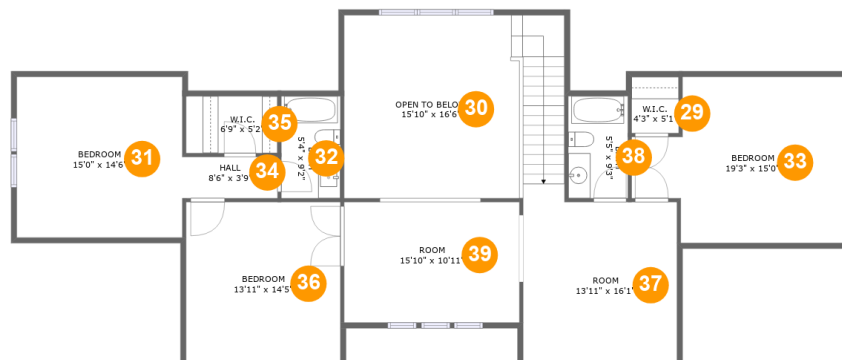
Scan captured on Wed, 26 Mar 2025 21:25:15 GMT

Information is calculated by Cubicasa technology deemed highly reliable but not guaranteed.

**1897 Manakintown Ferry Road, Midlothian, Powhatan
County, Virginia, United States, 23113**

#		Dimensions	sqft	Counted as living area
18	Hall	8'6" x 6'9"	58 sq. ft	Yes
19	Foyer	11'4" x 5'1"	57 sq. ft	Yes
20	Sitting Room	13'11" x 14'7"	179 sq. ft	Yes
21	Hall	3'9" x 6'2"	23 sq. ft	Yes
22	Garage	23'2" x 30'7"	707 sq. ft	No
23	Sitting Room	14'11" x 7'11"	119 sq. ft	Yes
24	WC	6'1" x 6'9"	41 sq. ft	Yes
25	Porch	59'7" x 12'9"	564 sq. ft	No
26	Primary Bath	10'8" x 18'6"	161 sq. ft	Yes
27	W.I.C.	14'10" x 9'0"	118 sq. ft	Yes
28	Room	23'1" x 11'4"	222 sq. ft	No

1897 Manakintown Ferry Road, Midlothian, Powhatan County, Virginia, United States, 23113



Room dimensions

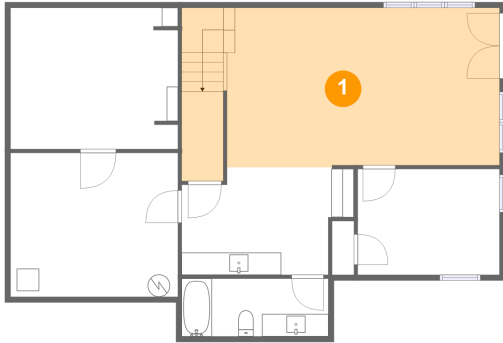
Floor 3

Total sqft: 1720 Living area: 1450

#		Dimensions	sqft	Counted as living area
29	W.I.C.	4'3" x 5'1"	22 sq. ft	Yes
30	Open To Below	15'10" x 16'6"	258 sq. ft	No
31	Bedroom	15'0" x 14'6"	217 sq. ft	Yes
32	Bath	5'4" x 9'2"	49 sq. ft	Yes
33	Bedroom	19'3" x 15'0"	246 sq. ft	Yes
34	Hall	8'6" x 3'9"	32 sq. ft	Yes
35	W.I.C.	6'9" x 5'2"	42 sq. ft	Yes
36	Bedroom	13'11" x 14'5"	201 sq. ft	Yes
37	Room	13'11" x 16'1"	272 sq. ft	Yes
38	Bath	5'5" x 9'3"	50 sq. ft	Yes
39	Room	15'10" x 10'11"	175 sq. ft	Yes

1897 Manakintown Ferry Road, Midlothian, Powhatan County, Virginia, United States, 23113

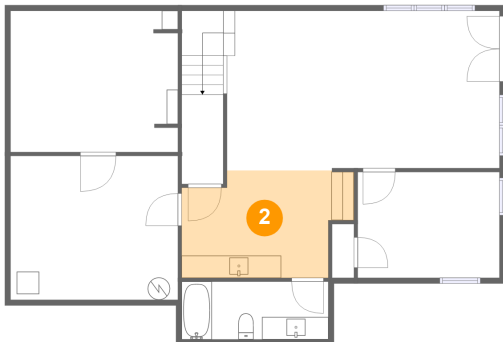
1 Floor 1 - Recreation Room



Dimensions: 24'5" x 14'4"
Area: 407 sq. ft
Counted as living area: Yes

Heated: Yes
Finished: Yes
Enclosed: Yes
Contiguous: Yes
Permitted: Yes
Wet space: No
Addition: No
Conversion: No

2 Floor 1 - Wet Bar

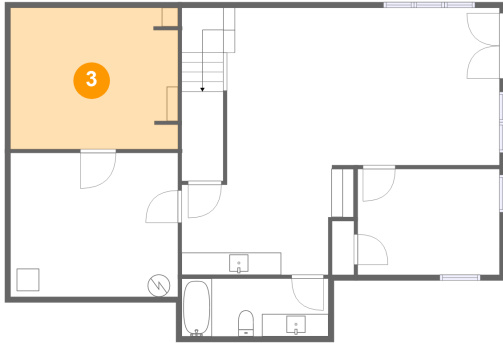


Dimensions: 15'5" x 9'7"
Area: 130 sq. ft
Counted as living area: Yes

Heated: Yes
Finished: Yes
Enclosed: Yes
Contiguous: Yes
Permitted: Yes
Wet space: No
Addition: No
Conversion: No

1897 Manakintown Ferry Road, Midlothian, Powhatan County, Virginia, United States, 23113

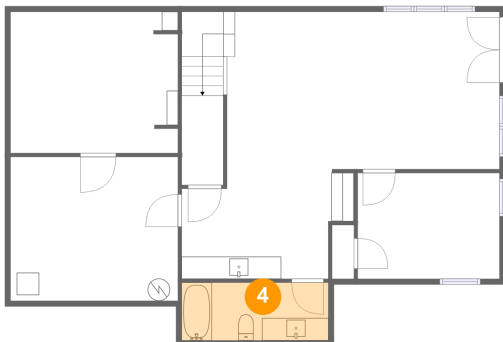
3 Floor 1 - Laundry



Dimensions: 15'0" x 12'8"
Area: 189 sq. ft
Counted as living area: No

Heated: Yes
Finished: Yes
Enclosed: Yes
Contiguous: No
Permitted: Yes
Wet space: No
Addition: No
Conversion: No

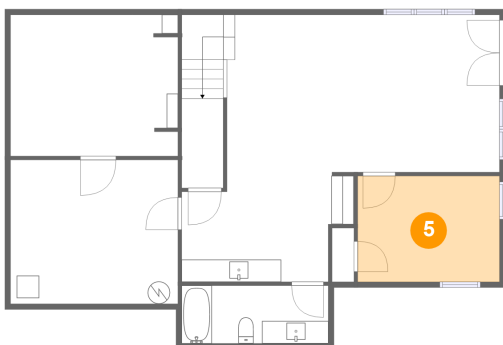
4 Floor 1 - Bath



Dimensions: 13'2" x 5'2"
Area: 68 sq. ft
Counted as living area: Yes

Heated: Yes
Finished: Yes
Enclosed: Yes
Contiguous: Yes
Permitted: Yes
Wet space: Yes
Addition: No
Conversion: No

5 Floor 1 - Bedroom

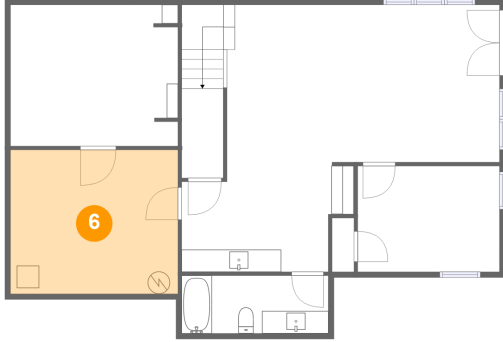


Dimensions: 12'9" x 9'6"
Area: 121 sq. ft
Counted as living area: Yes

Heated: Yes
Finished: Yes
Enclosed: Yes
Contiguous: Yes
Permitted: Yes
Wet space: No
Addition: No
Conversion: No

1897 Manakintown Ferry Road, Midlothian, Powhatan County, Virginia, United States, 23113

6 Floor 1 - Electrical Room



Dimensions: 15'0" x 12'11"
Area: 194 sq. ft
Counted as living area: No

Heated: No
Finished: No
Enclosed: Yes
Contiguous: Yes
Permitted: Yes
Wet space: No
Addition: No
Conversion: No

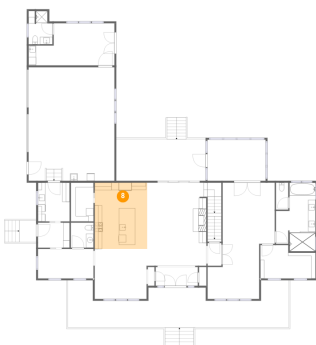
7 Floor 2 - Living Room



Dimensions: 16'0" x 22'4"
Area: 417 sq. ft
Counted as living area: Yes

Heated: Yes
Finished: Yes
Enclosed: Yes
Contiguous: Yes
Permitted: Yes
Wet space: No
Addition: No
Conversion: No

8 Floor 2 - Kitchen



Dimensions: 14'2" x 17'10"
Area: 252 sq. ft
Counted as living area: Yes

Heated: Yes
Finished: Yes
Enclosed: Yes
Contiguous: Yes
Permitted: Yes
Wet space: No
Addition: No
Conversion: No

1897 Manakintown Ferry Road, Midlothian, Powhatan County, Virginia, United States, 23113

9 Floor 2 - Screened Porch



Dimensions: 15'8" x 11'1"
Area: 174 sq. ft
Counted as living area: No

Heated: No
Finished: Yes
Enclosed: No
Contiguous: Yes
Permitted: Yes
Wet space: No
Addition: No
Conversion: No

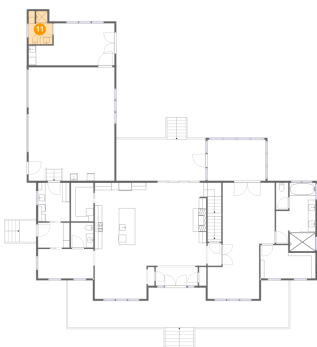
10 Floor 2 - Dining Area



Dimensions: 14'2" x 13'5"
Area: 189 sq. ft
Counted as living area: Yes

Heated: Yes
Finished: Yes
Enclosed: Yes
Contiguous: Yes
Permitted: Yes
Wet space: No
Addition: No
Conversion: No

11 Floor 2 - Bath



Dimensions: 6'5" x 8'11"
Area: 52 sq. ft
Counted as living area: No

Heated: Yes
Finished: Yes
Enclosed: Yes
Contiguous: No
Permitted: Yes
Wet space: Yes
Addition: No
Conversion: No

1897 Manakintown Ferry Road, Midlothian, Powhatan County, Virginia, United States, 23113

12 Floor 2 - Deck



Dimensions: 24'1" x 11'3"
Area: 271 sq. ft
Counted as living area: No

Heated: No
Finished: Yes
Enclosed: No
Contiguous: Yes
Permitted: Yes
Wet space: No
Addition: No
Conversion: No

13 Floor 2 - Primary Bedroom



Dimensions: 14'0" x 16'8"
Area: 233 sq. ft
Counted as living area: Yes

Heated: Yes
Finished: Yes
Enclosed: Yes
Contiguous: Yes
Permitted: Yes
Wet space: No
Addition: No
Conversion: No

14 Floor 2 - Pantry

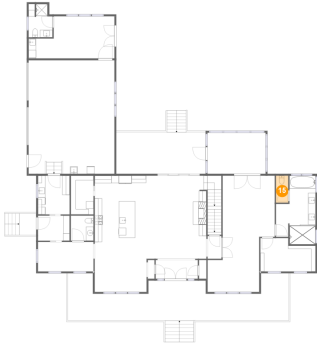


Dimensions: 6'1" x 10'5"
Area: 64 sq. ft
Counted as living area: Yes

Heated: Yes
Finished: Yes
Enclosed: Yes
Contiguous: Yes
Permitted: Yes
Wet space: No
Addition: No
Conversion: No

1897 Manakintown Ferry Road, Midlothian, Powhatan County, Virginia, United States, 23113

15 Floor 2 - WC



Dimensions: 3'4" x 7'3"
Area: 24 sq. ft
Counted as living area: Yes

Heated: Yes
Finished: Yes
Enclosed: Yes
Contiguous: Yes
Permitted: Yes
Wet space: Yes
Addition: No
Conversion: No

16 Floor 2 - Deck



Dimensions: 4'7" x 5'10"
Area: 26 sq. ft
Counted as living area: No

Heated: No
Finished: Yes
Enclosed: No
Contiguous: Yes
Permitted: Yes
Wet space: No
Addition: No
Conversion: No

17 Floor 2 - Laundry



Dimensions: 8'6" x 10'5"
Area: 89 sq. ft
Counted as living area: Yes

Heated: Yes
Finished: Yes
Enclosed: Yes
Contiguous: Yes
Permitted: Yes
Wet space: No
Addition: No
Conversion: No

1897 Manakintown Ferry Road, Midlothian, Powhatan County, Virginia, United States, 23113

18 Floor 2 - Hall



Dimensions: 8'6" x 6'9"
Area: 58 sq. ft
Counted as living area: Yes

Heated: Yes
Finished: Yes
Enclosed: Yes
Contiguous: Yes
Permitted: Yes
Wet space: No
Addition: No
Conversion: No

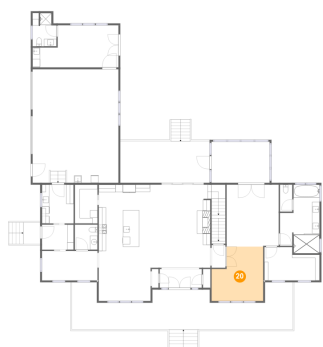
19 Floor 2 - Foyer



Dimensions: 11'4" x 5'1"
Area: 57 sq. ft
Counted as living area: Yes

Heated: Yes
Finished: Yes
Enclosed: Yes
Contiguous: Yes
Permitted: Yes
Wet space: No
Addition: No
Conversion: No

20 Floor 2 - Sitting Room



Dimensions: 13'11" x 14'7"
Area: 179 sq. ft
Counted as living area: Yes

Heated: Yes
Finished: Yes
Enclosed: Yes
Contiguous: Yes
Permitted: Yes
Wet space: No
Addition: No
Conversion: No

1897 Manakintown Ferry Road, Midlothian, Powhatan County, Virginia, United States, 23113

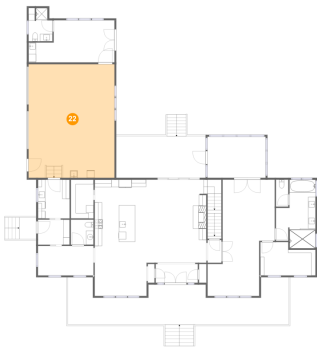
21 Floor 2 - Hall



Dimensions: 3'9" x 6'2"
Area: 23 sq. ft
Counted as living area: Yes

Heated: Yes
Finished: Yes
Enclosed: Yes
Contiguous: Yes
Permitted: Yes
Wet space: No
Addition: No
Conversion: No

22 Floor 2 - Garage



Dimensions: 23'2" x 30'7"
Area: 707 sq. ft
Counted as living area: No

Heated: No
Finished: No
Enclosed: Yes
Contiguous: Yes
Permitted: Yes
Wet space: No
Addition: No
Conversion: No

23 Floor 2 - Sitting Room



Dimensions: 14'11" x 7'11"
Area: 119 sq. ft
Counted as living area: Yes

Heated: Yes
Finished: Yes
Enclosed: Yes
Contiguous: Yes
Permitted: Yes
Wet space: No
Addition: No
Conversion: No

1897 Manakintown Ferry Road, Midlothian, Powhatan County, Virginia, United States, 23113

24 Floor 2 - WC



Dimensions: 6'1" x 6'9"
Area: 41 sq. ft
Counted as living area: Yes

Heated: Yes
Finished: Yes
Enclosed: Yes
Contiguous: Yes
Permitted: Yes
Wet space: Yes
Addition: No
Conversion: No

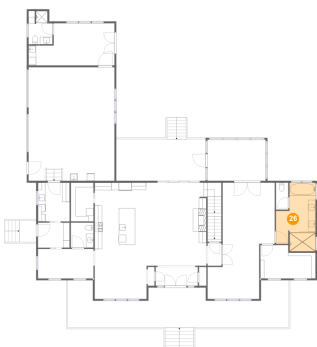
25 Floor 2 - Porch



Dimensions: 59'7" x 12'9"
Area: 564 sq. ft
Counted as living area: No

Heated: No
Finished: Yes
Enclosed: No
Contiguous: Yes
Permitted: Yes
Wet space: No
Addition: No
Conversion: No

26 Floor 2 - Primary Bath

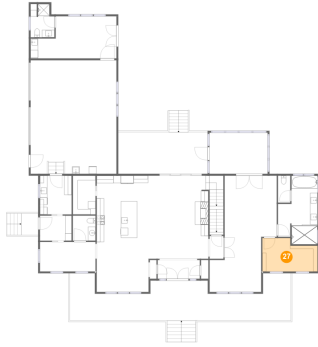


Dimensions: 10'8" x 18'6"
Area: 161 sq. ft
Counted as living area: Yes

Heated: Yes
Finished: Yes
Enclosed: Yes
Contiguous: Yes
Permitted: Yes
Wet space: Yes
Addition: No
Conversion: No

1897 Manakintown Ferry Road, Midlothian, Powhatan County, Virginia, United States, 23113

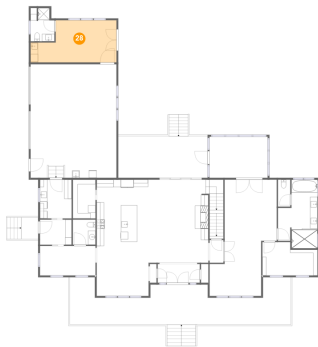
27 Floor 2 - W.I.C.



Dimensions: 14'10" x 9'0"
Area: 118 sq. ft
Counted as living area: Yes

Heated: Yes
Finished: Yes
Enclosed: Yes
Contiguous: Yes
Permitted: Yes
Wet space: No
Addition: No
Conversion: No

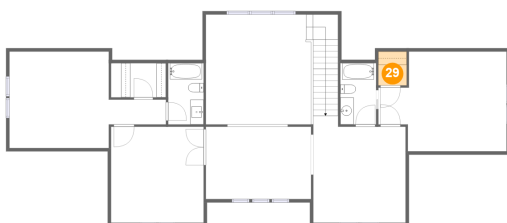
28 Floor 2 - Room



Dimensions: 23'1" x 11'4"
Area: 222 sq. ft
Counted as living area: No

Heated: Yes
Finished: Yes
Enclosed: Yes
Contiguous: No
Permitted: Yes
Wet space: No
Addition: No
Conversion: No

29 Floor 3 - W.I.C.

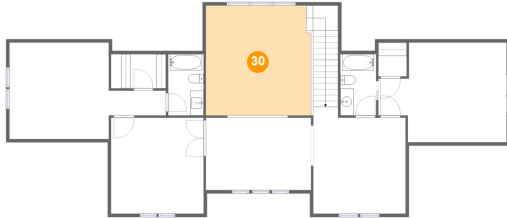


Dimensions: 4'3" x 5'1"
Area: 22 sq. ft
Counted as living area: Yes

Heated: Yes
Finished: Yes
Enclosed: Yes
Contiguous: Yes
Permitted: Yes
Wet space: No
Addition: No
Conversion: No

1897 Manakintown Ferry Road, Midlothian, Powhatan County, Virginia, United States, 23113

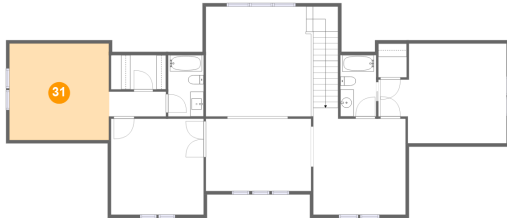
30 Floor 3 - Open To Below



Dimensions: 15'10" x 16'6"
Area: 258 sq. ft
Counted as living area: No

Heated: No
Finished: No
Enclosed: No
Contiguous: Yes
Permitted: No
Wet space: No
Addition: No
Conversion: No

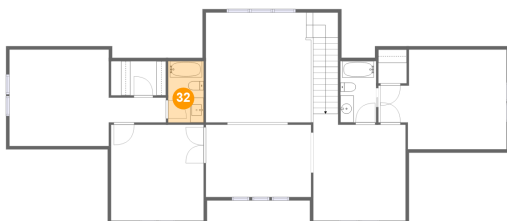
31 Floor 3 - Bedroom



Dimensions: 15'0" x 14'6"
Area: 217 sq. ft
Counted as living area: Yes

Heated: Yes
Finished: Yes
Enclosed: Yes
Contiguous: Yes
Permitted: Yes
Wet space: No
Addition: No
Conversion: No

32 Floor 3 - Bath

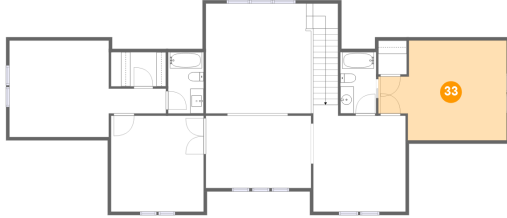


Dimensions: 5'4" x 9'2"
Area: 49 sq. ft
Counted as living area: Yes

Heated: Yes
Finished: Yes
Enclosed: Yes
Contiguous: Yes
Permitted: Yes
Wet space: Yes
Addition: No
Conversion: No

1897 Manakintown Ferry Road, Midlothian, Powhatan County, Virginia, United States, 23113

33 Floor 3 - Bedroom



Dimensions: 19'3" x 15'0"
Area: 246 sq. ft
Counted as living area: Yes

Heated: Yes
Finished: Yes
Enclosed: Yes
Contiguous: Yes
Permitted: Yes
Wet space: No
Addition: No
Conversion: No

34 Floor 3 - Hall



Dimensions: 8'6" x 3'9"
Area: 32 sq. ft
Counted as living area: Yes

Heated: Yes
Finished: Yes
Enclosed: Yes
Contiguous: Yes
Permitted: Yes
Wet space: No
Addition: No
Conversion: No

35 Floor 3 - W.I.C.



Dimensions: 6'9" x 5'2"
Area: 42 sq. ft
Counted as living area: Yes

Heated: Yes
Finished: Yes
Enclosed: Yes
Contiguous: Yes
Permitted: Yes
Wet space: No
Addition: No
Conversion: No

1897 Manakintown Ferry Road, Midlothian, Powhatan County, Virginia, United States, 23113

36 Floor 3 - Bedroom



Dimensions: 13'11" x 14'5"
Area: 201 sq. ft
Counted as living area: Yes

Heated: Yes
Finished: Yes
Enclosed: Yes
Contiguous: Yes
Permitted: Yes
Wet space: No
Addition: No
Conversion: No

37 Floor 3 - Room



Dimensions: 13'11" x 16'1"
Area: 272 sq. ft
Counted as living area: Yes

Heated: Yes
Finished: Yes
Enclosed: Yes
Contiguous: Yes
Permitted: Yes
Wet space: No
Addition: No
Conversion: No

38 Floor 3 - Bath

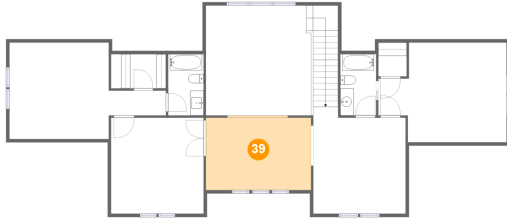


Dimensions: 5'5" x 9'3"
Area: 50 sq. ft
Counted as living area: Yes

Heated: Yes
Finished: Yes
Enclosed: Yes
Contiguous: Yes
Permitted: Yes
Wet space: Yes
Addition: No
Conversion: No

1897 Manakintown Ferry Road, Midlothian, Powhatan County, Virginia, United States, 23113

39 Floor 3 - Room



Dimensions: 15'10" x 10'11"
Area: 175 sq. ft
Counted as living area: Yes

Heated: Yes
Finished: Yes
Enclosed: Yes
Contiguous: Yes
Permitted: Yes
Wet space: No
Addition: No
Conversion: No