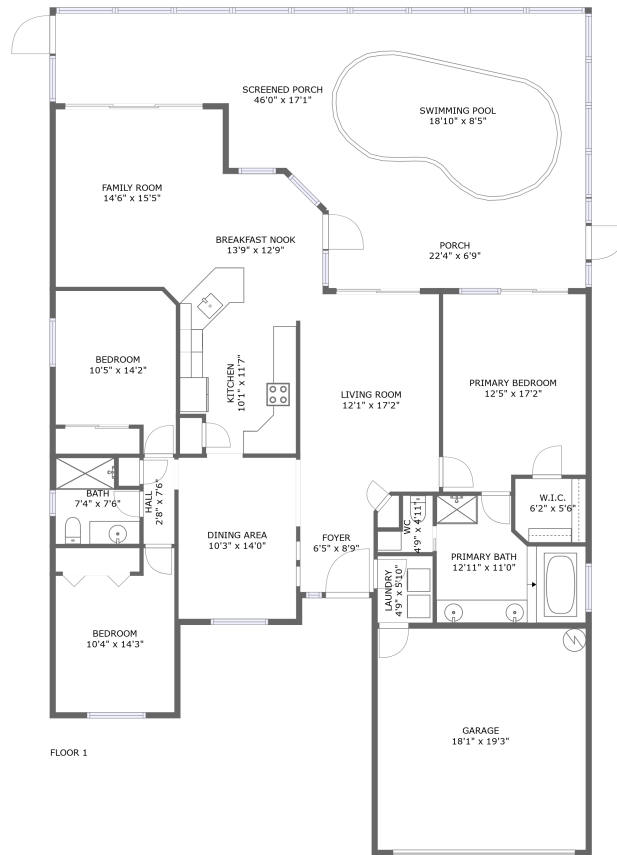


3128 Jodi Lane, Lake Shores Estates, Palm Harbor, Pinellas County, Florida, United States,



Property Summary



1 floors



3 bedrooms



2 bathrooms



2,813 total sqft

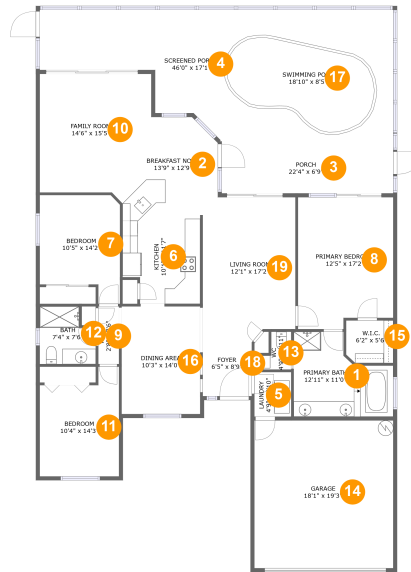


1 garages



1,790 Gross Living Area sqft

3128 Jodi Lane, Lake Shores Estates, Palm Harbor, Pinellas County, Florida, United States,



Room Dimensions

Floor 1

Total sqft: 2813

Living area: 1790

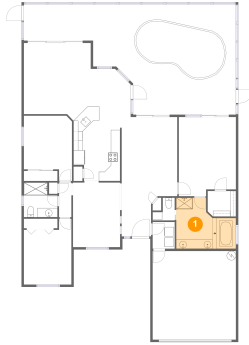
#	Room name	Dimensions	Area (sqft)	Counted as Living Area
1	Primary Bath	12'11" x 11'0"	115 sq. ft	Yes
2	Breakfast Nook	13'9" x 12'9"	140 sq. ft	Yes
3	Porch	22'4" x 6'9"	151 sq. ft	No
4	Screened Porch	46'0" x 17'1"	623 sq. ft	No
5	Laundry	4'9" x 5'10"	28 sq. ft	Yes
6	Kitchen	10'1" x 11'7"	109 sq. ft	Yes
7	Bedroom	10'5" x 14'2"	128 sq. ft	Yes
8	Primary Bedroom	12'5" x 17'2"	203 sq. ft	Yes
9	Hall	2'8" x 7'6"	20 sq. ft	Yes
10	Family Room	14'6" x 15'5"	199 sq. ft	Yes
11	Bedroom	10'4" x 14'3"	129 sq. ft	Yes

3128 Jodi Lane, Lake Shores Estates, Palm Harbor, Pinellas County, Florida, United States,

#	Room name	Dimensions	Area (sqft)	Counted as Living Area
12	Bath	7'4" x 7'6"	49 sq. ft	Yes
13	Wc	4'9" x 4'11"	17 sq. ft	Yes
14	Garage	18'1" x 19'3"	347 sq. ft	No
15	W.i.c.	6'2" x 5'6"	33 sq. ft	Yes
16	Dining Area	10'3" x 14'0"	145 sq. ft	Yes
17	Swimming Pool	18'10" x 8'5"	163 sq. ft	Yes
18	Foyer	6'5" x 8'9"	57 sq. ft	Yes
19	Living Room	12'1" x 17'2"	205 sq. ft	Yes

3128 Jodi Lane, Lake Shores Estates, Palm Harbor, Pinellas County, Florida, United States,

1 Floor 1 - Primary Bath



Dimensions: 12'11" x 11'0"
Area: 115 sq. ft
Counted as Living Area:
Yes

Heated: Yes
Finished: Yes
Enclosed: Yes
Contiguous:
Yes
Permitted: Yes
Wet Space: Yes
Addition: No
Conversion: No

2 Floor 1 - Breakfast Nook

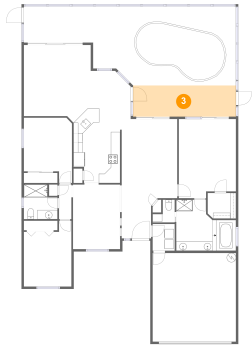


Dimensions: 13'9" x 12'9"
Area: 140 sq. ft
Counted as Living Area:
Yes

Heated: Yes
Finished: Yes
Enclosed: Yes
Contiguous:
Yes
Permitted: Yes
Wet Space: No
Addition: No
Conversion: No

3128 Jodi Lane, Lake Shores Estates, Palm Harbor, Pinellas County, Florida, United States,

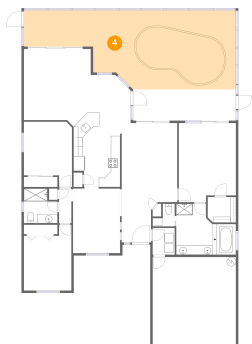
3 Floor 1 - Porch



Dimensions: 22'4" x 6'9"
Area: 151 sq. ft
Counted as Living Area: No

Heated: No
Finished: Yes
Enclosed: No
Contiguous: Yes
Permitted: Yes
Wet Space: No
Addition: No
Conversion: No

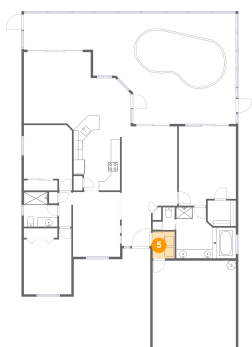
4 Floor 1 - Screened Porch



Dimensions: 46'0" x 17'1"
Area: 623 sq. ft
Counted as Living Area: No

Heated: No
Finished: Yes
Enclosed: No
Contiguous: Yes
Permitted: Yes
Wet Space: No
Addition: No
Conversion: No

5 Floor 1 - Laundry

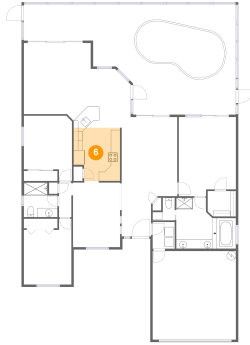


Dimensions: 4'9" x 5'10"
Area: 28 sq. ft
Counted as Living Area: Yes

Heated: Yes
Finished: Yes
Enclosed: Yes
Contiguous: Yes
Permitted: Yes
Wet Space: No
Addition: No
Conversion: No

3128 Jodi Lane, Lake Shores Estates, Palm Harbor, Pinellas County, Florida, United States,

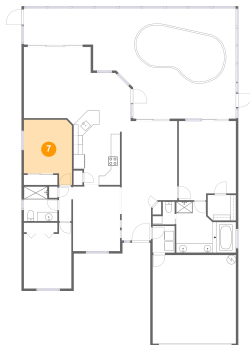
6 Floor 1 - Kitchen



Dimensions: 10'1" x 11'7"
Area: 109 sq. ft
Counted as Living Area:
Yes

Heated: Yes
Finished: Yes
Enclosed: Yes
Contiguous:
Yes
Permitted: Yes
Wet Space: No
Addition: No
Conversion: No

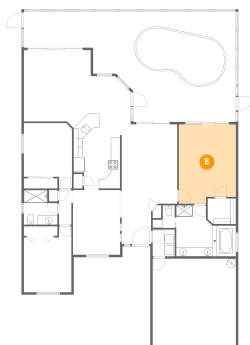
7 Floor 1 - Bedroom



Dimensions: 10'5" x 14'2"
Area: 128 sq. ft
Counted as Living Area:
Yes

Heated: Yes
Finished: Yes
Enclosed: Yes
Contiguous:
Yes
Permitted: Yes
Wet Space: No
Addition: No
Conversion: No

8 Floor 1 - Primary Bedroom



Dimensions: 12'5" x 17'2"
Area: 203 sq. ft
Counted as Living Area:
Yes

Heated: Yes
Finished: Yes
Enclosed: Yes
Contiguous:
Yes
Permitted: Yes
Wet Space: No
Addition: No
Conversion: No

3128 Jodi Lane, Lake Shores Estates, Palm Harbor, Pinellas County, Florida, United States,

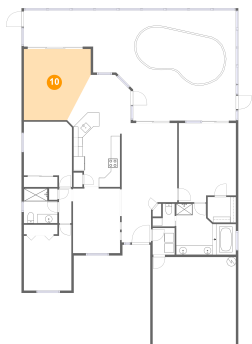
9 Floor 1 - Hall



Dimensions: 2'8" x 7'6"
Area: 20 sq. ft
Counted as Living Area:
Yes

Heated: Yes
Finished: Yes
Enclosed: Yes
Contiguous:
Yes
Permitted: Yes
Wet Space: No
Addition: No
Conversion: No

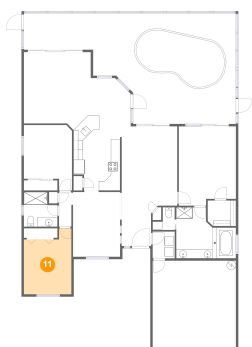
10 Floor 1 - Family Room



Dimensions: 14'6" x 15'5"
Area: 199 sq. ft
Counted as Living Area:
Yes

Heated: Yes
Finished: Yes
Enclosed: Yes
Contiguous:
Yes
Permitted: Yes
Wet Space: No
Addition: No
Conversion: No

11 Floor 1 - Bedroom

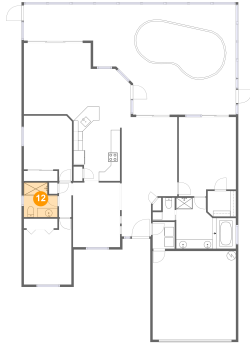


Dimensions: 10'4" x 14'3"
Area: 129 sq. ft
Counted as Living Area:
Yes

Heated: Yes
Finished: Yes
Enclosed: Yes
Contiguous:
Yes
Permitted: Yes
Wet Space: No
Addition: No
Conversion: No

3128 Jodi Lane, Lake Shores Estates, Palm Harbor, Pinellas County, Florida, United States,

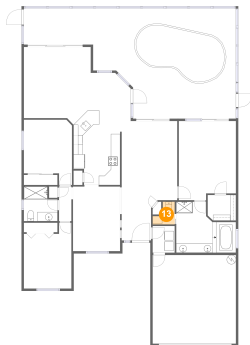
12 Floor 1 - Bath



Dimensions: 7'4" x 7'6"
Area: 49 sq. ft
Counted as Living Area:
Yes

Heated: Yes
Finished: Yes
Enclosed: Yes
Contiguous:
Yes
Permitted: Yes
Wet Space: Yes
Addition: No
Conversion: No

13 Floor 1 - Wc



Dimensions: 4'9" x 4'11"
Area: 17 sq. ft
Counted as Living Area:
Yes

Heated: Yes
Finished: Yes
Enclosed: Yes
Contiguous:
Yes
Permitted: Yes
Wet Space: Yes
Addition: No
Conversion: No

14 Floor 1 - Garage

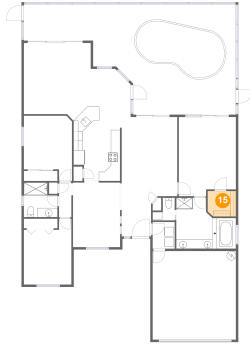


Dimensions: 18'1" x 19'3"
Area: 347 sq. ft
Counted as Living Area: No

Heated: No
Finished: No
Enclosed: Yes
Contiguous: Yes
Permitted: Yes
Wet Space: No
Addition: No
Conversion: No

3128 Jodi Lane, Lake Shores Estates, Palm Harbor, Pinellas County, Florida, United States,

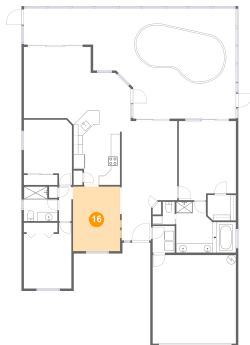
15 Floor 1 - W.i.c.



Dimensions: 6'2" x 5'6"
Area: 33 sq. ft
Counted as Living Area:
Yes

Heated: Yes
Finished: Yes
Enclosed: Yes
Contiguous:
Yes
Permitted: Yes
Wet Space: No
Addition: No
Conversion: No

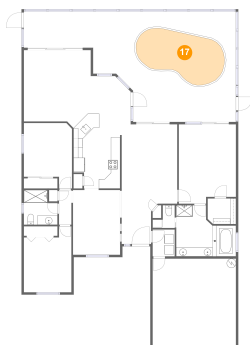
16 Floor 1 - Dining Area



Dimensions: 10'3" x 14'0"
Area: 145 sq. ft
Counted as Living Area:
Yes

Heated: Yes
Finished: Yes
Enclosed: Yes
Contiguous:
Yes
Permitted: Yes
Wet Space: No
Addition: No
Conversion: No

17 Floor 1 - Swimming Pool

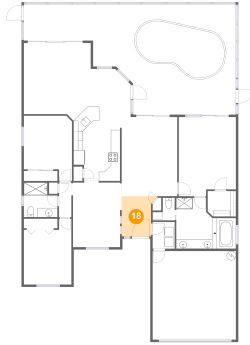


Dimensions: 18'10" x 8'5"
Area: 163 sq. ft
Counted as Living Area:
Yes

Heated: No
Finished: No
Enclosed: No
Contiguous:
Yes
Permitted: No
Wet Space: No
Addition: No
Conversion: No

3128 Jodi Lane, Lake Shores Estates, Palm Harbor, Pinellas County, Florida, United States,

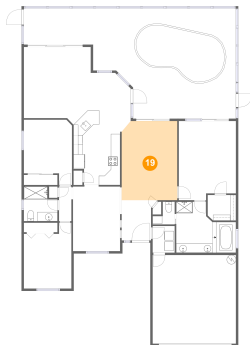
18 Floor 1 - Foyer



Dimensions: 6'5" x 8'9"
Area: 57 sq. ft
Counted as Living Area:
Yes

Heated: Yes
Finished: Yes
Enclosed: Yes
Contiguous:
Yes
Permitted: Yes
Wet Space: No
Addition: No
Conversion: No

19 Floor 1 - Living Room



Dimensions: 12'1" x 17'2"
Area: 205 sq. ft
Counted as Living Area:
Yes

Heated: Yes
Finished: Yes
Enclosed: Yes
Contiguous:
Yes
Permitted: Yes
Wet Space: No
Addition: No
Conversion: No